

H07-660 Industrial HRC fuse links



Product description

Eaton's Bussmann® series H07-660 fuse links are specifically designed for the protection of large industrial installations up to 690 V a.c.

Standard features

- Good peak let-through current limitation
- 1:1:6 Selective coordination ratio between "minor" and "major" fuse
- gG characteristics for cable protection and general purpose applications
- Power loss values well within the limits of IEC 60269-2

Catalogue symbol:

- H07-660(Amps)

Technical data:

- Rated voltage: 690 V a.c.
- Rated current: 2 to 32 A
- Breaking capacity: 80 kA a.c.
- Breaking range and utilisation category: gG

Standards/approvals:

- BS88-2
- IEC 60269-2
- Suitable for use in RoHS compliant applications

Fuse holders (sold separately):

- CM32F (Camaster)
- RS32H (Red Spot)

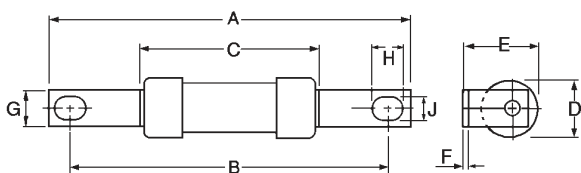
Packaging:

- MOQ 20

Table 1. Technical data

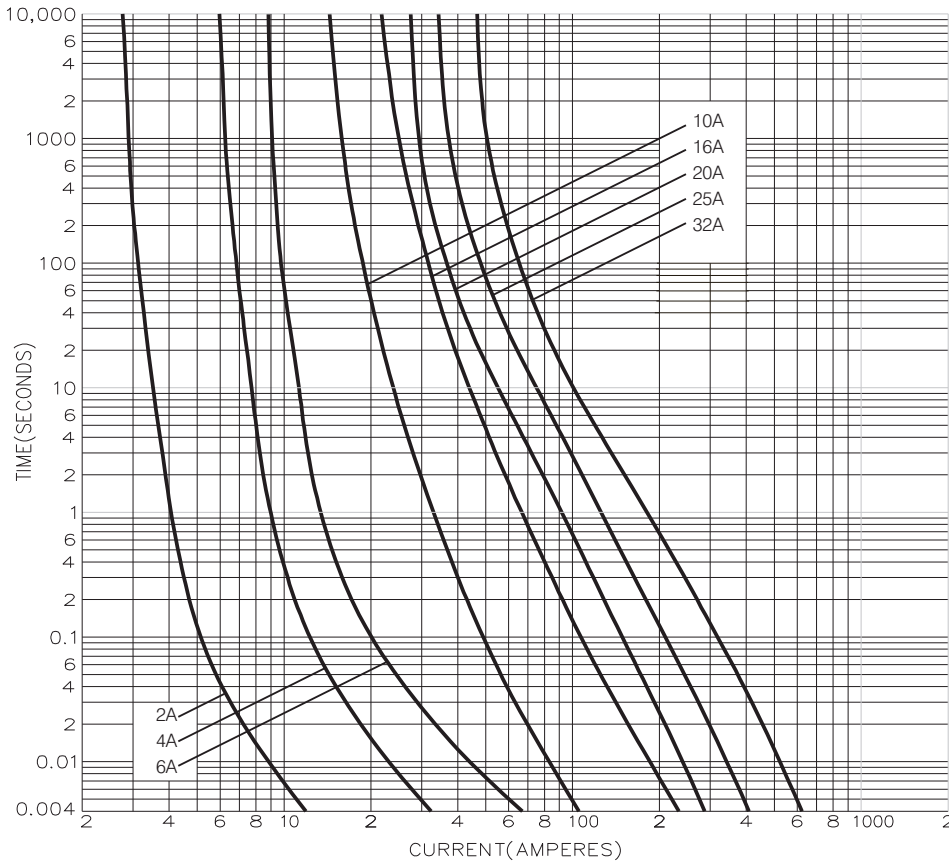
Part number	Rated voltage	Rated current (Amps)	Energy integrals I ² t (A ² S)			Watts loss		Product Class
			Pre-arcing	Total at 415V	Total at 550V	Total at 660V	W	
2H07-660	690 V a.c.	2	0.8	1.6	2.4	3.2	1.5	gG
4H07-660	690 V a.c.	4	5	10	15	20	2.7	gG
6H07-660	690 V a.c.	6	20	40	60	80	3.3	gG
10H07-660	690 V a.c.	10	44	130	180	220	2.8	gG
16H07-660	690 V a.c.	16	250	765	1000	1200	2.8	gG
20H07-660	690 V a.c.	20	430	900	1300	2500	2.7	gG
25H07-660	690 V a.c.	25	850	1800	2500	4900	3.1	gG
32H07-660	690 V a.c.	32	2100	4400	6100	12000	3.3	gG

Dimensions - mm



Catalogue numbers	A	B	C	D	E	F	G	H	J
2-32H07-660	82.3	73	52	22	22.4	11.5	8.7	7.7	5.4

Time current curve



Changes to the products, to the information contained in this document, and to prices are reserved; so are errors and omissions. Only order confirmations and technical documentation by Eaton is binding. Photos and pictures also do not warrant a specific layout or functionality. Their use in whatever form is subject to prior approval by Eaton. The same applies to Trademarks (especially Eaton, Moeller, and Cutler-Hammer). The Terms and Conditions of Eaton apply, as referenced on Eaton Internet pages and Eaton order confirmations.

Eaton
 EMEA Headquarters
 Route de la Longeraie 7
 1110 Morges, Switzerland

Eaton Electrical Products Limited
 Melton Road
 Burton-on-the-Wolds
 Leicestershire, LE12 5TH
 United Kingdom

© 2017 Eaton
 All Rights Reserved
 PDF Only
 Publication No. 4150
 October 2017

Eaton is a registered trademark.

All other trademarks are property of their respective owners.