

WIRE COMBINATIONS FOR NYLON-INSUALTED CLOSED END CONNECTORS

MOLEX P/N: 191600009 (NC-2212), 191600129 (NC-2212BULK)  
191600071 (NC-2212T), 191600109 (NC-2212BT)

UL LISTED & CSA CERTIFIED WIRE COMBINATIONS  
SOLID OR STRANDED, COPPER WIRE ONLY

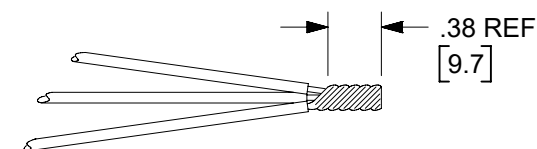
	14 AWG	16 AWG	18 AWG	20 AWG	22 AWG
(D1) ▽	1	1			
	1		1		
	1		2		
	1		1	1	
	1		1	2	
	1		1		1
	1		1		2
	1		1		3
	1			1	
	1			2	
	1			3	
	1				1
		3			
		2			
▽		2	1		
		2	2		
		2		1	
		2		2	
		2			1
		2			2
		2			3
		2	1	1	
		2	1		1
		2		1	1
		1		1	2
		1	1		
		1	2		
		1	3		
		1		1	
		1		2	
		1		3	
		1		4	
		1			
		1			1
		1			2
		1			3
		1			4
		1			5

	16 AWG	18 AWG	20 AWG	22 AWG
	1	2	1	
	1	2		1
	1	2		2
	1	1	1	1
	1	1	2	1
	1	1	1	2
▽**		5		
		4		
		4	1	
		4		1
		3		
		3	2	
		3		1
		3		2
		3		3
		3	1	1
		2		
		2	1	
		2	2	
		2	3	
		2		1
		2		2
		2		3
		2		4
		2		5
		2	1	1
		2	1	2
		2	1	3
		2	2	1
		2	3	1
		2	1	2
		2	1	3
		1	1	
		1	2	
		1	3	
		1	4	
		1	5	
		1		1
		1		2
		1		3
		1		4

	14 AWG	16 AWG	18 AWG	20 AWG	22 AWG
			1	1	2
			1	1	3
			1	1	4
			1	2	2
			1	2	3
			1	3	2
				6	
				5	
				5	1
				4	
				4	1
				4	2
				3	
				3	1
				3	2
				3	3
				2	
				2	1
				2	2
				2	3
				2	4
				1	1
				1	2
				1	3
				1	4
				1	5
					6
					5
					4
					3
*	1				2
*	1				3
*	1				4
*	1		1	1	1

WIRE PREPARATION

NOTE: PRE-TWISTING NOT REQD FOR OEM APPLICATIONS  
SOLID: (OEM ONLY)  
A. STRIP LEADS TO .38(9.5)  
B. INSERT INTO CONNECTOR & CRIMP  
STRANDED:  
A. STRIP LEADS TO APROX. .75(19.1)  
B. TWIST WIRE COMBINATION EVENLY & TIGHT.  
C. TRIM STRIPPED PRE-TWISTED ZONE TO .38(9.5).  
D. INSERT INTO CONNECTOR AND CRIMP.



RATING 105°C 600 VOLT  
(1000 VOLT IN SIGNS OR FIXTURES)  
FILE: E32244



RATING 105°C 600 VOLT  
(1000 VOLT IN SIGNS OR FIXTURES)  
FILE: LR 18689  
\* 125°C FOR PRE-TWISTED WIRE ONLY

APPLICATION WITH HANDTOOL:

HOLD TOOL WITH LOCATOR PLATE FACING UP.  
INSERT CLOSED END CONNECTOR IN HOLE.  
INSURE THAT SHOULDER OF CONNECTOR IS RESTING ON LOCATOR PLATE.  
CLOSE TOOL JAWS UNTIL CONNECTOR IS HELD SNUG IN PLACE.  
LOAD CONNECTOR WITH DESIRED WIRE COMBINATION.  
COMPLETE CRIMP BY CLOSING TOOL HANDLES UNTIL THEY RELEASE.

CRIMP TOOLING AVAILABLE

192280030 (ATP-301) AIR TAPE PRESS OR  
638853500 MINI-MAC TAPE APPLICATOR WITH  
192880239 (ATP-NC-2212) CRIMPING DIES

(D1)

640010900 (RHT-7050) HANDTOOL  
640050900 (AT-7050) CRIMP HEAD OR 640053600 (AT-2212) CRIMP HEAD  
FOR 192790001 (AT-200) AIR HAND TOOL

\* - CSA CERTIFIED ONLY

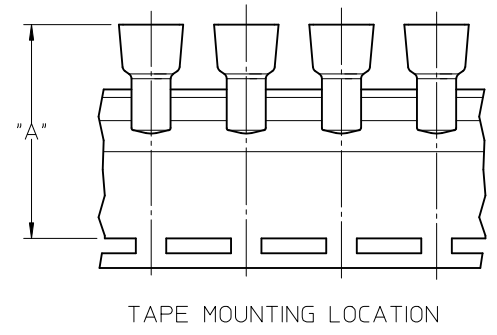
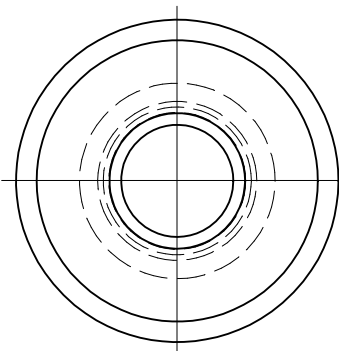
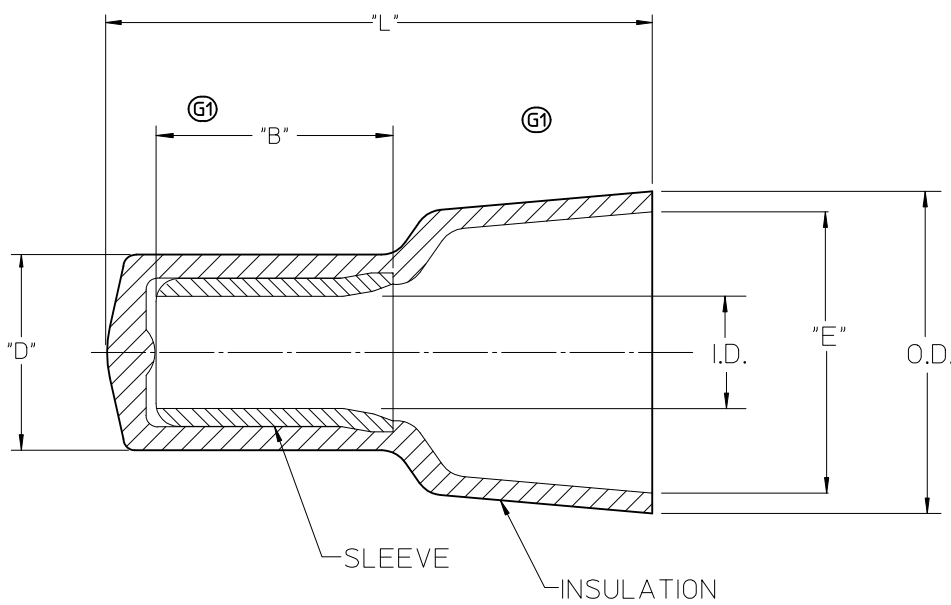
\*\* - UL LISTED ONLY

▽ - STRANDED WIRE ONLY

NOTE: THIS DOCUMENT USED TO MAKE STUFFER SHEET  
PART NO: 194080109  
DOC NO'S: E-19160-009 & PK-19408-109

FUNCTIONAL SYMBOLS FA = 0 FE = 0 FD = 0	THIS DRAWING CONTAINS INFORMATION THAT IS PROPRIETARY TO MOLEX ELECTRONIC TECHNOLOGIES, LLC AND SHOULD NOT BE USED WITHOUT WRITTEN PERMISSION																				
	DIMENSION UNITS INCH/MM	SCALE NTS			CURRENT REV DESC: WIRE COMBO: (1) 14 AWG + (1) 16 AWG "STRANDED" ONLY WAS "STRANDED OR SOLID". CRIMP TOOLING P/N'S UPDATED.																
	GENERAL TOLERANCES (UNLESS SPECIFIED)		CLOSED END CONNECTOR WIRE COMBINATNS NC-2212 PRODUCT SPECIFICATION																		
	<table border="1"> <thead> <tr> <th></th> <th>MM</th> <th>INCH</th> </tr> </thead> <tbody> <tr><td>4 PLACES</td><td>±</td><td>±</td></tr> <tr><td>3 PLACES</td><td>±</td><td>±</td></tr> <tr><td>2 PLACES</td><td>±</td><td>±</td></tr> <tr><td>1 PLACE</td><td>±</td><td>±</td></tr> <tr><td>0 PLACES</td><td>±</td><td>±</td></tr> </tbody> </table>			MM	INCH	4 PLACES	±	±	3 PLACES	±	±	2 PLACES	±	±	1 PLACE	±	±	0 PLACES	±	±	PRODUCT CUSTOMER DRAWING EC NO: 704038 DRWN: DMYRICK 2022/04/07 CHKD: JMACNEIL 2022/05/04 APPR: JMACNEIL 2022/05/04 INITIAL REVISION: DRWN: APPR:
	MM	INCH																			
4 PLACES	±	±																			
3 PLACES	±	±																			
2 PLACES	±	±																			
1 PLACE	±	±																			
0 PLACES	±	±																			
DIVISIONAL SYMBOLS	ANGULAR TOL ± °	THIRD ANGLE PROJECTION	DRAWING B-SIZE	SERIES 19160	MATERIAL NUMBER 191600009	CUSTOMER GENERAL MARKET	DOCUMENT NUMBER PS-19160-006	DOC TYPE PSD	DOC PART 001	REVISION D1											
DOCUMENT STATUS P1	RELEASE DATE 2022/05/04	14:37:30	DRAFT WHERE APPLICABLE MUST REMAIN WITHIN DIMENSIONS	SHEET NUMBER 1 OF 1																	

LOOSE PIECE		TAPE MOUNTED		"L" MAX.	"B" MIN (G1)	"D" MAX.	"E" MIN.	I.D. MIN.	O.D. MAX.	"A" DIM ±.02/0.5 (G1)
MATERIAL NO.	ENG. NO.	MATERIAL NO.	ENG. NO.							
191600012	NC-2214	191600070	NC-2214T	.62/15.7	.30/7.6	.19/4.8	.24/6.1	.09/2.3	.32/8.1	1.54/39.2
191600009	NC-2212	191600071	NC-2212T	.76/19.3	.30/7.6	.23/5.8	.27/6.9	.10/2.5	.36/9.1	1.63/41.4
191600002	NC-1610	191600083	NC-1610T	.90/22.8	.28/7.1	.28/7.1	.38/9.6	.15/3.8	.45/11.4	1.75/44.5
191600024	NC-8	191600028	NC-8T	1.10/27.9	.42/10.6	.36/9.1	.48/12.2	.21/5.3	.57/14.5	1.86/47.4



NOTES:

- MATERIAL: SLEEVE: TIN-PLATED COPPER  
INSULATION: 6/6 NYLON,  
NATURAL TRANSLUCENT
- PARTS ARE ROHS COMPLIANT.

SALES DRAWING

<b>CORRECT TOLERANCES</b> EC NO: WNA2010-0673 DRAWN BY: DRW/ETHRODAHL 2010/05/07 CHK'D R: DEROSS 04/02/23 APPR: JMACEIL 2010/06/23	QUALITY SYMBOLS ▽=0 ▽=0	GENERAL TOLERANCES (UNLESS SPECIFIED)		DIMENSION STYLE		SCALE	DESIGN UNITS	THIRD ANGLE PROJECTION			
				IN/MM		5:1	INCH				
				DRAWN BY DATE		CHECKED BY DATE		CLOSED END CONNECTORS NYLON INSULATED <b>molex</b> MOLEX INCORPORATED			
				H. BEITZE 04/02/23		R. DEROSS 04/02/23					
		APPROVED BY DATE		MATERIAL NO.		DOCUMENT NO.		SHEET NO.			
		R. DEROSS 04/02/23		SEE CHART		SD-19160-001		1 OF 1			
		DRAFT WHERE APPLICABLE MUST REMAIN WITHIN DIMENSIONS		SIZE B		THIS DRAWING CONTAINS INFORMATION THAT IS PROPRIETARY TO MOLEX INCORPORATED AND SHOULD NOT BE USED WITHOUT WRITTEN PERMISSION					