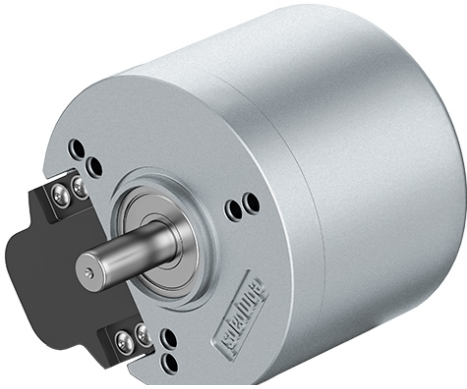


VDC-3-49.15-B00-K4 -



Characteristics of the drive solution

Typ	Unit	Value
Order number	-	VM.VDC4915BK4
Weight	kg	0.59
Length	mm	52
Ambient temperature	-	0°C to +40°C
Protection	-	IP 54

Motor

Typ	Unit	Value
Type of motor	-	brushless EC motor, external rotor (integr. electr.)
Motor designation	-	VDC-3-49.15-B00-K4
Voltage	V	24
Output speed	rpm	4000
Nominal power	W	100.0
Rated current	A	5.2
Torque	Ncm	23.9
weight of Motor	kg	0.59