

4

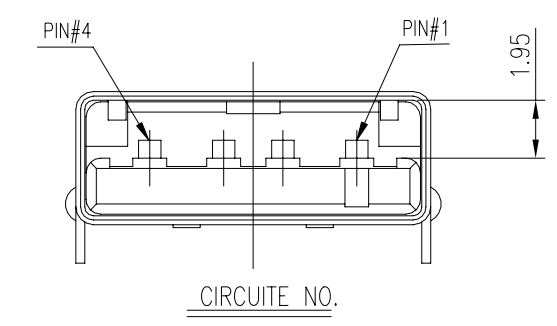
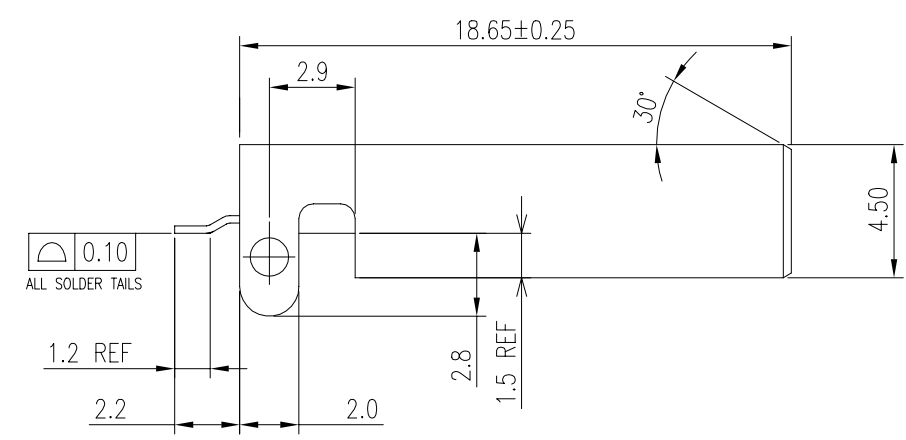
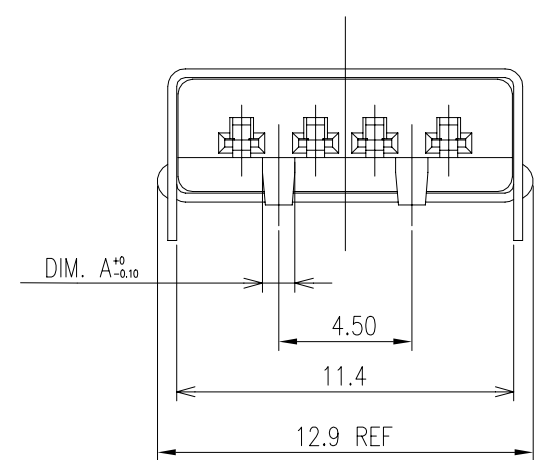
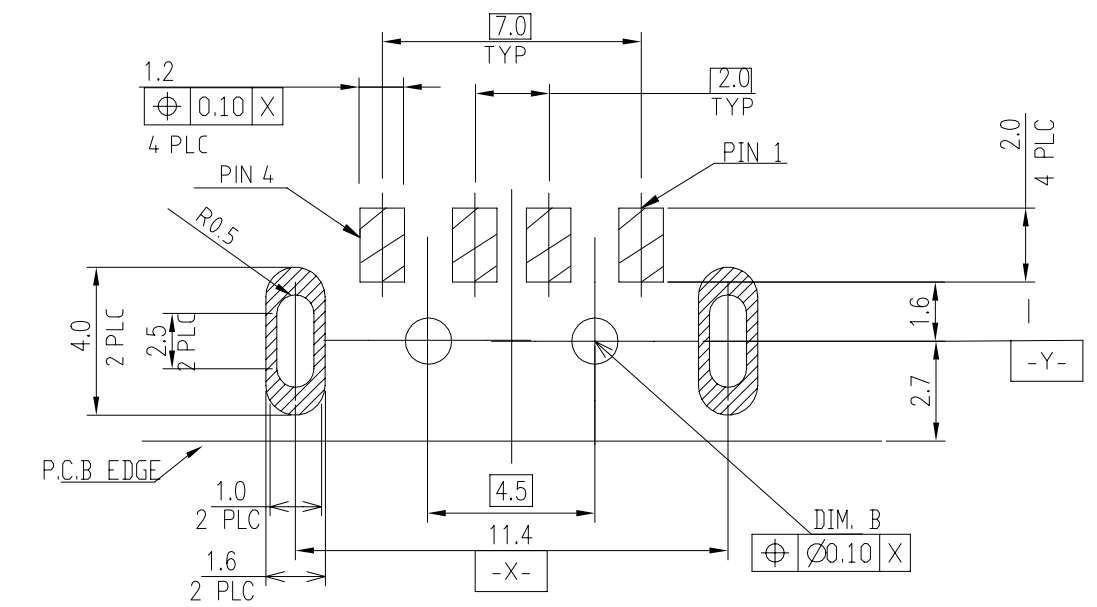
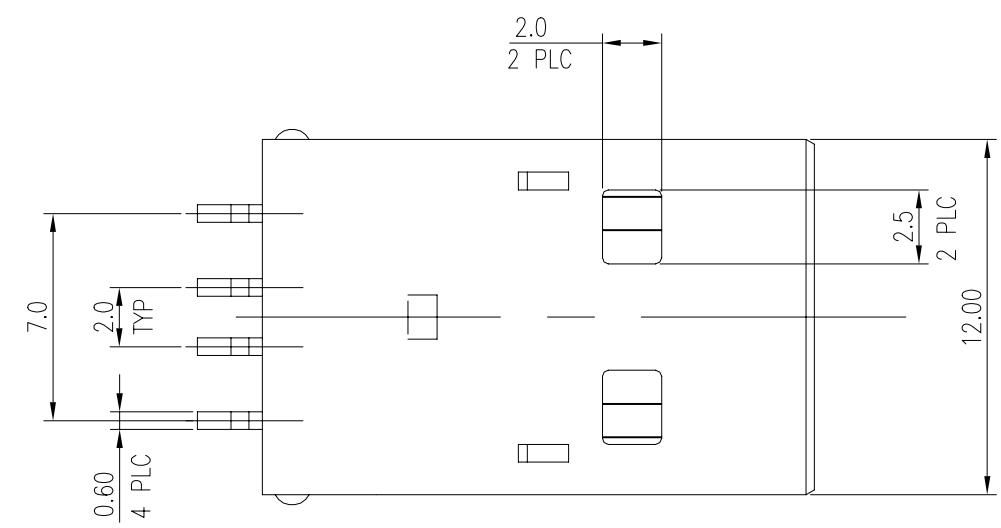
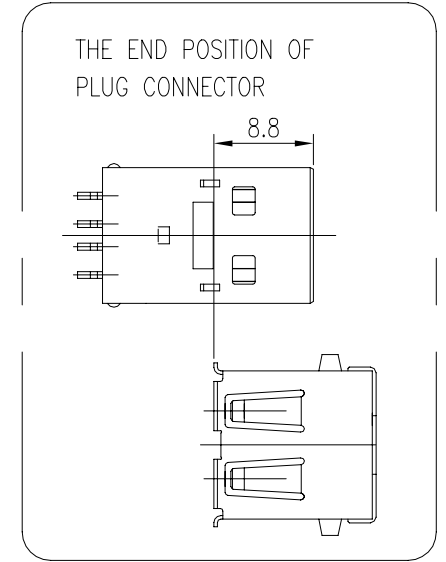
3

2

1

THIS DRAWING IS UNPUBLISHED. RELEASED FOR PUBLICATION
 © COPYRIGHT 2010 BY TYCO ELECTRONICS CORPORATION. ALL RIGHTS RESERVED.

| LOC | DIST | REVISIONS | | | |
|-----|------|-------------|---------------------------|-----------|-------|
| P | LTR | DESCRIPTION | DATE | DWN | APVD |
| DW | | E | REVISED PER ECN-22-168605 | 17AUG2022 | AK SZ |



- NOTES:
- MATERIAL:
 HOUSING: PA-6T WITH 30%GF, UL 94V-0 COLOR: NATURAL/BLACK.
 OR
 HPPA WITH 30%GF, UL 94V-0 COLOR: WHITE.
 CONTACT: BRASS.
 SHELL: COLD ROLL STEEL, (SPCC-1).
 - FINISH:
 CONTACTS: GOLD FLASH OVER
 0.76um [30u"] MIN. PALLADIUM-NICKEL PLATING ON CONTACT AREA,
 2.54um [100u"] MIN. MATTE-TIN ON SOLDER TAILS
 1.27um [50u"] MIN. NICKEL UNDERPLATING ALL OVER.
 SHELL: 3.048um [120u"] MIN. NICKEL PLATED OVER
 5.08um (200u") MIN. CU UNDERPLATED ALL OVER.
 - REFLOW SOLDER CAPABLE TO 260°C PER TE TEST SPEC.
 109-201, CONDITION B.

| OBSELETE | REEL | Ø1.40 | Ø1.50 | BLACK | 1-1734028-4 |
|----------|---------|-------|------------|------------|-------------|
| | | Ø1.00 | Ø1.10 | SEE NOTE 1 | 1-1734028-3 |
| OBSELETE | | Ø1.40 | Ø1.50 | NATURE | 1-1734028-2 |
| | | Ø1.00 | Ø1.10 | SEE NOTE 1 | 1-1734028-1 |
| | TRAY | Ø1.40 | Ø1.50 | BLACK | 1734028-4 |
| | | Ø1.00 | Ø1.10 | BLACK | 1734028-3 |
| OBSELETE | | Ø1.40 | Ø1.50 | NATURE | 1734028-2 |
| | | Ø1.00 | Ø1.10 | SEE NOTE 1 | 1734028-1 |
| | PACKING | DIM.A | DIM.B(PCB) | HSG. COLOR | PART NUMBER |

| | | | | | | |
|--|--|------------------|-----------|-----------|---------------------|---|
| THIS DRAWING IS A CONTROLLED DOCUMENT. | | DWN | F. YANG | 10JAN2010 | TE Connectivity | NAME UBS CONNECTOR, PLUG, R/A, SMT TYPE |
| DIMENSIONS: mm | | CHK | S. CHIEN | 10JAN2010 | | |
| TOLERANCES UNLESS OTHERWISE SPECIFIED: | | APVD | W. KODAMA | 10JAN2010 | | |
| 0 PLC ± 0.40 1 PLC ± 0.30 2 PLC ± 0.20 3 PLC ± 0.10 4 PLC ± - ANGLES ± 3.0° | | PRODUCT SPEC | 108-57306 | | | |
| MATERIAL | | APPLICATION SPEC | 501-57337 | | SIZE | A3 |
| SEE NOTE | | WEIGHT | -- | | CAGE CODE | 00779 |
| | | CUSTOMER DRAWING | | | DRAWING NO | 1734028 |
| | | | | | RESTRICTED TO | |
| | | | | | SCALE | 1 OF 3 |
| | | | | | SHEET | REV E |

4

3

2

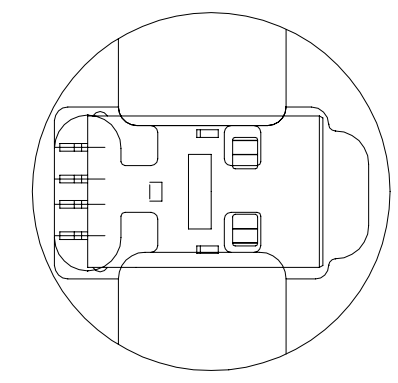
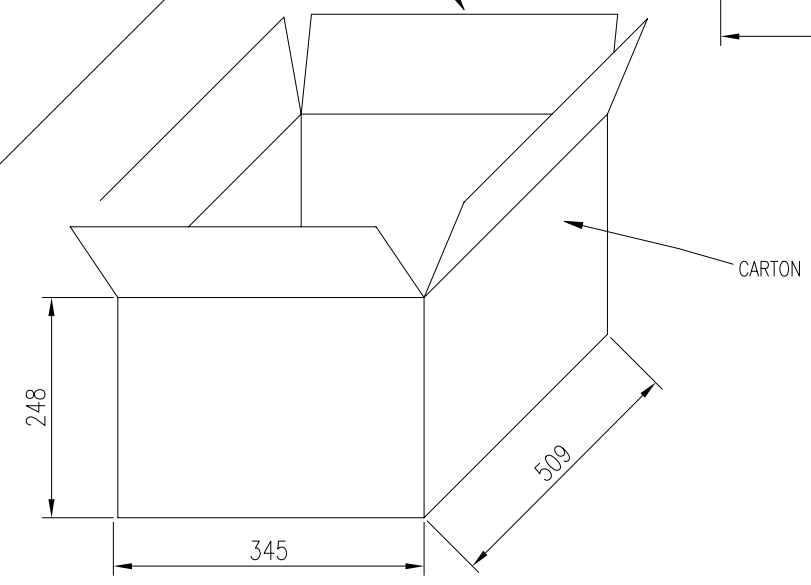
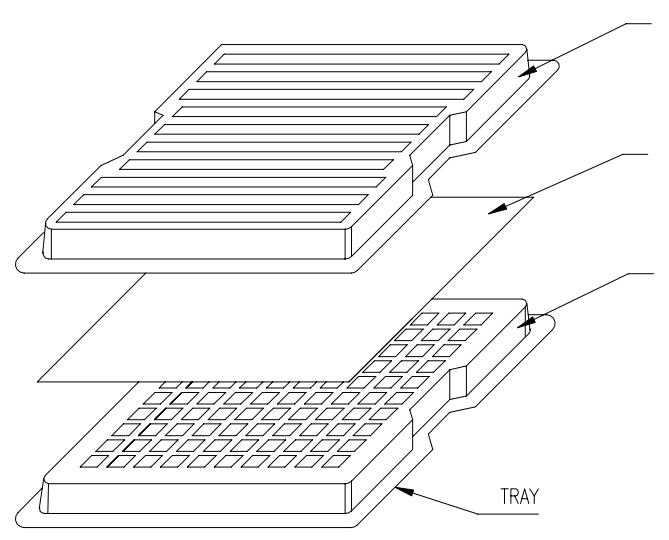
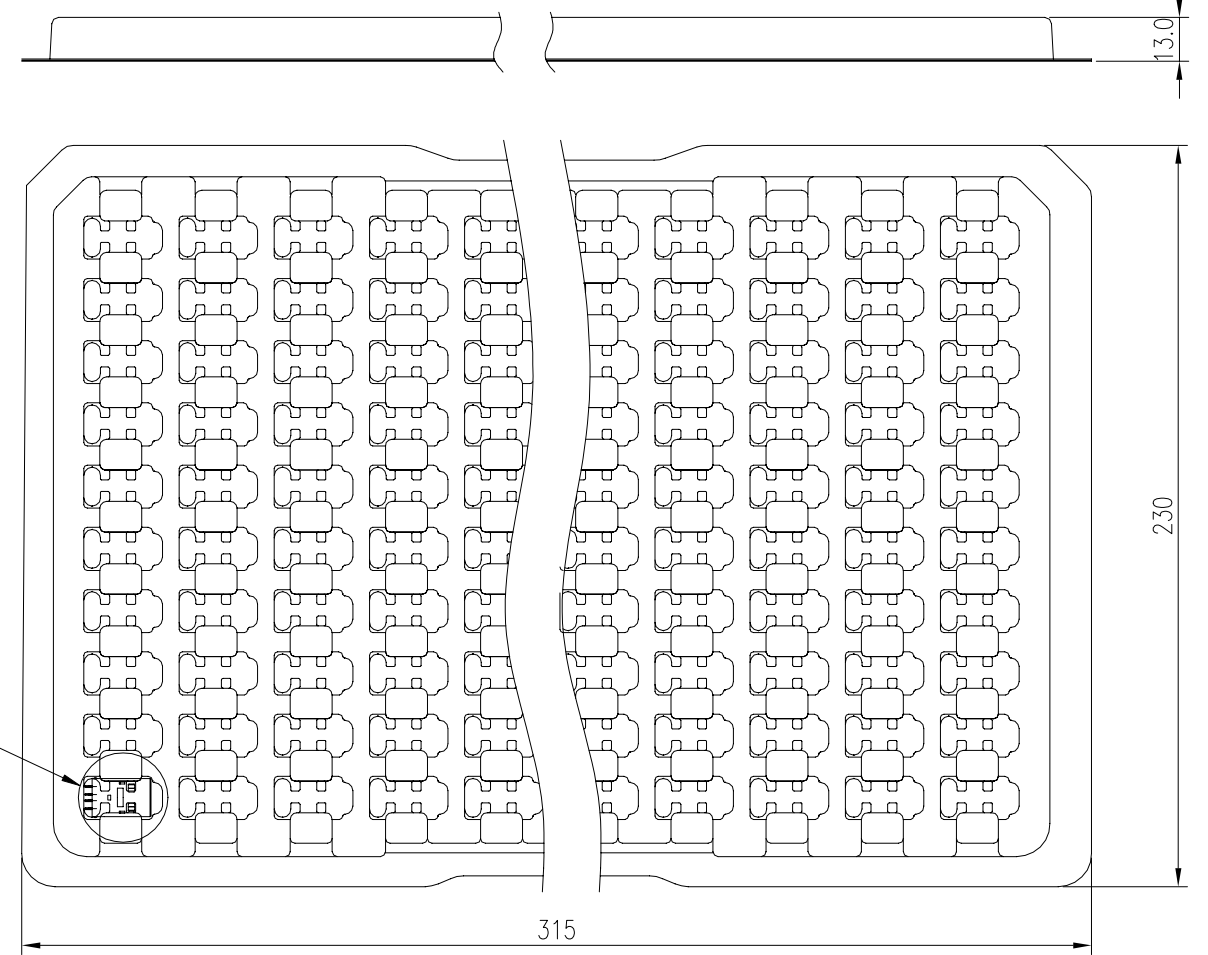
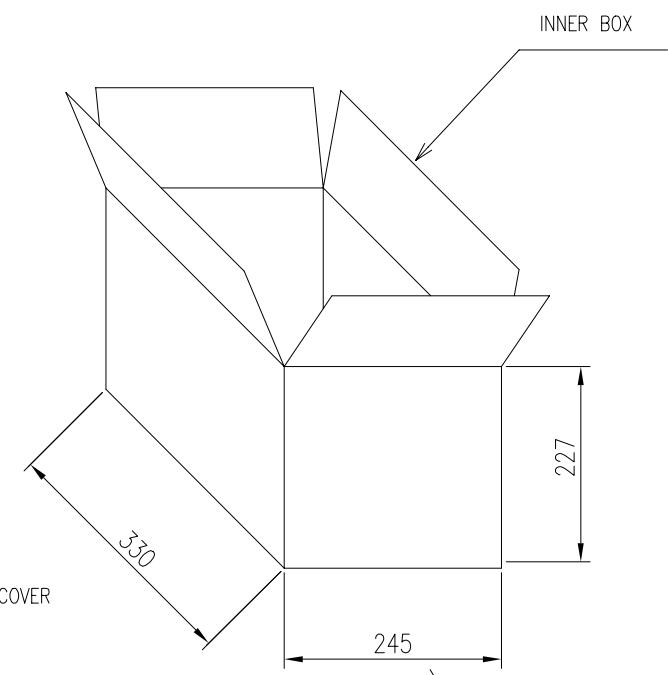
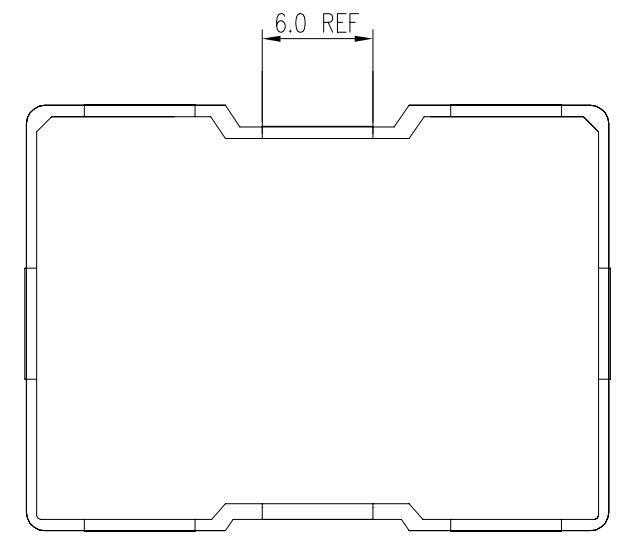
1

THIS DRAWING IS UNPUBLISHED. RELEASED FOR PUBLICATION
 © COPYRIGHT 2010 BY TYCO ELECTRONICS CORPORATION. ALL RIGHTS RESERVED.

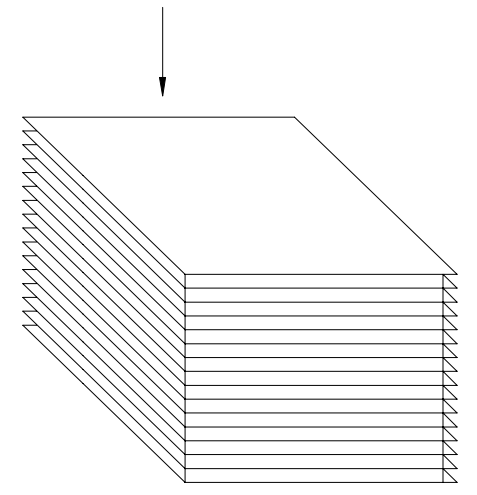
| LOC | DIST | REVISIONS | | | | | |
|-----|------|-----------|-----|--------------|------|-----|------|
| DW | | P | LTR | DESCRIPTION | DATE | DWN | APVD |
| | | | | SEE SHEET 1. | | | |

D
C
B
A

D
C
B
A



| | | | | |
|--------------|------------|----------|------------|----------|
| 16.5KG | 15.5KG | 100 | 32 | 3200PCS |
| GROSS WEIGHT | NET WEIGHT | PCS/TARY | PCS/CARTON | QUANTITY |



| | | | | | |
|--|--|------------------|------------------------------------|-----------|------------|
| THIS DRAWING IS A CONTROLLED DOCUMENT. | | DWN | TE Connectivity | | |
| DIMENSIONS: mm | | CHK | NAME | | |
| TOLERANCES UNLESS OTHERWISE SPECIFIED: | | APVD | UBS CONNECTOR, PLUG, R/A, SMT TYPE | | |
| 0 PLC ± - | | PRODUCT SPEC | SIZE | CAGE CODE | DRAWING NO |
| 1 PLC ± 0.3 | | APPLICATION SPEC | A3 | 00779 | 1734028 |
| 2 PLC ± 0.2 | | WEIGHT | RESTRICTED TO | | |
| 3 PLC ± 0.15 | | CUSTOMER DRAWING | SCALE | | |
| 4 PLC ± - | | | SHEET 2 OF 3 | | |
| ANGLES ± 3' | | | REV E | | |
| MATERIAL | | | | | |
| FINISH | | | | | |

4

3

2

1

THIS DRAWING IS UNPUBLISHED.

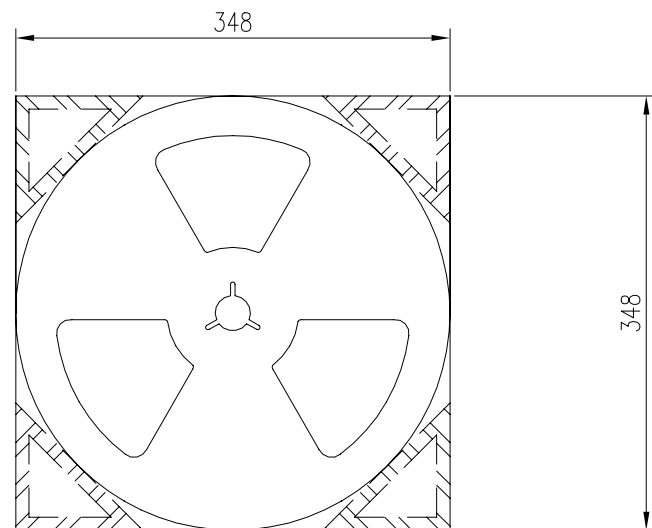
RELEASED FOR PUBLICATION

© COPYRIGHT 2010 BY TYCO ELECTRONICS CORPORATION. ALL RIGHTS RESERVED.

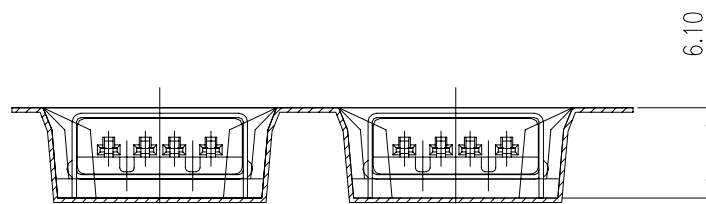
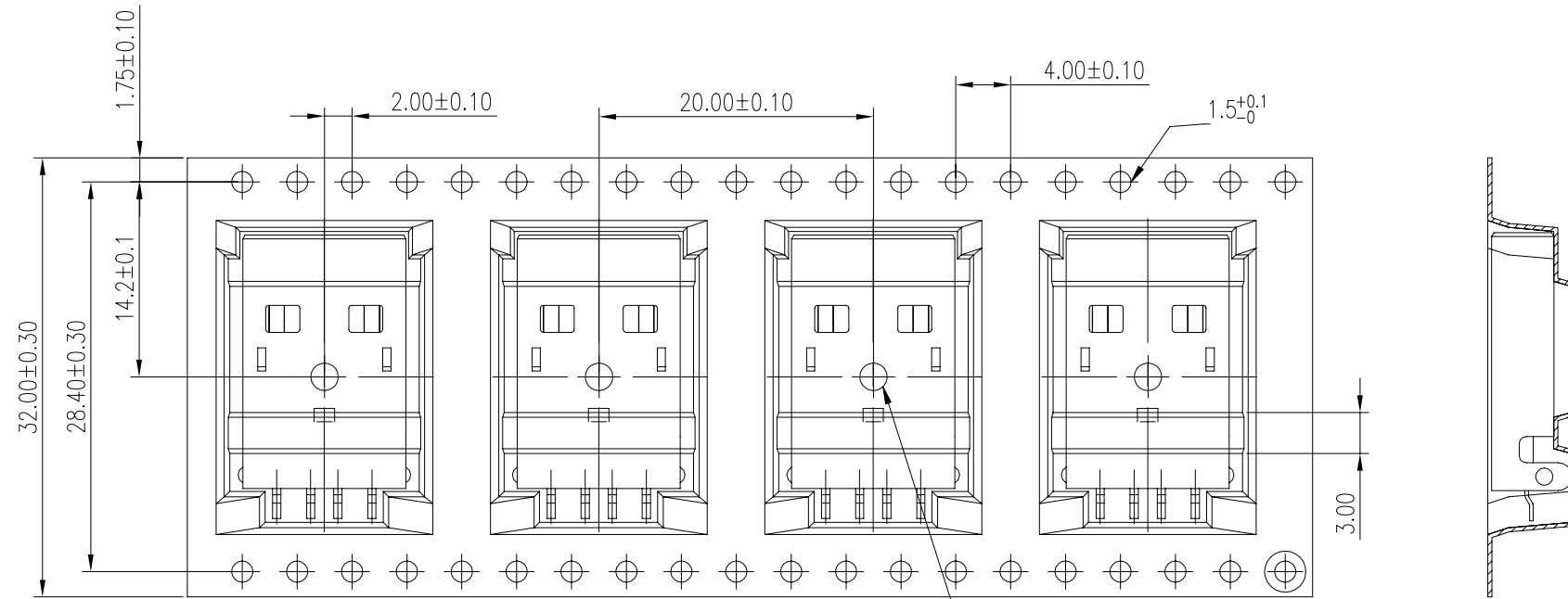
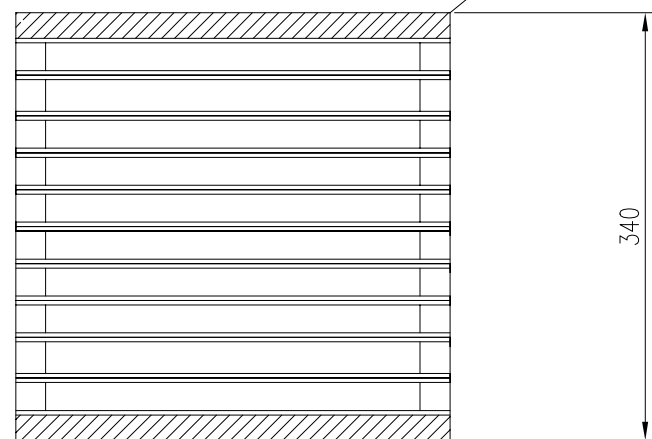
LOC DW DIST

REVISIONS

| P | LTR | DESCRIPTION | DATE | DWN | APVD |
|---|-----|-------------|------|-----|------|
| | | SEE SHEET 1 | | | |

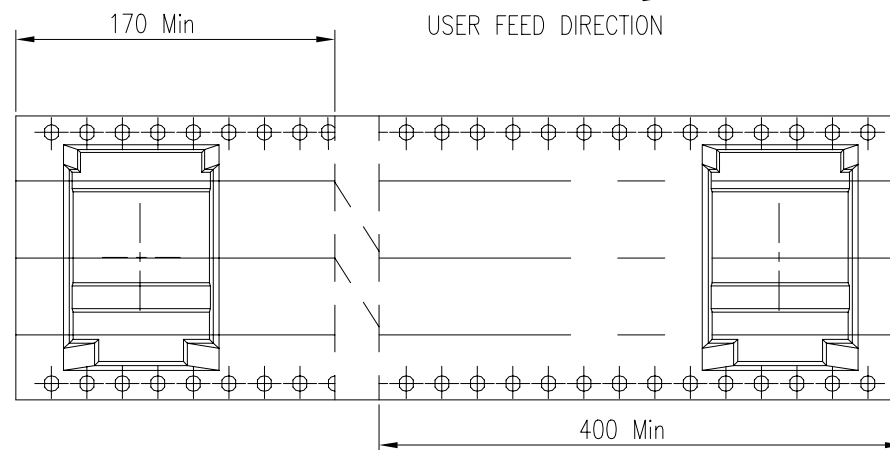
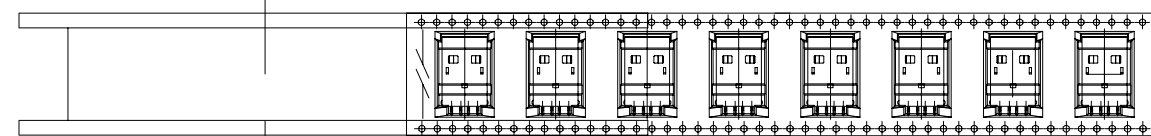


6 SEE NO 2.

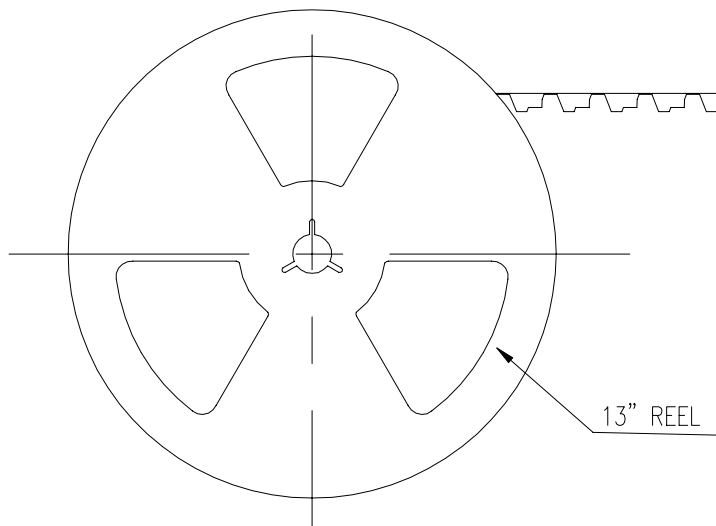


NOTE:

- PACKAGING MATERIAL IN PLASTIC, RUBBER, INK, PIGMENT AND PAINT MUST MEET CONTROLLED SUBSTANCES SPEC :TEC-138-702..
 - * CADMIUM AND CADMIUM COMPOUNDS NOT TO EXCEED: 5 PPM.
 - * LEAD, CADMIUM, CHROM VI AND MERCURY NOT TO EXCEED: 100 PPM (COMBINED).
- CARRIER TAPES, COVER TAPES, REELS AND TAPED COMPONENTS MUST MEET THE REQUIREMENTS DEFINED PER EIA-481-B.
- PACKAGE:500 PCS/REEL,8 REEL/BOX(W.G:13.5Kg,N.G:12.5Kg)
- AFTER UNREELING DIRECTION MUST HAVE 14PCS BLANK.(400mm Min.)
- BEFORE UNREELING DIRECTION MUST HAVE 6PCS BLANK.(170mm Min.)



| GROSS WEIGHT | NET WEIGHT | PCS/TAPE | PCS/CARTON | QUANTITY |
|--------------|------------|----------|------------|----------|
| 13.5KG | 12.5KG | 500 | 8 | 4000PCS |



| | | | | |
|--|--|--------------------------|-----------------------------------|-----------------|
| THIS DRAWING IS A CONTROLLED DOCUMENT. | | DWN F. YANG 10JAN2010 | | |
| | | CHK S. CHIEN 10JAN2010 | | |
| | | APVD W. KODAMA 10JAN2010 | NAME | |
| DIMENSIONS: mm | | PRODUCT SPEC | UBS CONNECTOR,PLUG, R/A, SMT TYPE | |
| TOLERANCES UNLESS OTHERWISE SPECIFIED: 0 PLC ± 0.40 1 PLC ± 0.30 2 PLC ± 0.20 3 PLC ± 0.10 4 PLC ± - ANGLES ± 3.0° | | APPLICATION SPEC | | |
| MATERIAL SEE NOTE | | FINISH SEE NOTE | SIZE A3 | CAGE CODE 00779 |
| | | WEIGHT -- | DRAWING NO C=1734028 | RESTRICTED TO |
| | | CUSTOMER DRAWING | SCALE | SHEET 3 of 3 |
| | | | | REV E |