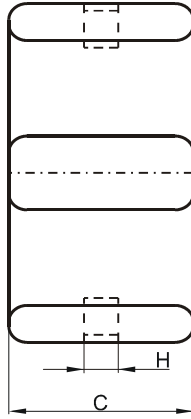
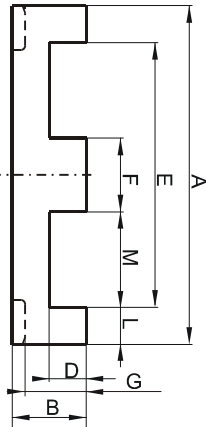


Specification for:

## CR42216EC

110 Delta Drive  
Pittsburgh, PA 15238  
Phone: 412/696-1333  
Fax: 412/696-0333  
Email: magnetics@spang.com

### DIMENSIONS



(mm)	Nominal:	Tol. min.:	Tol. max.:
<b>A</b>	21.8	-0.4	+ 0.4
<b>B</b>	5.7	-0.1	+ 0.1
<b>C</b>	15.8	-0.3	+ 0.3
<b>D</b>	3.2	-0.1	+ 0.1
<b>E</b>	16.8	-0.4	+ 0.4
<b>F</b>	5.0	-0.1	+ 0.1
<b>G</b>	4.68	-0.15	+ 0.15
<b>H</b>	2.8	0.0	+ 0.2
<b>L</b>	2.5 Ref.		
<b>M</b>	5.9 Ref.		
Eff. Parameters			
<b>Ae mm<sup>2</sup></b>	<b>Amin mm<sup>2</sup></b>	<b>le mm</b>	<b>Ve mm<sup>3</sup></b>
76.0	73.1	32.3	2451

### INDUCTANCE

AL value (nH)	Test conditions
Nom: 5066 Min.: 3800	10 kHz, < 0.5 mT, 25 °C

### MARKING

R EC
---------

### CORE LOSSES

P <sub>i</sub> max	Test conditions
90 mW/cm <sup>3</sup> (0.22 W/set)	100 kHz, 100 mT, 100 °C
518 mW/cm <sup>3</sup> (1.27 W/set)	100 kHz, 200 mT, 100 °C

### NOTE

Spec. modifications	Previous	Revised
2005-06-22	A=21.6±0.26 C=15.6 Min. L=2.54±0.31 M=5.72±0.31 Losses: General R material	A=21.8±0.4 C=15.5 Min. L=2.5 Ref. M=5.9 Ref. Losses: Detail as indicated