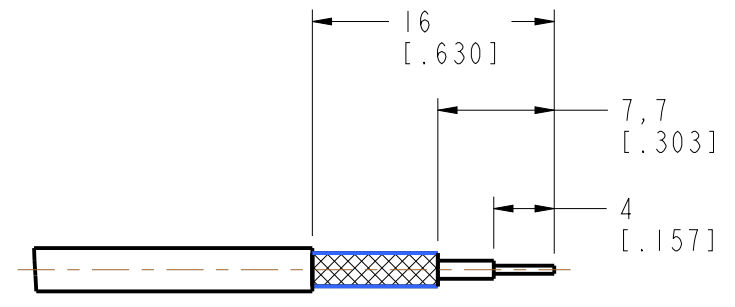


NOTES : (FINISH THICKNESS IN MICRO-INCHES)

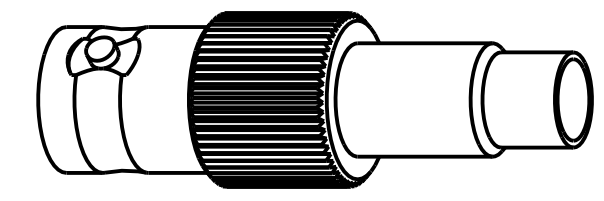
1. MATERIAL
 BODY: BRASS, NICKEL PLATING
 CONTACT: PHOSPHOR BRONZE GOLD PLATING
 INSULATOR: PTFE
2. ELECTRIC
 A. IMPEDANCE: 75Ω
 B. FREQUENCY RANGE: DC 0-2GHZ
 C. VSWR (RETURN LOSS) 1.22MAX. (DC-400MHZ)
 D. DIELECTRIC WITHSTANDING VOLTAGE: 1500 VRMS, MIN
3. MECHANICAL
 A. DURABILITT: 500 CYCLE MIN.
 B. TEMPERRATURE RANGE -65-+165°C
4. CRIMP FERRULE
 HEX CRIMP SIZE .255"
5. CRIMP CONTACT PIN
 HEX CRIMP SIZE .068"

THIRD ANGLE PROJ.

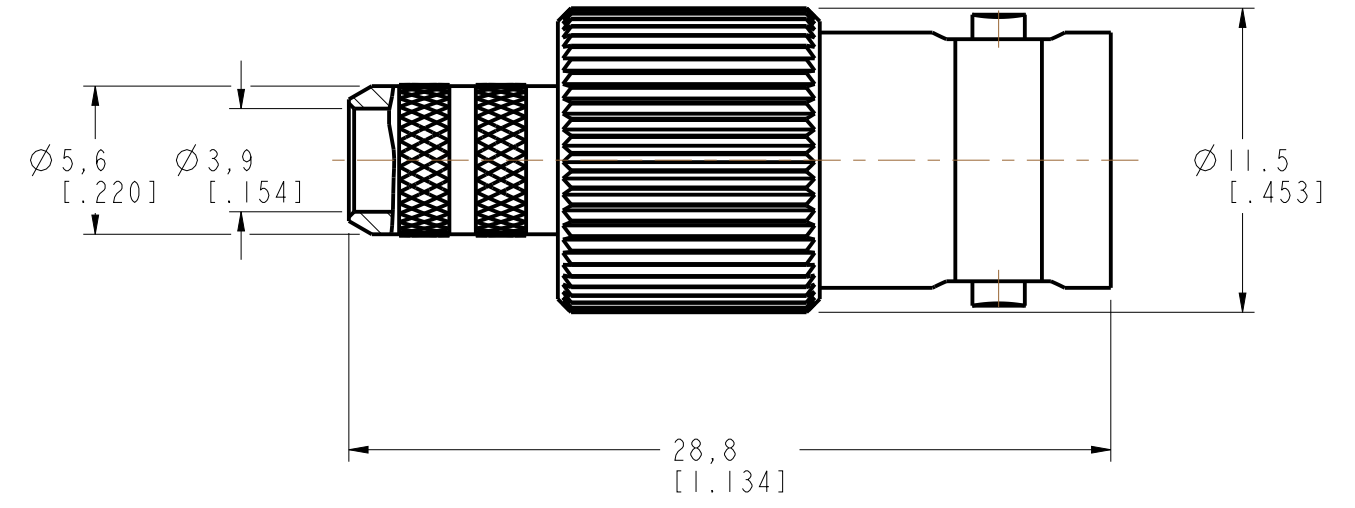
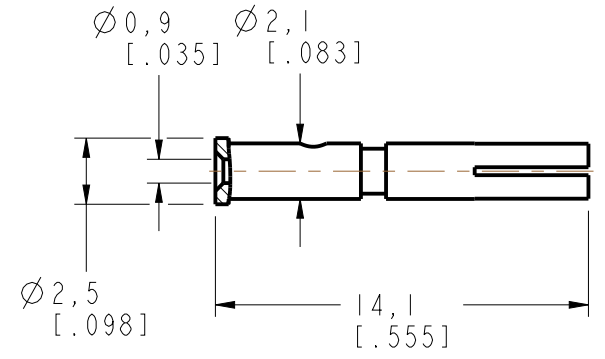
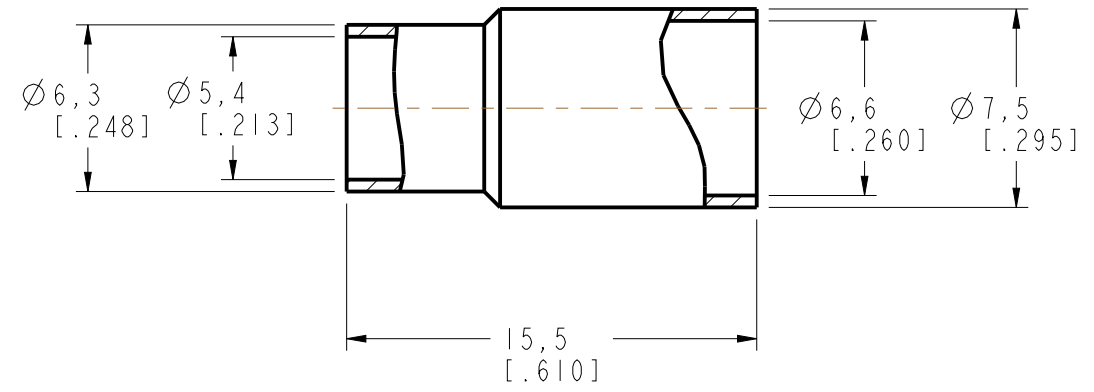
REVISIONS				
REV	DESCRIPTION	DATE	ECO	APPR
NC	RELEASE TO MFG	5/30/00	XXXXXX	
A	UPDATE DWG FORMAT	3/18/05	XXXXXX	
B	CORRECT FERRULE MATERIAL, UPDATE DWG FORMAT	5/16/13	2474	
C	SYNCH DWGS, GLOBAL FORMAT	8/7/14	2776	S.H



RECOMMENDED
CABLE STRIPPING DIM'S



SCALE 2.000



CUSTOMER OUTLINE DRAWING
ALL OTHER SHEETS ARE FOR INTERNAL USE ONLY

UNLESS OTHERWISE SPECIFIED, DIMENSIONS ARE IN METRIC AND TOLERANCES ARE: <0.5mm ±0.05mm 0.5 - 6mm ±0.1mm 6 - 30mm ±0.2mm 30 - 120mm ±0.3mm ANGLES ±1° NOTICE - These drawings, specifications, or other data (1) are, and remain the property of Amphenol corp. (2) must be returned upon request; and (3) are confidential and not to be disclosed to any person other than those to whom they are given by Amphenol Corp. the furnishing of these drawings, specifications, or other data by Amphenol Corp., or to any other person to anyone for any purpose is not to be regarded by implication or otherwise in any manner licensing, granting rights to permitting such holder or any other person to manufacture, use or sell any product, process or design, patented or otherwise, that may in any way be related to or disclosed by said drawings, specifications, or other data.	MATERIAL -	DRAWN JONA	DATE 07-Aug-14	TITLE BNC CRIMP JACK (FOR RG-59/U PLENUM ENTER CONTACT-20AWG CABLE)	Amphenol Connex
	REFERENCE AND B6121C1-NT3G-59T/20AWG-75	ENGINEER S.LI	DATE 05-Oct-13		
	CONFIGURATION LEVEL: In Work	APPROVED S.HSIEH	DATE 07-Aug-14	SCALE: 3.5:1.0 SHEET 3 OF 3	ITEM NO.
	FINISH	CAD FILE	DWG SIZE B	REV C	PART NO. 112645