

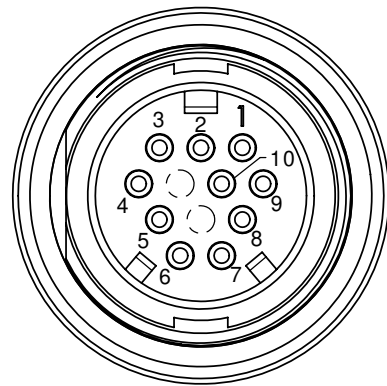
CUSTOMER PRINT

PART NUMBER: W4282-1XPG-300

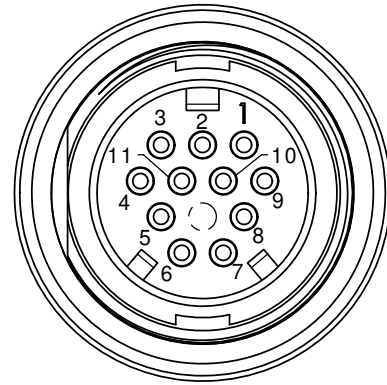
ASS'Y P/N	CONTACTS	HOLE POS. CLOSED
W4282-10PG-300	10 - # 20	11, 12
W4282-11PG-300	11 - # 20	12
W4282-12PG-300	12 - # 20	NONE
W4282-1XPG-300		

NO. OF CONTACTS

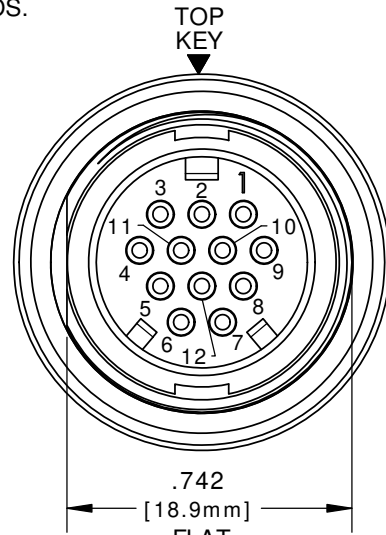
- NOTES:
 1. ALL PARTS TO BE BULK PACKED.
 2. CONTACTS ASSEMBLED INTO CONNECTOR. SOLDER CUPS FACING TOP KEY.
 3. ALL DIMENSIONS ARE REFERENCE ONLY EXCEPT WHERE NOTED WITH A TOLERANCE. DIMENSIONS IN BRACKETS [] ARE METRIC.



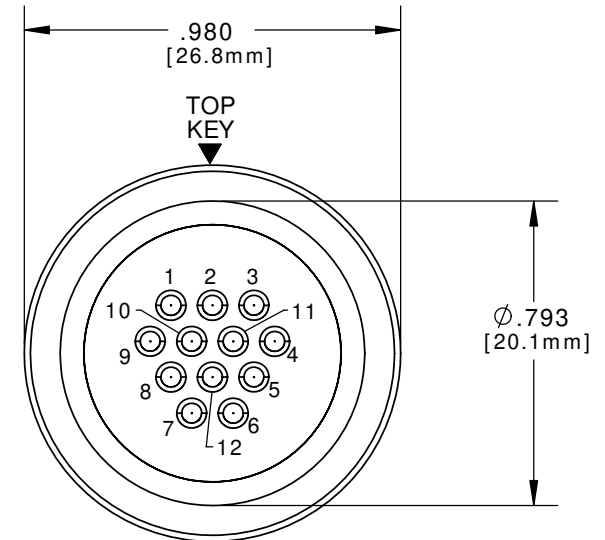
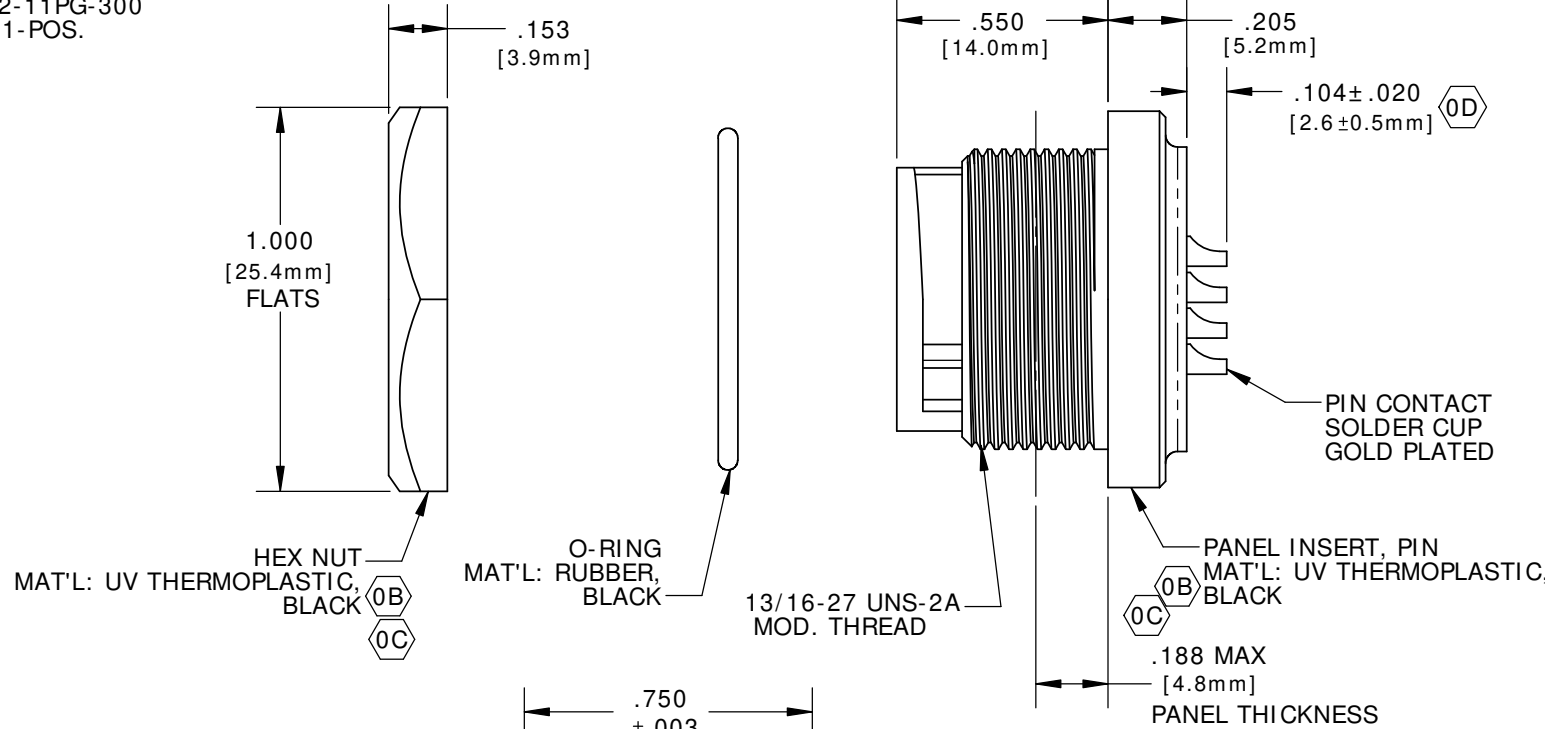
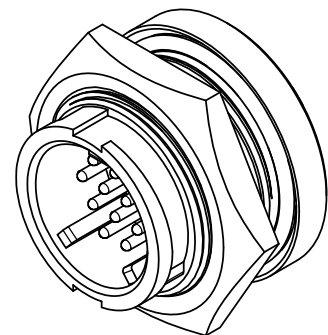
FACE VIEW
W4282-10PG-300
10-POS.



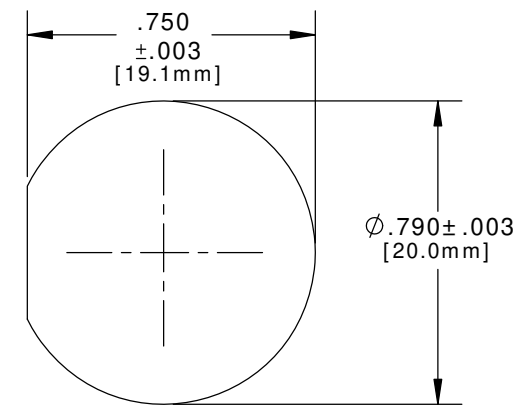
FACE VIEW
W4282-11PG-300
11-POS.



FACE VIEW
W4282-12PG-300
12-POS.



WIRE VIEW
 W4282-10PG-300 - 10-POS. (11&12 CLOSED)
 W4282-11PG-300 - 11-POS. (12 CLOSED)
 W4282-12PG-300 - 12-POS. (ALL OPEN)



RECOMMENDED
 PANEL CUTOUT
 STANDARD MULTI-CON-X

CUSTOMER APPROVAL

THIS DOCUMENT CONTAINS CONFIDENTIAL INFORMATION PROPRIETARY TO CONXALL CORPORATION. ANY REPRODUCTION, DISCLOSURE, OR USE OF THIS DOCUMENT / INFORMATION IS EXPRESSLY PROHIBITED UNLESS AUTHORIZED IN WRITING BY CONXALL CORPORATION.

APPROVED BY: _____
 DATE: _____

PRELIMINARY

REV.	INIT.	DATE	DESCRIPTION
0D	PAK	02/27/17	MODIFIED CONTACT TOLERANCE
0C	PAK	10/07/16	CHANGED MATERIAL FROM CHARCOAL BLACK TO BLACK
0B	PAK	02/18/15	CHANGED MATERIAL FROM BLACK TO CHARCOAL BLACK
0A	PAK	10/13/14	DRAWING CREATED PER DOR 10-2523JS-1

ALL INFORMATION ILLUSTRATED IS THE PROPERTY OF CONXALL CORPORATION. UNAUTHORIZED DUPLICATION OR DISTRIBUTION OF THIS DOCUMENT IS PROHIBITED.		ORIG. DRAWN BY: PAK DATE: 10/07/14 CHECKED BY:	601 E. WILDWOOD VILLA PARK, IL 60181
ALL UNITS ARE IN FEET, INCHES, FRACTION OF INCHES AND DECIMALS. UNLESS OTHERWISE SPECIFIED TOLERANCES: 3 PLACE DECIMALS ± .005 ANGLES ± 1° FRACTIONS ± 1/16		APPROVED BY: SCALE: NTS SIZE: B SHEET: 1 OF 1 FILE: W4282-1XPG-300 DIRECTORY: SLW	
- CRITICAL CHARACTERISTIC FLAG PER SPEC. XXXX			PART NUMBER: W4282-1XPG-300 REV. 0D