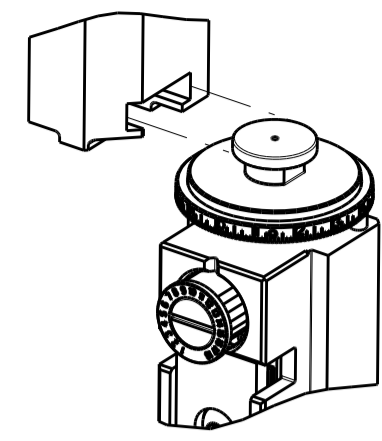


| PART NUMBER | REVISION | DESCRIPTION                      | FEED TYPE  |
|-------------|----------|----------------------------------|------------|
| 2836085-1   | D        | FINE CRIMP HEIGHT ADJUST         | MECHANICAL |
| 2836085-2   | D        | FINE CRIMP HEIGHT ADJUST         | PNEUMATIC  |
| 7-2836085-1 | D        | MECHANICAL AND CRIMP TOOLING KIT | MECHANICAL |
| 7-2836085-2 | D        | PNEUMATIC AND CRIMP TOOLING KIT  | PNEUMATIC  |
| 7-2836085-7 | C        | CRIMP TOOLING KIT                | -          |

ATLANTIC VERSION TERMINATOR INTERFACE ADAPTER



| APPLICATOR DATA |                |      |
|-----------------|----------------|------|
| CRIMP           | SIZE           | TYPE |
| WIRE            | 1.55 mm [.061] | F    |
| INSUL           | -              | -    |

APPLICATOR INSTRUCTIONS  
408-35042

| TERMINAL DATA: HI-STAT TERMINAL Season Group CRIMP SPECIFICATION |                  |                               |                  |
|--|------------------|-------------------------------|------------------|
| TERMINAL NAME: TERMINAL , FEMALE                                 |                  |                               |                  |
| WIRE STRIP LENGTH  |                  | INSULATION DIAMETER RANGE     |                  |
| 4.34-5.11 mm [.171-.201 IN]                                      |                  | ∅ 1.30-1.60 mm [.051-.063 IN] |                  |
| TERMINAL APPLICATION SPECIFICATION                               | Season Group     |                               |                  |
| TERMINALS APPLIED <sup>5</sup>                                   |                  |                               |                  |
| TE TERMINAL  | HI-STAT TERMINAL | TE TERMINAL                   | HI-STAT TERMINAL |
| 2113919-1  | 503-607-10       |                               |                  |

| WIRE SIZE | CRIMP HEIGHT mm [INCH]        | CRIMP HEIGHT REFERENCE SETTING |
|-----------|-------------------------------|--------------------------------|
| 20 AWG    | 1.25 +/- 0.05 [.049 +/- .002] | 9.0                            |

- <sup>1</sup> RECOMMENDED SPARE PARTS
- <sup>2</sup> REFER TO SUPPLIED INSTRUCTION SHEET FOR CLEANING, LUBRICATION AND STORAGE OF APPLICATOR.
- <sup>3</sup> CRIMP HEIGHT REFERENCE SETTING WAS THE SETTING USED WHEN THE APPLICATOR WAS QUALIFIED AT THE FACTORY. ADJUSTMENT MAY BE NECESSARY WHEN RUNNING APPLICATOR IN THE FIELD.
- 4. UNLESS SPECIFIED OTHERWISE TORQUE VALUES SHALL BE USED PER DOCUMENT, 101-35000.
- <sup>5</sup> TERMINAL LUBRICANT IS RECOMMENDED.

**\*WARNING**  
ON INSTALLATION, SET WIRE DISC TO CRIMP HEIGHT REFERENCE SETTING FOR LARGEST WIRE SIZE. CRIMP HEIGHT REFERENCE SETTINGS GREATER THAN THE VALUE SHOWN MAY CAUSE DAMAGE TO THE CRIMP TOOLING, REFER TO THE INSTRUCTION SHEET FOR PROPER SETUP AND ADJUSTMENTS.

ATLANTIC VERSION  
Shown on sheets 1 of 4 & 2 of 4  
(Pacific version shown on sheets 3 of 4 & 4 of 4)

| LOC | DIST | REV | DATE      | BY | CHKD | APVD |
|-----|------|-----|-----------|----|------|------|
| A   | 66   | A   | 07DEC2015 | BW | TE   |      |
|     |      | B   | 18AUG2016 | JH | TE   |      |
|     |      | C   | 17OCT2016 | LG | GB   |      |
|     |      | D   | 28JUN2019 | FZ | TE   |      |

|   |     |     |     |     |             |                                     |                       |         |
|---|-----|-----|-----|-----|-------------|-------------------------------------|-----------------------|---------|
| - | 1   | -   | 1   | -   | 2119640-1   | PUSH ROD, AIR FEED                  | 250                   |         |
| - | 1   | -   | 1   | -   | 1803259-1   | BUSHING, FLANGED                    | 249                   |         |
| - | 1   | -   | 1   | -   | 2119641-1   | FEED CAM, AIR FEED                  | 248                   |         |
| - | 1   | 1   | 1   | 1   | 7-18023-7   | SCR, SKT HD CAP M3 X 4.0            | 241                   |         |
| - | -   | 1   | -   | 1   | 2119580-1   | MECHANICAL FEED ASSEMBLY            | 239                   |         |
| - | 1   | -   | 1   | -   | 2063440-1   | AIR FEED MODULE                     | 238                   |         |
| - | 2   | -   | 2   | -   | 21045-3     | RING, RETAIN, EXTERN, 3/16 CRESCENT | 172                   |         |
| - | REF | REF | REF | REF | 994970-2    | COUNTER, MAGNETIC                   | 164                   |         |
| - | 1   | -   | 1   | -   | 240638-1    | SPRING, FEED FINGER                 | 163                   |         |
| - | 1   | -   | 1   | -   | 3-23627-7   | PIN, RETAIN, GRVD, 3/16 X .854      | 137                   |         |
| - | 1   | -   | 1   | -   | 2119799-1   | HOLDER, FEED FINGER, AF             | 136                   |         |
| - | 1   | 1   | 1   | 1   | 2119955-1   | ASSY, LUBRICATOR, SIDE FEED         | 113                   |         |
| - | 1   | 1   | 1   | 1   | 2844908-1   | SCREW, LOCKING                      | 99                    |         |
| - | 1   | 1   | 1   | 1   | 2844907-1   | POST, LOCKING                       | 98                    |         |
| - | 1   | 1   | 1   | 1   | 455888-4    | SPACER, CRIMPER                     | 82                    |         |
| - | 1   | 1   | 1   | 1   | 1803607-1   | DOCUMENTATION PACKAGE               | 71                    |         |
| - | 1   | 1   | 1   | 1   | 2119791-9   | DEPRESSOR, WIRE                     | 70                    |         |
| - | 1   | 1   | 1   | 1   | 2119943-1   | WASHER, SPACER                      | 69                    |         |
| - | 1   | 1   | 1   | 1   | 2119740-1   | TAG, IDENTIFICATION                 | 67                    |         |
| - | 2   | 2   | 2   | 2   | 2168078-1   | SCREW, DRIVE, RH, RoHS, 2 x .188    | 66                    |         |
| - | 1   | 1   | 1   | 1   | 2168083-2   | SCR, SKT HD CAP, RoHS, M4 X 8.0     | 60                    |         |
| - | 1   | 1   | 1   | 1   | 5-18022-5   | SCR, HEX HD CAP, M4 X 6.0           | 59                    |         |
| - | 1   | 1   | 1   | 1   | 1338685-1   | PAWL, FEED                          | 56                    |         |
| - | 2   | 2   | 2   | 2   | 2168083-3   | SCR, SKT HD CAP, RoHS, M4 X 12.0    | 54                    |         |
| - | 2   | 2   | 2   | 2   | 1-2168083-0 | SCR, SKT HD CAP, RoHS, M4 X 10      | 53                    |         |
| - | 1   | 1   | 1   | 1   | 5018030-1   | NUT, HEX, REG, RoHS, M3             | 52                    |         |
| - | 1   | 1   | 1   | 1   | 811242-5    | BUMPER, HOLD DOWN                   | 51                    |         |
| - | 1   | 1   | 1   | 1   | 690753-6    | SPACER, TONKER                      | 50                    |         |
| - | 1   | 2   | 1   | 2   | 18023-9     | SCR, SKT HD CAP M4 X 6.0            | 49                    |         |
| - | -   | 1   | -   | 1   | 2119652-1   | FEED CAM, PRE FEED                  | 48                    |         |
| - | -   | 1   | -   | 1   | 2119653-1   | FEED CAM, POST FEED                 | 47                    |         |
| - | 1   | 1   | 1   | 1   | 1803583-9   | APPLICATOR BASIC ASSEMBLY, SF       | 46                    |         |
| - | 1   | 1   | 1   | 1   | 1803515-1   | RAM ASSEMBLY, SF ATLANTIC           | 44                    |         |
| - | 1   | 1   | 1   | 1   | 1803602-1   | SCR, BHSC, RoHS (M8 X 25)           | 41                    |         |
| - | 2   | 2   | 2   | 2   | 2079383-5   | SCR, BHSC, RoHS (M4 X 20)           | 33                    |         |
| - | 2   | 2   | 2   | 2   | 2-2844962-3 | SPACER, CYLINDRICAL, STRIP GUIDE    | 30                    |         |
| - | 1   | 1   | 1   | 1   | 2844992-1   | ASSEMBLY, STRIP GUIDE               | 29                    |         |
| - | 1   | 1   | 1   | 1   | 1320928-2   | STRIP GUIDE                         | 24                    |         |
| - | 1   | 1   | 1   | 1   | 2168083-2   | SCR, SKT HD CAP, RoHS, M4 X 8.0     | 21                    |         |
| - | 2   | 2   | 2   | 2   | 1-18028-2   | WASHER, FLAT, REG M4                | 20                    |         |
| - | 1   | 1   | 1   | 1   | 2119533-9   | STRIPPER, SIDE FEED                 | 19                    |         |
| - | 1   | 1   | 1   | 1   | 2119806-1   | INSERT, SHEAR                       | 13                    |         |
| - | 1   | 1   | 1   | 1   | 3-22280-3   | SPRING, COMPRESSION                 | 12                    |         |
| - | 1   | 1   | 1   | 1   | 1-356885-4  | STOP, SHEAR                         | 11                    |         |
| - | 1   | 1   | 1   | 1   | 2119805-1   | SHEAR HOLDER, FRONT                 | 10                    |         |
| - | 1   | 1   | 1   | 1   | 318707-1    | FLOATING SHEAR, FRONT               | 9                     |         |
| - | 1   | 2   | 2   | 1   | 1           | 6-1633933-6                         | ANVIL, COMBINATION    | 8       |
| - | -   | -   | -   | -   | -           | -                                   | 7                     |         |
| - | -   | -   | -   | -   | -           | -                                   | 6                     |         |
| - | 1   | 1   | 1   | 1   | 2119757-1   | DEPRESSOR, SHEAR                    | 5                     |         |
| - | -   | -   | -   | -   | -           | -                                   | 4                     |         |
| - | -   | -   | -   | -   | -           | -                                   | 3                     |         |
| - | -   | -   | -   | -   | -           | -                                   | 2                     |         |
| - | 1   | 2   | 2   | 1   | 1           | 7-1633713-0                         | CRIMPER, WIRE PREMIUM | 1       |
| - | 77  | -72 | -71 | -2  | -1          | PART NO                             | DESCRIPTION           | ITEM NO |

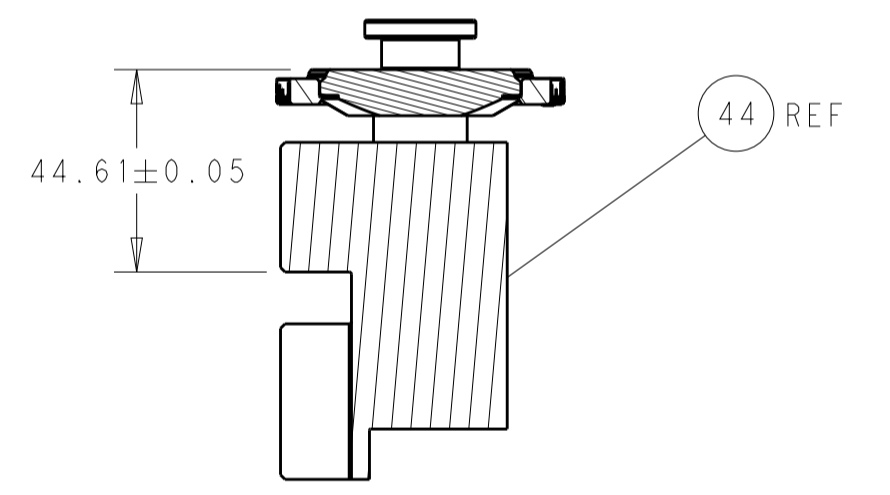
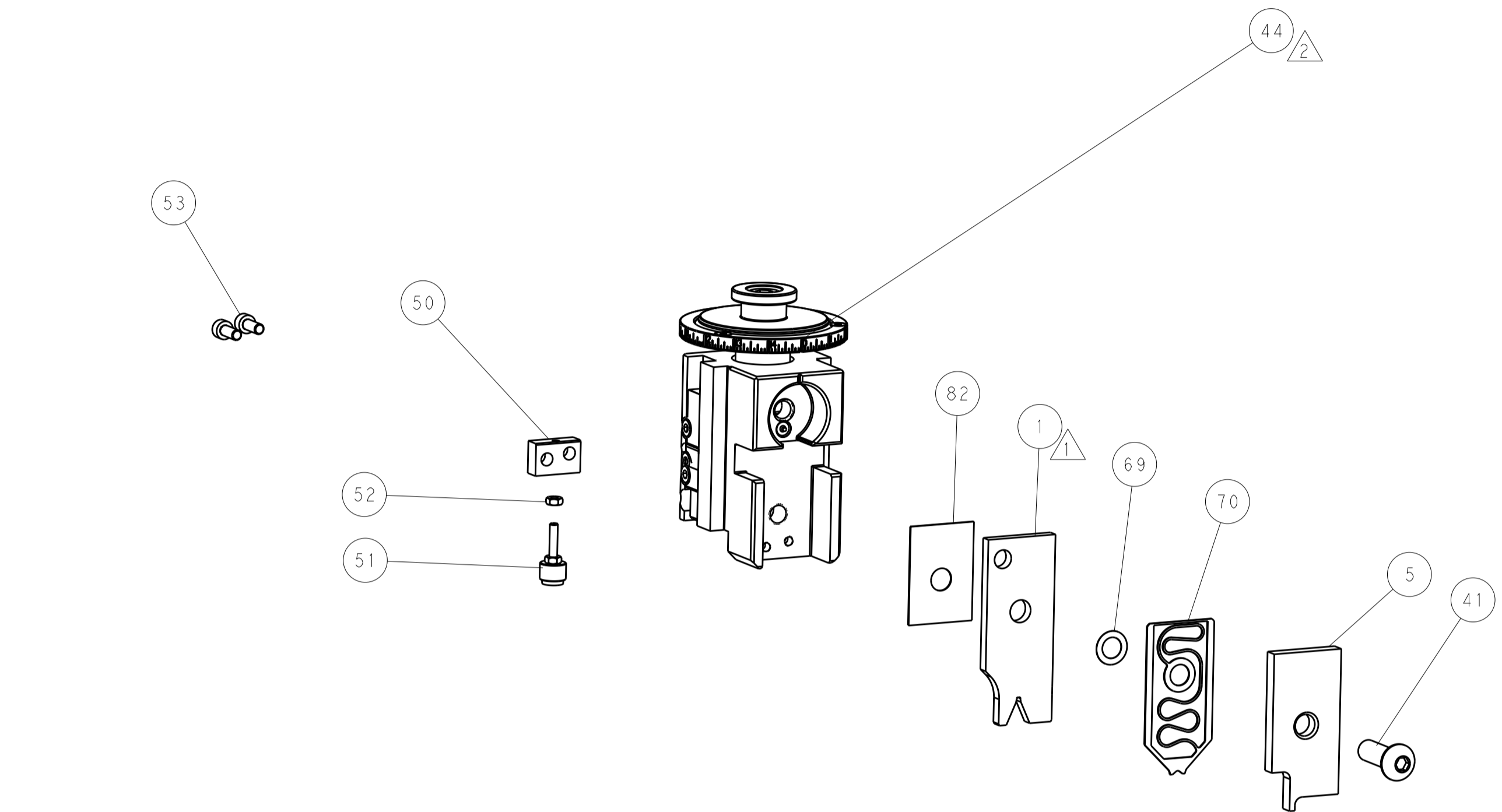
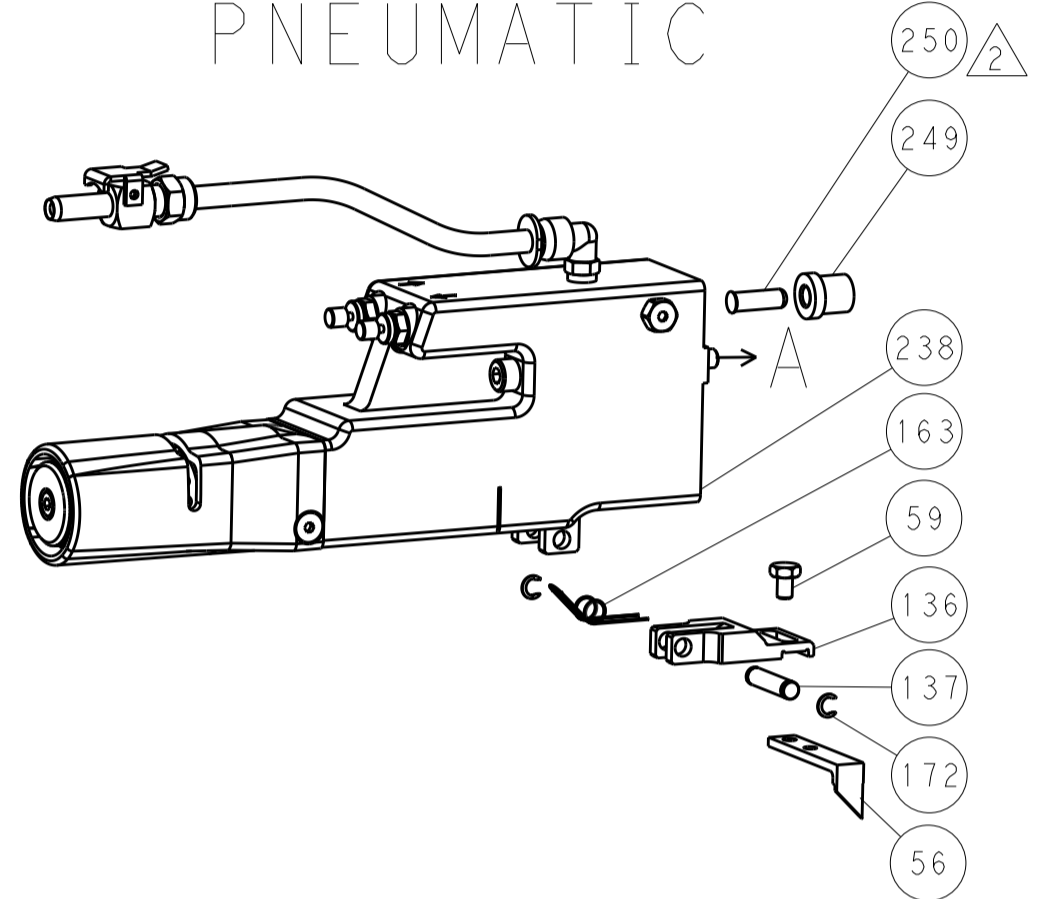
|             |  |  |  |                         |  |  |  |
|-------------|--|--|--|-------------------------|--|--|--|
| DIMENSIONS: |  | TOLERANCES UNLESS OTHERWISE SPECIFIED: |  | DWG: J. HOU 22OCT2015   |  | TE Connectivity  |  |
| mm          |  | 0 PLC ±                                |  | CHK: L. ZHANG 22OCT2015 |  | Harrisburg, PA 17105-3608  |  |
|             |  | 1 PLC ±                                |  | APVD: H. GUO 22OCT2015  |  | NAME: Ocean Side Feed Applicator                                     |  |
|             |  | 3 PLC ±                                |  | PRODUCT SPEC            |  | SIZE: CAGE CODE: DRAWING NO: RESTRICTED TO                           |  |
|             |  | 4 PLC ±                                |  | APPLICATION SPEC        |  | A1 00779 C=2836085   |  |
|             |  | ANGLES                                 |  | WEIGHT                  |  | Customer Accessible Production Drawing SCALE: 1:2 SHEET 1 OF 4 REV D |  |

| LOC |    | DIST |     | REVISIONS   |      |     |      |
|-----|----|------|-----|-------------|------|-----|------|
| A   | 66 | P    | LYM | DESCRIPTION | DATE | DWN | APVD |
|     |    | -    |     | SEE SHEET 1 |      |     |      |

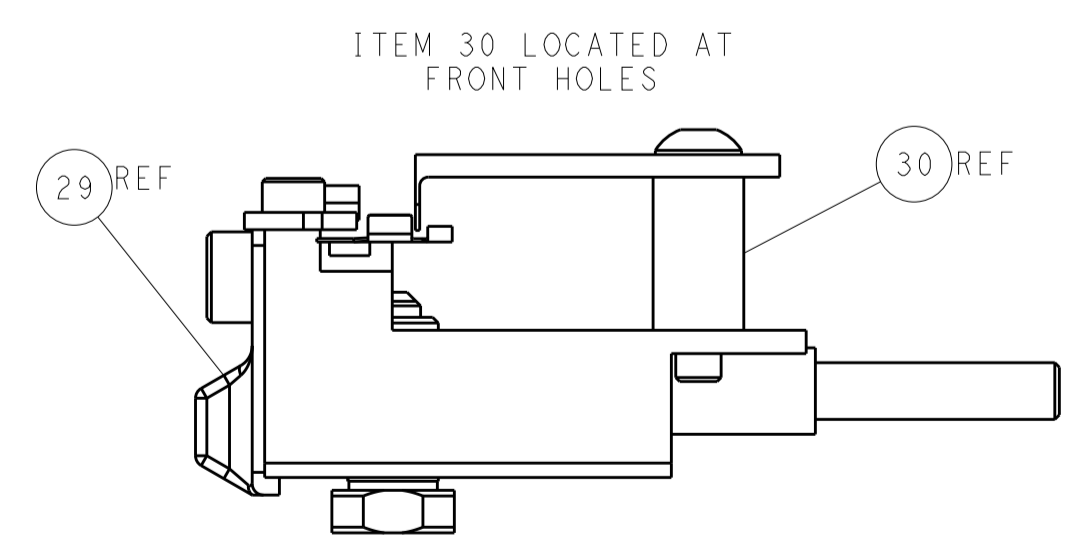
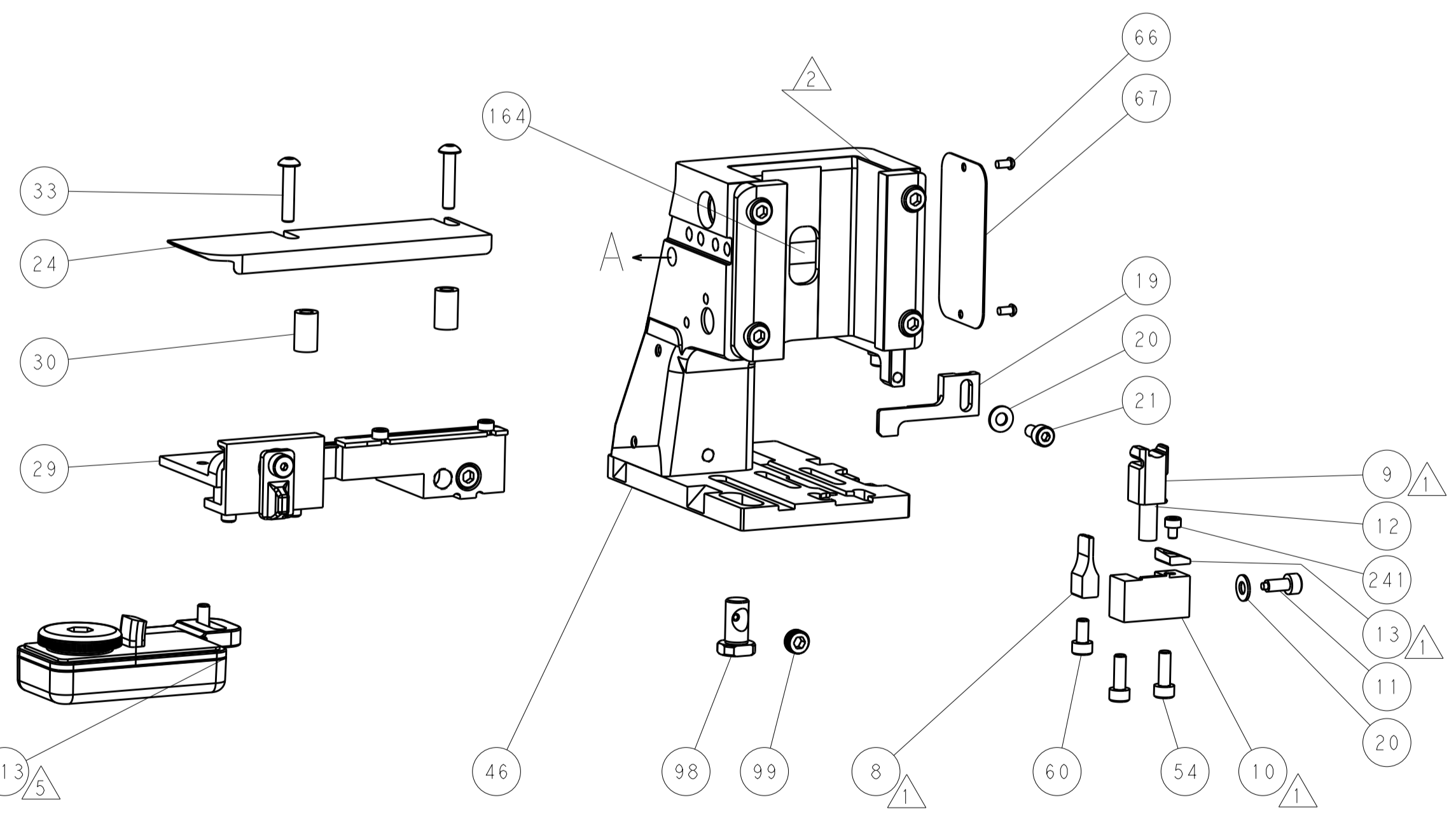
# FEED TYPE MECHANICAL



# PNEUMATIC

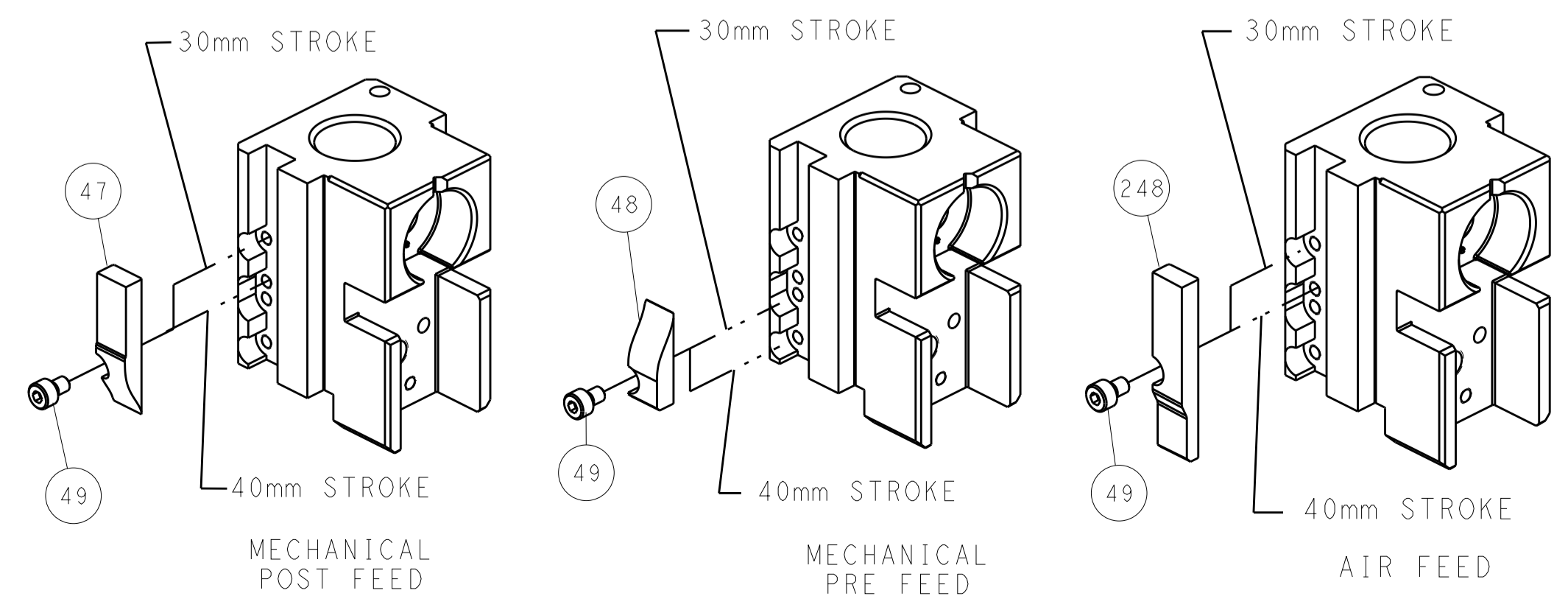


RAM SET-UP



FEED TRACK POSITION GUIDE BY WIRE BARREL

# CAM POSITIONS



**ATLANTIC VERSION**  
 Shown on sheets 1 of 4 & 2 of 4  
 (Pacific version shown on sheets 3 of 4 & 4 of 4)

|             |         |  |         |  |         |                                  |  |
|-------------|---------|--|---------|--|---------|----------------------------------|--|
| DIMENSIONS: |         | TOLERANCES UNLESS OTHERWISE SPECIFIED: |         | DWN: J. HOU 22OCT2015                  |         | TE Connectivity                  |  |
| mm          | 0 PLC ± | 1 PLC ±                                | 2 PLC ± | 3 PLC ±                                | 4 PLC ± | Harrisburg, PA 17105-3608        |  |
| MATERIAL:   |         | FINISH:                                |         | CHK: L. ZHANG 22OCT2015                |         | NAME: Ocean Side Feed Applicator |  |
|             |         |  |         | APVD: H. GUO 22OCT2015                 |         | SIZE: A1                         |  |
|             |         |  |         | PRODUCT SPEC:                          |         | CAGE CODE: 00779                 |  |
|             |         |  |         | APPLICATION SPEC:                      |         | DRAWING NO: 2836085              |  |
|             |         |  |         | WEIGHT:                                |         | SCALE: 1:2                       |  |
|             |         |  |         | Customer Accessible Production Drawing |         | SHEET 2 OF 4 REV D               |  |

| PART NUMBER | REVISION | DESCRIPTION              | FEED TYPE  |
|-------------|----------|--------------------------|------------|
| 2-2836085-1 | D        | FINE CRIMP HEIGHT ADJUST | MECHANICAL |
| 2-2836085-2 | D        | FINE CRIMP HEIGHT ADJUST | PNEUMATIC  |
| 7-2836085-7 | C        | CRIMP TOOLING KIT        | -          |

PACIFIC VERSION TERMINATOR  
INTERFACE ADAPTER



| APPLICATOR DATA |                 |      |
|-----------------|-----------------|------|
| CRIMP           | SIZE            | TYPE |
| WIRE            | 1.55 mm [.0611] | F    |
| INSUL           | -               | -    |

APPLICATOR INSTRUCTIONS  
408-35042

| TERMINAL DATA: HI-STAT TERMINAL    |                  | Season Group CRIMP SPECIFICATION |                  |
|------------------------------------|------------------|----------------------------------|------------------|
| TERMINAL NAME: TERMINAL, FEMALE    |                  |                                  |                  |
| WIRE STRIP LENGTH                  |                  | INSULATION DIAMETER RANGE        |                  |
| 4.34-5.11 mm [1.71-.201 IN]        |                  | 1.30-1.60 mm [.051-.063 IN]      |                  |
| TERMINAL APPLICATION SPECIFICATION | Season Group     | -                                | -                |
| TERMINALS APPLIED                  |                  |                                  |                  |
| TE TERMINAL                        | HI-STAT TERMINAL | TE TERMINAL                      | HI-STAT TERMINAL |
| 2113919-1                          | 503-607-10       |                                  |                  |

| WIRE SIZE | CRIMP HEIGHT mm [INCH]     | CRIMP HEIGHT REFERENCE SETTING |
|-----------|----------------------------|--------------------------------|
| 20 AWG    | 1.25+/-0.05 [1.049+/-0.02] | 9.0                            |



- 1 RECOMMENDED SPARE PARTS
- 2 REFER TO SUPPLIED INSTRUCTION SHEET FOR CLEANING, LUBRICATION AND STORAGE OF APPLICATOR.
- 3 CRIMP HEIGHT REFERENCE SETTING WAS THE SETTING USED WHEN THE APPLICATOR WAS QUALIFIED AT THE FACTORY. ADJUSTMENT MAY BE NECESSARY WHEN RUNNING APPLICATOR IN THE FIELD.
- 4 UNLESS SPECIFIED OTHERWISE TORQUE VALUES SHALL BE USED PER DOCUMENT, 101-35000.
- 5 TERMINAL LUBRICANT IS RECOMMENDED.

**\*WARNING**  
ON INSTALLATION, SET WIRE DISC TO CRIMP HEIGHT REFERENCE SETTING FOR LARGEST WIRE SIZE. CRIMP HEIGHT REFERENCE SETTINGS GREATER THAN THE VALUE SHOWN MAY CAUSE DAMAGE TO THE CRIMP TOOLING, REFER TO THE INSTRUCTION SHEET FOR PROPER SETUP AND ADJUSTMENTS.

PACIFIC VERSION  
Shown on sheets 3 of 4 & 4 of 4  
(Atlantic version shown on sheets 1 of 4 & 2 of 4)

| LOC | DIST | REVISIONS |     |             |      |     |      |
|-----|------|-----------|-----|-------------|------|-----|------|
| A   | 66   | P         | LTN | DESCRIPTION | DATE | OWN | APVD |
| -   | -    | -         | -   | SEE SHEET 1 | -    | -   | -    |

|   |     |     |             |                                     |                       |   |
|---|-----|-----|-------------|-------------------------------------|-----------------------|---|
| - | 1   | -   | 2119640-1   | PUSH ROD, AIR FEED                  | 250                   |   |
| - | 1   | -   | 1803259-1   | BUSHING, FLANGED                    | 249                   |   |
| - | 1   | 1   | 7-18023-7   | SCR, SKT HD CAP M3 X 4.0            | 241                   |   |
| - | -   | 1   | 2119580-1   | MECHANICAL FEED ASSEMBLY            | 239                   |   |
| - | 1   | -   | 2063440-1   | AIR FEED MODULE                     | 238                   |   |
| - | 2   | -   | 21045-3     | RING, RETAIN, EXTERN, 3/16 CRESCENT | 172                   |   |
| - | REF | REF | 994970-2    | COUNTER, MAGNETIC                   | 164                   |   |
| - | 1   | -   | 240638-1    | SPRING, FEED FINGER                 | 163                   |   |
| - | 1   | -   | 2119641-2   | FEED CAM, AIR FEED                  | 151                   |   |
| - | 1   | 1   | 2168083-8   | SCR, SKT HD CAP, RoHS, M4 X 16      | 144                   |   |
| - | 2   | 2   | 2168083-9   | SCR, SKT HD CAP, RoHS, M4 X 20      | 143                   |   |
| - | -   | 1   | 2119653-2   | FEED CAM, POST FEED                 | 142                   |   |
| - | 1   | 1   | 1-1803583-0 | APPLICATOR BASIC ASSEMBLY, SF       | 141                   |   |
| - | 1   | 1   | 1803516-1   | RAM ASSEMBLY, SF PACIFIC            | 140                   |   |
| - | 1   | -   | 3-23627-7   | PIN, RETAIN, GRVD, 3/16 X .854      | 137                   |   |
| - | 1   | -   | 2119799-1   | HOLDER, FEED FINGER, AF             | 136                   |   |
| 5 | 1   | 1   | 2119955-1   | ASSY, LUBRICATOR, SIDE FEED         | 113                   |   |
| - | 1   | 1   | 2844908-1   | SCREW, LOCKING                      | 99                    |   |
| - | 1   | 1   | 2844907-1   | POST, LOCKING                       | 98                    |   |
| - | 1   | 1   | 455888-4    | SPACER, CRIMPER                     | 82                    |   |
| - | 1   | 1   | 1803607-1   | DOCUMENTATION PACKAGE               | 71                    |   |
| - | 1   | 1   | 2119791-9   | DEPRESSOR, WIRE                     | 70                    |   |
| - | 1   | 1   | 2119943-1   | WASHER, SPACER                      | 69                    |   |
| - | 1   | 1   | 2119740-1   | TAG, IDENTIFICATION                 | 67                    |   |
| - | 2   | 2   | 2168078-1   | SCREW, DRIVE, RH, RoHS, 2 x .188    | 66                    |   |
| - | 1   | 1   | 5-18022-5   | SCR, HEX HD CAP, M4 X 6.0           | 59                    |   |
| - | 1   | 1   | 1338685-1   | PAWL, FEED                          | 56                    |   |
| - | 2   | 2   | 1-2168083-0 | SCR, SKT HD CAP, RoHS, M4 X 10      | 53                    |   |
| - | 1   | 1   | 5018030-1   | NUT, HEX, REG, RoHS, M3             | 52                    |   |
| - | 1   | 1   | 811242-5    | BUMPER, HOLD DOWN                   | 51                    |   |
| - | 1   | 1   | 690753-6    | SPACER, TONKER                      | 50                    |   |
| - | 1   | 2   | 18023-9     | SCR, SKT HD CAP M4 X 6.0            | 49                    |   |
| - | -   | 1   | 2119652-1   | FEED CAM, PRE FEED                  | 48                    |   |
| - | 1   | 1   | 1803602-1   | SCR, BHSC, RoHS (M8 X 25)           | 41                    |   |
| - | 2   | 2   | 2079383-5   | SCR, BHSC, RoHS (M4 X 20)           | 33                    |   |
| - | 2   | 2   | 2-2844962-3 | SPACER, CYLINDRICAL, STRIP GUIDE    | 30                    |   |
| - | 1   | 1   | 2844992-1   | ASSEMBLY, STRIP GUIDE               | 29                    |   |
| - | 1   | 1   | 1320928-2   | STRIP GUIDE                         | 24                    |   |
| - | 1   | 1   | 2168083-2   | SCR, SKT HD CAP, RoHS, M4 X 8.0     | 21                    |   |
| - | 2   | 2   | 1-18028-2   | WASHER, FLAT, REG M4                | 20                    |   |
| - | 1   | 1   | 2119533-9   | STRIPPER, SIDE FEED                 | 19                    |   |
| - | 1   | 1   | 2119806-1   | INSERT, SHEAR                       | 13                    |   |
| - | 1   | 1   | 3-22280-3   | SPRING, COMPRESSION                 | 12                    |   |
| - | 1   | 1   | 1-356885-4  | STOP, SHEAR                         | 11                    |   |
| - | 1   | 1   | 2119805-1   | SHEAR HOLDER, FRONT                 | 10                    |   |
| - | 1   | 1   | 318707-1    | FLOATING SHEAR, FRONT               | 9                     |   |
| - | 1   | 1   | 1           | 6-1633933-6                         | ANVIL, COMBINATION    | 8 |
| - | -   | -   | -           | -                                   | 7                     |   |
| - | -   | -   | -           | -                                   | 6                     |   |
| - | 1   | 1   | 2119757-1   | DEPRESSOR, SHEAR                    | 5                     |   |
| - | -   | -   | -           | -                                   | 4                     |   |
| - | -   | -   | -           | -                                   | 3                     |   |
| - | -   | -   | -           | -                                   | 2                     |   |
| 5 | 1   | 1   | 1           | 7-1633713-0                         | CRIMPER, WIRE PREMIUM | 1 |

| DIMENSIONS: |         | TOLERANCES UNLESS OTHERWISE SPECIFIED: |         | MATERIAL: |         | FINISH:  |          |
|-------------|---------|--|---------|-----------|---------|----------|----------|
| mm          | 0 PLC ± | 1 PLC ±                                | 2 PLC ± | 3 PLC ±   | 4 PLC ± | ANGLES ± | FINISH ± |

| OWN    | CHK      | APVD   | DATE      | NAME   | SIZE | CAGE CODE | DRAWING NO | RESTRICTED TO |
|--------|----------|--------|-----------|--|------|-----------|------------|---------------|
| J. HOU | L. ZHANG | H. GUO | 22OCT2015 | TE Connectivity<br>Harrisburg, PA 17105-3608 | A1   | 00779     | 2836085    | -             |

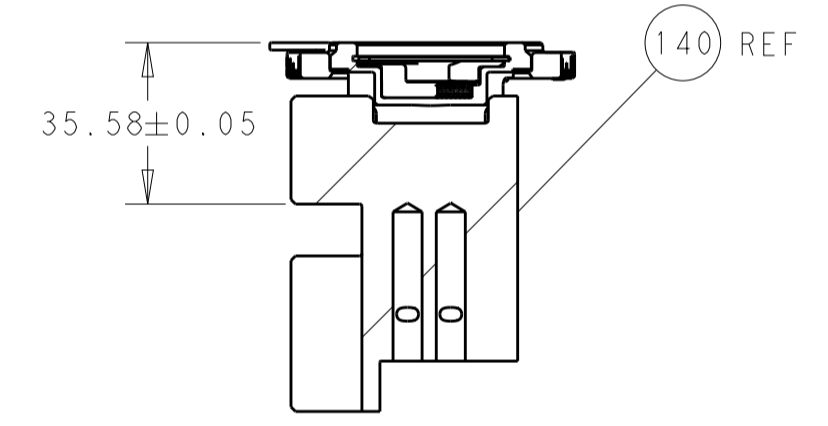
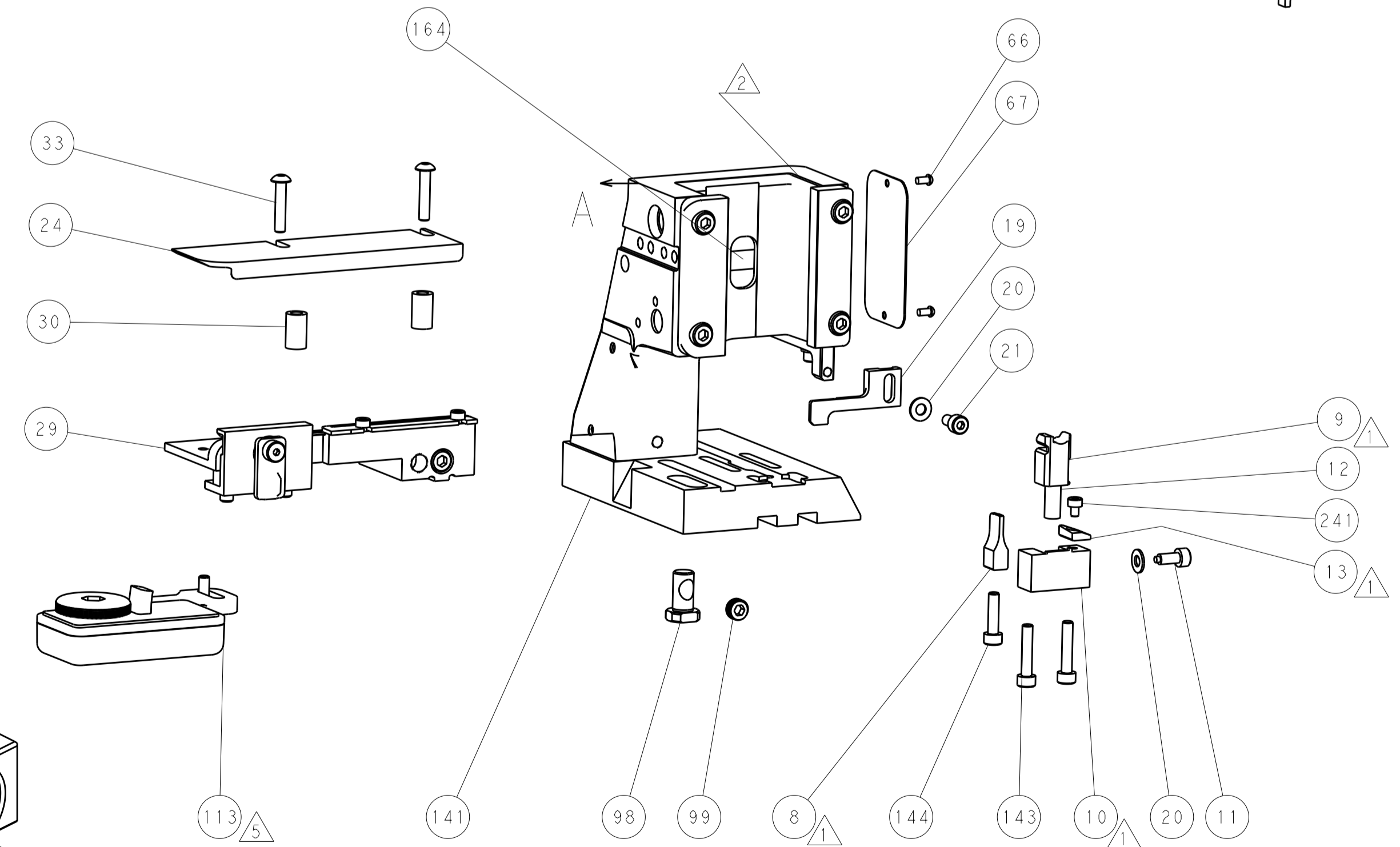
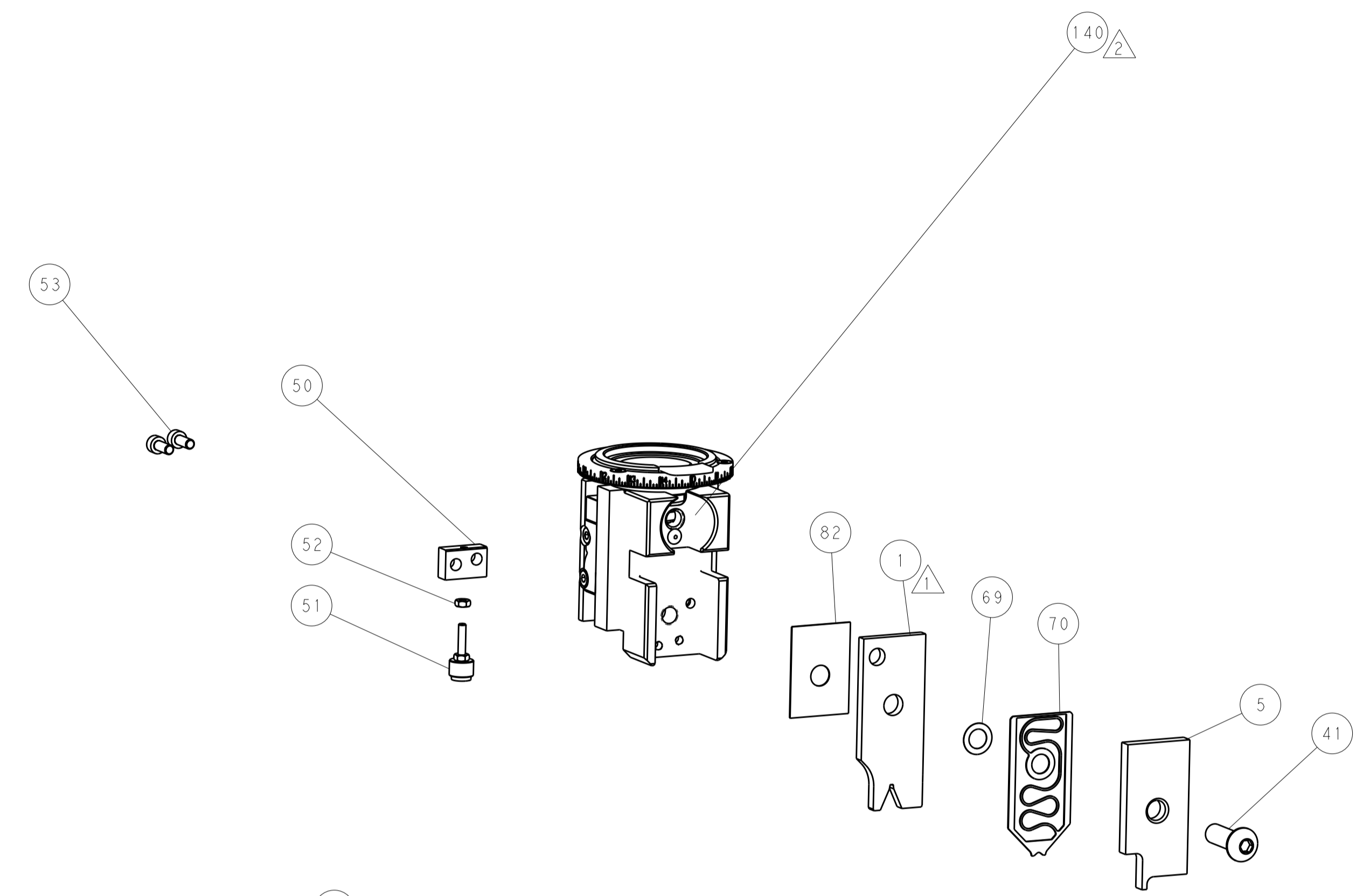
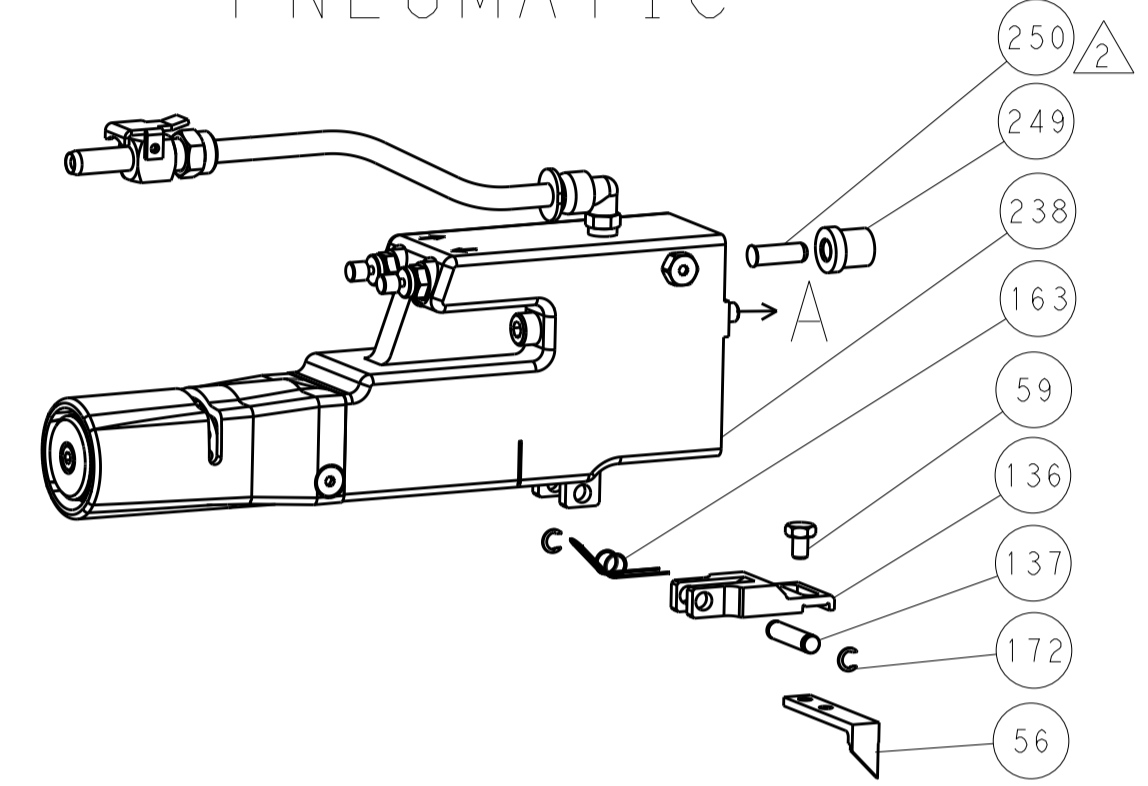
Customer Accessible Production Drawing SCALE 1:2 SHEET 3 OF 4 REV D

| LOC |    | DIST |     | REVISIONS   |      |     |      |
|-----|----|------|-----|-------------|------|-----|------|
| A   | 66 | P    | LTN | DESCRIPTION | DATE | DMN | APVD |
|     |    | -    |     | SEE SHEET 1 | -    | -   | -    |

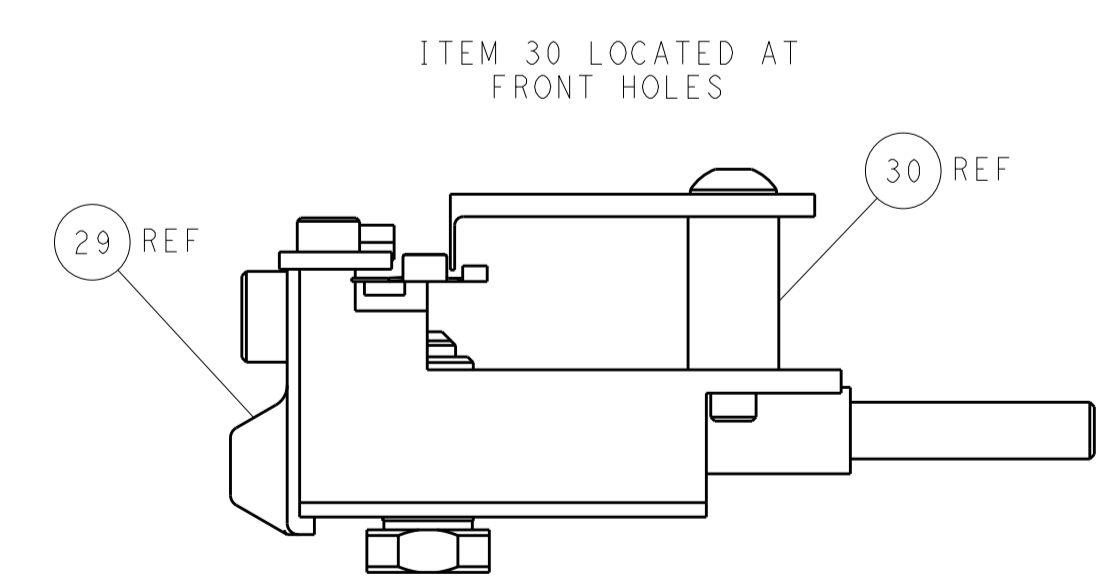
# FEED TYPE MECHANICAL



# PNEUMATIC

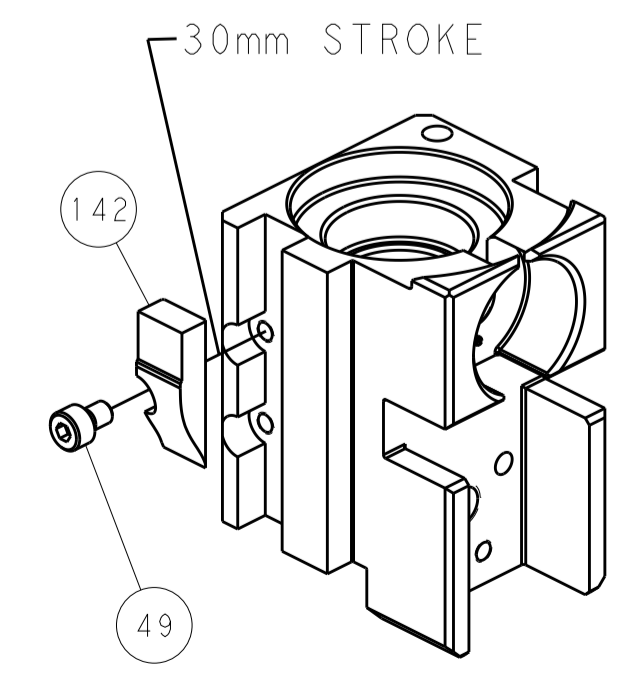


RAM SET-UP

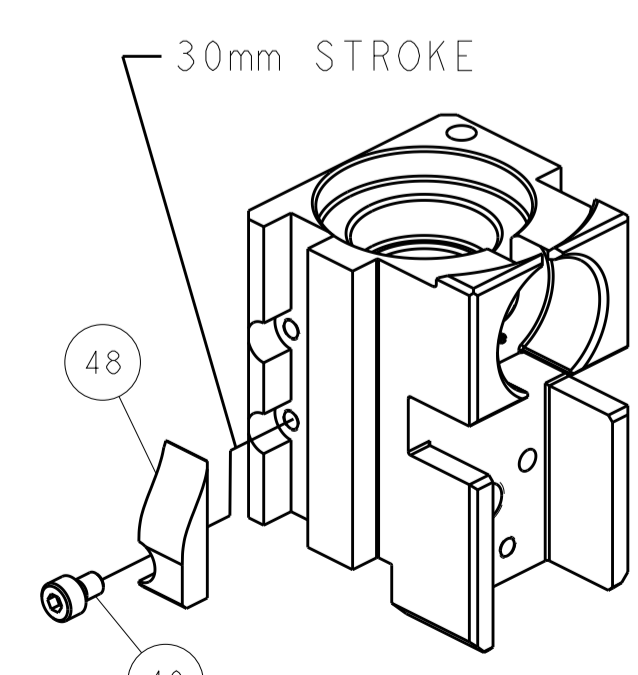


FEED TRACK POSITION GUIDE BY WIRE BARREL

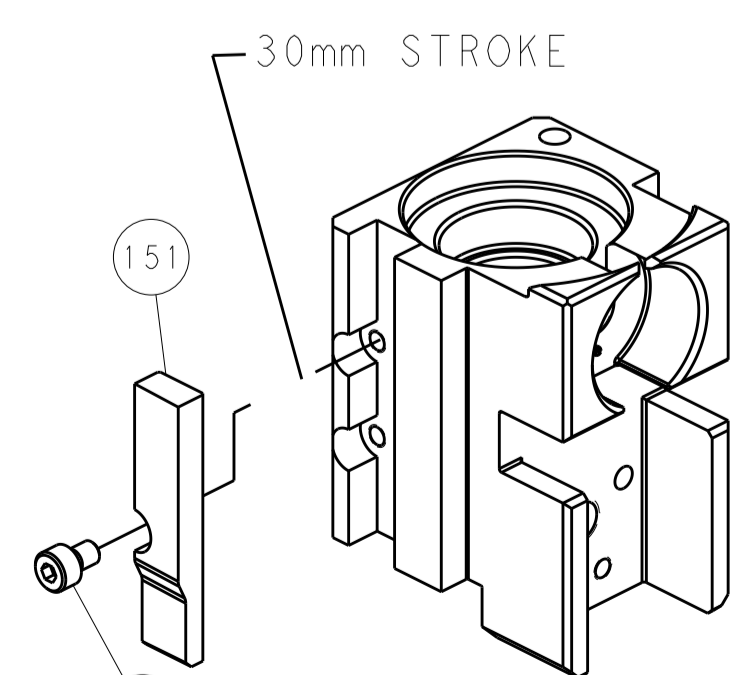
# CAM POSITIONS



MECHANICAL POST FEED



MECHANICAL PRE FEED



AIR FEED

**PACIFIC VERSION**  
 Shown on sheets 3 of 4 & 4 of 4  
 (Atlantic version shown on sheets 1 of 4 & 2 of 4)

|             |        |  |  |                       |  |                         |            |                        |       |                                  |    |   |
|-------------|--------|--|--|-----------------------|--|-------------------------|------------|------------------------|-------|----------------------------------|----|---|
| DIMENSIONS: |        | TOLERANCES UNLESS OTHERWISE SPECIFIED: |  | DWG: J. HOU 22OCT2015 |  | CHK: L. ZHANG 22OCT2015 |            | APVD: H. GUO 22OCT2015 |       | NAME: Ocean Side Feed Applicator |    |   |
| mm          | 0 PLC  | ±                                      |  | PRODUCT SPEC          | SIZE                                   | CAGE CODE               | DRAWING NO | RESTRICTED TO          |       |                                  |    |   |
|             | 1 PLC  | ±                                      |  | APPLICATION SPEC      | A1                                     | 00779                   | 2836085    |                        |       |                                  |    |   |
|             | 2 PLC  | ±                                      |  | WEIGHT                | Customer Accessible Production Drawing |                         | SCALE      | 1:2                    | SHEET | 4                                | OF | 4 |
|             | 3 PLC  | ±                                      |  | ANGLES                |  |                         |            |                        | REV   |                                  |    |   |
|             | 4 PLC  | ±                                      |  |                       |  |                         |            |                        |       |                                  |    |   |
|             | FINISH | ±                                      |  |                       |  |                         |            |                        |       |                                  |    |   |