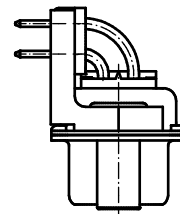
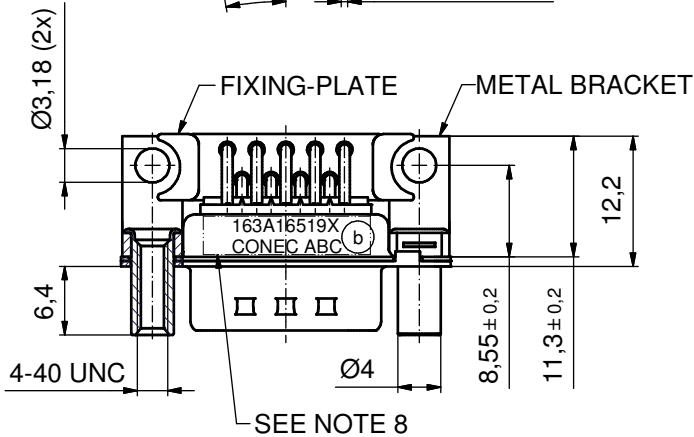
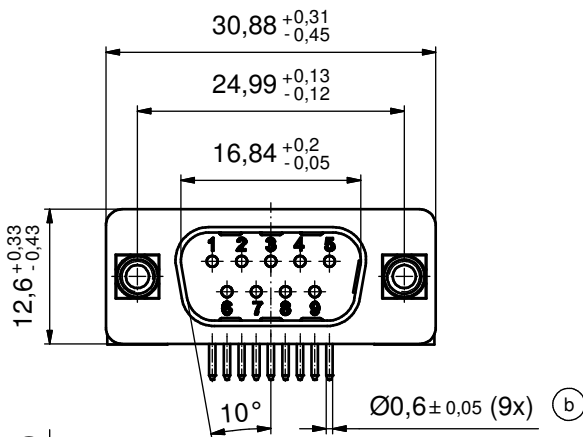
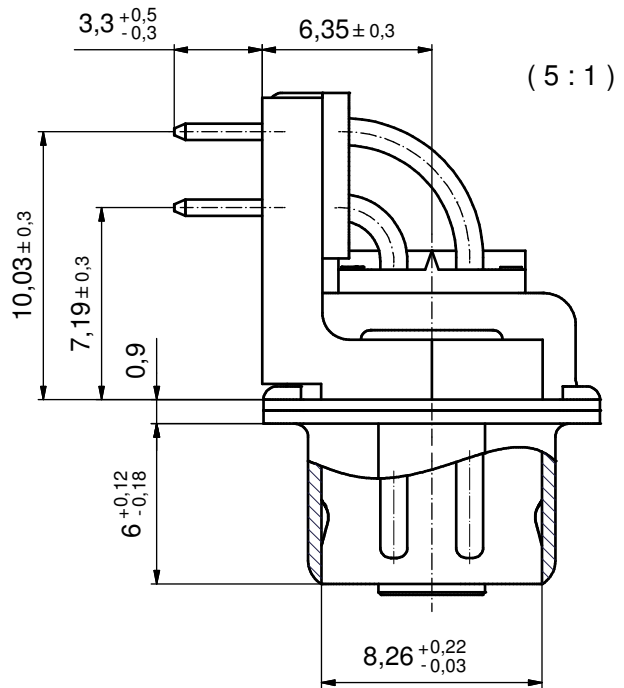
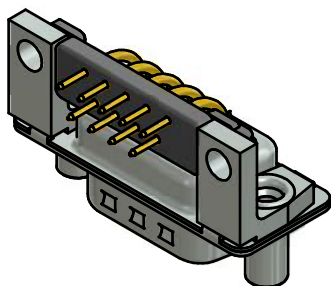


P.C.B. HOLE DRILLINGS  
(P.C.B. TOP SIDE)



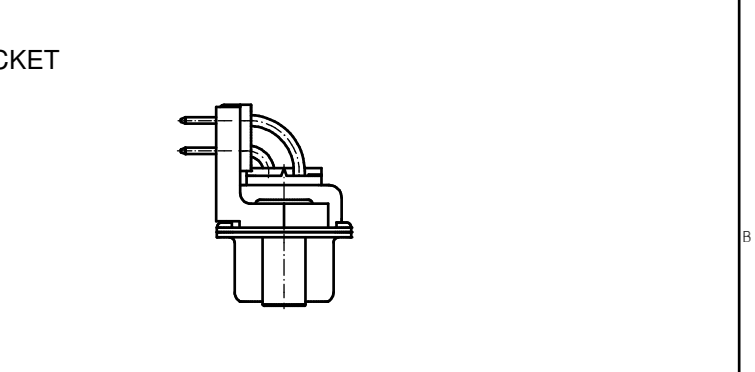
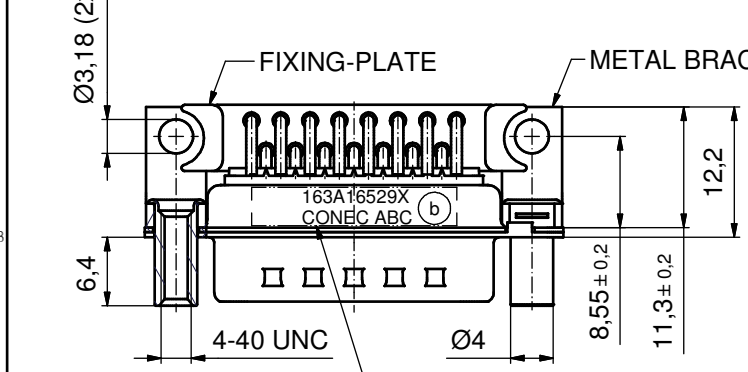
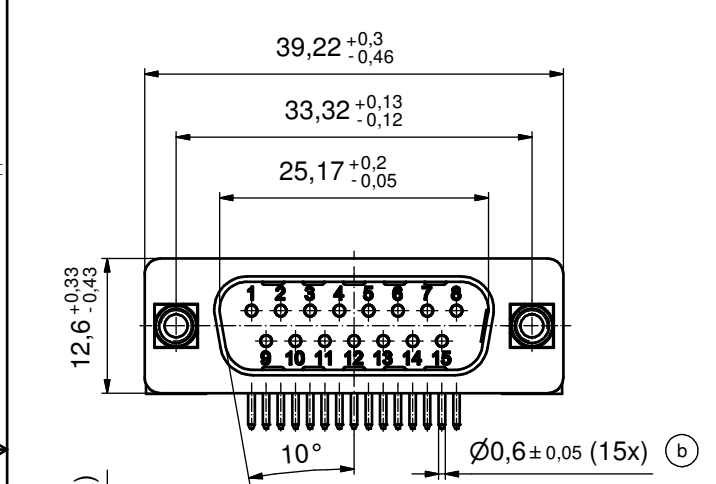
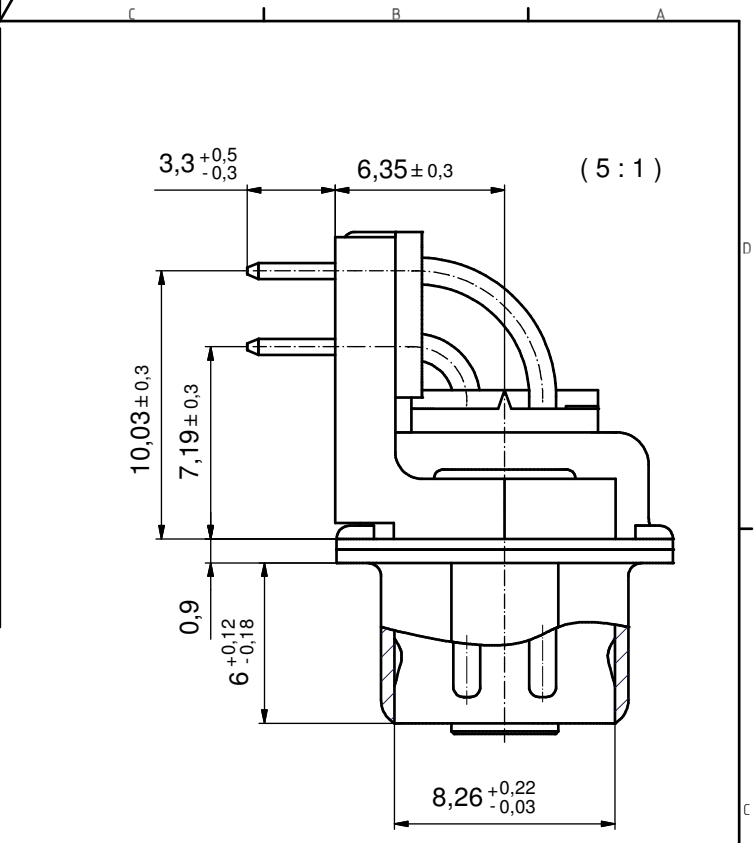
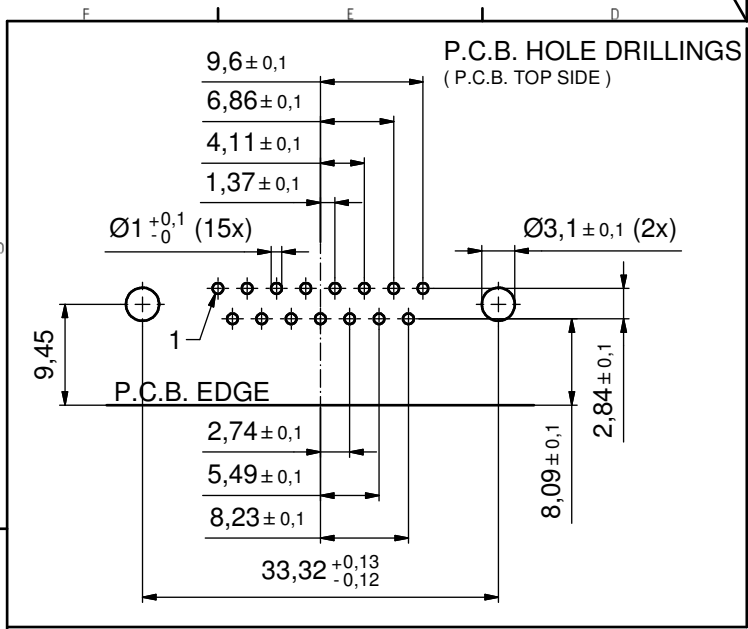
NOTES: (b)

1. METALSHELLS: STEEL; min. 315µm TIN over 40-80µm NICKEL
2. INSULATORS: PBT GF UL 94 V-0; BLACK
3. CONTACTS: COPPER ALLOY  
PLATING: GOLD FLASH over NICKEL
4. METAL BRACKETS: ZINC DIE CAST; 300µm COPPER/40-120µm NICKEL/120-200µm TIN
5. THREADED LOCKS: COPPER ALLOY; min. 200µm TIN over 80µm NICKEL
6. FIXING-PLATE: PBT GF UL 94 V-0; BLACK
7. MAXIMUM TORQUE VALUE FOR THREAD: 6 in.LB
8. CONNECTOR IS PART MARKED: 163A16519X CONEC ABC



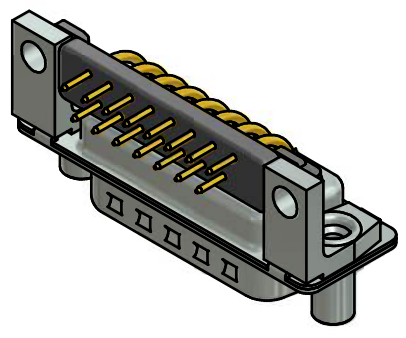
Directive 2002/95/EC RoHS compliant

THIS DRAWING MAY NOT BE COPIED OR REPRODUCED IN ANY WAY, AND MAY NOT BE PASSED ON TO A THIRD PARTY WITHOUT WRITTEN PERMISSION. OWNERSHIP AND COPYRIGHT OF CONEC GmbH DO NOT ALTER CAD DRAWING BY HAND	tolerance		dim. in mm	scale: 2:1 (5:1)		
				material: SEE NOTES		
	date		name		title: <b>D-SUB MALE 90°</b> 9pos. SOLDER PIN ANGLED 0.318inch threaded lock and metal bracket	
	drawn 24.03.2004		Mankopf			
appd. 24.03.2004		Mickenbecker				
norm		d-old		dwg no:		
3 x b A4036 07.07.2011 K.H.				16K1A1129		
a Original				DIN-A3		
rev. description date name				sh: 1/6		
				part no: 163A16519X		



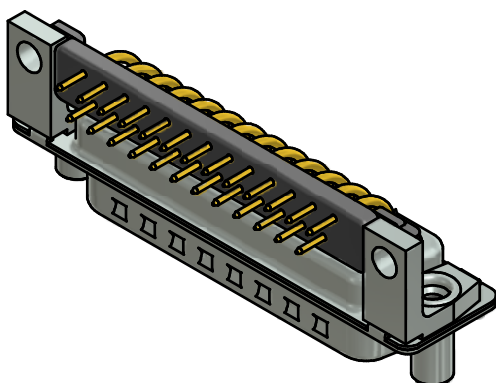
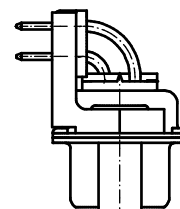
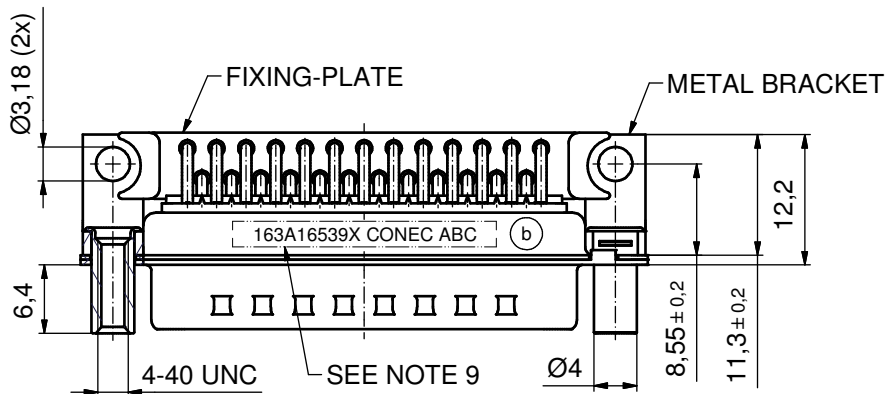
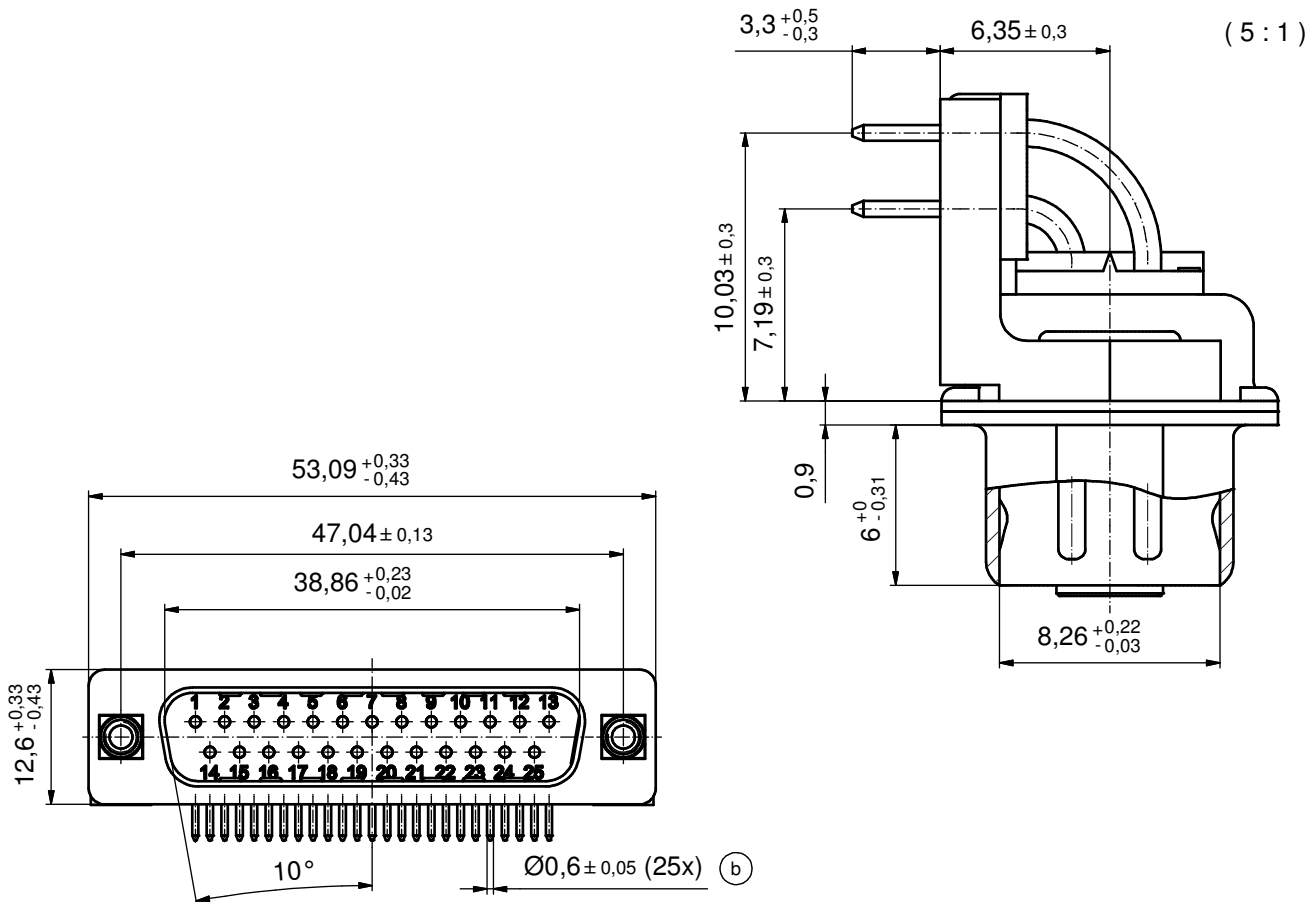
SEE NOTE 8 NOTES: (b)

1. METAL SHELLS: STEEL; min. 315µm TIN over 40-80µm NICKEL
2. INSULATORS: PBT GF UL 94 V-0; BLACK
3. CONTACTS: COPPER ALLOY  
PLATING: GOLD FLASH over NICKEL
4. METAL BRACKETS: ZINC DIE CAST; 300µm COPPER/40-120µm NICKEL/120-200µm TIN
5. THREADED LOCKS: COPPER ALLOY; min. 200µm TIN over 80µm NICKEL
6. FIXING-PLATE: PBT GF UL 94 V-0; BLACK
7. MAXIMUM TORQUE VALUE FOR THREAD: 6 in.LB
8. CONNECTOR IS PART MARKED: 163A16529X CONECC ABC



Directive 2002/95/EC RoHS compliant

THIS DRAWING MAY NOT BE COPIED OR REPRODUCED IN ANY WAY, AND MAY NOT BE PASSED ON TO A THIRD PARTY WITHOUT WRITTEN PERMISSION. OWNERSHIP AND COPYRIGHT OF CONEC GmbH DO NOT ALTER CAD DRAWING BY HAND	tolerance		dim. in mm		scale: 2:1 (5:1)	
					material: SEE NOTES	
	date	name	title:			
	drawn 24.03.2004	Mankopf	<b>D-SUB MALE 90°</b> 15pos. SOLDER PIN ANGLED 0.318inch threaded lock and metal bracket			
	appd. 24.03.2004	Mickenbecker				
norm		dwg no:		DIN-A3		
d-old		16K1A1129		sh: 2/6		
3 x b	A4036	07.07.2011	K.H.	part no: 163A16529X		
a	Original					
rev.	description	date	name	<b>CONEC</b>		



**NOTES:** (b)

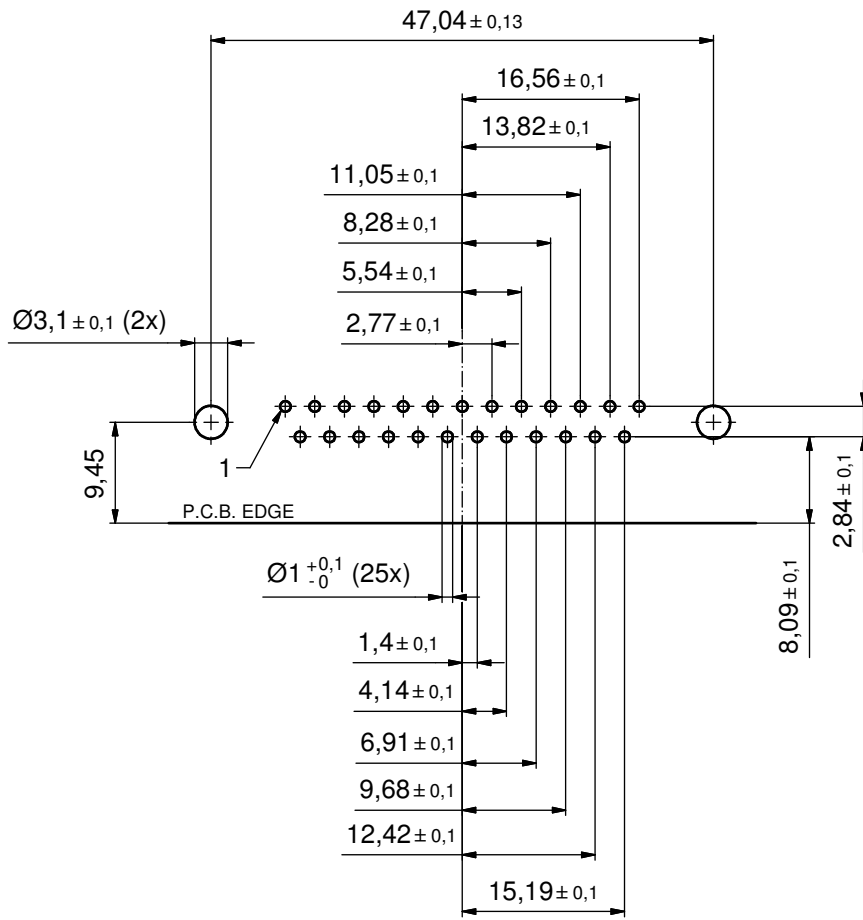
1. METALSHELLS: STEEL; min. 315µm TIN over 40-80µm NICKEL
2. INSULATORS: PBT GF UL 94 V-0; BLACK
3. CONTACTS: COPPER ALLOY  
PLATING: GOLD FLASH over NICKEL
4. METAL BRACKETS: ZINC DIE CAST; 300µm COPPER/40-120µm NICKEL/120-200µm TIN
5. THREADED LOCKS: COPPER ALLOY; min. 200µm TIN over 80µm NICKEL
6. FIXING-PLATE: PBT GF UL 94 V-0; BLACK
7. P.C.B. HOLE DRILLINGS ON SHEET 2
8. MAXIMUM TORQUE VALUE FOR THREAD: 6 in.LB
9. CONNECTOR IS PART MARKED: 163A16539X CONEC ABC

Directive 2002/95/EC RoHS compliant

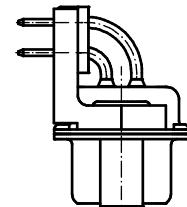
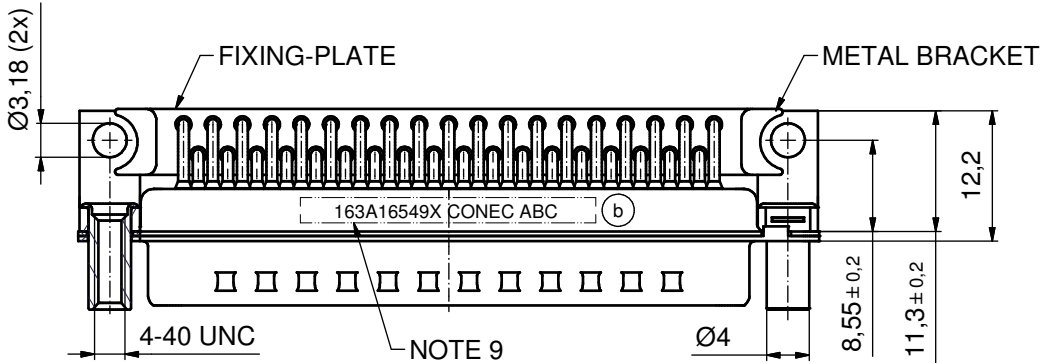
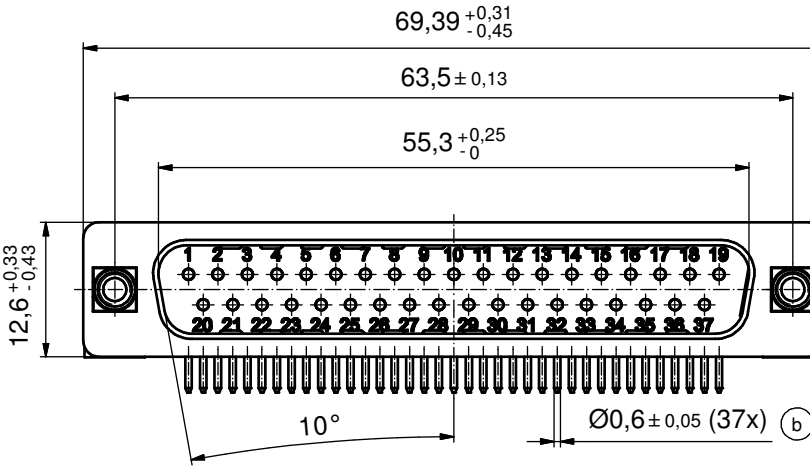
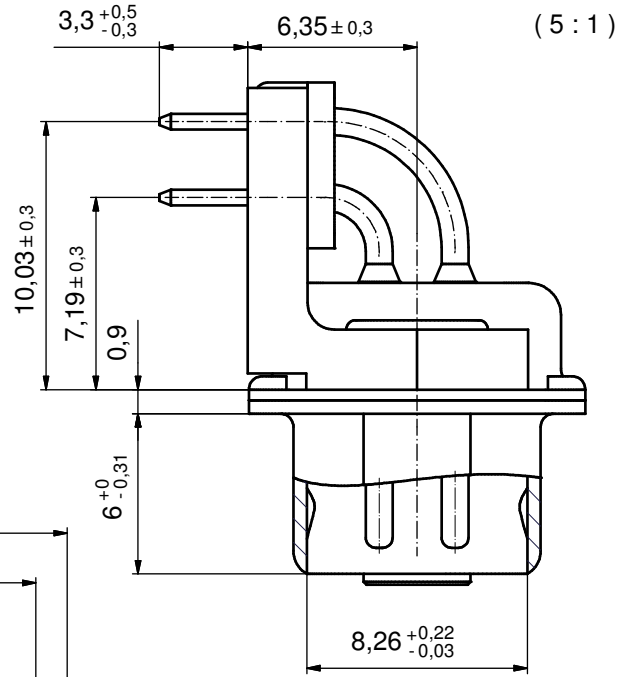
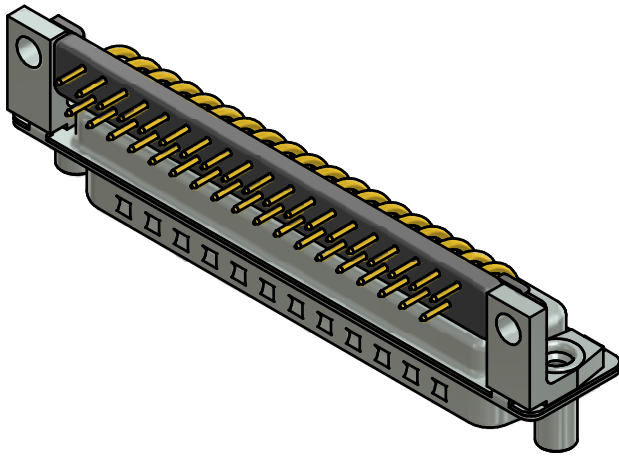
THIS DRAWING MAY NOT BE COPIED OR REPRODUCED IN ANY WAY, AND MAY NOT BE PASSED ON TO A THIRD PARTY WITHOUT WRITTEN PERMISSION. OWNERSHIP AND COPYRIGHT OF CONEC GmbH DO NOT ALTER CAD DRAWING BY HAND	tolerance		dim. in mm	scale: 2:1 (5:1)	
				material: SEE NOTES	
	date	name		title: <b>D-SUB MALE 90°</b> 25pos. SOLDER PIN ANGLED 0.318inch threaded lock and metal bracket	
	drawn 24.03.2004	Mankopf			
	appd. 24.03.2004	Mickenbecker			
norm	d-old		dwg no:		
3 x b	A4036	07.07.2011	K.H.		
rev.	description	date	name	part no: <b>163A16539X</b>	
				DIN-A3	sh: 3/6

# P.C.B. HOLE DRILLINGS

( P.C.B. TOP SIDE )



THIS DRAWING MAY NOT BE COPIED OR REPRODUCED IN ANY WAY, AND MAY NOT BE PASSED ON TO A THIRD PARTY WITHOUT WRITTEN PERMISSION. OWNERSHIP AND COPYRIGHT OF CONEC GmbH DO NOT ALTER CAD DRAWING BY HAND				tolerance	 dim. in mm	scale: 2:1	
							material: SEE SHEET3
				date	name	title: <b>P.C.B. HOLE DRILLINGS</b> D-SUB Male 25pos. 0.318inch with threaded lock and metal bracket	
				drawn 04.07.11	Henneboel		
				appd. 04.07.11	Koch		
				norm			
				d-old		dwg no:	
	a	Original				16K1A1129	DIN-A3
	rev.	description	date			name	part no: SEE SHEET3



**NOTES: (b)**

1. METALSHELLS: STEEL; min. 315µm TIN over 40-80µm NICKEL
2. INSULATORS: PBT GF UL 94 V-0; BLACK
3. CONTACTS: COPPER ALLOY  
PLATING: GOLD FLASH over NICKEL
4. METAL BRACKETS: ZINC DIE CAST; 300µm COPPER/40-120µm NICKEL/120-200µm TIN
5. THREADED LOCKS: COPPER ALLOY; min. 200µm TIN over 80µm NICKEL
6. FIXING-PLATE: PBT GF UL 94 V-0; BLACK
7. P.C.B. HOLE DRILLINGS ON SHEET 2
8. MAXIMUM TORQUE VALUE FOR THREAD: 6 in.LB
9. CONNECTOR IS PART MARKED: **163A16549X CONEC ABC**

Directive 2002/95/EC RoHS compliant

THIS DRAWING MAY NOT BE COPIED OR REPRODUCED IN ANY WAY, AND MAY NOT BE PASSED ON TO A THIRD PARTY WITHOUT WRITTEN PERMISSION. OWNERSHIP AND COPYRIGHT OF CONEC GmbH

DO NOT ALTER CAD DRAWING BY HAND

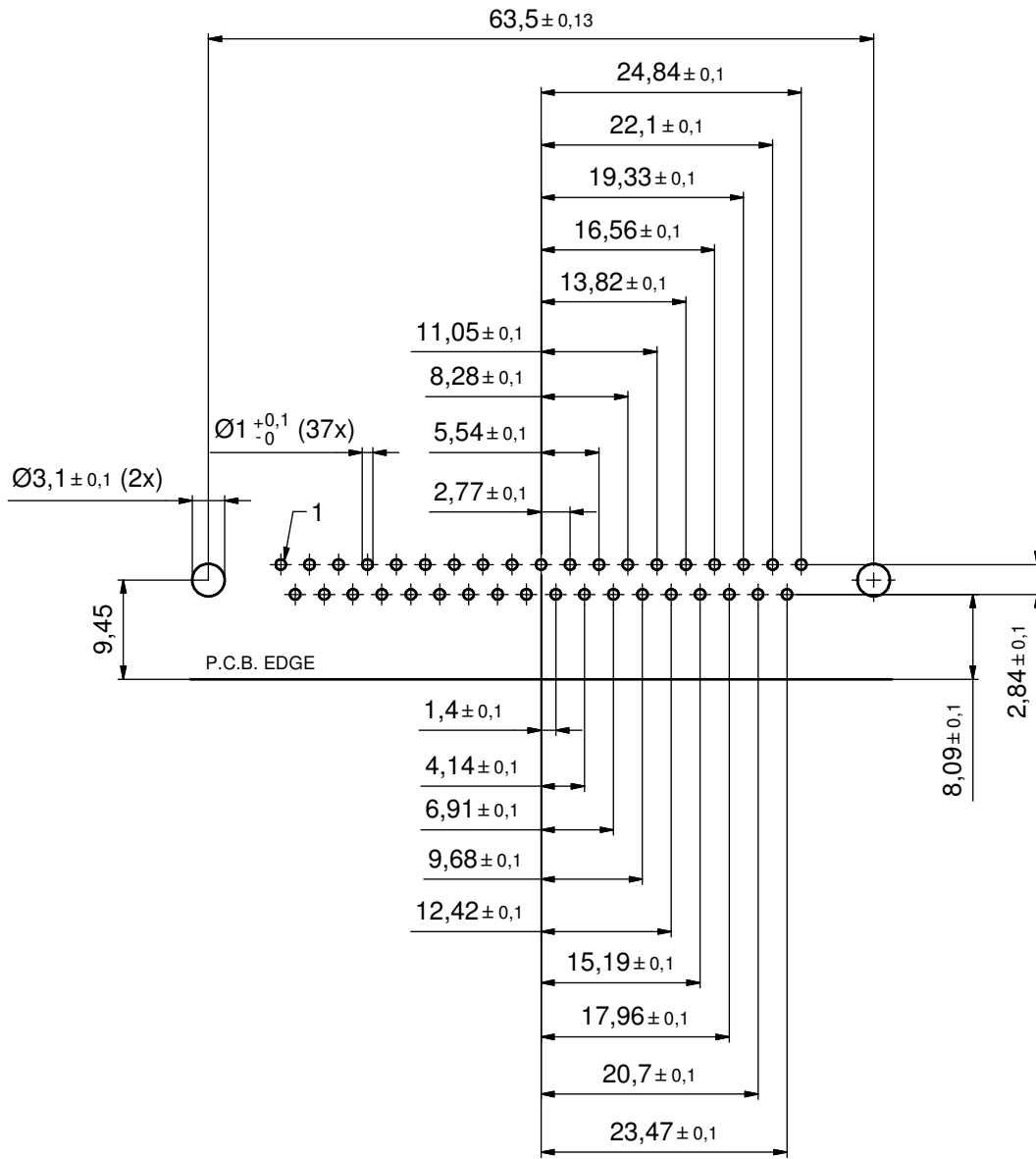
tolerance		dim. in mm	
date	name	drawn	24.03.2004 Mankopf
		appd.	24.03.2004 Mickenbecker
		norm	
		d-old	
3 x b	A4036	07.07.2011	K.H.
a	Original		
rev.	description	date	name



scale:	2:1 (5:1)	
material:	SEE NOTES	
title:	D-SUB MALE 90° 37pos. SOLDER PIN ANGLED 0.318inch threaded lock and metal bracket	
dwg no:	16K1A1129	DIN-A3
part no:	163A16549X	sh: 5/6

# P.C.B. HOLE DRILLINGS

( P.C.B. TOP SIDE )



Directive 2002/95/EC RoHS compliant

THIS DRAWING MAY NOT BE COPIED OR REPRODUCED IN ANY WAY, AND MAY NOT BE PASSED ON TO A THIRD PARTY WITHOUT WRITTEN PERMISSION. OWNERSHIP AND COPYRIGHT OF CONEC GmbH DO NOT ALTER CAD DRAWING BY HAND				tolerance	 dim. in mm	scale: 2:1	
							material: SEE SHEET 5
				date	name	title: <b>P.C.B. HOLE DRILLINGS</b> D-SUB Male 37pos. 0.318inch with threaded lock and metal bracket	
				drawn 04.07.11	Henneboel		
				appd. 04.07.11	Koch		
				norm			
			d-old		dwg no:		
a	Original					16K1A1129	DIN-A3
rev.	description	date				name	part no: SEE SHEET 5