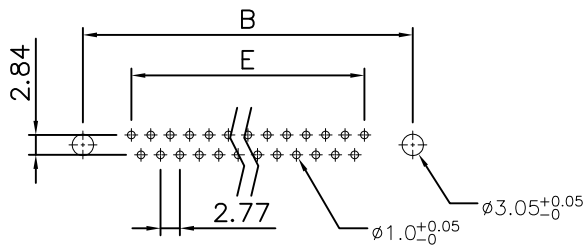
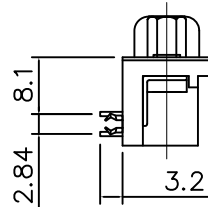
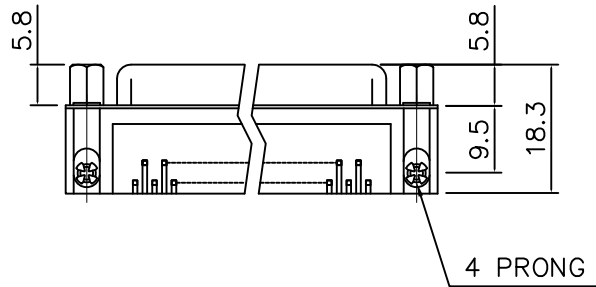
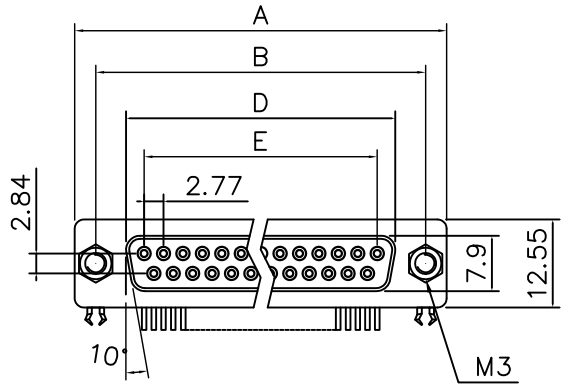


This document is the property of Amphenol Corporation and is delivered on the express condition that it is not to be disclosed, reproduced or used, in whole or in part, for manufacture or sale by anyone other than Amphenol Corporation without its prior consent, & that no right is granted to disclose or to use any information in this document.

# Customer drawing



Recommended PCB layout  
Tolerance:  $\pm 0.05\text{mm}$

## Dimensions

Positions	A	B	D	E
9	30.81	24.99	16.33	11.08
15	39.20	33.30	24.70	19.39
25	53.05	47.04	38.40	33.24
37	69.40	63.50	54.80	49.86



## REVISIONS

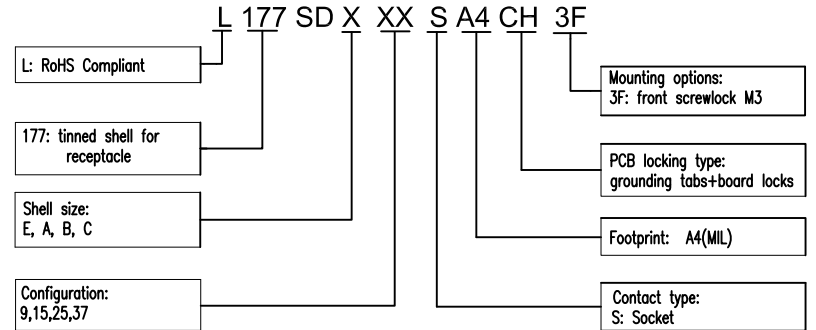
SYM	ECN	DESCRIPTION	DATE	APPROVED
1	HK--	First Release Drawing	01/20/17	IP

## D-SUB TECHNICAL DATA

**SHELL:** SPCC, 100u" min Tin over 50u" min Nickel over 50u" min Copper  
**BODY:** PBT, UL 94V-0 Color: Black.  
**CONTACTS:** Copper alloy  
 15u" Gold over 50u" Nickel on mating area  
 100u" Tin over 50u" Nickel on solder area  
**BOARDLOCK:** Copper alloy, Tin plated  
**SCREWLOCK:** Copper alloy, Nickel plated  
**RIVET:** Copper alloy, Nickel plated  
**ELECTRICAL:** Current Rating: 3A  
 Voltage Rating: 250 VAC (RMS) Max.  
 Contact Resistance: 25 mohms Max.  
 Insulation Resistance: 1000 Mohms Min  
 Withstanding voltage: 1000V Rms

**MARKING :** Amphenol...(Series No.)  
 Commercial reference  
 Manufacturing date

## PRODUCT CODE



UNLESS OTHERWISE SPECIFIED TOLERANCES		APPROVAL		DATE
U.S.	METRIC	DRAWN	FILED	01/20/17
.X +/-	0.50			
.XX +/-	0.30			
.XXX +/-	0.20			
FRACTIONS +/-				
ANGLES +/-	5°			
FOR MATERIALS AND FINISHES SEE NOTES		DRAWING FILE :		
REMOVE SHARP EDGES		ANGLE OF PROJECTION		
DIMENSIONS				
U.S. INCHES				
METRIC MM				

Amphenol		
D-sub connector, R/A Series		
TITLE	SIZE	DRAWING NO.
	A4	L177SDXXXSA4CH3F
SCALE	NONE	REV. 1
SHEET 1 OF 1		