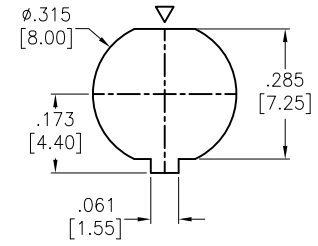
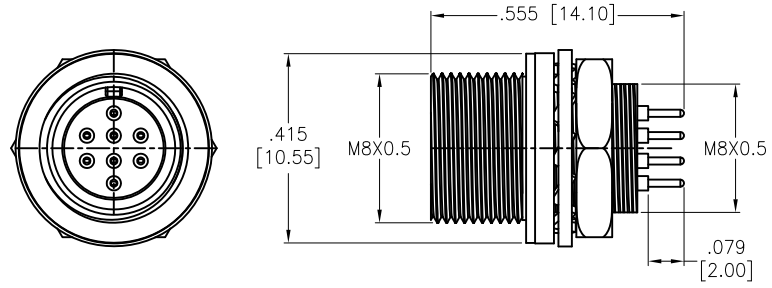
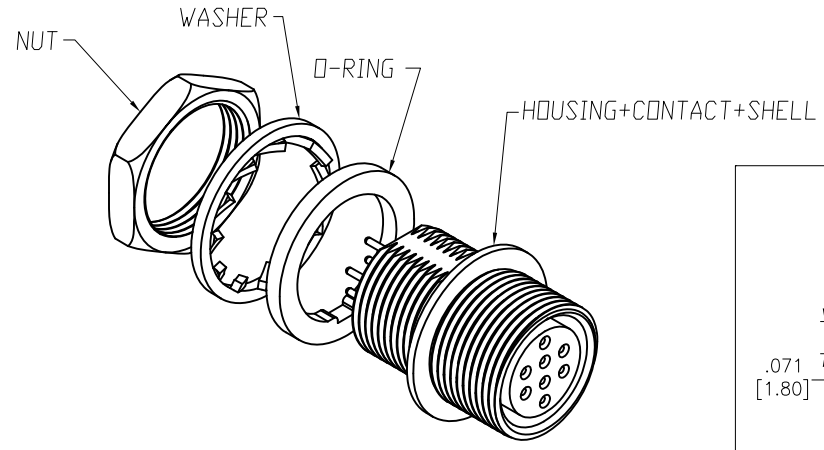


Rev	AWO #	Description	Date	Appr
-		RELEASED	11/23/18	

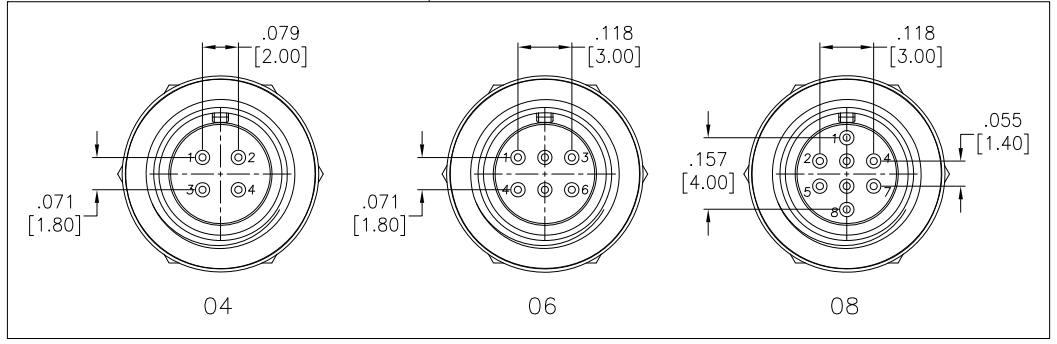
APPROVED: _____
DATE: _____ TITLE: _____



RECOMMENDED PANEL CUT



SD-PNLXX-FFTRH-P00-000



SPECIFICATIONS:
Material:
Housing: Nylon 46, Color: Black
Contacts: Brass, Gold Flash over Nickel
Shell: Zinc Alloy, Nickel plated
O-ring: EDPM, Color: Black
Nut: Brass, Nickel plated
Washer: Brass
Environmental:
Lead free, RoHS compliant



UNLESS OTHERWISE SPECIFIED ALL DIMENSIONS ARE INCHES [MM] TOLERANCES: EXCEPT AS NOTED		
INCHES		
.X	± .10	Ø.X
.XX	± .020	Ø.XX
.XXX	± .015	Ø.XXX
HOLES		
		± .10
		± .015
		± .010
APPROVALS		DATE
DRAWN	HR	11/23/18
CHECKED	AC	11/23/18
APPROVED		

ADAM TECH INTERCONNECTS 909 Rahway Avenue,
Union, NJ 07083
Phone: 908-687-5000
Fax: 908-687-5710

TITLE WATERPROOF CONNECTOR, FEMALE, M8 DIN, REAR PANEL, SCREW MOUNT, STR PCB TYPE			
SIZE X	PART NO. SD-PNLXX-FFTRH-P00-000	REV. -	
REF: S00200T	SCALE: NTS	SHEET 1 OF 1	

6 5 4 3 2 1

6 5 4 3 2 1

D

D

C

C

B

B

A

A