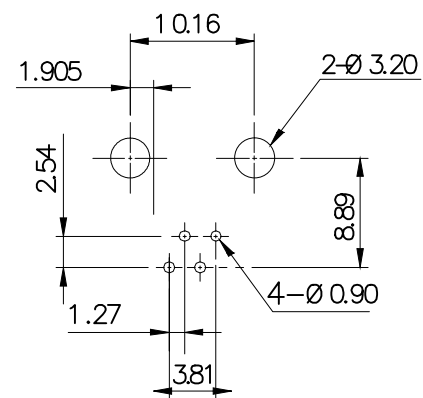


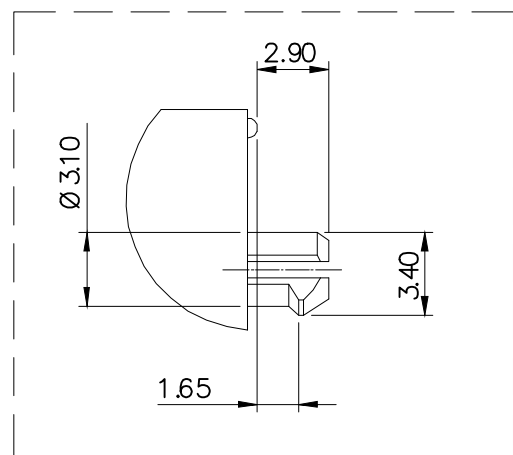
Specification:

- Electrical Char
 - Insulation Resistance: 500MΩ min. 500V DC for 1 minute
 - Contact Resistance: 20mΩ max.
 - Rating Current: 1.5A max.
 - Rating Voltage: 120V AC
 - Dielectric Voltage: 1000 Vrms at 1MA 60 sec. min.
- Physical Char
 - Housing: PBT Glass filled (UL 94V-0) Color: Black
 - Soldering Temperature: 235°C for 5 sec.
 - Spring Wire: 0.45mm Dia Phosphor Bronze
 - 6u" Gold plating over Nickel
 - Temperature Range: -40°C to +85°C
 - Durability: 500 mating cycles min.

3. Packing: Tray



PCB LAYOUT
(Top View)



A(2:1)

RoHS compliant
Unit:mm

Scale	Free				Date	Name	Customer-No.
TOLERANCE					Drawn	04.08.2016	Winnie
.XX	±0.20				Approved	11.03.2020	Winnie
.XXX	±0.13						
.XXXX	±0.05						
DIM	TOL	①	Correct pin counts to 6P4C	11.03.2020	Winnie	ASSMANN WSW-No. A-2014-0-4-R	
		②	Drawn	04.08.2016	Winnie		
Angle	+0°30'	Id.	Modification	Date	Name	Drawing-No. ASS 7327 CO rev01	
						Replace	SHEET

