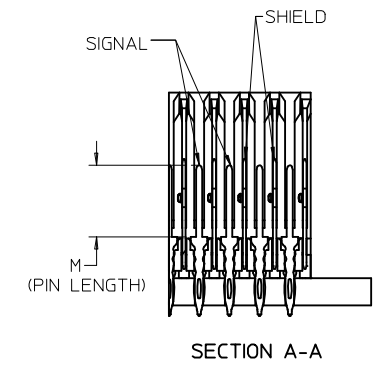
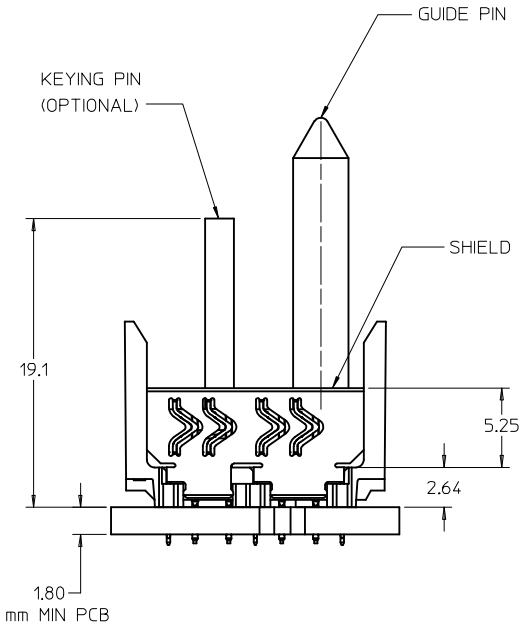
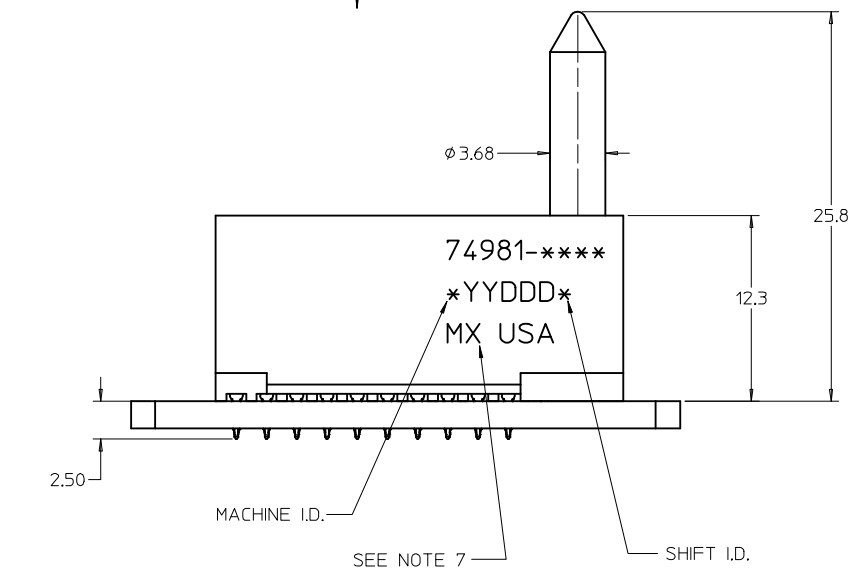
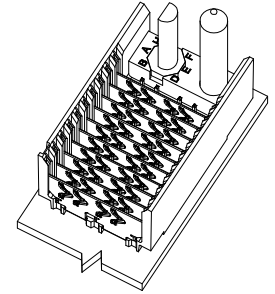


BACKPLANE HOLE PATTERN
RECOMMENDED DIMENSIONS

0.66 DRILL
1.00 PAD
0.56 ± 0.05
PLATED THRU HOLE
Ø 0.10

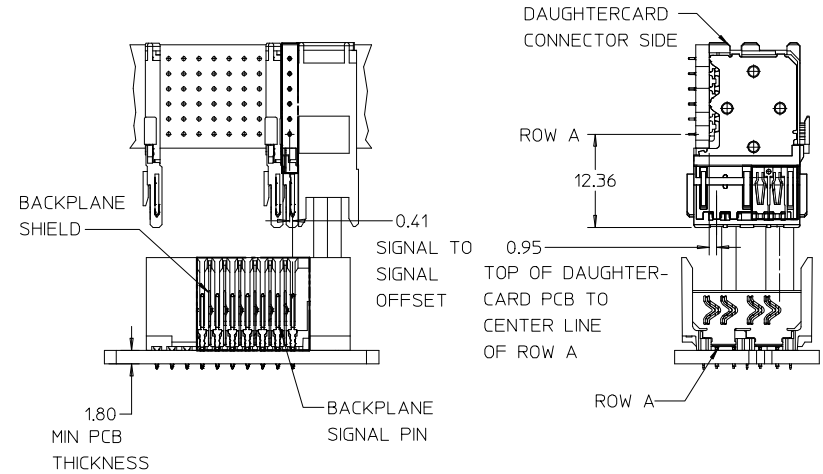


- NOTES:
1. MATERIAL: HOUSING-LIQUID CRYSTAL POLYMER (LCP) GLASS-FILLED. UL 94V-0. COLOR-BLACK. SIGNAL AND SHIELD - HIGH PERFORMANCE COPPER ALLOY.
 2. FINISHES:
CONTACT AREA: SELECTIVE GOLD (Au)
PCB TAILS: SELECTIVE MATTE TIN (Sn)
NICKEL (Ni) OVERALL.
 3. THIS PART CONFORMS TO MOLEX PRODUCT SPECIFICATION PS-74031-999.
 4. FOR MIXED CONTACT LENGTHS - CONSULT MOLEX FOR AVAILABILITY.
 5. FOR SPECIFIC PART NUMBER AND MATING INFORMATION REFER TO SHEET 2.
 6. PACKAGE PER PK-74058-003.
 7. MARK PART NUMBER AND DATE CODE APPROXIMATELY WHERE SHOWN
 8. MAPS (MOLEX ADVANCED PLATING SYSTEM).

THE PRIMARY CARTON WITH A LABEL STATING "ELV AND RoHS COMPLAINT" IS LEAD FREE. CARTONS WITHOUT THIS LABEL MAY CONTAIN LEAD.

LEAD FREE CONVERSION EC NO: UCP2013-0687 DRAWINGS: 2012/08/22 CHKD:MMOLFE 2012/11/27 APPR:SMILLER 2012/12/14	QUALITY SYMBOLS ▽=0 ▽=0 ▽=0	GENERAL TOLERANCES (UNLESS SPECIFIED)		DIMENSION STYLE MM ONLY	SCALE 4:1	DESIGN UNITS METRIC	THIRD ANGLE PROJECTION	
		4 PLACES ± --- ± --- 3 PLACES ± --- ± --- 2 PLACES ± --- ± --- 1 PLACE ± --- ± --- 0 PLACE ± --- ± ---	mm INCH ± --- ± --- ± --- ± --- ± --- ± --- ± --- ± --- ± --- ± ---	DRAWN BY NMARTIN	DATE 2002/09/06	TITLE HSD SALES ASSEMBLY 6 ROW SHIELD END BACKPLANE	DOCUMENT NO. SD-74981-010	SHEET NO. 1 OF 2
		DRAFT WHERE APPLICABLE MUST REMAIN WITHIN DIMENSIONS		APPROVED BY CBIXLER	DATE 2002/09/06	molex		
		ANGULAR ± 1 °		MATERIAL NO. SEE SHT.2	SIZE C			

PART NUMBER	COLUMN	NUMBER OF SIGNAL PIN	NUMBER OF SHIELD	A	B	M	GOLD THICKNESS MICROMETER	TIN THICKNESS MICROMETER
74981-60*1							0.25 MAPS	
74981-*0*1	10	40	10	27.00	18.00	4.75	0.76	0.76-1.52
74981-*0*6							1.27	
74981-75*1							0.25 MAPS	
74981-*5*1	25	100	25	57.00	48.00	6.25	0.76	
74981-*5*6							1.27	
74981-60*2							0.25 MAPS	
74981-*0*2	10	40	10	27.00	18.00	4.25	0.76	
74981-*0*7							1.27	
74981-75*2							0.25 MAPS	
74981-*5*2	25	100	25	57.00	48.00	5.15	0.76	
74981-*5*7							1.27	
74981-60*3							0.25 MAPS	
74981-*0*3	10	40	10	27.00	18.00	4.25	0.76	
74981-*0*8							1.27	
74981-75*3							0.25 MAPS	
74981-*5*3	25	100	25	57.00	48.00	5.15	0.76	
74981-*5*8							1.27	
74981-60*4							0.25 MAPS	
74981-*0*4	10	40	10	27.00	18.00	5.15	0.76	
74981-*0*9							1.27	
74981-75*4							0.25 MAPS	
74981-*5*4	25	100	25	57.00	48.00	5.15	0.76	
74981-*5*9							1.27	



74981 - * * * *

NUMBER OF COLUMNS/PLATING

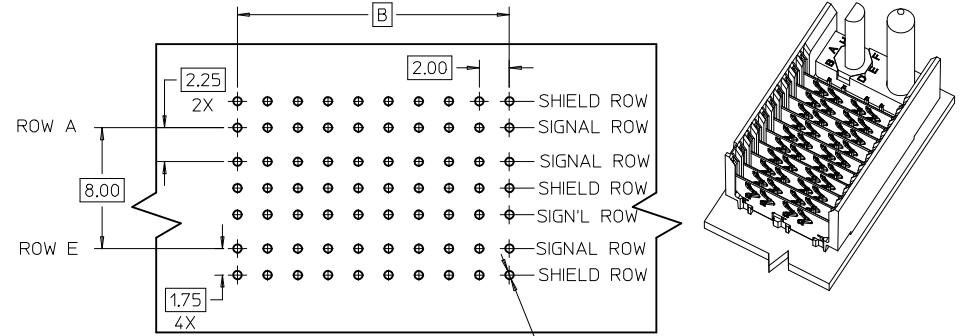
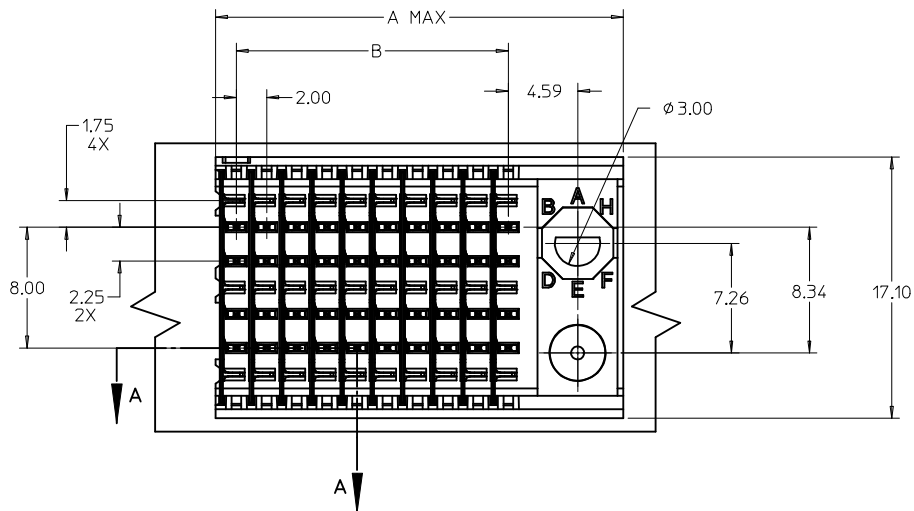
- 10 = 10 COLUMN MATTE TIN (FORMERLY TIN/LEAD)
- 25 = 25 COLUMN MATTE TIN (FORMERLY TIN/LEAD)
- 60 = 10 COLUMN MATTE TIN (MAPS)
- 75 = 25 COLUMN MATTE TIN (MAPS)
- 90 = 10 COLUMN MATTE TIN
- 85 = 25 COLUMN MATTE TIN

CONTACT LOAD (PIN HEIGHT)

- 1 & 6 = 4.75
- 2 & 7 = 6.25
- 3 & 8 = 4.25
- 4 & 9 = 5.15

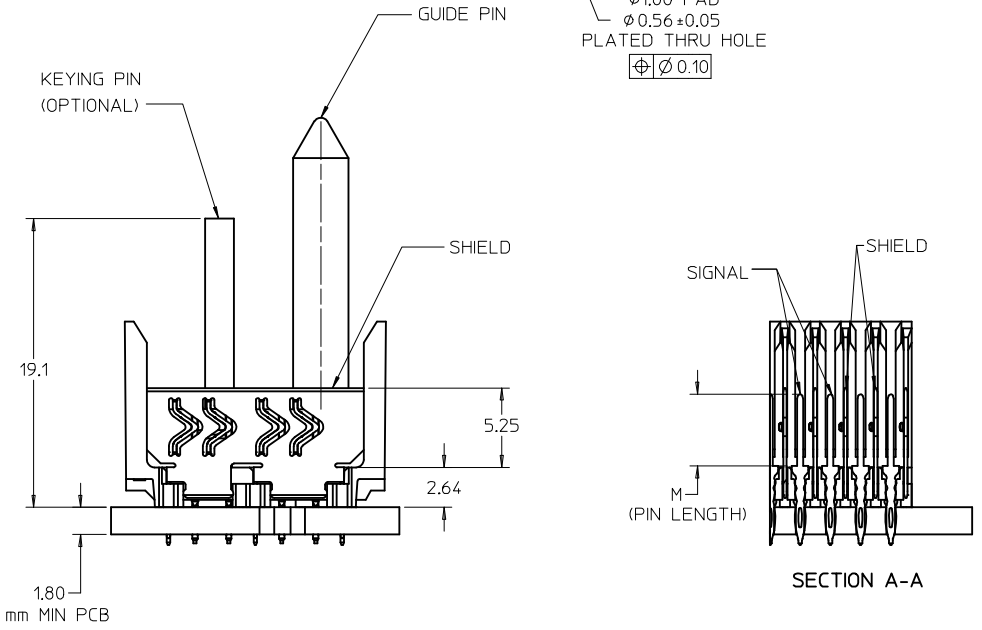
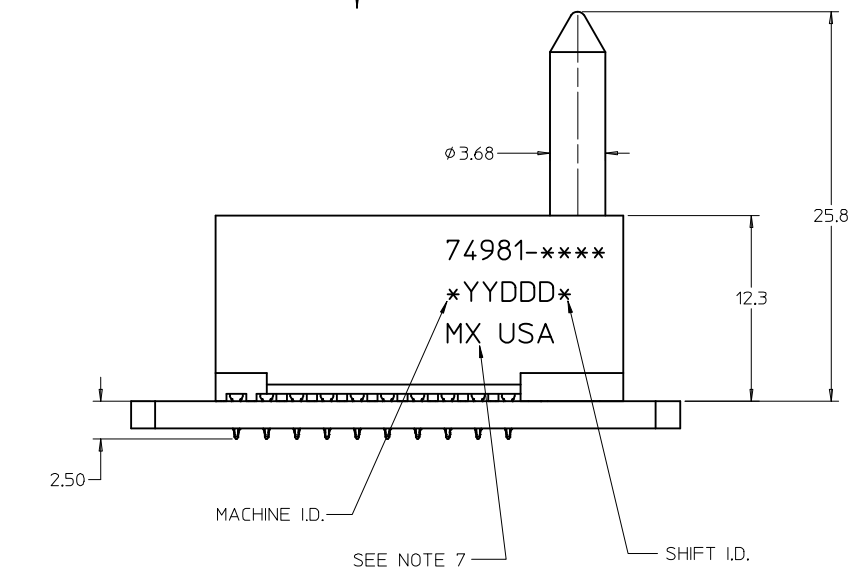
P/N	---0*	---1*	---2*	---3*	---4*	---5*	---6*	---7*	---8*
74981-()	0	A	B	C	D	E	F	G	H
KEYING PIN ORIENTATION									

SEE SHEET 1 EC NO: UCP2013-0687 DRAWINGS 2012/08/22 CHKD:WOLFE 2012/11/27 APPR:SMILLER 2012/12/14	QUALITY SYMBOLS	GENERAL TOLERANCES (UNLESS SPECIFIED)	DIMENSION STYLE MM ONLY	SCALE 4:1	DESIGN UNITS METRIC	THIRD ANGLE PROJECTION
	▽=0	mm INCH	DRAWN BY DATE NMARTIN 2002/09/06	HSD SALES ASSEMBLY 6 ROW SHIELD END BACKPLANE molex DOCUMENT NO. SD-74981-010		
	▽=0	4 PLACES ± --- ± ---	CHECKED BY DATE SREED 2002/09/06			
	▽=0	3 PLACES ± --- ± ---	APPROVED BY DATE CBIXLER 2002/09/06			
	2 PLACES ± --- ± ---	MATERIAL NO.				
		1 PLACE ± --- ± ---	SIZE C	THIS DRAWING CONTAINS INFORMATION THAT IS PROPRIETARY TO MOLEX INCORPORATED AND SHOULD NOT BE USED WITHOUT WRITTEN PERMISSION		
		0 PLACE ± ±		SHEET NO. 2 OF 2		
		ANGULAR ± 1°				
		DRAFT WHERE APPLICABLE MUST REMAIN WITHIN DIMENSIONS				



BACKPLANE HOLE PATTERN
RECOMMENDED DIMENSIONS

$\phi 0.66$ DRILL
 $\phi 1.00$ PAD
 $\phi 0.56 \pm 0.05$
 PLATED THRU HOLE
 $\phi \pm 0.10$

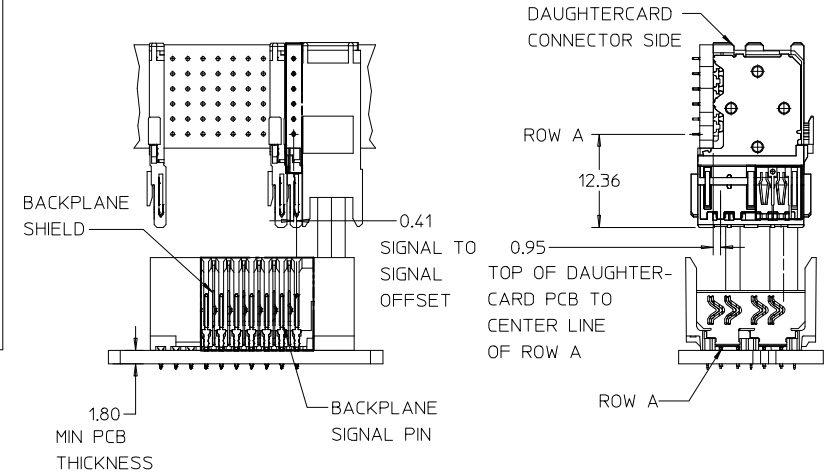


- NOTES:
1. MATERIAL: HOUSING-LIQUID CRYSTAL POLYMER (LCP) GLASS-FILLED. UL 94V-0. COLOR-BLACK. SIGNAL AND SHIELD - HIGH PERFORMANCE COPPER ALLOY.
 2. FINISHES:
CONTACT AREA: SELECTIVE GOLD (Au)
PCB TAILS: SELECTIVE MATTE TIN (Sn)
NICKEL (Ni) OVERALL.
 3. THIS PART CONFORMS TO MOLEX PRODUCT SPECIFICATION PS-74031-999.
 4. FOR MIXED CONTACT LENGTHS - CONSULT MOLEX FOR AVAILABILITY.
 5. FOR SPECIFIC PART NUMBER AND MATING INFORMATION REFER TO SHEET 2.
 6. PACKAGE PER PK-74058-003.
 7. MARK PART NUMBER AND DATE CODE APPROXIMATELY WHERE SHOWN
 8. MAPS (MOLEX ADVANCED PLATING SYSTEM).

THE PRIMARY CARTON WITH A LABEL STATING "ELV AND RoHS COMPLAINT" IS LEAD FREE. CARTONS WITHOUT THIS LABEL MAY CONTAIN LEAD.

LEAD FREE CONVERSION EC NO: UCP2013-0687 DRAWINGS: 2012/08/22 CHKD:MMOLFE 2012/11/27 APPR:SMILLER 2012/12/14	QUALITY SYMBOLS $\nabla = 0$ $\nabla = 0$ $\nabla = 0$	GENERAL TOLERANCES (UNLESS SPECIFIED)		DIMENSION STYLE MM ONLY		SCALE 4:1	DESIGN UNITS METRIC	THIRD ANGLE PROJECTION		
		4 PLACES \pm --- \pm --- 3 PLACES \pm --- \pm --- 2 PLACES \pm --- \pm --- 1 PLACE \pm --- \pm --- 0 PLACE \pm --- \pm ---	mm INCH	DRAWN BY NMARTIN	DATE 2002/09/06	TITLE HSD SALES ASSEMBLY 6 ROW SHIELD END BACKPLANE		DOCUMENT NO. SD-74981-010		SHEET NO. 1 OF 2
		ANGULAR $\pm 1^\circ$		APPROVED BY CBIXLER		DATE 2002/09/06		molex		
		DRAFT WHERE APPLICABLE MUST REMAIN WITHIN DIMENSIONS		SEE SHT.2		THIS DRAWING CONTAINS INFORMATION THAT IS PROPRIETARY TO MOLEX INCORPORATED AND SHOULD NOT BE USED WITHOUT WRITTEN PERMISSION				

PART NUMBER	COLUMN	NUMBER OF SIGNAL PIN	NUMBER OF SHIELD	A	B	M	GOLD THICKNESS MICROMETER	TIN THICKNESS MICROMETER
74981-60*1	10	40	10	27.00	18.00	4.75	0.25 MAPS	0.76-1.52
74981-*0*1							0.76	
74981-*0*6							1.27	
74981-75*1	25	100	25	57.00	48.00	6.25	0.25 MAPS	
74981-*5*1							0.76	
74981-*5*6							1.27	
74981-60*2	10	40	10	27.00	18.00	4.25	0.25 MAPS	
74981-*0*2							0.76	
74981-*0*7							1.27	
74981-75*2	25	100	25	57.00	48.00	5.15	0.25 MAPS	
74981-*5*2							0.76	
74981-*5*7							1.27	
74981-60*3	10	40	10	27.00	18.00	4.25	0.25 MAPS	
74981-*0*3							0.76	
74981-*0*8							1.27	
74981-75*3	25	100	25	57.00	48.00	5.15	0.25 MAPS	
74981-*5*3							0.76	
74981-*5*8							1.27	
74981-60*4	10	40	10	27.00	18.00	4.25	0.25 MAPS	
74981-*0*4							0.76	
74981-*0*9							1.27	
74981-75*4	25	100	25	57.00	48.00	5.15	0.25 MAPS	
74981-*5*4							0.76	
74981-*5*9							1.27	



74981 - * * * *

NUMBER OF COLUMNS/PLATING

- 10 = 10 COLUMN MATTE TIN (FORMERLY TIN/LEAD)
- 25 = 25 COLUMN MATTE TIN (FORMERLY TIN/LEAD)
- 60 = 10 COLUMN MATTE TIN (MAPS)
- 75 = 25 COLUMN MATTE TIN (MAPS)
- 90 = 10 COLUMN MATTE TIN
- 85 = 25 COLUMN MATTE TIN

CONTACT LOAD (PIN HEIGHT)

- 1 & 6 = 4.75
- 2 & 7 = 6.25
- 3 & 8 = 4.25
- 4 & 9 = 5.15

P/N	---0*	---1*	---2*	---3*	---4*	---5*	---6*	---7*	---8*
74981-()	0	A	B	C	D	E	F	G	H
KEYING PIN ORIENTATION									

SEE SHEET 1 EC NO: UCP2013-0687 DRAWINGS 2012/08/22 CHKD:WOLFE 2012/11/27 APPR:SMILLER 2012/12/14 REV DESCRIPTION	QUALITY SYMBOLS	GENERAL TOLERANCES (UNLESS SPECIFIED)	DIMENSION STYLE	SCALE	DESIGN UNITS	THIRD ANGLE PROJECTION
	▽=0	mm INCH	MM ONLY	4:1	METRIC	
	▽=0	4 PLACES ± --- ± ---	DRAWN BY DATE	TITLE		
	▽=0	3 PLACES ± --- ± ---	NMARTIN 2002/09/06	HSD SALES ASSEMBLY		
		2 PLACES ± --- ± ---	CHECKED BY DATE	6 ROW SHIELD END		
		1 PLACE ± --- ± ---	SREED 2002/09/06	BACKPLANE		
		0 PLACE ± --- ± ---	APPROVED BY DATE	molex		
			CBIXLER 2002/09/06	DOCUMENT NO.		
		ANGULAR ± 1°	MATERIAL NO.	SD-74981-010		
		DRAFT WHERE APPLICABLE MUST REMAIN WITHIN DIMENSIONS	SIZE	SHEET NO.		
			SEE TABLE	2 OF 2		
				THIS DRAWING CONTAINS INFORMATION THAT IS PROPRIETARY TO MOLEX INCORPORATED AND SHOULD NOT BE USED WITHOUT WRITTEN PERMISSION		