

DO NOT SCALE FROM THIS PRINT

SMA-J-C-X-ST-BR3

GENDER
-J: JACK

TERMINATION
-BR3: REVERSE POLARITY BULKHEAD (MH081)

TYPE
-C: CABLE

ORIENTATION
-ST: STRAIGHT

PLATING SPECIFICATION
-H: HEAVY GOLD (SEE NOTES 7 & 8)
(SMA-J-C-X-ST-BH3-SHL)
(SMA-INS-016)
(SMA-PIN-006-H)
(SMA-INS-004)
(SMA-LWAS-001-F)
(SMA-NUT-001-F)

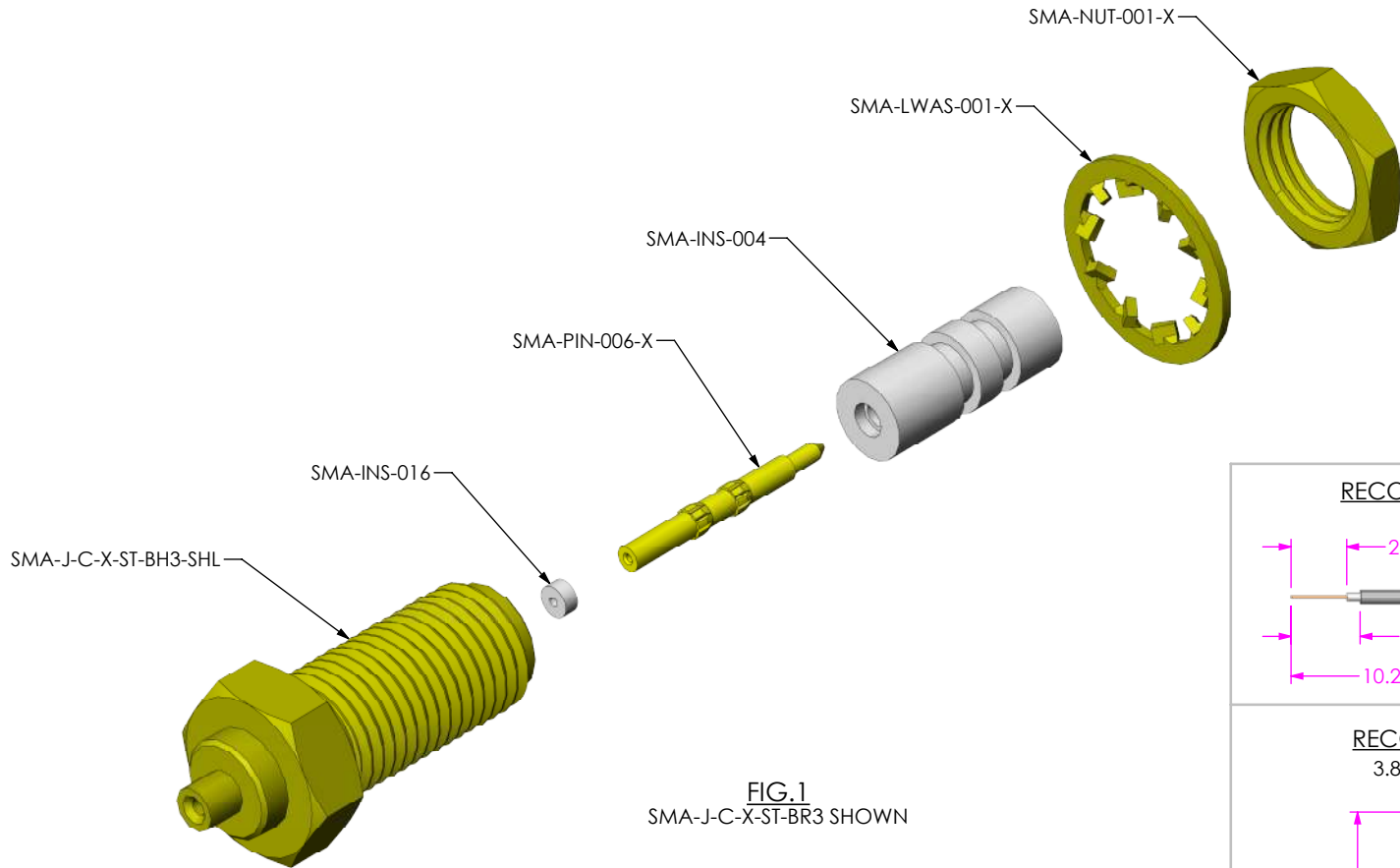
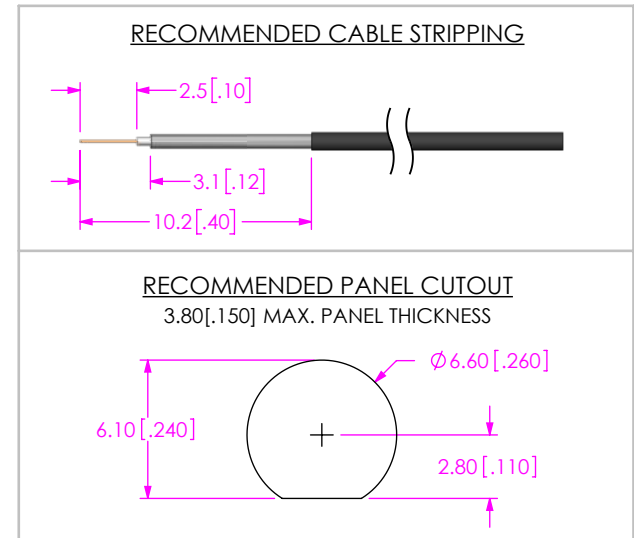


FIG.1
SMA-J-C-X-ST-BR3 SHOWN



NOTES:

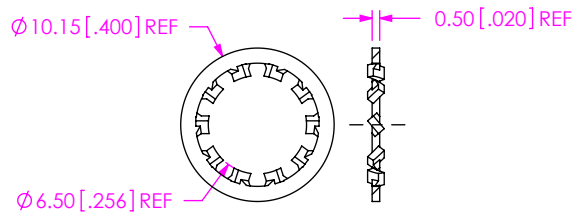
1. REPRESENTS A CRITICAL DIMENSION.
2. CENTER CONTACT PUSHOUT FORCE = 13.35 N [3 LB] MIN.
3. SEE SHEET 3 FOR TERMINATION INFORMATION.
4. NOTE DELETED.
5. PRODUCT TO BE PACKAGED PER PACKAGING STANDARD CO-RF-WI-3040-M.
6. RoHS COMPLIANT.
7. PLATING: -F: .00003" MIN GOLD OVER .000050" MIN NICKEL.
-H: .000030" MIN GOLD OVER .000050" MIN NICKEL.
8. ASSEMBLY PLATING DESIGNATIONS:
-H: (CENTER CONTACT)-H
(OUTER CONTACT) -F
(REMAINING METAL PARTS) -F

| | |
|---|---|
| UNLESS OTHERWISE SPECIFIED, DIMENSIONS ARE IN MILLIMETERS [INCHES]. TOLERANCES ARE: DECIMALS ANGLES .X: ±0.3 [.01] 2° .XX: ±0.13 [.005] .XXX: ±0.051 [.0020] | PROPRIETARY NOTE THIS DOCUMENT CONTAINS CONFIDENTIAL AND PROPRIETARY INFORMATION AND ALL DESIGN, MANUFACTURING, REPRODUCTION, USE, PATENT RIGHTS AND SALES RIGHTS ARE EXPRESSLY RESERVED BY SAMTEC, INC. THIS DOCUMENT SHALL NOT BE DISCLOSED, IN WHOLE OR PART, TO ANY UNAUTHORIZED PERSON OR ENTITY NOR REPRODUCED, TRANSFERRED OR INCORPORATED IN ANY OTHER PROJECT IN ANY MANNER WITHOUT THE EXPRESS WRITTEN CONSENT OF SAMTEC, INC. |
| MATERIAL: DO NOT SCALE DRAWING SHEET SCALE: 3:1 | |
| SHELL, NUT & WASHER: BRASS CONTACT: BRASS DIELECTRIC: PTFE | |

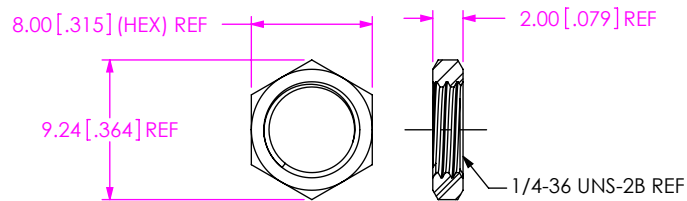


520 PARK EAST BLVD. NEW ALBANY, IN 47150
PHONE: 812-944-6733 FAX: 812-948-5047
e-Mail info@SAMTEC.com code 55322

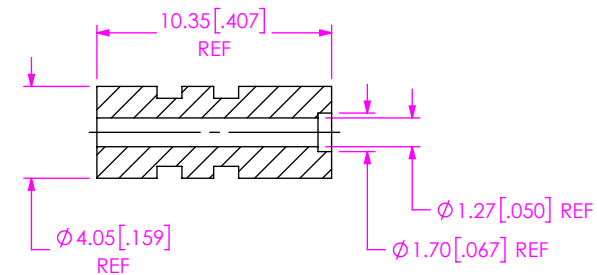
| |
|---|
| DESCRIPTION: SMA STR JACK REV POLARITY BULKHEAD, MH081- 50 OHM |
| DWG. NO. SMA-J-C-X-ST-BR3 |
| BY: R MUSSER 01/28/2008 SHEET 1 OF 3 |



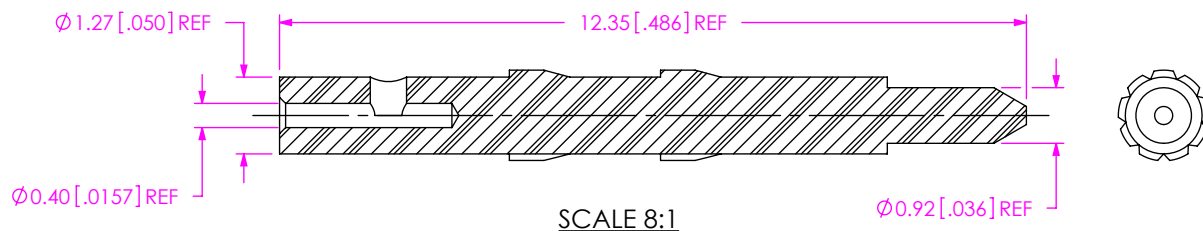
| SAMTEC PART NUMBER | ITEM |
|--------------------|-------------|
| SMA-LWAS-001-X | LOCK WASHER |



| SAMTEC PART NUMBER | ITEM |
|--------------------|---------|
| SMA-NUT-001-X | HEX NUT |

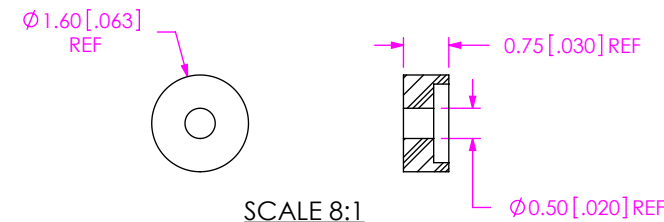


| SAMTEC PART NUMBER | ITEM |
|--------------------|-----------|
| SMA-INS-004 | INSULATOR |



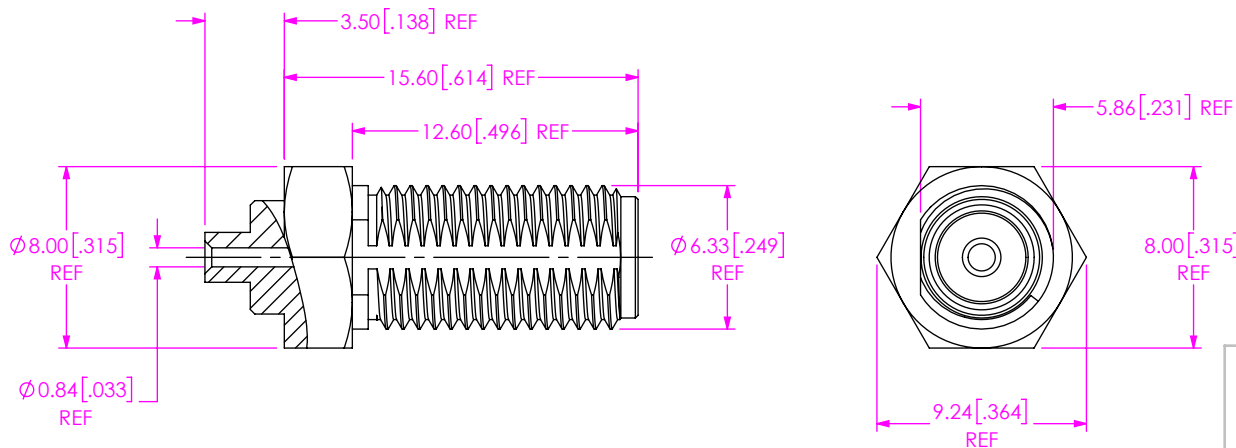
SCALE 8:1

| SAMTEC PART NUMBER | ITEM |
|--------------------|------|
| SMA-PIN-006-X | PIN |



SCALE 8:1

| SAMTEC PART NUMBER | ITEM |
|--------------------|-----------|
| SMA-INS-016 | INSULATOR |



| SAMTEC PART NUMBER | ITEM |
|----------------------|-------|
| SMA-J-C-X-ST-BH3-SHL | SHELL |

F:\DWG\MISC\MKTG\SMA-J-C-X-ST-BR3-MKT.SLDDRW

PROPRIETARY NOTE
 THIS DOCUMENT CONTAINS CONFIDENTIAL AND PROPRIETARY INFORMATION AND ALL DESIGN, MANUFACTURING, REPRODUCTION, USE, PATENT RIGHTS AND SALES RIGHTS ARE EXPRESSLY RESERVED BY SAMTEC, INC. THIS DOCUMENT SHALL NOT BE DISCLOSED, IN WHOLE OR PART, TO ANY UNAUTHORIZED PERSON OR ENTITY NOR REPRODUCED, TRANSFERRED OR INCORPORATED IN ANY OTHER PROJECT IN ANY MANNER WITHOUT THE EXPRESS WRITTEN CONSENT OF SAMTEC, INC.

DO NOT SCALE DRAWING

SHEET SCALE: 2:1

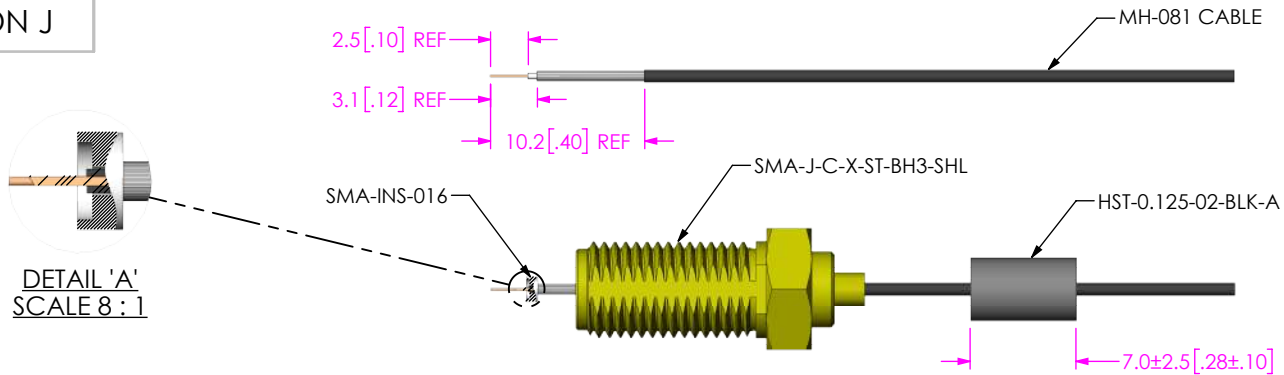


520 PARK EAST BLVD, NEW ALBANY, IN 47150
 PHONE: 812-944-6733 FAX: 812-948-5047
 e-Mail info@SAMTEC.com code 55322

DESCRIPTION:
 SMA STR JACK REV POLARITY BULKHEAD, MH081- 50 OHM

DWG. NO. **SMA-J-C-X-ST-BR3**

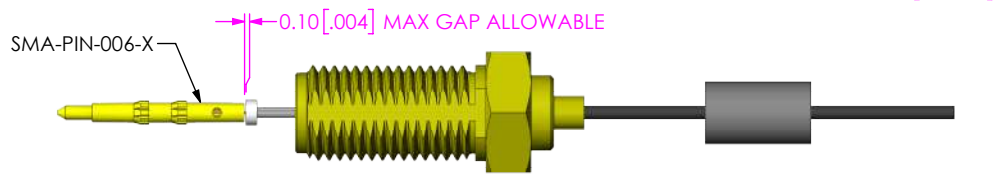
BY: R MUSSER 01/28/2008 SHEET 2 OF 3



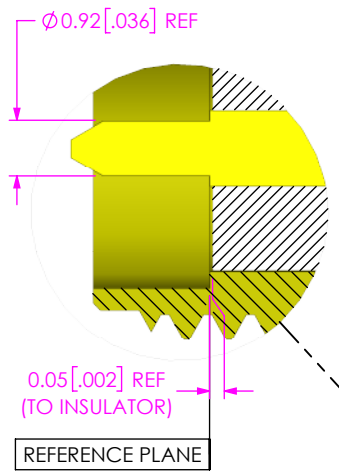
STRIP AND TIN INNER AND OUTER CONDUCTOR

ADD HEAT SHRINK TUBE, SHELL AND INSULATOR

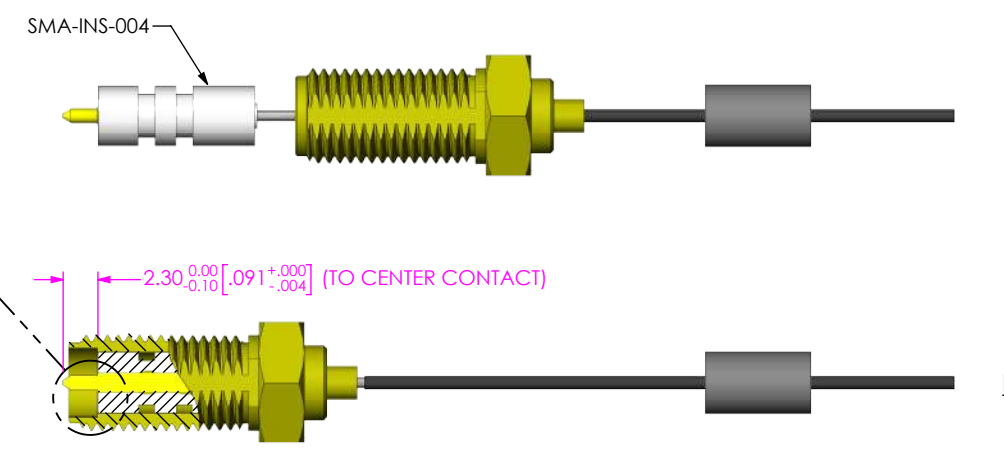
DETAIL 'A'
SCALE 8 : 1



SOLDER SIGNAL SOCKET

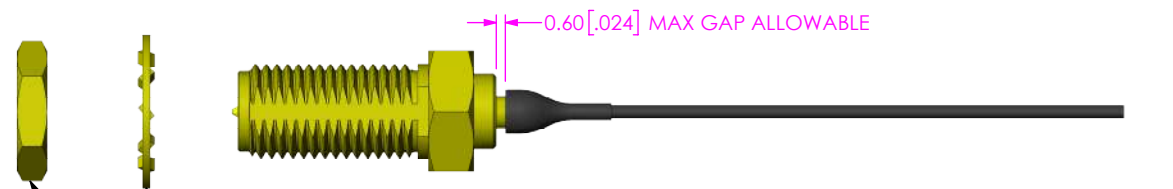


ADD INSULATOR

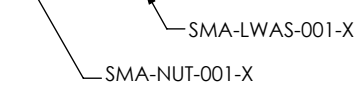


PRESS THE CONTACT/INSULATORS INTO THE SHELL
THEN SOLDER THE SHELL

DETAIL 'B'
SCALE 8 : 1



APPLY HEAT SHRINK TUBING



F:\DWG\MISC\MKTG\SMA-J-C-X-ST-BR3-MKT.SLDDRW

PROPRIETARY NOTE
THIS DOCUMENT CONTAINS CONFIDENTIAL AND PROPRIETARY INFORMATION AND ALL DESIGN, MANUFACTURING, REPRODUCTION, USE, PATENT RIGHTS AND SALES RIGHTS ARE EXPRESSLY RESERVED BY SAMTEC, INC. THIS DOCUMENT SHALL NOT BE DISCLOSED, IN WHOLE OR PART, TO ANY UNAUTHORIZED PERSON OR ENTITY NOR REPRODUCED, TRANSFERRED OR INCORPORATED IN ANY OTHER PROJECT IN ANY MANNER WITHOUT THE EXPRESS WRITTEN CONSENT OF SAMTEC, INC.



520 PARK EAST BLVD, NEW ALBANY, IN 47150
PHONE: 812-944-6733 FAX: 812-948-5047
e-Mail info@SAMTEC.com code 55322

DO NOT SCALE DRAWING

SHEET SCALE: 2:1

DESCRIPTION:
SMA STR JACK REV POLARITY BULKHEAD, MH081- 50 OHM

DWG. NO. SMA-J-C-X-ST-BR3

BY: R MUSSER 01/28/2008 SHEET 3 OF 3