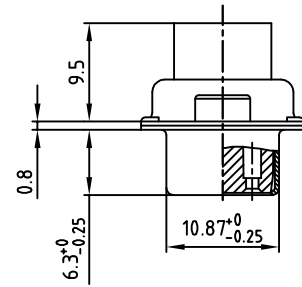
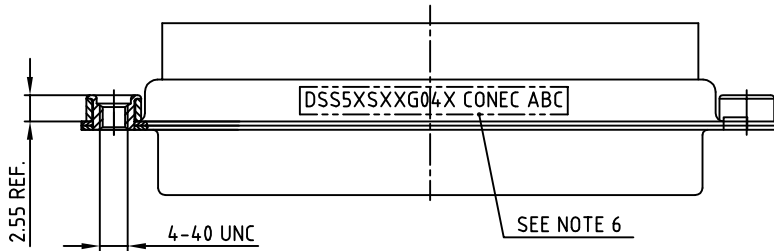
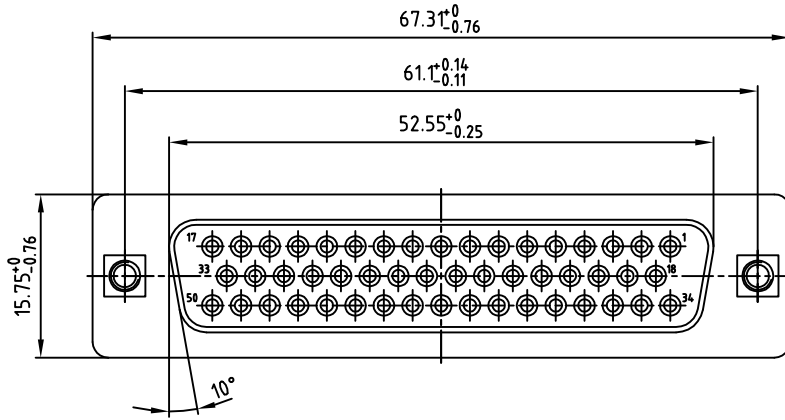


used for: D-SUB



NOTES:

1. METALSHELLS: STEEL; min. 315µm TIN over 40-80µm NICKEL
2. INSULATORS: PBT GF UL 94 V-0, BLACK
3. THREADED INSERTS: COPPER ALLOY; min. 200µm TIN over 80µm NICKEL
4. COLLARS: COPPER ALLOY; min. 200µm TIN over 80µm NICKEL
5. CONNECTOR WILL BE SUPPLIED WITHOUT CONTACTS
6. CONNECTOR IS PART MARKED: **DSS5XSXXG04X CONEC ABC**

Directive 2002/95/EC RoHS compliant

THIS DRAWING MAY NOT BE COPIED OR REPRODUCED IN ANY WAY, AND MAY NOT BE PASSED ON TO A THIRD PARTY, WITHOUT WRITTEN PERMISSION. OWNERSHIP AND COPYRIGHT OF CONEC GmbH DO NOT ALTER CAD DRAWING BY HAND

rev.	description	date	name	tolerance	dim. in mm
2011		date	name		
drawn		14.10.	Henneboel		
appd.		14.10.	Fischer		
norm.					
d-old					
a	Original				



scale:	2:1
material:	SEE NOTES
title:	D-SUB FEMALE 50pos. CRIMP STYLE with threaded insert
dwg no:	16K1A2880
part no:	DSS5XSXXG04X
DIN-A	3
sh:	1/1