

TPS2482 and TPS2483 Evaluation Module

This User's Guide describes the evaluation modules (EVM) for the TPS2482 and TPS2483. The devices are positive voltage, power limiting hot swap controllers with a built in I²C™ current monitor. The TPS2482 operates in a latched fault manner while the TPS2483 operates in an automatic retry manner.

Contents

| | | |
|-----|--|----|
| 1 | Description | 2 |
| 1.1 | Features | 2 |
| 1.2 | Applications | 2 |
| 1.3 | Electrical specifications | 2 |
| 1.4 | Circuit Description | 3 |
| 2 | Schematic | 4 |
| 3 | General Configuration and Description | 5 |
| 3.1 | Physical Access | 5 |
| 4 | Test Setup | 6 |
| 4.1 | 5.1 TPS2482 and TPS2483 EVM GUI Installation | 6 |
| 4.2 | EVM Hook up | 6 |
| 4.3 | TPS2482 TPS2483 EVM GUI Operation | 7 |
| 5 | TPS2482 and TPS2483 EVM Typical Performance Data | 9 |
| 5.1 | TPS2482EVM-001 and TPS2483EVM-002 Power Limit Curves | 9 |
| 6 | EVM Assembly Drawings and Layout Guidelines | 10 |
| 6.1 | PCB Drawings | 10 |
| 6.2 | Layout Guidelines | 14 |
| 7 | Bill of Materials | 15 |

List of Figures

| | | |
|----|---|----|
| 1 | TPS2482 and TPS2483 EVM Schematic..... | 4 |
| 2 | Typical TPS2482 and TPS2483 EVM Test Setup | 6 |
| 3 | TPS2482 and TPS2483 GUI Overview Form | 7 |
| 4 | TPS2482 and TPS2483 GUI Calibrate Form..... | 8 |
| 5 | TPS2482EVM-001 and TPS2483EVM-002 Current and Power Limit Curve | 9 |
| 6 | Top Assembly..... | 10 |
| 7 | Top Layout | 11 |
| 8 | Internal Layer 1 | 12 |
| 9 | Internal Layer 2 | 13 |
| 10 | Bottom Layout..... | 14 |

List of Tables

| | | |
|---|---|----|
| 1 | EVM Electrical and Performance Specifications at 25°C | 2 |
| 2 | Table 2. Connector and Jumper Functionality | 5 |
| 3 | Test Points | 5 |
| 4 | EVM Bill of Materials | 15 |

1 Description

The EVM design allows for several common applications: 12V systems with latched or automatic retry and 24V systems with latched or automatic retry. Both versions feature Texas Instruments new line of high performance power MOSFETs. The EVM also provides a I²C interface for the current monitor when using the TPS2482 and TPS2483 GUI on a PC

1.1 Features

- General TPS2482, TPS2483 Device Features
 - Programmable Current Limiting and Power Limiting for Complete SOA Protection
 - Programmable Fault Timer to Eliminate Nuisance Shutdowns
 - Programmable Undervoltage Lockout
 - Power Good
 - Latched Operation Mode (TPS2482)
 - Automatic Retry Mode (TPS2483)
 - Shunt Monitor GUI
 - USB-I2C and Cable Provided
 - Design Calculator Tools Available: [SLVC033](#) and [SLVC457](#)
- EVM Configurable Options:
 - TPS2482EVM-001 (24V, 325W, Auto Retry)
 - TPS2483EVM-002 (24V, 325W, Latched)
 - High current applications (12V, 40A, 480W, Auto Retry or Latched)

NOTE: The high current version is not orderable. See the high current section for details.

1.2 Applications

- Servers
- Telecom

1.3 Electrical specifications

Table 1. EVM Electrical and Performance Specifications at 25°C

| Characteristic | TPS2482EVM-001 TPS2483EVM-002 | High Current Application |
|---|----------------------------------|--------------------------|
| Maximum input voltage | 40 V | 40 V |
| Input voltage (operating) | 18-27 V | 9-15 V |
| Turn on voltage (max) | 18.5 V | 9 V |
| Turn off voltage (min) | 16 V | 7.9 V |
| Maximum operating current | 13.5 A | 40 A |
| Trip point current | 15-18 A | 45-55 A |
| Circuit operating temperature | -40-50 °C | -40-50°C |
| TPS2482 fault timer trip time (nom) | 752 μs | 528 μs |
| TPS2483 fault timer retry period (nom) | 101 ms | 71 ms |
| Program power limit, $V_{prog} / (2 \times R2)$ | 188 W | 203 W |

1.4 Circuit Description

See [Figure 1](#) for the following circuit operation description. DC input voltage is applied between J1 and J3 with managed load output voltage being furnished between J2 and J4. TPS2482 and TPS2483 switches input to output by controlling Q1 and Q2. Load current through R2 is measured by both the current monitor and hotswap within TPS2482 and TPS2483. I²C interface to the current monitor is provided at J8 and address selection is provided by J5 and J6.

R6 and R7 are provided for scaling the current trip point to allow use of standard R2 values when non-standard current trip points are required. R8, R9, and C5 are provided if current monitor filtering are required in noisy circuit applications. R13 and C6 are provided when the application requires a linear turn on characteristic.

The 12V, 40A, high current application shown in [Table 1](#) can be achieved with the following BOM changes: Install shunt on J7 for 9V UVLO, change Q1 and Q2 to CSD16401Q5, change R2 to 0.001Ω, change R19 to 17.8k, and change C10 to 3.3nF.

2 Schematic

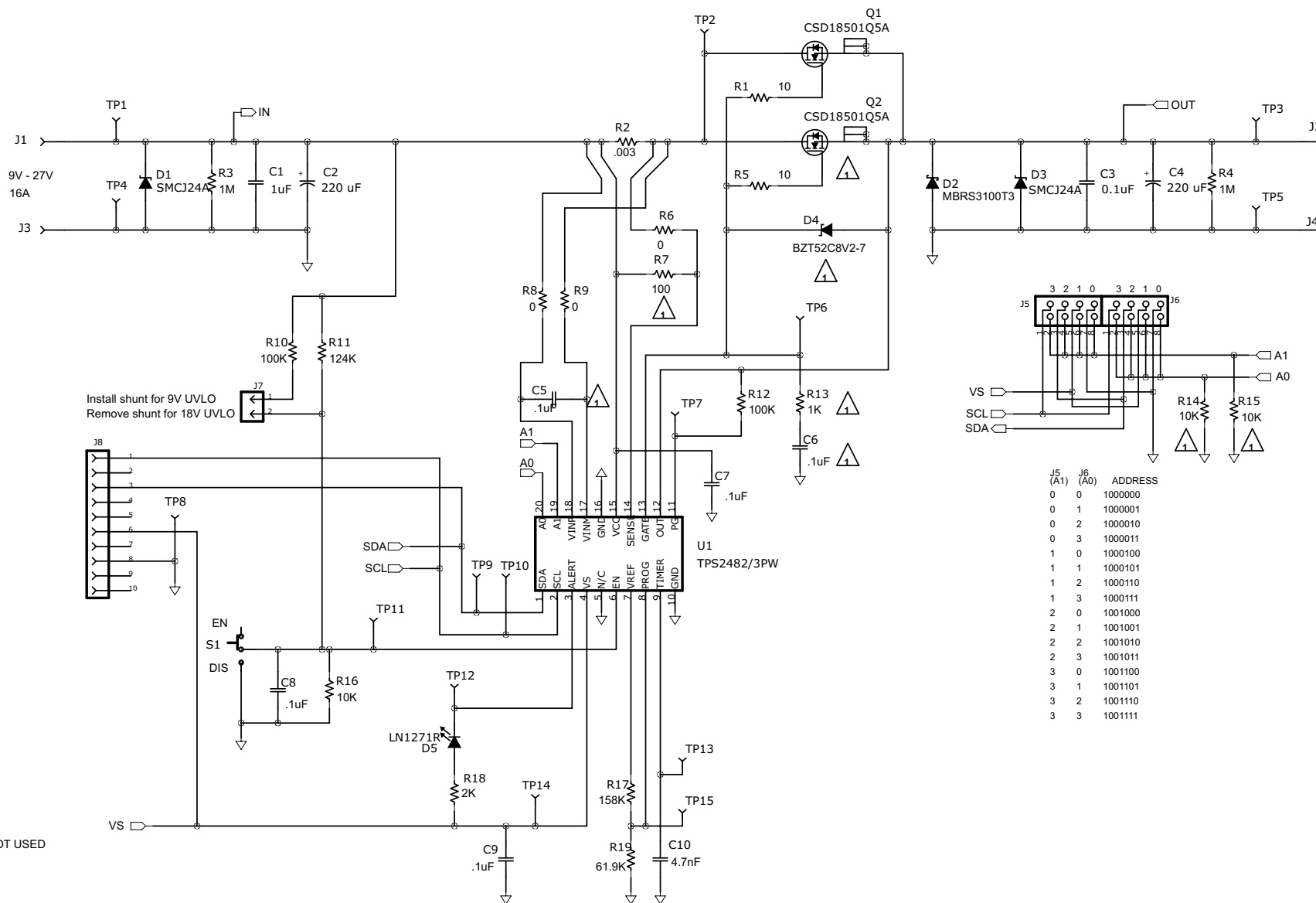


Figure 1. TPS2482 and TPS2483 EVM Schematic

3 General Configuration and Description

3.1 Physical Access

Table 2 lists the TPS2482 and TPS2483 EVM connector functionality, and Table 3 describes the test point availability.

Table 2. Table 2. Connector and Jumper Functionality

| Connector | Label | Description |
|-----------|------------|---|
| J1, J3 | +IN, -IN | Power bus input (high current screw down lugs). J1 is +IN and J3 is -IN. |
| J2, J4 | +OUT, -OUT | Switched bus output (high current screw down lugs). J2 is +OUT and J4 is -OUT. |
| J8 | USB | USB Port. Connect furnished SM-USB-DIG and cable to PC when using the TPS2482/3 GUI (see Figure 2). |
| J5 | A1 | Allows selection of the A1 I ² C address bit. The EVM default is set to address 1000000. For other address options, see the table in Figure 1. |
| J6 | A0 | Allows selection of the A0 I ² C address bit. The EVM default is set to address 1000000. For other address options, see the table in Figure 1. |
| J7 | UVLO | Sets the input voltage turn on point. Install a shunt on J7 for 9V UVLO and remove the shunt for 18V UVLO. |
| S1 | EN | Selecting the S1 EN position allows the TPS2482 and TPS2483 to enable the MOSFET if the power bus input is above the turn on voltage. Setting S1 away from the EN position disables the MOSFET. |
| D5 (RED) | ALERT | Current monitor ALERT status. |

Table 3. Test Points

| Test Point | Color | Label | Description |
|------------|-------|-------|--|
| TP1 | RED | +IN | Power bus input high. |
| TP4 | BLK | -IN | Power bus input low. |
| TP3 | ORG | +OUT | Switched bus output high. |
| TP5 | BLK | -OUT | Switched bus output low. |
| TP2 | WHT | SNS | SNS pin test point. |
| TP6 | WHT | GATE | GATE pin test point. |
| TP7 | WHT | PG | PG pin (power good) test point. |
| TP13 | WHT | TMR | TMR pin (timer) test point. |
| TP15 | WHT | PRG | PROG pin (power program) test point. |
| TP11 | WHT | EN | EN pin (enable) test point. |
| TP10 | WHT | SCL | SCL pin (serial clock) test point. |
| TP9 | WHT | SDA | SDA pin (serial data) test point. |
| TP14 | RED | VS | VS pin (current monitor supply voltage) test point. The USB source applied at J8 powers the current monitor. |
| TP8 | BLK | GND | GND pin (current monitor ground) test point. The USB source applied at J8 powers the current monitor. |
| TP12 | WHT | ALERT | Current monitor ALERT pin. |

4 Test Setup

4.1 5.1 TPS2482 and TPS2483 EVM GUI Installation

- Download the TPS2482 and TPS2483 INSTALLER.ZIP (SLVC454) file from the product page for the devices on www.ti.com.
- Place the TPS2482 and TPS2483 INSTALLER.ZIP file in a known location on the PC. Unzip the TPS2482-3 INSTALLER.ZIP file.
- Double click the unzipped setup.exe file which is located in the TPS2482 and TPS2483 Installer\Volume subdirectory. Proceed through the installation by accepting the prompts.
- Once the GUI completes the installation, the user is prompted to restart the computer.

Figure 2 shows a typical test setup for TPS2482 and TPS2483EVM.

4.2 EVM Hook up

Figure 2 shows a typical test setup for TPS2482 and TPS2483 EVM. Input voltage can be applied as described in Table 2.

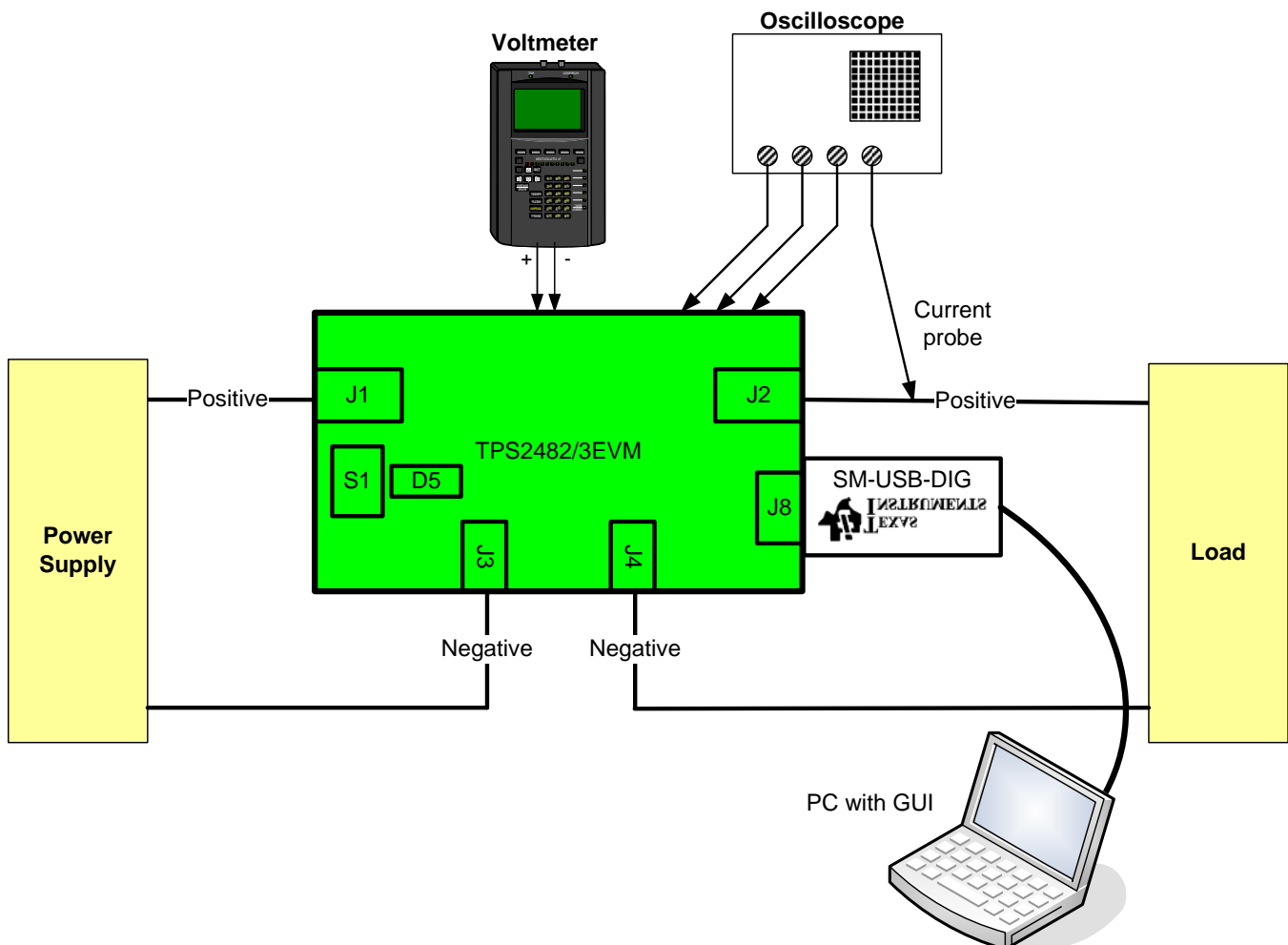


Figure 2. Typical TPS2482 and TPS2483 EVM Test Setup

- Connect the PC to the UUT J8 using the SM-USB-DIG and Type A Male to Type A Female USB v2.0 extension cable. Orient the SM-USB-DIG so that the TI bug is oriented as shown in Figure 2.
- Turn on the input power supply and enable the TPS2482 and TPS2483 EVM using S1. Apply a known load to the circuit.

4.3 TPS2482 TPS2483 EVM GUI Operation

- Navigate to the TPS2482 and TPS2483 shortcut and start the GUI (see [Figure 3](#)).

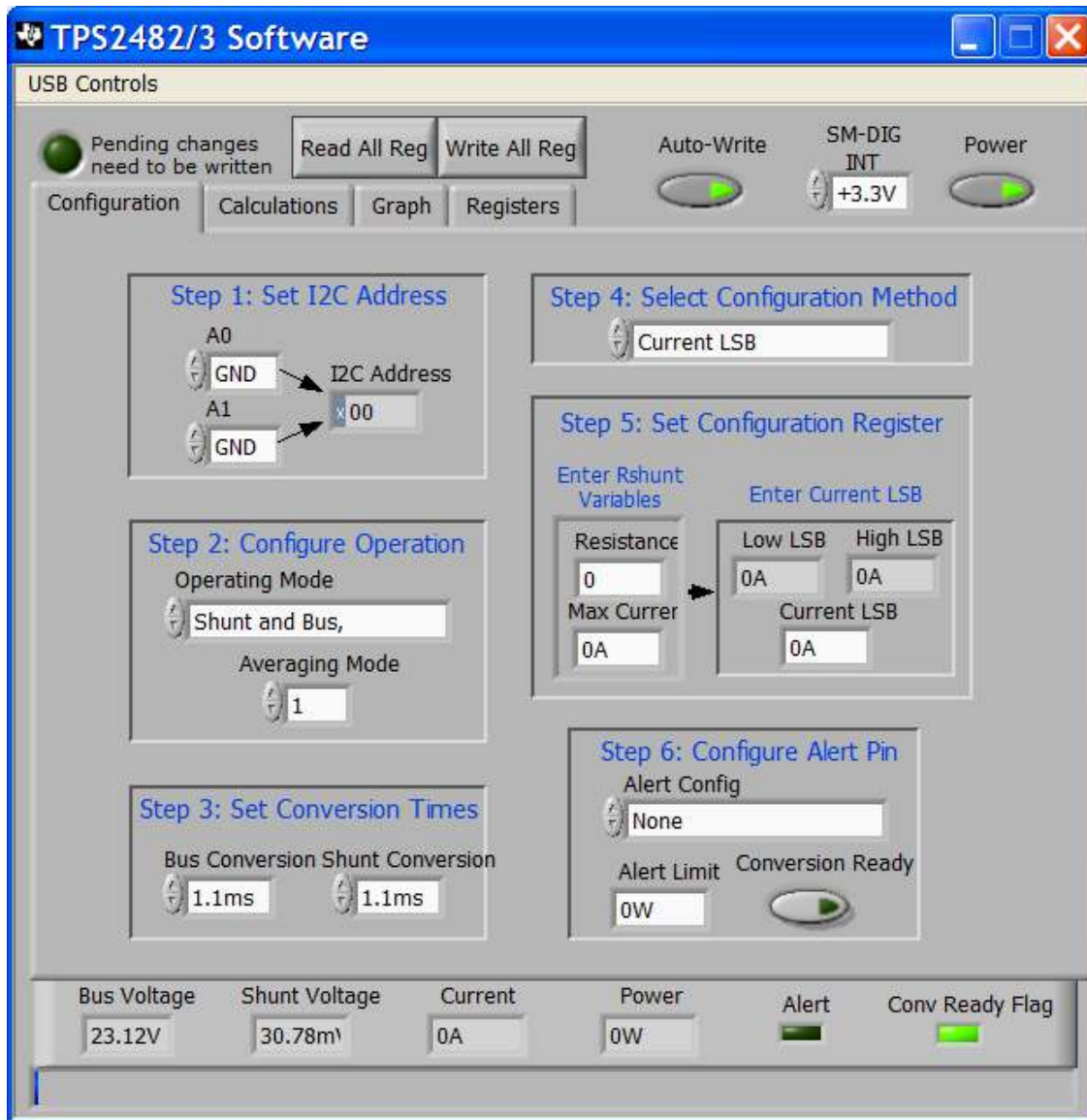


Figure 3. TPS2482 and TPS2483 GUI Overview Form

- Type a value of 0.003 into the Resistance text box
- Type a value of 20 into the Max Current text box.
- Type a value of 0.001 into the Current LSB text box.
- Press the Write All Reg button and then the Read All Reg at the top of the GUI form.
- Verify the GUI Vbus voltage and current are as expected per the EVM loading and power supply.
- In the Configure Alert Pin field, click the Alert Config Up/Down arrow until the appropriate alert pin status is active as shown in [Figure 4](#). In the Alert Limit box, enter the appropriate value and press the PC enter key. Verify that the ALERT LED (D5) on the EVM is ON or OFF as appropriate.

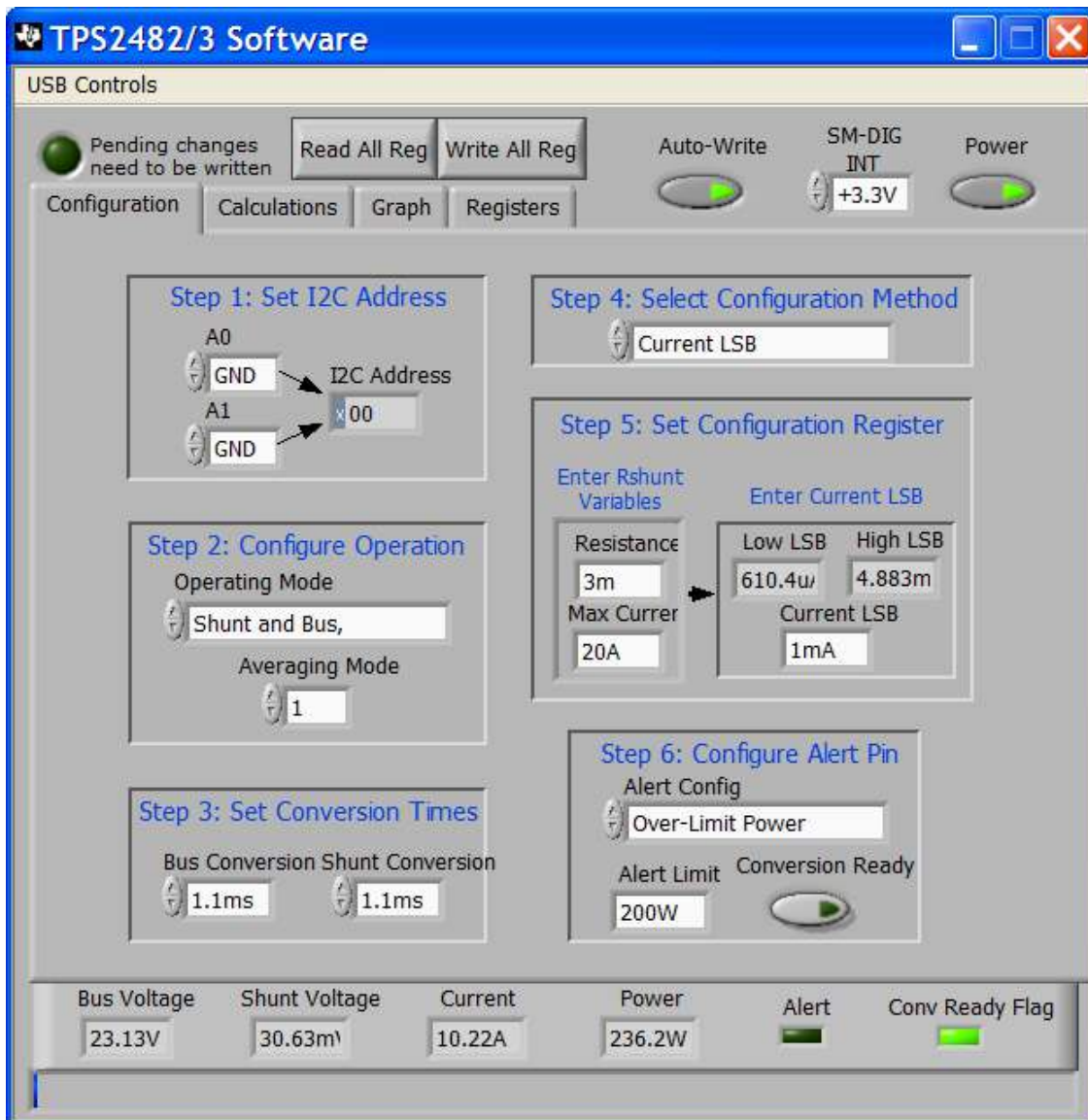


Figure 4. TPS2482 and TPS2483 GUI Calibrate Form

5 TPS2482 and TPS2483 EVM Typical Performance Data

5.1 TPS2482EVM-001 and TPS2483EVM-002 Power Limit Curves

Figure 5 illustrates the current limit vs output voltage curve for TPS2482EVM-001 and TPS2483EVM-002.

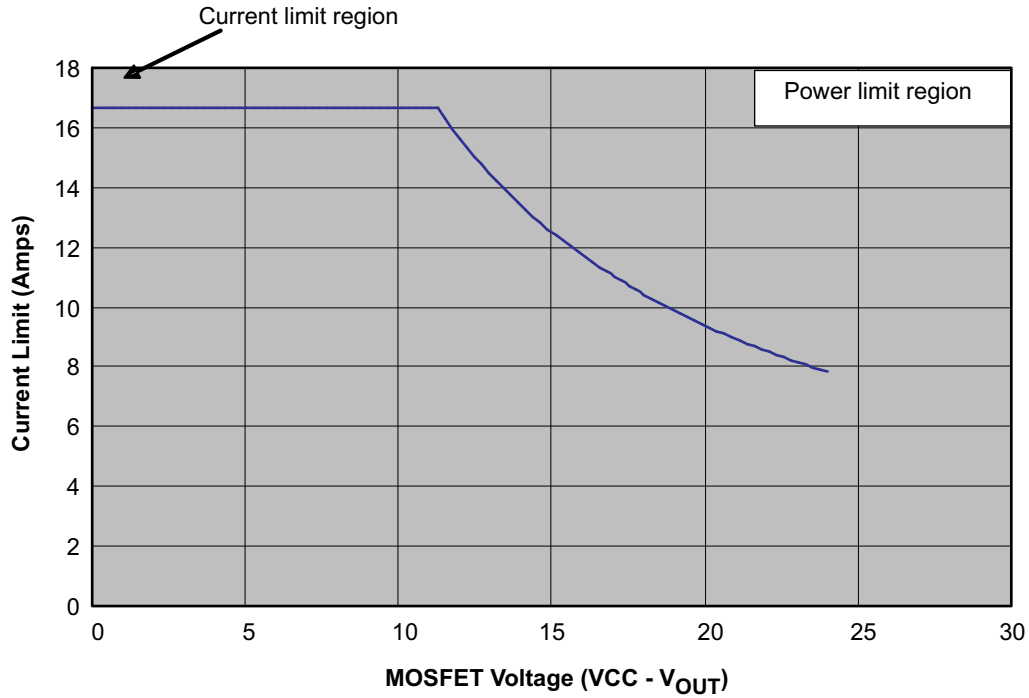


Figure 5. TPS2482EVM-001 and TPS2483EVM-002 Current and Power Limit Curve

6 EVM Assembly Drawings and Layout Guidelines

6.1 PCB Drawings

The [Figure 6](#) through [Figure 8](#) show component placement and layout of the EVM.

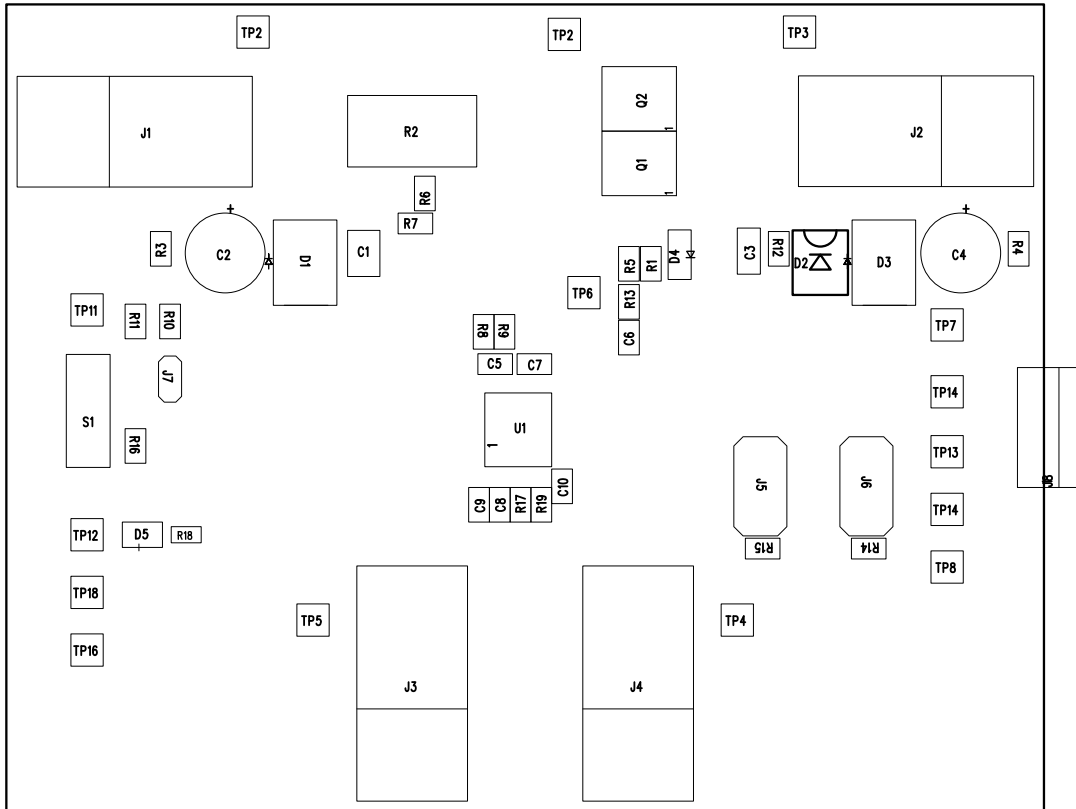


Figure 6. Top Assembly

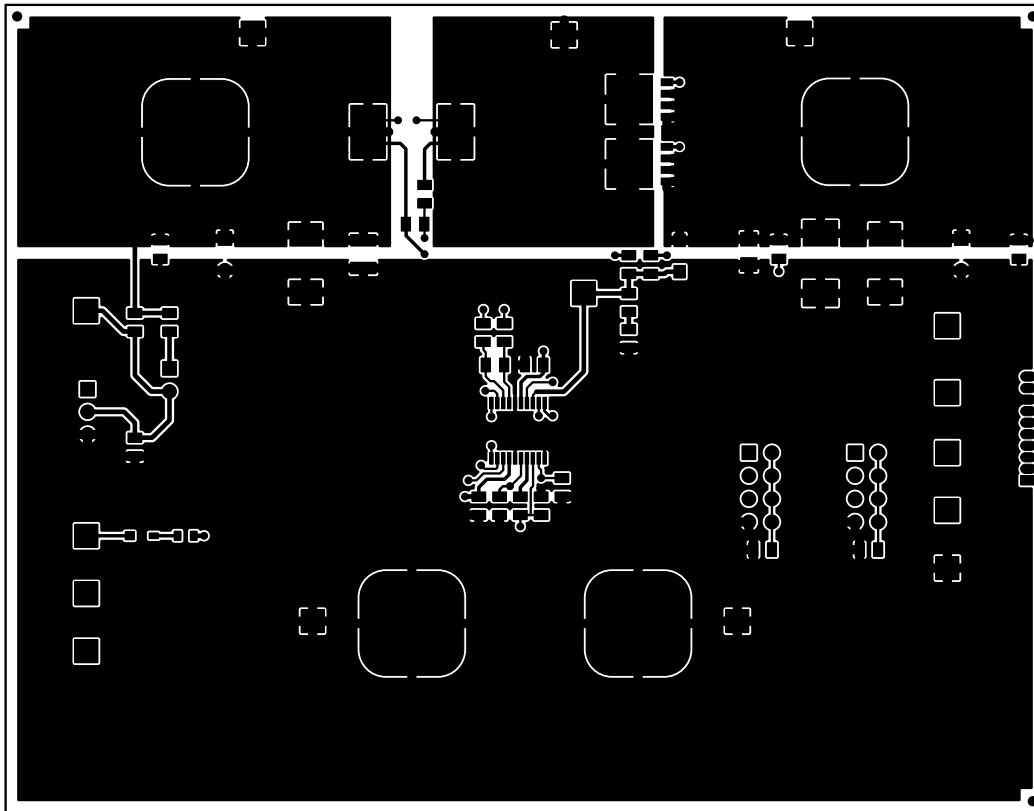


Figure 7. Top Layout

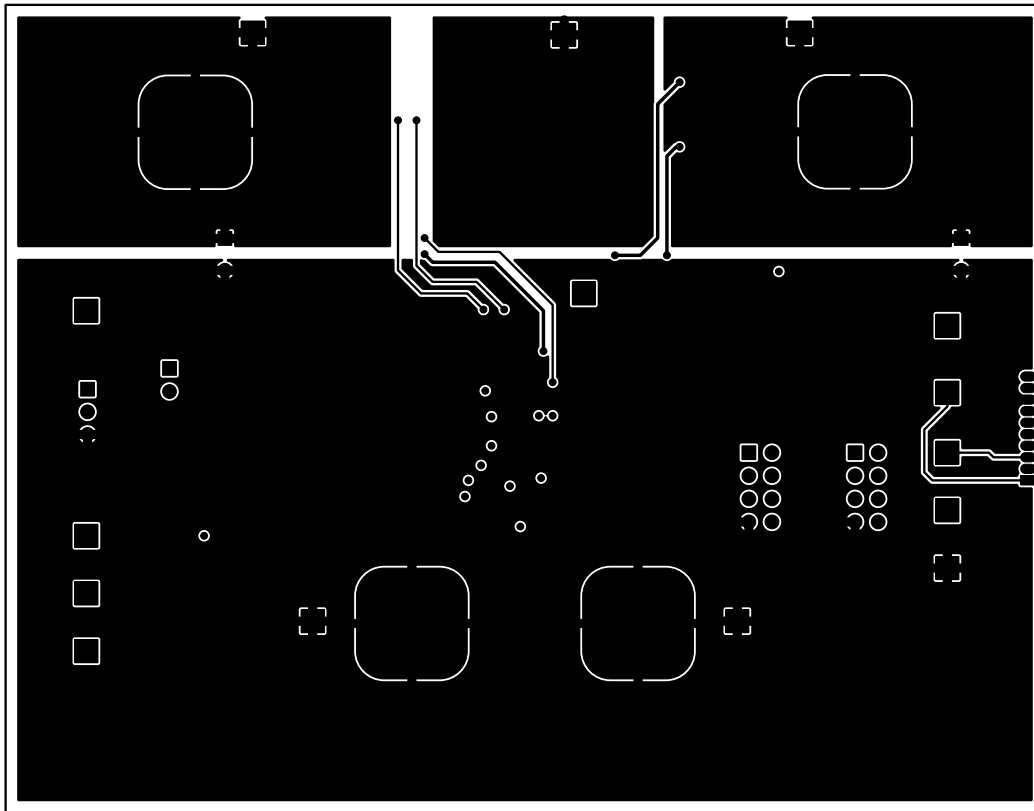


Figure 8. Internal Layer 1

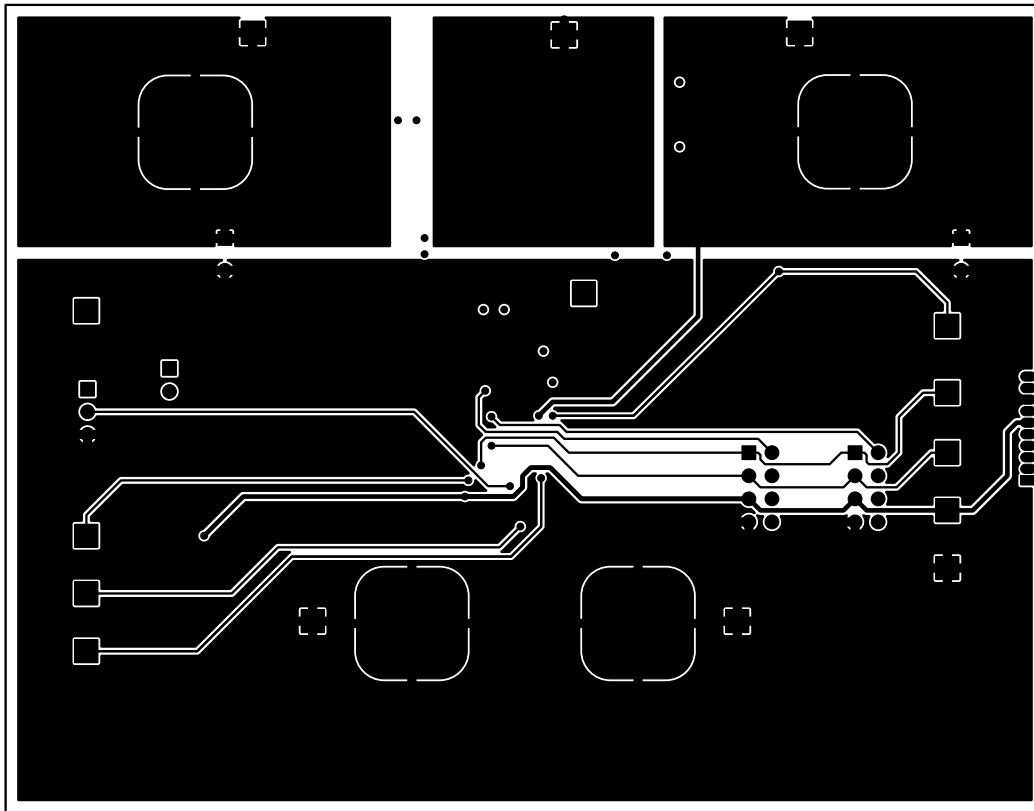


Figure 9. Internal Layer 2

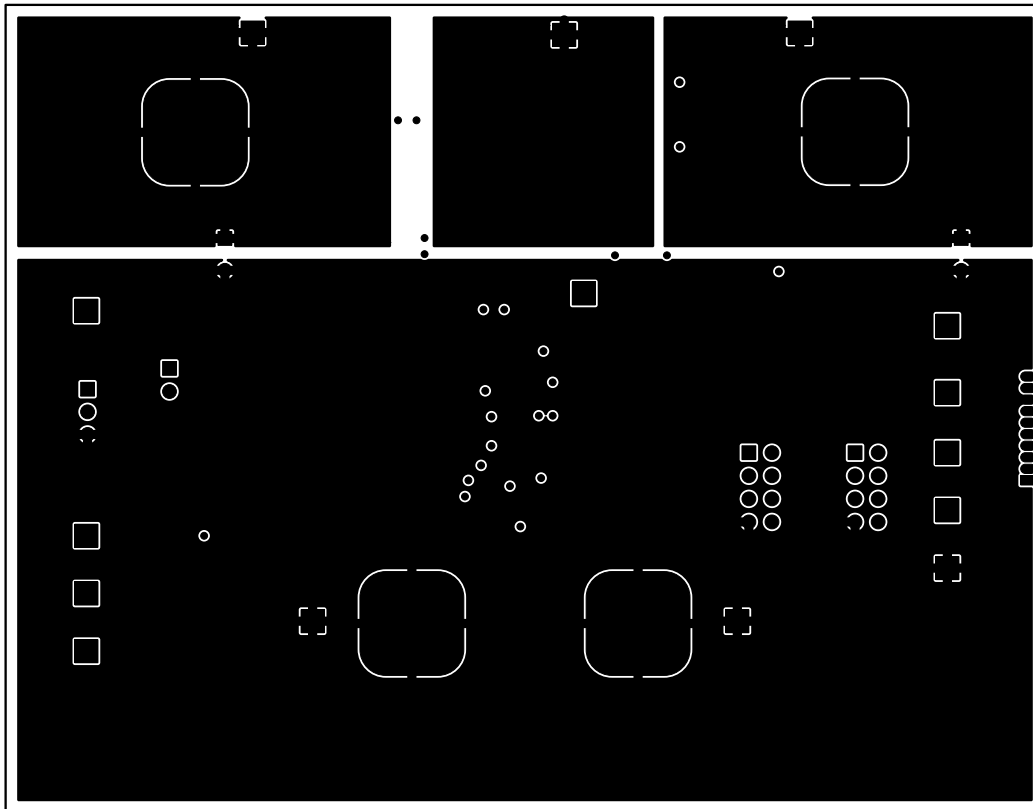


Figure 10. Bottom Layout

6.2 **Layout Guidelines**

The TPS2482 and TPS2483 circuit layout should follow power and EMI, ESD best practice guidelines. A basic set of recommendations include:

- Arrange the power devices so power flows in a sequential, linear fashion.
- The TPS2482 and TPS2483 should be placed close to the sense resistor and MOSFET using a Kelvin type connection to achieve accurate current sensing.
- A low-impedance GND connection is required because the TPS2482 and TPS2483 can momentarily sink upwards of 100 mA from the gate of the MOSFET. The GATE amplifier has high bandwidth while active, so keep the GATE trace length short.
- Large copper fills and traces should be used on SMT power-dissipating devices, and wide traces or overlay copper fills should be used in the power path.
- The PROG, TIMER, and EN pins have high input impedances; therefore, their input lead length should be minimized.
- Oversize power traces and power device connections assuring low voltage drop and good thermal performance.

7 Bill of Materials

Table 4. EVM Bill of Materials

| COUNT | RefDes | Value | Description | Size | Part Number | Mfr |
|-------|----------|----------------------|---|--------------------|----------------------|-------------|
| 1 | C1 | 1uF | Capacitor, Ceramic, 100V, X7R, 10% | 1210 | Std | Std |
| 1 | C10 | 4.7nF | Capacitor, Ceramic, 100V, X7R, 10% | 805 | Std | Std |
| 2 | C2 C4 | 220 uF | Capacitor, Alum Electrolytic 35 V, ±20% | 8.00 mm Dia | ECA-1VM221 | Panasonic |
| 1 | C3 | 0.1uF | Capacitor, Ceramic, 100-V, X7R, 10% | 1206 | Std | Std |
| 4 | C6-9 | .1uF | Capacitor, Ceramic, 100V, X7R, 10% | 805 | Std | Std |
| 0 | C5 | .1uF | Capacitor, Ceramic, 100V, X7R, 10% | 805 | Std | Std |
| 2 | D1 D3 | SMCJ24A | Diode, [Uni-]Directional TVS, 1500W, 24-V | SMC | SMCJ24A | Littlefuse |
| 1 | D2 | MBRS3100T3 | Diode, Schottky 3-A 100-V | SMC | MBRS3100T3G | On Semi |
| 0 | D4 | BZT52C8V2-7 | Diode, Zener, Planar Power, 500mW, 8.2V | SOD-123 | BZT52C8V2-7-F | Diodes |
| 1 | D5 | LN1271R | Diode, LED, Red, 10-mA, 0.4-mcd | 0.114 X 0.049 inch | LN1271RTR | Panasonic |
| 4 | J1-4 | CX35-36-CY | Lug, Copper, 35A, | 0.380 x 1.020 inch | CX35-36-CY | Panduit |
| 2 | J5-6 | PEC04DAAN | Header, Male 2x4-pin, 100mil spacing | 0.20 x 0.40 inch | PEC04DAAN | Sullins |
| 1 | J7 | PEC02SAAN | Header, Male 2-pin, 100mil spacing | 0.100 inch x 2 | PEC02SAAN | Sullins |
| 1 | J8 | 851-43-010-20-001000 | Connector, 10 pin RA, 50 mil spacing, 3A | 0.220 x 0.230 inch | 851-43-010-20-001000 | Mill-Max |
| 1 | Q1 | CSD18501Q5A | MOSFET, N-Chan, 40V, 25 A, 3.3 mOhm | QFN-8 POWER | CSD18501Q5A | TI |
| 0 | Q2 | CSD18501Q5A | MOSFET, N-Chan, 40V, 25 A, 3.3 mOhm | QFN-8 POWER | CSD18501Q5A | TI |
| 2 | R1 R5 | 10 | Resistor, Chip, 1/10W, 1% | 805 | Std | Std |
| 2 | R10 R12 | 100K | Resistor, Chip, 1/10W, 1% | 805 | Std | Std |
| 1 | R11 | 124K | Resistor, Chip, 1/10W, 1% | 805 | Std | Std |
| 0 | R13 | 1K | Resistor, Chip, 1/10W, 1% | 805 | Std | Std |
| 0 | R14 R15 | 10K | Resistor, Chip, 1/10W, 1% | 806 | Std | Std |
| 1 | R16 | 10K | Resistor, Chip, 1/10W, 1% | 805 | Std | Std |
| 1 | R17 | 158K | Resistor, Chip, 1/10W, 1% | 805 | Std | Std |
| 1 | R18 | 2K | Resistor, Chip, 1/16W, 1% | 603 | STD | Std |
| 1 | R19 | 61.9K | Resistor, Chip, 1/10W, 1% | 805 | Std | Std |
| 1 | R2 | 0.003 | Res, Power Metal Strip, 5W, ±1% | 4527 | WSR53L000FEA | Vishay Dale |
| 2 | R3-4 | 1M | Resistor, Chip, 1/10W, 1% | 805 | Std | Std |
| 3 | R6 R8-9 | 0 | Resistor, Chip, 1/10W, 5% | 805 | Std | Std |
| 0 | R7 | 100 | Resistor, Chip, 1/10W, 5% | 805 | Std | Std |
| 1 | S1 | EG1218 | Switch, SPDT, Slide, PC-mount, | 0.457 x 0.157 inch | EG1218 | E_Switch |
| 2 | TP1 TP14 | 5010 | Test Point, Red, Thru Hole | 0.125 x 0.125 inch | 5010 | Keystone |

Table 4. EVM Bill of Materials (continued)

| COUNT | RefDes | Value | Description | Size | Part Number | Mfr |
|-------|--------------------------|---------------------------|--|--------------------|------------------------|----------|
| 9 | TP2 TP6-7 TP9-13 TP15 | 5012 | Test Point, White, Thru Hole | 0.125 x 0.125 inch | 5012 | Keystone |
| 1 | TP3 | 5013 | Test Point, Orange, Thru Hole | 0.125 x 0.125 inch | 5013 | Keystone |
| 3 | TP4-5 TP8 | 5011 | Test Point, Black, Thru Hole | 0.125 x 0.125 inch | 5011 | Keystone |
| 1 | U1 | TPS2483PW or TPS2482PW | IC, 36-V Hotswap Controller with Digital Power Monitoring (Retry for TPS2483, Latched for TPS2482) | TSSOP | TPS2483PW or TPS2482PW | TI |
| 3 | See Note 5 | | Shunt, Black | 100-mil | 929950-00 | 3M |
| 4 | | SJ-5003 | BUMPON HEMISPHERE .44X.20 BLACK | | SJ-5003 | 3M |
| 1 | — | | PCB, 3.5 ln x 1.7 ln x 0.062 ln | | PWR157 | Any |

EVALUATION BOARD/KIT/MODULE (EVM) ADDITIONAL TERMS

Texas Instruments (TI) provides the enclosed Evaluation Board/Kit/Module (EVM) under the following conditions:

The user assumes all responsibility and liability for proper and safe handling of the goods. Further, the user indemnifies TI from all claims arising from the handling or use of the goods.

Should this evaluation board/kit not meet the specifications indicated in the User's Guide, the board/kit may be returned within 30 days from the date of delivery for a full refund. THE FOREGOING LIMITED WARRANTY IS THE EXCLUSIVE WARRANTY MADE BY SELLER TO BUYER AND IS IN LIEU OF ALL OTHER WARRANTIES, EXPRESSED, IMPLIED, OR STATUTORY, INCLUDING ANY WARRANTY OF MERCHANTABILITY OR FITNESS FOR ANY PARTICULAR PURPOSE. EXCEPT TO THE EXTENT OF THE INDEMNITY SET FORTH ABOVE, NEITHER PARTY SHALL BE LIABLE TO THE OTHER FOR ANY INDIRECT, SPECIAL, INCIDENTAL, OR CONSEQUENTIAL DAMAGES.

Please read the User's Guide and, specifically, the Warnings and Restrictions notice in the User's Guide prior to handling the product. This notice contains important safety information about temperatures and voltages. For additional information on TI's environmental and/or safety programs, please visit www.ti.com/esh or contact TI.

No license is granted under any patent right or other intellectual property right of TI covering or relating to any machine, process, or combination in which such TI products or services might be or are used. TI currently deals with a variety of customers for products, and therefore our arrangement with the user is not exclusive. TI assumes no liability for applications assistance, customer product design, software performance, or infringement of patents or services described herein.

REGULATORY COMPLIANCE INFORMATION

As noted in the EVM User's Guide and/or EVM itself, this EVM and/or accompanying hardware may or may not be subject to the Federal Communications Commission (FCC) and Industry Canada (IC) rules.

For EVMs **not** subject to the above rules, this evaluation board/kit/module is intended for use for ENGINEERING DEVELOPMENT, DEMONSTRATION OR EVALUATION PURPOSES ONLY and is not considered by TI to be a finished end product fit for general consumer use. It generates, uses, and can radiate radio frequency energy and has not been tested for compliance with the limits of computing devices pursuant to part 15 of FCC or ICES-003 rules, which are designed to provide reasonable protection against radio frequency interference. Operation of the equipment may cause interference with radio communications, in which case the user at his own expense will be required to take whatever measures may be required to correct this interference.

General Statement for EVMs including a radio

User Power/Frequency Use Obligations: This radio is intended for development/professional use only in legally allocated frequency and power limits. Any use of radio frequencies and/or power availability of this EVM and its development application(s) must comply with local laws governing radio spectrum allocation and power limits for this evaluation module. It is the user's sole responsibility to only operate this radio in legally acceptable frequency space and within legally mandated power limitations. Any exceptions to this are strictly prohibited and unauthorized by Texas Instruments unless user has obtained appropriate experimental/development licenses from local regulatory authorities, which is responsibility of user including its acceptable authorization.

For EVMs annotated as FCC – FEDERAL COMMUNICATIONS COMMISSION Part 15 Compliant

Caution

This device complies with part 15 of the FCC Rules. Operation is subject to the following two conditions: (1) This device may not cause harmful interference, and (2) this device must accept any interference received, including interference that may cause undesired operation.

Changes or modifications not expressly approved by the party responsible for compliance could void the user's authority to operate the equipment.

FCC Interference Statement for Class A EVM devices

This equipment has been tested and found to comply with the limits for a Class A digital device, pursuant to part 15 of the FCC Rules. These limits are designed to provide reasonable protection against harmful interference when the equipment is operated in a commercial environment. This equipment generates, uses, and can radiate radio frequency energy and, if not installed and used in accordance with the instruction manual, may cause harmful interference to radio communications. Operation of this equipment in a residential area is likely to cause harmful interference in which case the user will be required to correct the interference at his own expense.

FCC Interference Statement for Class B EVM devices

This equipment has been tested and found to comply with the limits for a Class B digital device, pursuant to part 15 of the FCC Rules. These limits are designed to provide reasonable protection against harmful interference in a residential installation. This equipment generates, uses and can radiate radio frequency energy and, if not installed and used in accordance with the instructions, may cause harmful interference to radio communications. However, there is no guarantee that interference will not occur in a particular installation. If this equipment does cause harmful interference to radio or television reception, which can be determined by turning the equipment off and on, the user is encouraged to try to correct the interference by one or more of the following measures:

- Reorient or relocate the receiving antenna.
- Increase the separation between the equipment and receiver.
- Connect the equipment into an outlet on a circuit different from that to which the receiver is connected.
- Consult the dealer or an experienced radio/TV technician for help.

For EVMs annotated as IC – INDUSTRY CANADA Compliant

This Class A or B digital apparatus complies with Canadian ICES-003.

Changes or modifications not expressly approved by the party responsible for compliance could void the user's authority to operate the equipment.

Concerning EVMs including radio transmitters

This device complies with Industry Canada licence-exempt RSS standard(s). Operation is subject to the following two conditions: (1) this device may not cause interference, and (2) this device must accept any interference, including interference that may cause undesired operation of the device.

Concerning EVMs including detachable antennas

Under Industry Canada regulations, this radio transmitter may only operate using an antenna of a type and maximum (or lesser) gain approved for the transmitter by Industry Canada. To reduce potential radio interference to other users, the antenna type and its gain should be so chosen that the equivalent isotropically radiated power (e.i.r.p.) is not more than that necessary for successful communication.

This radio transmitter has been approved by Industry Canada to operate with the antenna types listed in the user guide with the maximum permissible gain and required antenna impedance for each antenna type indicated. Antenna types not included in this list, having a gain greater than the maximum gain indicated for that type, are strictly prohibited for use with this device.

Cet appareil numérique de la classe A ou B est conforme à la norme NMB-003 du Canada.

Les changements ou les modifications pas expressément approuvés par la partie responsable de la conformité ont pu vider l'autorité de l'utilisateur pour actionner l'équipement.

Concernant les EVMs avec appareils radio

Le présent appareil est conforme aux CNR d'Industrie Canada applicables aux appareils radio exempts de licence. L'exploitation est autorisée aux deux conditions suivantes : (1) l'appareil ne doit pas produire de brouillage, et (2) l'utilisateur de l'appareil doit accepter tout brouillage radioélectrique subi, même si le brouillage est susceptible d'en compromettre le fonctionnement.

Concernant les EVMs avec antennes détachables

Conformément à la réglementation d'Industrie Canada, le présent émetteur radio peut fonctionner avec une antenne d'un type et d'un gain maximal (ou inférieur) approuvé pour l'émetteur par Industrie Canada. Dans le but de réduire les risques de brouillage radioélectrique à l'intention des autres utilisateurs, il faut choisir le type d'antenne et son gain de sorte que la puissance isotrope rayonnée équivalente (p.i.r.e.) ne dépasse pas l'intensité nécessaire à l'établissement d'une communication satisfaisante.

Le présent émetteur radio a été approuvé par Industrie Canada pour fonctionner avec les types d'antenne énumérés dans le manuel d'usage et ayant un gain admissible maximal et l'impédance requise pour chaque type d'antenne. Les types d'antenne non inclus dans cette liste, ou dont le gain est supérieur au gain maximal indiqué, sont strictement interdits pour l'exploitation de l'émetteur.

【Important Notice for Users of this Product in Japan】

This development kit is NOT certified as Confirming to Technical Regulations of Radio Law of Japan

If you use this product in Japan, you are required by Radio Law of Japan to follow the instructions below with respect to this product:

1. Use this product in a shielded room or any other test facility as defined in the notification #173 issued by Ministry of Internal Affairs and Communications on March 28, 2006, based on Sub-section 1.1 of Article 6 of the Ministry's Rule for Enforcement of Radio Law of Japan,
2. Use this product only after you obtained the license of Test Radio Station as provided in Radio Law of Japan with respect to this product, or
3. Use of this product only after you obtained the Technical Regulations Conformity Certification as provided in Radio Law of Japan with respect to this product. Also, please do not transfer this product, unless you give the same notice above to the transferee. Please note that if you could not follow the instructions above, you will be subject to penalties of Radio Law of Japan.

Texas Instruments Japan Limited
(address) 24-1, Nishi-Shinjuku 6 chome, Shinjuku-ku, Tokyo, Japan

<http://www.tij.co.jp>

【ご使用にあたっての注】

本開発キットは技術基準適合証明を受けておりません。

本製品のご使用に際しては、電波法遵守のため、以下のいずれかの措置を取っていただく必要がありますのでご注意ください。

1. 電波法施行規則第6条第1項第1号に基づく平成18年3月28日総務省告示第173号で定められた電波暗室等の試験設備でご使用いただく。
2. 実験局の免許を取得後ご使用いただく。
3. 技術基準適合証明を取得後ご使用いただく。

なお、本製品は、上記の「ご使用にあたっての注意」を譲渡先、移転先に通知しない限り、譲渡、移転できないものとします。

上記を遵守頂けない場合は、電波法の罰則が適用される可能性があることをご留意ください。

日本テキサス・インスツルメンツ株式会社
東京都新宿区西新宿6丁目24番1号
西新宿三井ビル

<http://www.tij.co.jp>

EVALUATION BOARD/KIT/MODULE (EVM) WARNINGS, RESTRICTIONS AND DISCLAIMERS

For Feasibility Evaluation Only, in Laboratory/Development Environments. Unless otherwise indicated, this EVM is not a finished electrical equipment and not intended for consumer use. It is intended solely for use for preliminary feasibility evaluation in laboratory/development environments by technically qualified electronics experts who are familiar with the dangers and application risks associated with handling electrical mechanical components, systems and subsystems. It should not be used as all or part of a finished end product.

Your Sole Responsibility and Risk. You acknowledge, represent and agree that:

1. You have unique knowledge concerning Federal, State and local regulatory requirements (including but not limited to Food and Drug Administration regulations, if applicable) which relate to your products and which relate to your use (and/or that of your employees, affiliates, contractors or designees) of the EVM for evaluation, testing and other purposes.
2. You have full and exclusive responsibility to assure the safety and compliance of your products with all such laws and other applicable regulatory requirements, and also to assure the safety of any activities to be conducted by you and/or your employees, affiliates, contractors or designees, using the EVM. Further, you are responsible to assure that any interfaces (electronic and/or mechanical) between the EVM and any human body are designed with suitable isolation and means to safely limit accessible leakage currents to minimize the risk of electrical shock hazard.
3. You will employ reasonable safeguards to ensure that your use of the EVM will not result in any property damage, injury or death, even if the EVM should fail to perform as described or expected.
4. You will take care of proper disposal and recycling of the EVM's electronic components and packing materials.

Certain Instructions. It is important to operate this EVM within TI's recommended specifications and environmental considerations per the user guidelines. Exceeding the specified EVM ratings (including but not limited to input and output voltage, current, power, and environmental ranges) may cause property damage, personal injury or death. If there are questions concerning these ratings please contact a TI field representative prior to connecting interface electronics including input power and intended loads. Any loads applied outside of the specified output range may result in unintended and/or inaccurate operation and/or possible permanent damage to the EVM and/or interface electronics. Please consult the EVM User's Guide prior to connecting any load to the EVM output. If there is uncertainty as to the load specification, please contact a TI field representative. During normal operation, some circuit components may have case temperatures greater than 60°C as long as the input and output are maintained at a normal ambient operating temperature. These components include but are not limited to linear regulators, switching transistors, pass transistors, and current sense resistors which can be identified using the EVM schematic located in the EVM User's Guide. When placing measurement probes near these devices during normal operation, please be aware that these devices may be very warm to the touch. As with all electronic evaluation tools, only qualified personnel knowledgeable in electronic measurement and diagnostics normally found in development environments should use these EVMs.

Agreement to Defend, Indemnify and Hold Harmless. You agree to defend, indemnify and hold TI, its licensors and their representatives harmless from and against any and all claims, damages, losses, expenses, costs and liabilities (collectively, "Claims") arising out of or in connection with any use of the EVM that is not in accordance with the terms of the agreement. This obligation shall apply whether Claims arise under law of tort or contract or any other legal theory, and even if the EVM fails to perform as described or expected.

Safety-Critical or Life-Critical Applications. If you intend to evaluate the components for possible use in safety critical applications (such as life support) where a failure of the TI product would reasonably be expected to cause severe personal injury or death, such as devices which are classified as FDA Class III or similar classification, then you must specifically notify TI of such intent and enter into a separate Assurance and Indemnity Agreement.

Mailing Address: Texas Instruments, Post Office Box 655303, Dallas, Texas 75265
Copyright © 2012, Texas Instruments Incorporated

IMPORTANT NOTICE

Texas Instruments Incorporated and its subsidiaries (TI) reserve the right to make corrections, enhancements, improvements and other changes to its semiconductor products and services per JESD46, latest issue, and to discontinue any product or service per JESD48, latest issue. Buyers should obtain the latest relevant information before placing orders and should verify that such information is current and complete. All semiconductor products (also referred to herein as "components") are sold subject to TI's terms and conditions of sale supplied at the time of order acknowledgment.

TI warrants performance of its components to the specifications applicable at the time of sale, in accordance with the warranty in TI's terms and conditions of sale of semiconductor products. Testing and other quality control techniques are used to the extent TI deems necessary to support this warranty. Except where mandated by applicable law, testing of all parameters of each component is not necessarily performed.

TI assumes no liability for applications assistance or the design of Buyers' products. Buyers are responsible for their products and applications using TI components. To minimize the risks associated with Buyers' products and applications, Buyers should provide adequate design and operating safeguards.

TI does not warrant or represent that any license, either express or implied, is granted under any patent right, copyright, mask work right, or other intellectual property right relating to any combination, machine, or process in which TI components or services are used. Information published by TI regarding third-party products or services does not constitute a license to use such products or services or a warranty or endorsement thereof. Use of such information may require a license from a third party under the patents or other intellectual property of the third party, or a license from TI under the patents or other intellectual property of TI.

Reproduction of significant portions of TI information in TI data books or data sheets is permissible only if reproduction is without alteration and is accompanied by all associated warranties, conditions, limitations, and notices. TI is not responsible or liable for such altered documentation. Information of third parties may be subject to additional restrictions.

Resale of TI components or services with statements different from or beyond the parameters stated by TI for that component or service voids all express and any implied warranties for the associated TI component or service and is an unfair and deceptive business practice. TI is not responsible or liable for any such statements.

Buyer acknowledges and agrees that it is solely responsible for compliance with all legal, regulatory and safety-related requirements concerning its products, and any use of TI components in its applications, notwithstanding any applications-related information or support that may be provided by TI. Buyer represents and agrees that it has all the necessary expertise to create and implement safeguards which anticipate dangerous consequences of failures, monitor failures and their consequences, lessen the likelihood of failures that might cause harm and take appropriate remedial actions. Buyer will fully indemnify TI and its representatives against any damages arising out of the use of any TI components in safety-critical applications.

In some cases, TI components may be promoted specifically to facilitate safety-related applications. With such components, TI's goal is to help enable customers to design and create their own end-product solutions that meet applicable functional safety standards and requirements. Nonetheless, such components are subject to these terms.

No TI components are authorized for use in FDA Class III (or similar life-critical medical equipment) unless authorized officers of the parties have executed a special agreement specifically governing such use.

Only those TI components which TI has specifically designated as military grade or "enhanced plastic" are designed and intended for use in military/aerospace applications or environments. Buyer acknowledges and agrees that any military or aerospace use of TI components which have **not** been so designated is solely at the Buyer's risk, and that Buyer is solely responsible for compliance with all legal and regulatory requirements in connection with such use.

TI has specifically designated certain components as meeting ISO/TS16949 requirements, mainly for automotive use. In any case of use of non-designated products, TI will not be responsible for any failure to meet ISO/TS16949.

Products

| | |
|------------------------------|--|
| Audio | www.ti.com/audio |
| Amplifiers | amplifier.ti.com |
| Data Converters | dataconverter.ti.com |
| DLP® Products | www.dlp.com |
| DSP | dsp.ti.com |
| Clocks and Timers | www.ti.com/clocks |
| Interface | interface.ti.com |
| Logic | logic.ti.com |
| Power Mgmt | power.ti.com |
| Microcontrollers | microcontroller.ti.com |
| RFID | www.ti-rfid.com |
| OMAP Applications Processors | www.ti.com/omap |
| Wireless Connectivity | www.ti.com/wirelessconnectivity |

Applications

| | |
|-------------------------------|--|
| Automotive and Transportation | www.ti.com/automotive |
| Communications and Telecom | www.ti.com/communications |
| Computers and Peripherals | www.ti.com/computers |
| Consumer Electronics | www.ti.com/consumer-apps |
| Energy and Lighting | www.ti.com/energy |
| Industrial | www.ti.com/industrial |
| Medical | www.ti.com/medical |
| Security | www.ti.com/security |
| Space, Avionics and Defense | www.ti.com/space-avionics-defense |
| Video and Imaging | www.ti.com/video |

TI E2E Community

e2e.ti.com