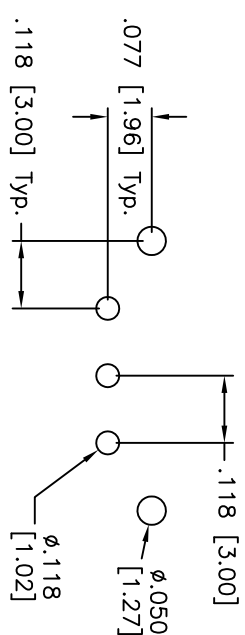
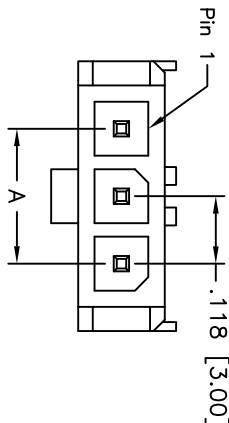
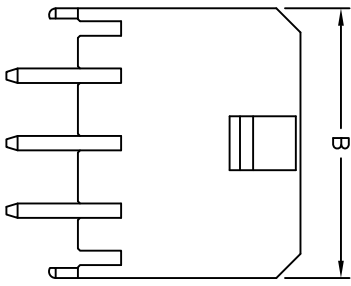
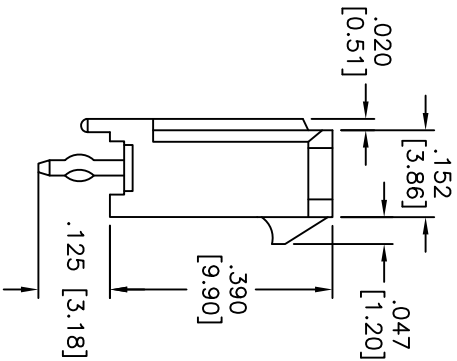


Rev	AWO #	Description	Date	Appr
-		RELEASED	8/06/10	

APPROVED: \_\_\_\_\_  
 DATE: \_\_\_\_\_ TITLE: \_\_\_\_\_



RECOMMENDED PCB LAYOUT



POSITIONS	Dimension	
	A	B
2	.118 [3.00]	.380 [9.65]
3	.236 [6.00]	.498 [12.65]
4	.354 [9.00]	.616 [15.65]
5	.472 [12.00]	.734 [18.65]
6	.591 [15.00]	.852 [21.65]
7	.709 [18.00]	.970 [24.65]
8	.827 [21.00]	1.088 [27.65]
9	.945 [24.00]	1.206 [30.65]
10	1.063 [27.00]	1.325 [33.65]
11	1.181 [30.00]	1.443 [36.65]
12	1.299 [33.00]	1.561 [39.65]

**SPECIFICATIONS:**

Material: Thermoplastic, rated UL 94V-0  
 Insulator color: Black  
 Contact: Brass, Tin plated  
 Electrical:  
 Operating voltage: 250 VAC  
 Current rating: 20 Awg: 5 Amps max  
 22 Awg: 5 Amps max  
 24 Awg: 4 Amps max  
 26 Awg: 3 Amps max  
 28 Awg: 2 Amps max  
 30 Awg: 1 Amp max.

Contact resistance: 10 mohms max.  
 Dielectric strength: 1500 VAC for 1 minute  
 Temperature rise: 50°C max.

Mechanical:  
 Wire size: 20 Awg thru 30 Awg  
 Environmental:  
 Lead free, RoHS compliant.



UNLESS OTHERWISE SPECIFIED  
 ALL DIMENSIONS ARE IN INCHES [MM]  
 TOLERANCES: EXCEPT AS NOTED  
 INCHES HOLEES  
 .X ± .10 ØXX ± .10  
 .XX ± .020 ØXXX ± .015  
 .XXX ± .015 ØXXX ± .010

**ADAM TECH**  
 909 Railway Avenue, Union, NJ 07083  
 Phone: 908-687-5000 Fax: 908-687-5710  
 TITLE: .118 [3.00] SINGLE ROW HEADER  
 VERTICAL, PCB TYPE

DRAWN	DY	8/06/10
CHECKED		
APPROVED		

SIZE	PART NO.	REV.
X	DML-1-XX-A-V-T-A	
REF: S0072T	SCALE: NTS	SHEET 1 OF 1