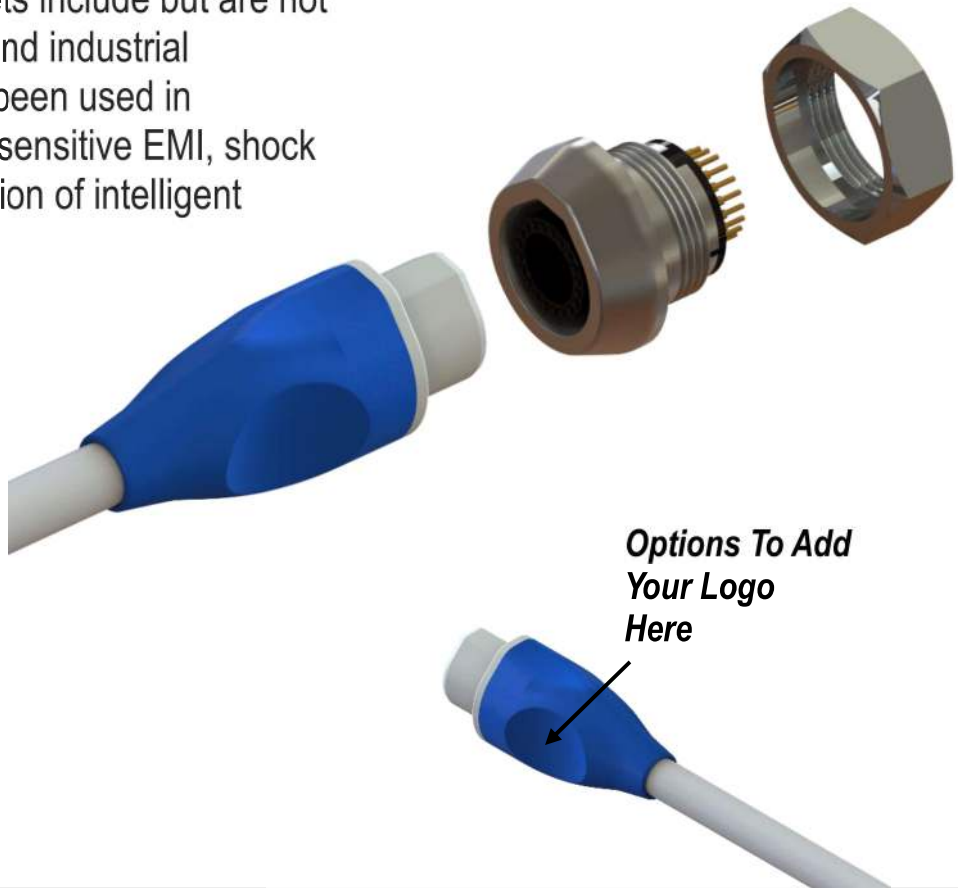


Onanon's *MagConnect™ | Echo* is performance engineered to be the most intuitive interconnect in the world. Its unique magnetic safety latch feature is ideal for medical applications, where time, precision, and quality are most critical. Additional suitable markets include but are not limited to the automotive, aerospace and industrial industries. MagConnect™ series has been used in applications with low & high voltages, sensitive EMI, shock & vibration environments, and integration of intelligent electronics.

- **2 to 20 pin capacity**
- **Intuitive and self-mating**
- **Magnetic safety de-latching**
- **Customizable for reusable or single use applications**
- **Easily add components such as EEPROMs, resistors and capacitors**
- **EMI/RFI Safe**
- **Low (<12v) & High (>5000v) Voltage Safe**
- **Rugged use in outdoor wearables**
- **VF/HF/RF Safe**



## Specifications

### Mechanical

**Mating Type:** Magnetic  
**Mating Cycles:** 10k Min.  
**Mating Forces:**  
 Insertion: Magnetic  
 Removal: 3.5 lbf Min.

### Electrical

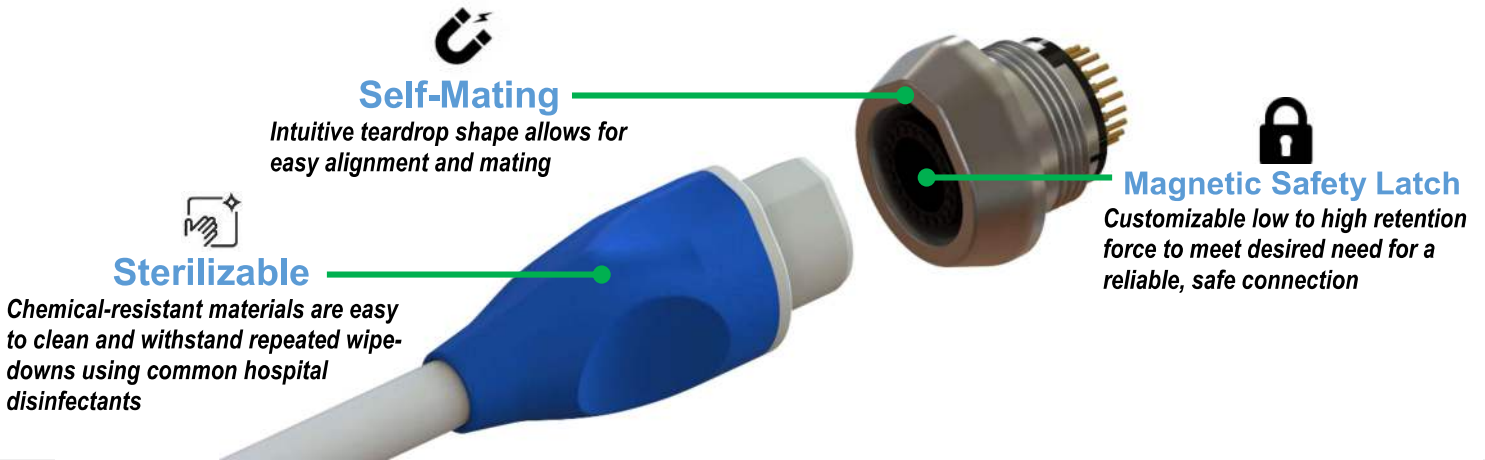
**Operating Voltage:**  
 1kVAC and 1.5kVDC  
**Operating Current:** 3A

### Environmental

**Sterilizable:** Gamma, EtO  
**Chemical Resistance:** Common cleaning solvents  
**Finger Safety:** IEC 60601-1  
**Storage & Operating Temp:**  
 0-150°C

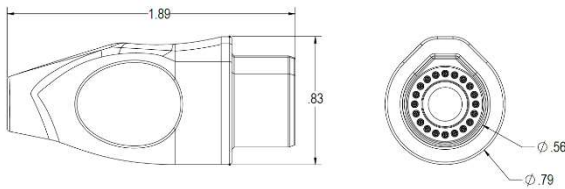
### Compatibility

**Contacts:** 20 pins  
**Plug Cable Assembly**  
**Accepted Wire Gauges:** 26-50 AWG  
**Cable Jacket OD:** 0.286" Max  
**Contact Termination:** Solder

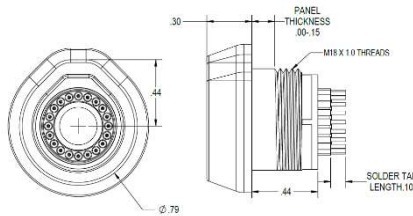


## Dimensions

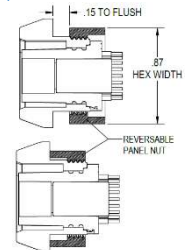
**Plug**  
PN: 234-A001



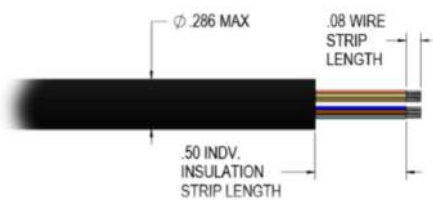
**Panel Mount Receptacle**  
PN: 234-A002



**Reversible Panel Nut**  
PN: 234-PT007  
(Included with 234-A002)

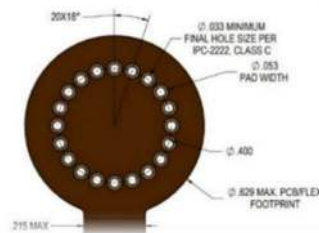


**Recommended Cable Specifications**

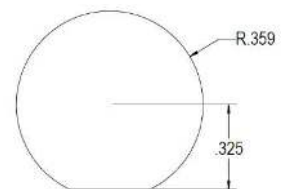


Units are in inches.  
Contact Sales for unspecified dimensions.

**Recommended PCB or Flex Dimensions**



**Recommended Panel Cutout**



## Materials & Assembly

### Plug Assembly

**Plug Housing:** Thermoplastic Polyester  
**Retaining Cap:** Thermoplastic Polyester  
**Male Pins:** Gold Plated Brass Alloy  
**Magnet:** Nickel Plated Neodymium  
**Slip-On Boot:** Thermoplastic Polyurethane

**Required Assembly:** Assemble connector body after terminating wires

### Panel Mount Receptacle

**Insulator Insert:** Thermoplastic Polyester  
**Metal Shell:** Chromium Plated Brass Alloy  
**Female Pins:** Gold Plated Brass Alloy  
**Magnet:** Nickel Plated Neodymium

**Required Assembly:** Solder a PCB or flex assembly