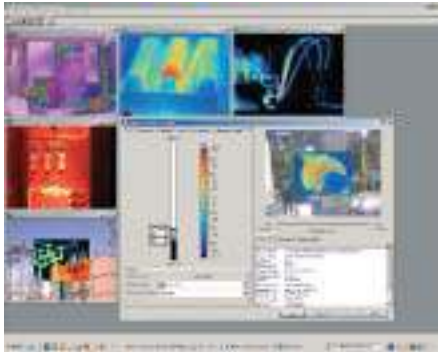


Ti40/Ti50 Series IR FlexCam® Thermal Imagers

FLUKE®

Specifications

(Check the Fluke web for detailed specifications)



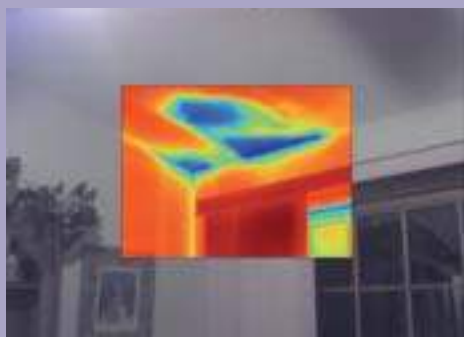
SmartView™ Software

Fluke SmartView™ software is included with each Fluke IR FlexCam® Thermal Imager. This powerful software is a modular suite of tools that annotates, views, edits and analyzes IR images. It also generates fully customizable and professional-looking reports in a few easy steps. The IR-Fusion technology is fully supported.



Complete package

The IR FlexCam thermal imagers are delivered as a complete package.



Building Diagnostics

Fluke also offers a line of thermal imagers for Building Diagnostics, the IR Insight and the TiR Series. Some typical applications are industrial roofing, moisture remediation, energy audits and home inspection. For more information on these thermal imagers please check the Fluke web.

	Ti40	Ti45	Ti50	Ti55
Thermal Imaging performance				
Field of view (FOV)*	23° horizontal x 17° vertical			
Spatial resolution (IFOV)*	2.60 mrad		1.30 mrad	
Min focus distance*	0.15 m			
Thermal sensitivity (NETD) at 30 °C	≤0.09 °C	≤0.08 °C	≤0.07 °C	≤0.05 °C
Detector data acquisition / Image frequency	30 Hz/30 Hz		60 Hz/60 Hz	
Focus	SmartFocus; one finger continuous focus			
IR digital zoom		2x	2x	2x, 4x, 8x
Detector size	160 x 120		320 x 240	
Detector type	Focal Plane Array, Vanadium Oxide (VOx) Uncooled Microbolometer			
Spectral band	8 µm to 14 µm			
Visual Imaging performance (Fusion models only)				
On-camera operating modes				
- Picture-in-Picture	•	•	•	•
- Full thermal, full visual light or merged thermal-visual images	•	•	•	•
Visible light camera	1280 x 1024 pixels, full color			
Visible light digital zoom	2x	2x	2x, 4x, 8x	
Temperature measurement				
Calibrated temperature range	-20 to 350 °C	-20 to 600 °C	-20 to 350 °C	-20 to 600 °C
1200 °C High temperature option		•		
Accuracy	±2°C or 2 % (whichever is greater)			
Measurement modes				
- Centerpoint, center box (area min/max, average)	•	•	•	•
- Moveable spots/boxes		•		•
- Isotherms, automatic hot and cold point detection,		•		•
- Visible color alarm above and below		•		•
Emissivity correction	0.1 to 1.0 (0.01 increments)			
Image presentation				
Digital display	5" large high-resolution backlight LCD			
Video output	RS170 EIA/NTSC or CCIR/PAL composite video			
Palettes	Grayscale, grayscale inverted, blue red, high contrast, hot metal, ironbow, amber, amber inverted			
Optional lenses				
54 mm Telephoto lens				
Field of view (FOV)	9° horizontal x 6° vertical			
Spatial resolution (IFOV)	0.94 mrad		0.47 mrad	
Min focus distance	0.6 m			
10.5 mm wide angle lens				
Field of view (FOV)	42° horizontal x 32° vertical			
Spatial resolution (IFOV)	4.9 mrad		2.45 mrad	
Min focus distance	0.3 m			
Image and data storage				
Storage medium	Compact flash card (512Mb) stores over 1000 IR images			
File formats supported	14 bit measurement data included. JPEG, BMP, PCX, PNG			
Interfaces and software				
Interface	Compact flash card reader included			
Included software	SmartView; Full analysis and reporting software			
Laser (IR-Fusion models only)				
Classification	Class II			
Laser targeting	Laser dot visible on blended and visual image			
Controls and adjustments				
Set-up controls	Date/time, °C/°F, language, scale, LCD intensity			
Image controls	Level, span, auto adjust (continuous/manual)			
On-screen indicators	Battery status, emissivity, background temperature and real time clock			

*standard 20 mm Germanium lens

Battery life: 3 hours continuous operation (2 hours on FT models)

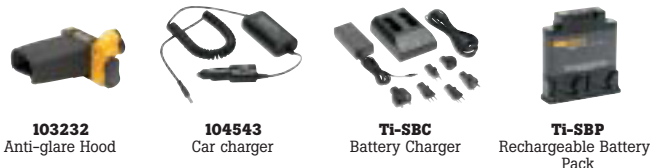
Water and dust resistant: IP54

Size (HxWxD): 162 mm x 262 mm x 101 mm

Weight: 1.85 kg

Two Years Warranty

Recommended Accessories



103232
Anti-glare Hood

104543
Car charger

Ti-SBC
Battery Charger

Ti-SBP
Rechargeable Battery Pack