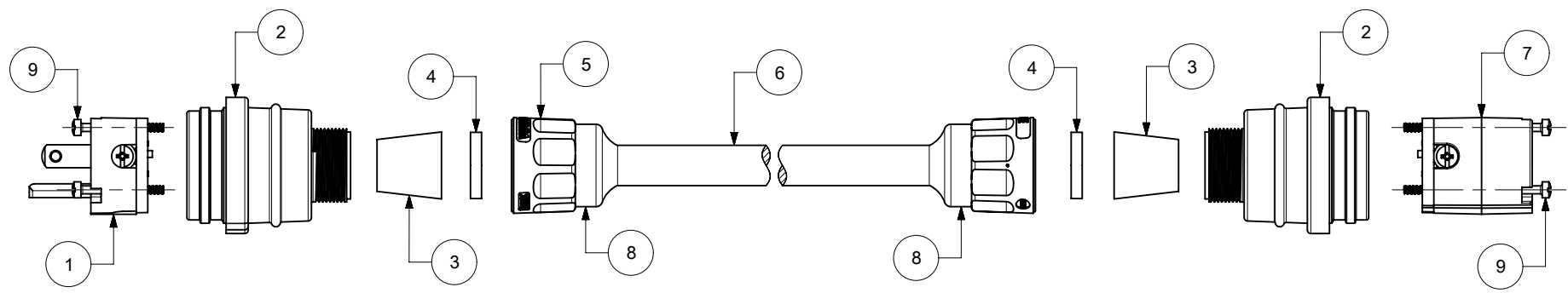
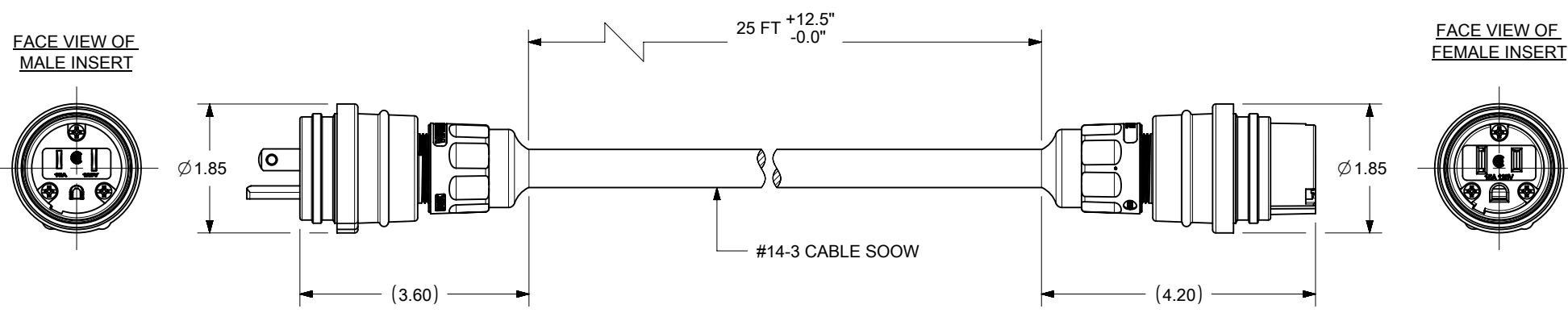


D



C



B

ITEM NO.	DESCRIPTION	MATERIAL	QTY.	
1	MALE INSERT ASSY.	NYLON, POLYCARBONATE, BRASS PLATING - NICKEL OR ZINC	PENDING APPROVAL	
2	WATERTITE - MALE HUSK	SILICONE		2
3	GROMMET	RUBBER		2
4	FRICITION RING	NYLON		2
5	COMPRESSION NUT YELLOW	NYLON		2
6	YELL SOOWCORD	COPPER WIRE		1
7	FEMALE INSERT ASSY.	NYLON, POLYCARBONATE, BRASS PLATING - NICKEL OR ZINC		1
8	CABLE GLOVE	SILICONE		2
9	RETAINING SCREW	STAINLESS STEEL		6

MATERIAL NO.	ENGINEERING NO.
1301430075	09389

THIS DRAWING CONTAINS INFORMATION THAT IS PROPRIETARY TO MOLEX ELECTRONIC TECHNOLOGIES, LLC AND SHOULD NOT BE USED WITHOUT WRITTEN PERMISSION										
SYMBOLS		DIMENSION UNITS		SCALE		CURRENT REV DESC: MIGRATION TO ECTR/NX				
∇ = 0	INCH	NTS				EC NO: 622757 DRWN: PPURSUTANDEL 2019/11/06 CHK'D: DNGUYEN62 2019/11/18 APPR: INITIAL REVISION: DRWN: TVICKERS 2007/11/05 APPR: HKNEELAND 2007/11/05				
∇ = 0	GENERAL TOLERANCES (UNLESS SPECIFIED)									
∇ = 0		MM	INCH							
∇ = 0	4 PLACES	±	±							
∇ = 0	3 PLACES	±	± 0.005							
∇ = 0	2 PLACES	±	± 0.01							
∇ = 0	1 PLACE	±	± 0.02							
∇ = 0	0 PLACES	±	±							
∇ = 0	ANGULAR TOL		± °							
∇ = 0	DRAFT WHERE APPLICABLE MUST REMAIN WITHIN DIMENSIONS					THIRD ANGLE PROJECTION		DRAWING		SERIES
						A-SIZE		130143		MATERIAL NUMBER
						SEE CHART		GENERAL MARKET		SHEET NUMBER

molex

14W47 W/25' CORD & 15WW47MB

PRODUCT CUSTOMER DRAWING

DOCUMENT NUMBER	DOC TYPE	DOC PART	REVISION
SD-130143-003	PSD	001	B1

A

DOCUMENT STATUS	RQ	RELEASE DATE
-----------------	----	--------------