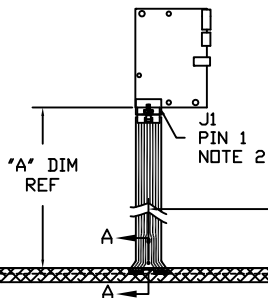


DGA DIAG: 42.93 [1090.4]  
 AA DIAG: 41.57 [1055.8]

TOP LEVEL NUMBER	SKU NUMBER	TYPE	DIM "A" (TOTAL GLASS TO FLEXTAIL CONN)	PRODUCT SPEC
DSTK9007-3400	98-0003-2675-5	DUAL	12.00" [304.8]	33626/34017

**DUAL**  
 DST-TC-3400DC  
 98-0003-3288-6  
 DUAL MODE CONTROLLER  
 COMPONENT SIDE

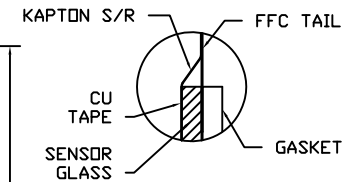


"A" DIM REF

J1  
 PIN 1  
 NOTE 2

21.375±0.030 [542.93±0.76]

.50  
 [12.70]



SECTION A-A  
 SCALE: 8/1

J1 PINOUT	
1	CH 3
2	CH 2
3	PWR
4	2.5V
5	GRD
6	PWR
7	CH 0
8	CH 1

1.10  
 [27.9]  
 TYP  
 8X

CU TAPE  
 3 SIDES

19.05 [483.9] 2X  
 GASKET  
 NOTE 3

SENSOR FRONT

20.250  
 [514.35]  
 AA

21.250  
 [539.75]  
 DGA

.087 [2.21]  
 GLASS  
 .174 [4.42]  
 TOTAL THK.

35.10 [891.5] GASKET 2X  
 NOTE 3

1.10 [27.9]  
 REF

36.300 [922.02] AA

.50 [12.70]

37.300 [947.42] DGA

NOTES:

- WEIGHT OF GLASS IN GRAMS: 2825±10%
- 8 PIN AMP CONNECTOR  
 LATCH STYLE HOUSING P/N: 487526-7  
 TIN CONTACTS P/N: 2-487406-4  
 HOUSING ORIENTED WITH LATCH UP
- GASKET ON SENSOR BACKSIDE

06	REVISE PER CD 030743	7/00	ISB
05	REVISE PER CD 028824	3/08	ISB
04	REVISE PER CD 027300	5/07	JAH

		MKT DWG DST2270DX 40"-0	
INCHES [MM] .X ±.03 .XX ±.05 .XXX ±.015 ANGLES ±1°		AUTOCAD 1 OF 1	
DO NOT SCALE DRAWING 1 = 1		27748-MKT 06	