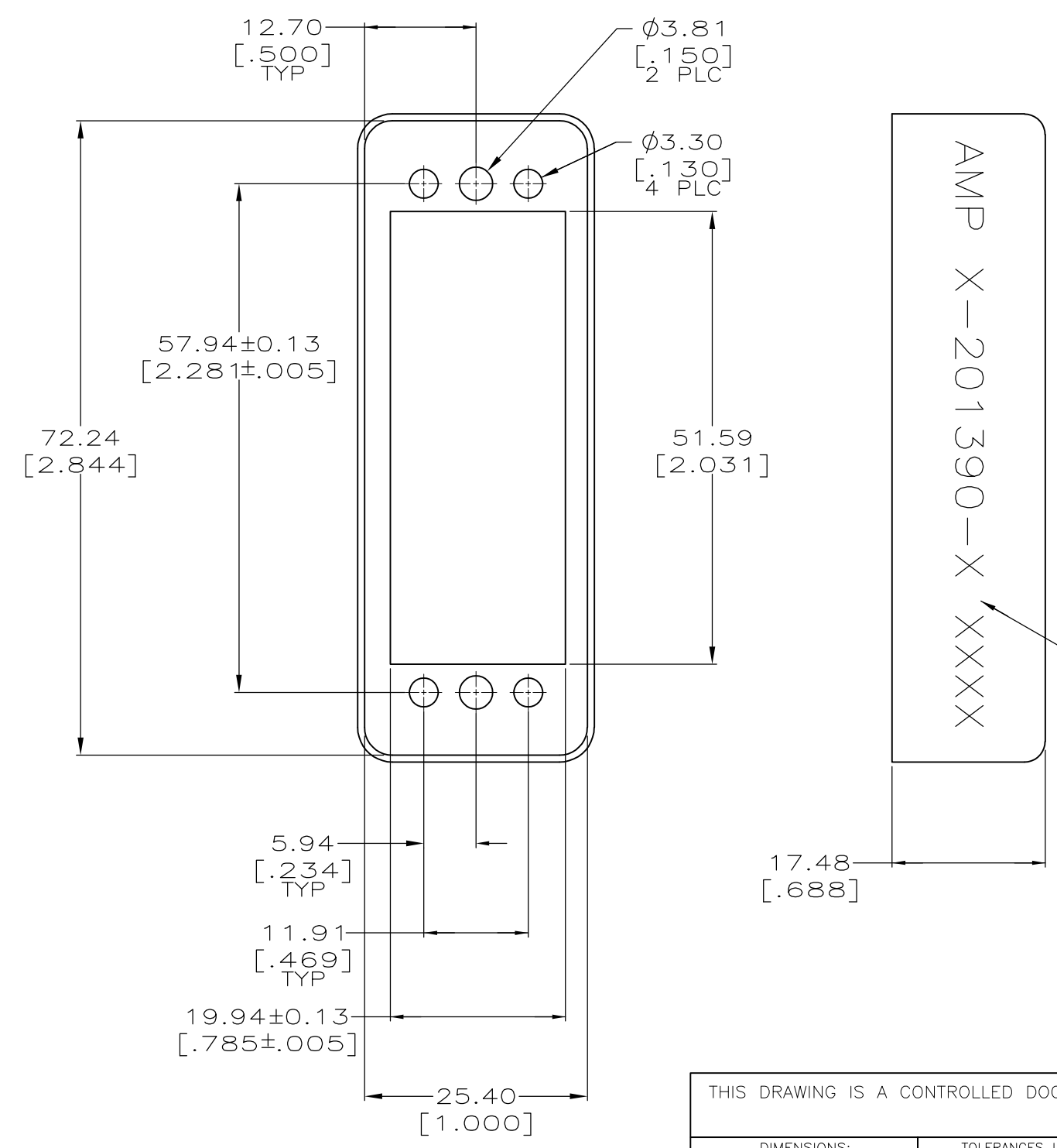


THIS DRAWING IS UNPUBLISHED. RELEASED FOR PUBLICATION  
 © COPYRIGHT - By - ALL RIGHTS RESERVED.

REVISIONS				
P	LTR	DESCRIPTION	DATE	APVD
	H2	REVISED PER ECO-16-004000	27SEP2016	NK MZ



- ① ALUMINUM ALLOY, .031 THICK.
- ② CARBON STEEL.
- ③ IRIDITE, CLEAR.
- ④ ANODIZED, OLIVE DRAB, PER MIL-A-8625.
- ⑤ 5.08µm [.000200] MIN NICKEL.
- ⑥ ANODIZED, BLACK.
- ⑦ OBSOLETE PARTS: OBSOLETE CIS STREAMLINING PER D.RENAUD/D.SINISI

FINISH	MATERIAL	PART NUMBER
OBSOLETE	⑥	<del>2-201390-6</del>
	⑤	201390-5
OBSOLETE	④	<del>201390-3</del>
	③	<del>201390-2</del>

THIS DRAWING IS A CONTROLLED DOCUMENT.		DWN C.REIFSNYDER 16 APR 96	<b>STE</b> TE Connectivity	
DIMENSIONS: mm [INCHES]		CHK R.STONE 24 MAY 96		
TOLERANCES UNLESS OTHERWISE SPECIFIED:		APVD G. STEINHAUER 21 JUN 96	NAME PIN HOOD, 50 PLACE, EXTERNAL, M SERIES	
0 PLC ± -		PRODUCT SPEC	SIZE	
1 PLC ± -		APPLICATION SPEC	CAGE CODE	
2 PLC ± 0.38 [.015]		WEIGHT	DRAWING NO	
3 PLC ± -		CUSTOMER DRAWING	A300779 C-201390	
4 PLC ± -			SCALE	SHEET
ANGLES ± -			2:1	1 OF 1
MATERIAL SEE TABLE				H2
FINISH SEE TABLE				