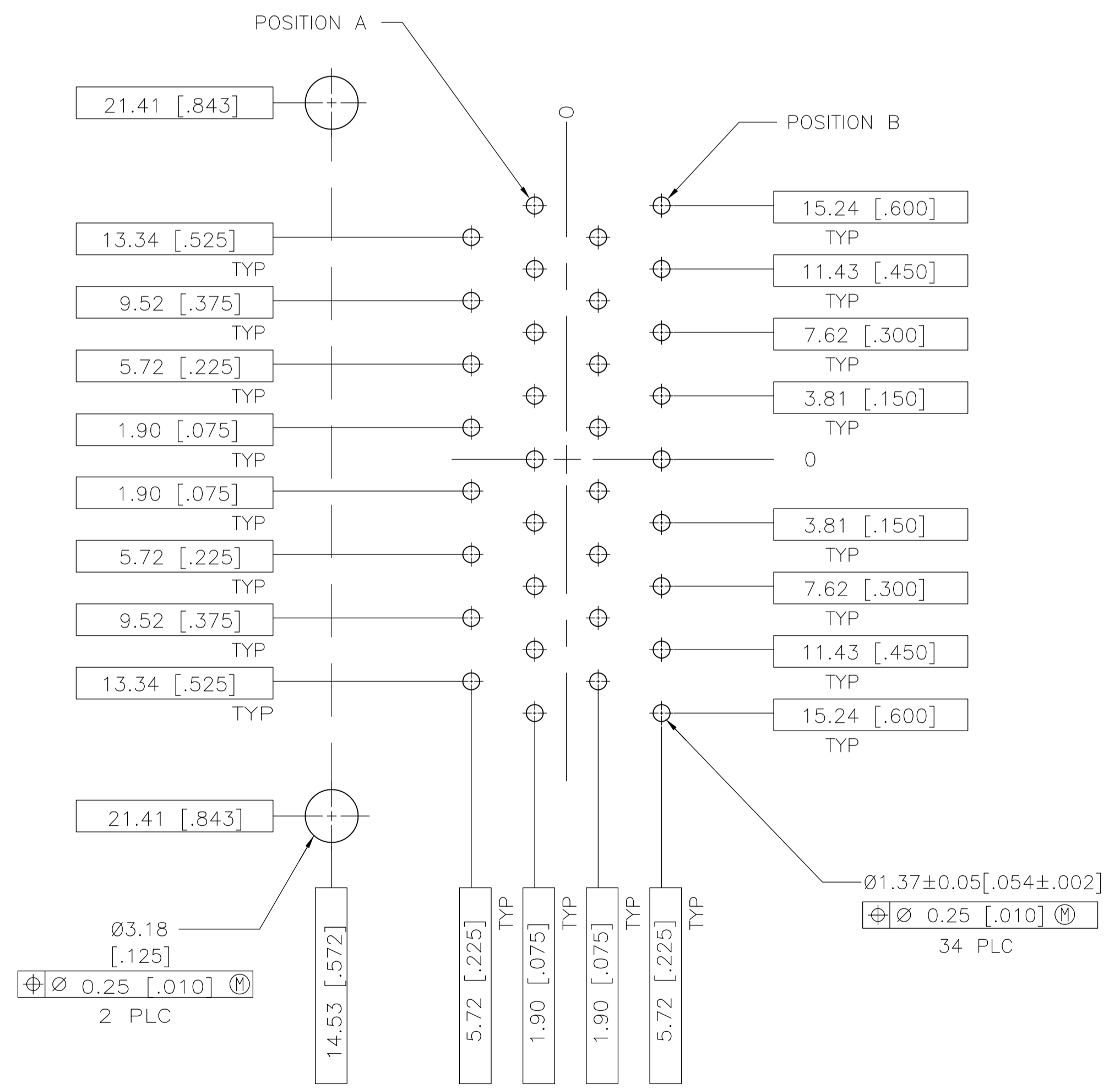
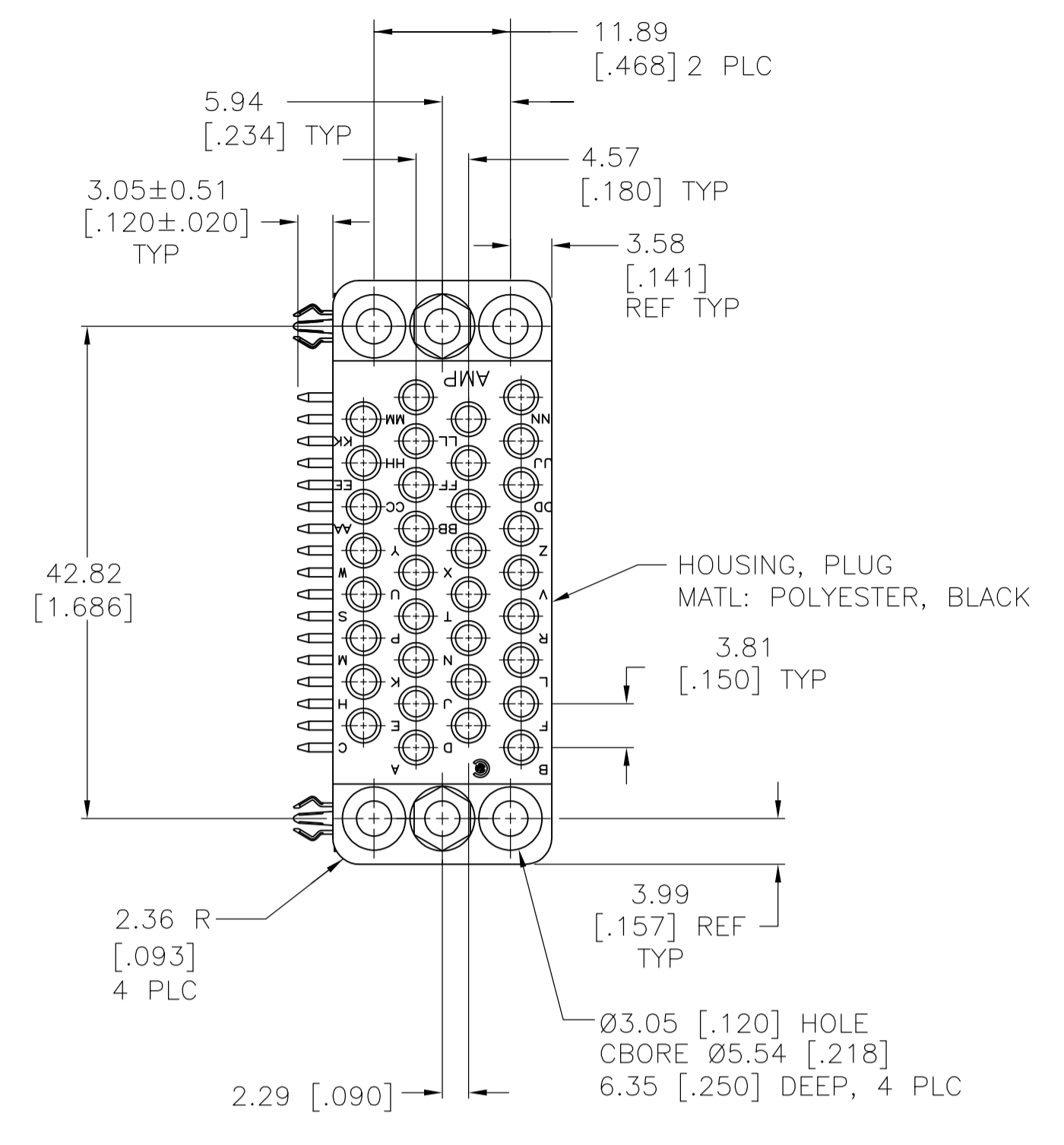
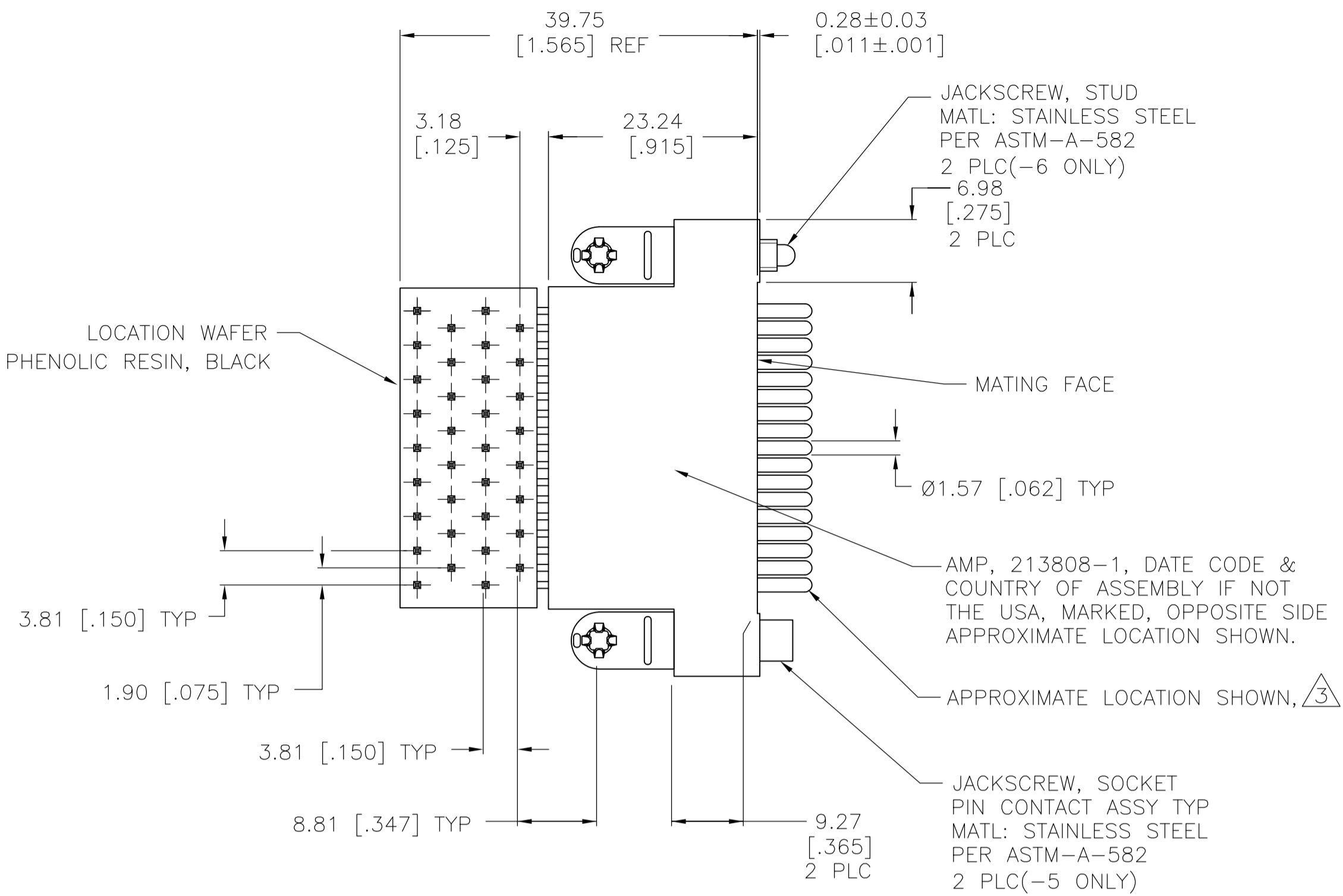
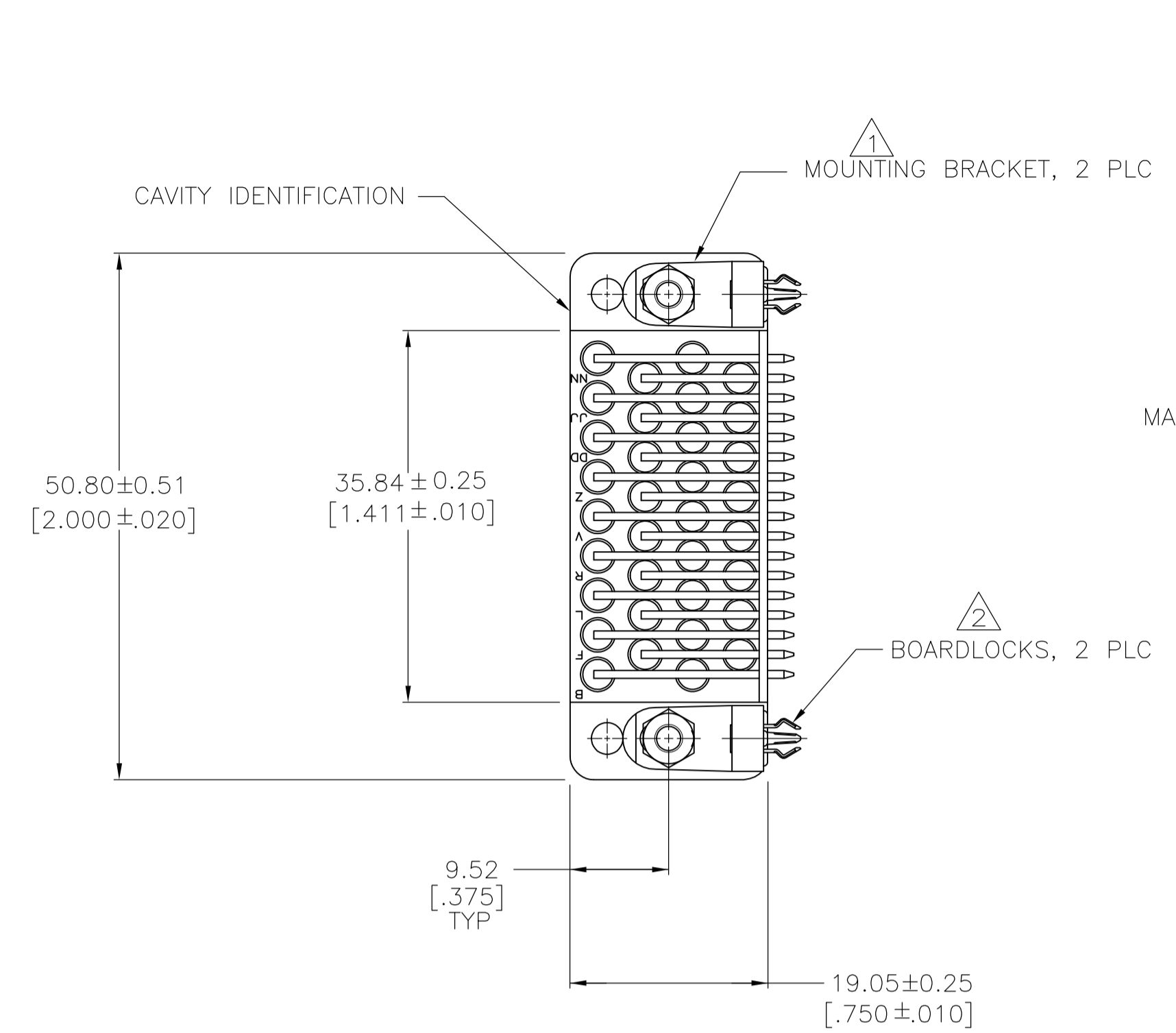


REVISIONS					
P	LTR	DESCRIPTION	DATE	DN	APVD
E4	REVISED PER ECO-16-013463		21SEP2016	NK	MZ
F	REVISED PER ECR-17-002064		28FEB2017	RS	MZ



- MOUNTING BRACKET:** MATERIAL: ZINC PER QQ-Z-363. FINISH: 3.81um [.000150] MIN NICKEL PER QQ-N-290 OVER 2.54um [.000100] MIN COPPER PER MIL-C-14550.
- BOARDLOCK:** MATERIAL: COPPER ALLOY PER ASTM-B-592. FINISH: 5.08um [.000200] MIN TIN-LEAD PER MIL-T-10727 OVER 1.27um [.000050] MIN NICKEL PER QQ-N-290.
- PIN CONTACT ASSEMBLY:** BODY MATERIAL: BRASS PER MIL-C-50. FINISH: 0.76um [.000030] MIN GOLD PER MIL-G-45204 FOR A LENGTH OF 5.08 [.200] MIN FROM MATING END, 2.54um [.000100] MIN TIN-LEAD PER MIL-T-10727 FOR A LENGTH OF 6.35 [.250] MIN FROM OPPOSITE END, BOTH OVER 1.27um [.000050] MIN NICKEL PER QQ-N-290. SPRING-MATERIAL: STAINLESS STEEL PER QQ-S-766. POST-MATERIAL: BRASS PER ASTM-B-134. FINISH: 2.54um [.000100] MIN TIN-LEAD PER MIL-T-10727 OVER 1.27um [.000050] MIN NICKEL PER QQ-N-290.
- PIN CONTACT ASSEMBLIES ARE SELECTIVELY LOADED INTO HOUSING AND LOCATION WAFER AT CIRCUITS A,B,C,D,E,F,H,K,P,R,S,T,U,V,W,X,Y AND AA. NO HARDWARE IS SUPPLIED.**
- PIN CONTACT ASSEMBLY:** BODY MATERIAL: BRASS PER MIL-C-50. FINISH: 0.76um [.000030] MIN GOLD PER MIL-G-45204 FOR A LENGTH OF 5.08 [.200] MIN FROM MATING END, 2.54um [.000100] MIN TIN-LEAD PER MIL-T-10727 FOR A LENGTH OF 6.35 [.250] MIN FROM OPPOSITE END, BOTH OVER 1.27um [.000050] MIN NICKEL PER QQ-N-290. SPRING-MATERIAL: STAINLESS STEEL PER QQ-S-766. POST-MATERIAL: BRASS PER ASTM-B-134. FINISH: 2.54um [.000100] MIN TIN PER MIL-T-10727 OVER 1.27um [.000050] MIN NICKEL PER QQ-N-290.
- BOARDLOCK:** MATERIAL: COPPER ALLOY PER ASTM-B-592. FINISH: 5.08um [.000200] MIN TIN PER MIL-T-10727 OVER 1.27um [.000050] MIN NICKEL PER QQ-N-290.
- OBSOLETE PARTS:** OBSOLETE CIS STREAMLINING PER D.RENAUD/D.SINISI

NOTE	CONTACT & POST PLATING	BOARDLOCK PLATING	PART NUMBER
7	5	6	213808-7
7	5	6	213808-6
7	5	6	213808-5
7	5	-	213808-4
7	5	6	213808-3
7	3	-	213808-2
7	3	2	213808-1

THIS DRAWING IS A CONTROLLED DOCUMENT. DIN D.BROCKWAY 08-22-94. CJK R.STONE 09-08-94. APVD NAME: R.STONE

DIMENSIONS: mm [INCHES]. TOLERANCES UNLESS OTHERWISE SPECIFIED: 0 PLC ±, 1 PLC ±, 2 PLC ± 0.13 [.005], 3 PLC ±, 4 PLC ±. ANGLES: ±.

MATERIAL: SEE CALLOUTS. FINISH: SEE CALLOUTS. WEIGHT: -. SIZE: A1. CASE CODE: 00779. DRAWING NO: 213808. RESTRICTED TO: CUSTOMER DRAWING. SCALE: 2:1. SHEET: 1 OF 1. REV: F.

STE TE Connectivity. CONNECTOR ASSEMBLY, PIN, 34 POSITION, RIGHT ANGLE, M SERIES.