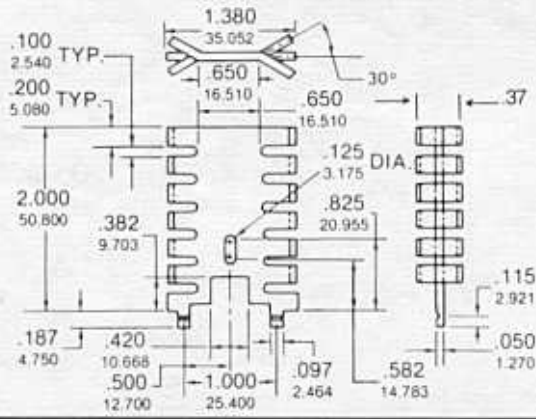
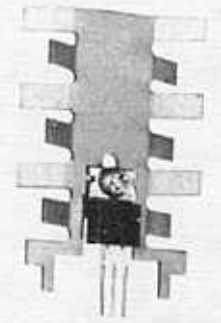
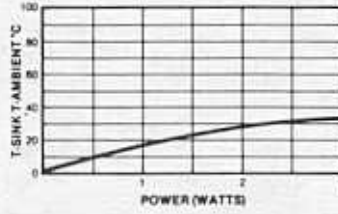


# Standard Heat Sinks



Vertical board mounted cooler.

Material... 1100-H14 Aluminum  
Finish..... Black Anodize  
or Tin Plate

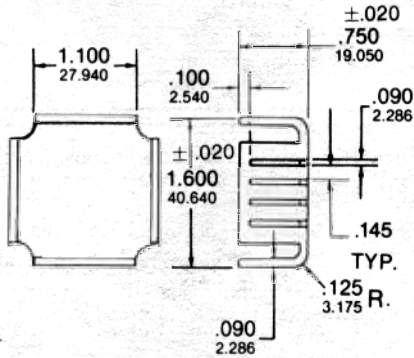


7-311

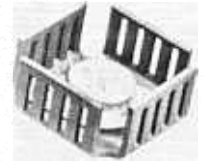
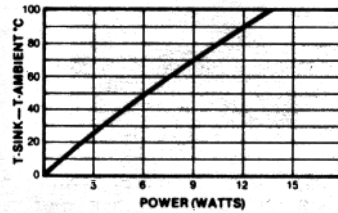
Suggested hole patterns:

| DEVICE   | HOLE PATTERN |
|----------|--------------|
| TO-66    | 03A          |
| TO-3     | 01D          |
| TO-220   | 14X          |
| TO-220-2 | 14A          |
| TO-3     | 01M          |

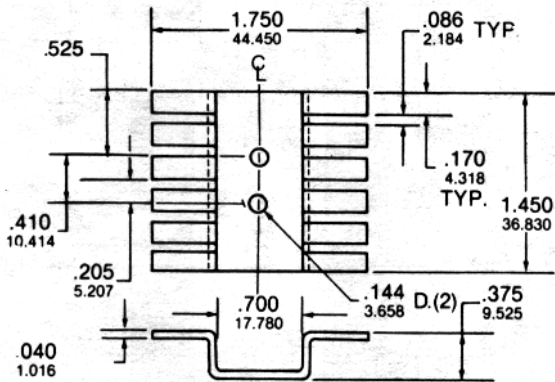
Other hole patterns available.  
See pages 27-32.



Material... 1100-H14 Aluminum  
Finish..... Black Anodize

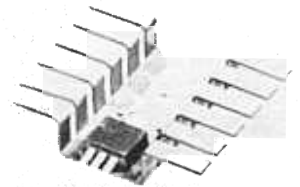
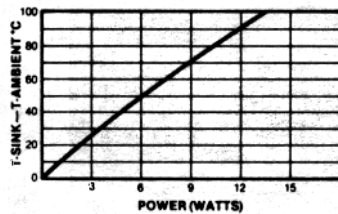


7-312

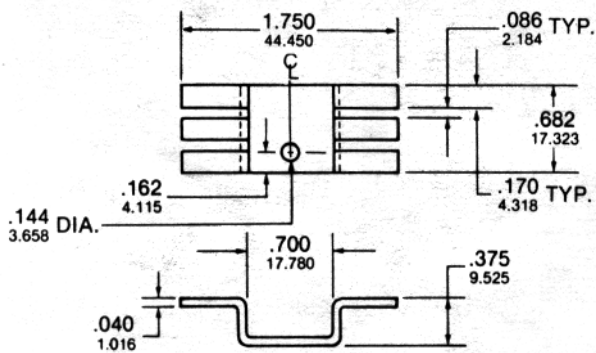


Low Profile.

Material... 1100-H14 Aluminum  
Finish..... Black Anodize

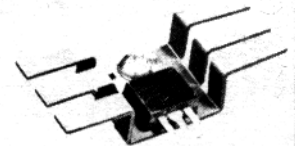
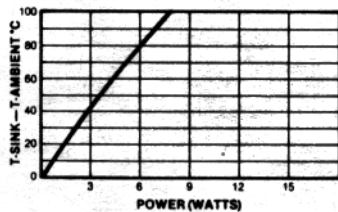


7-320



Low Profile.

Material... 1100-H14 Aluminum  
Finish..... Black Anodize



7-321

## Low Power