

REV. PA1	SHEET 1 OF 3	DOCUMENT NO. 10-504637-012
REVISIONS		
LTR	DESCRIPTION	DATE
PA1	INITIAL RELEASE	4/3/18

10-504637-012

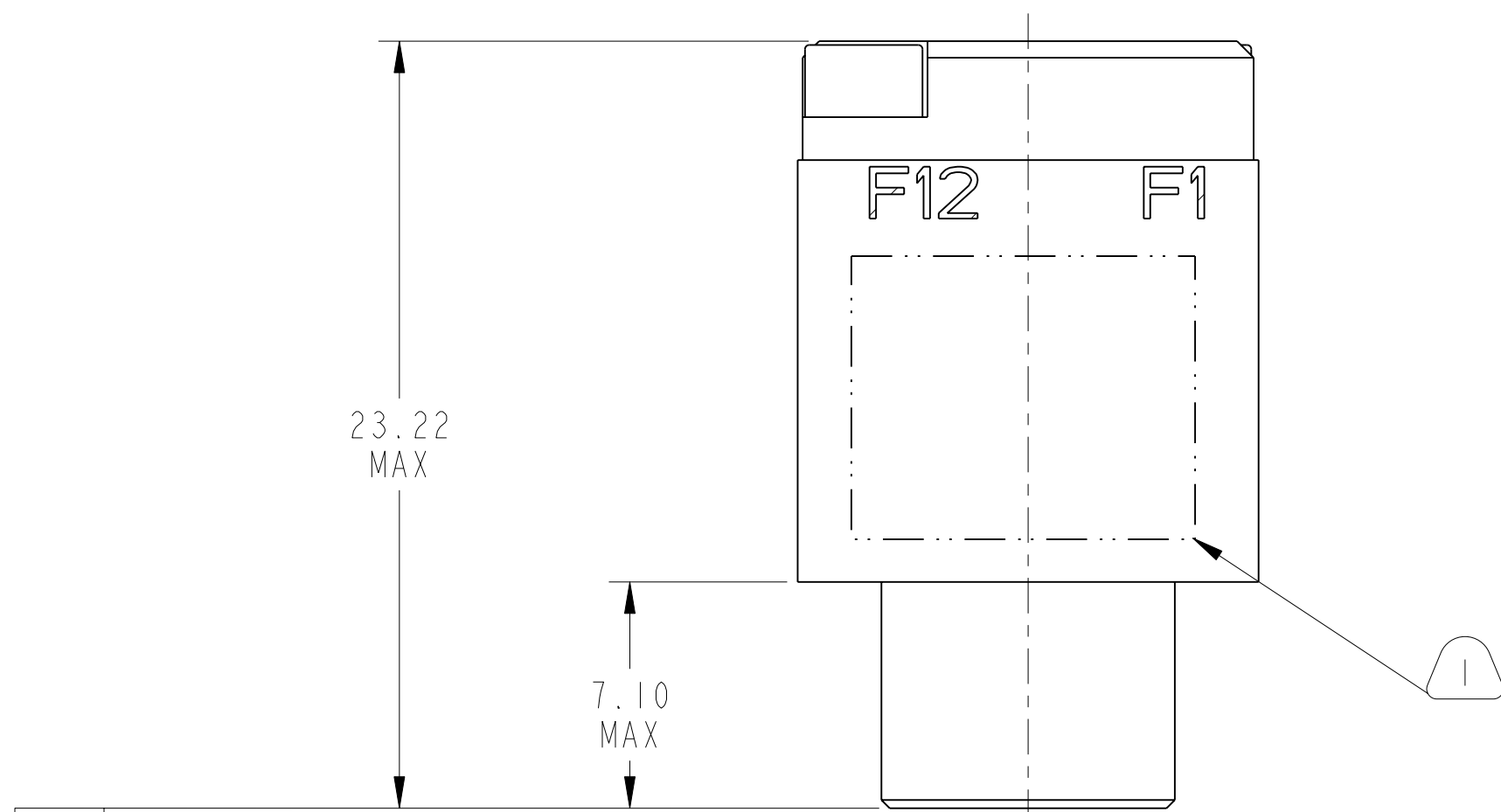
SHEET 1 OF 3

REV. PA1

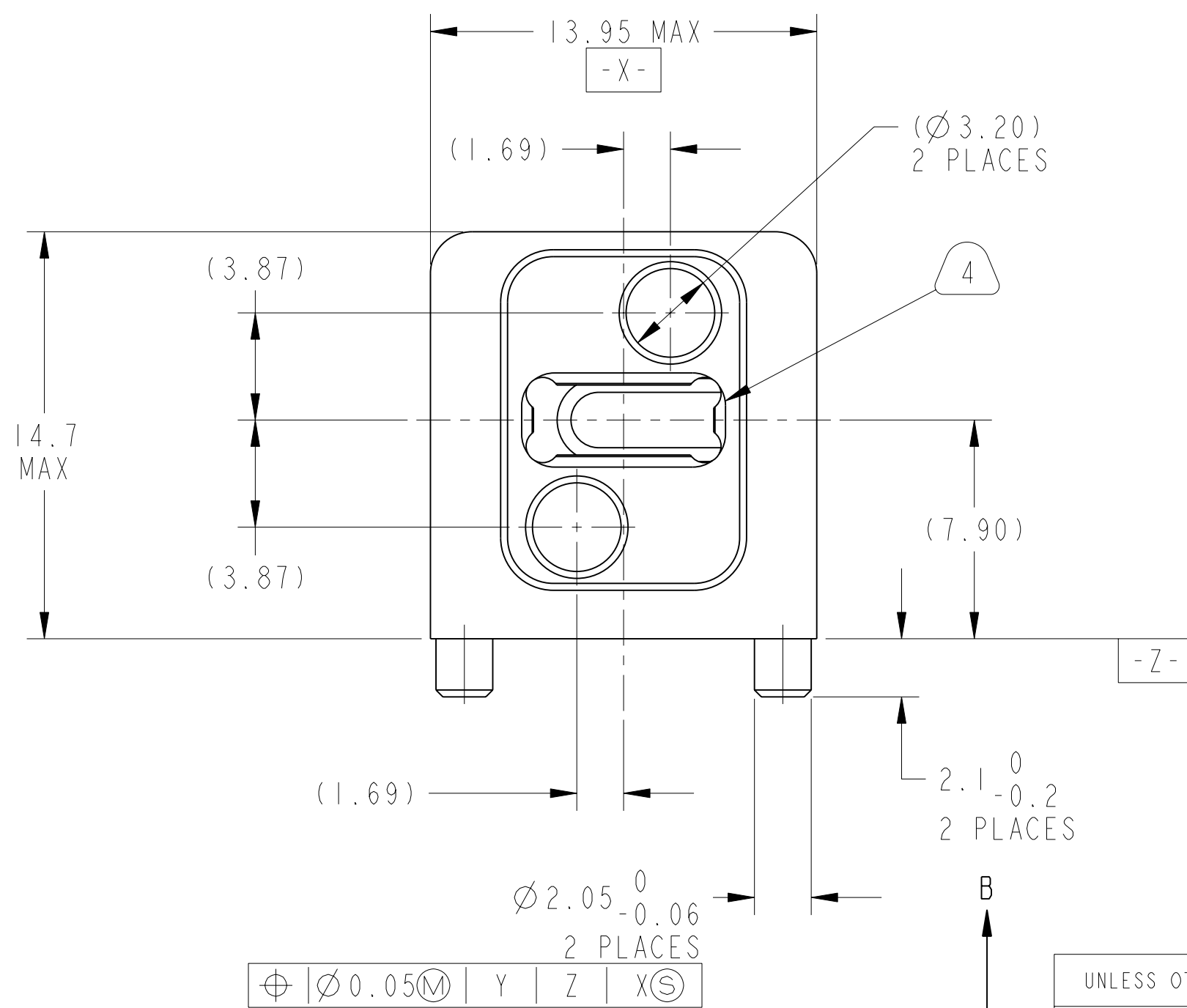
C

B

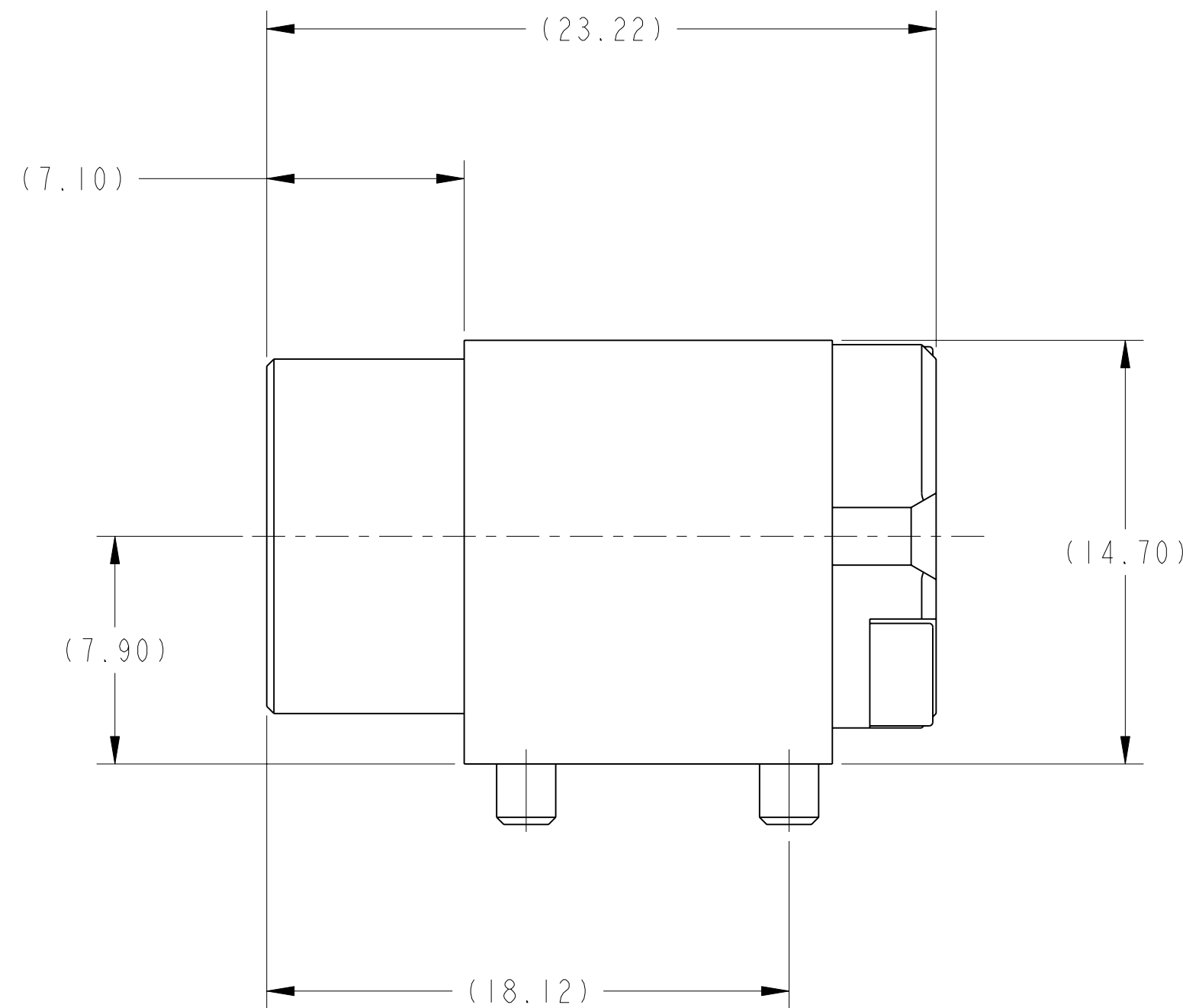
A



-Y-



-Z-



C

C

METRIC DRAWING

SEE SHEET 2

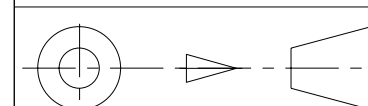
NOTES:

THE USE OF THIS DOCUMENT IS UNLIMITED. HOWEVER, DOCUMENTS REFERENCED HEREON MAY CONTAIN LIMITED RIGHTS DATA.

NONE	PRO/ENGINEER INFORMATION
NONE	Pro/e Model Used:
NONE	10-504637-012.DWG.ASSEM
NONE	Drawing Name:
NONE	10-504637-012
NONE	NEXT ASSEMBLY

SCALE 5.000

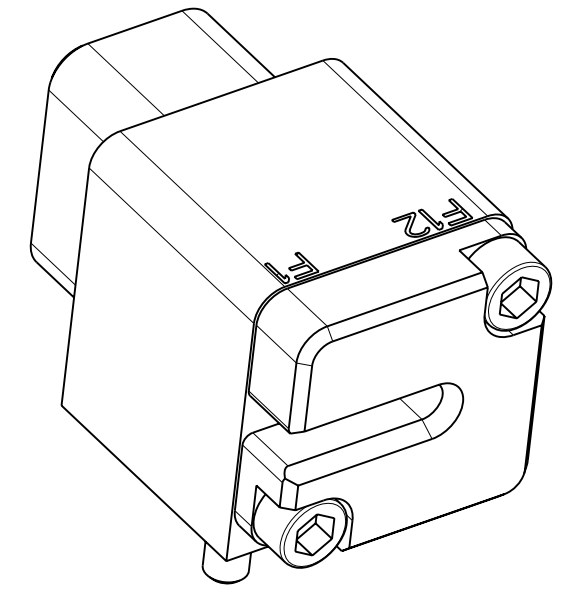
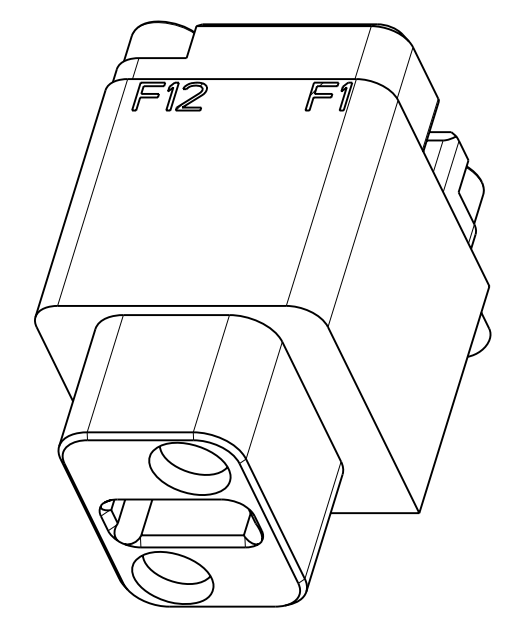
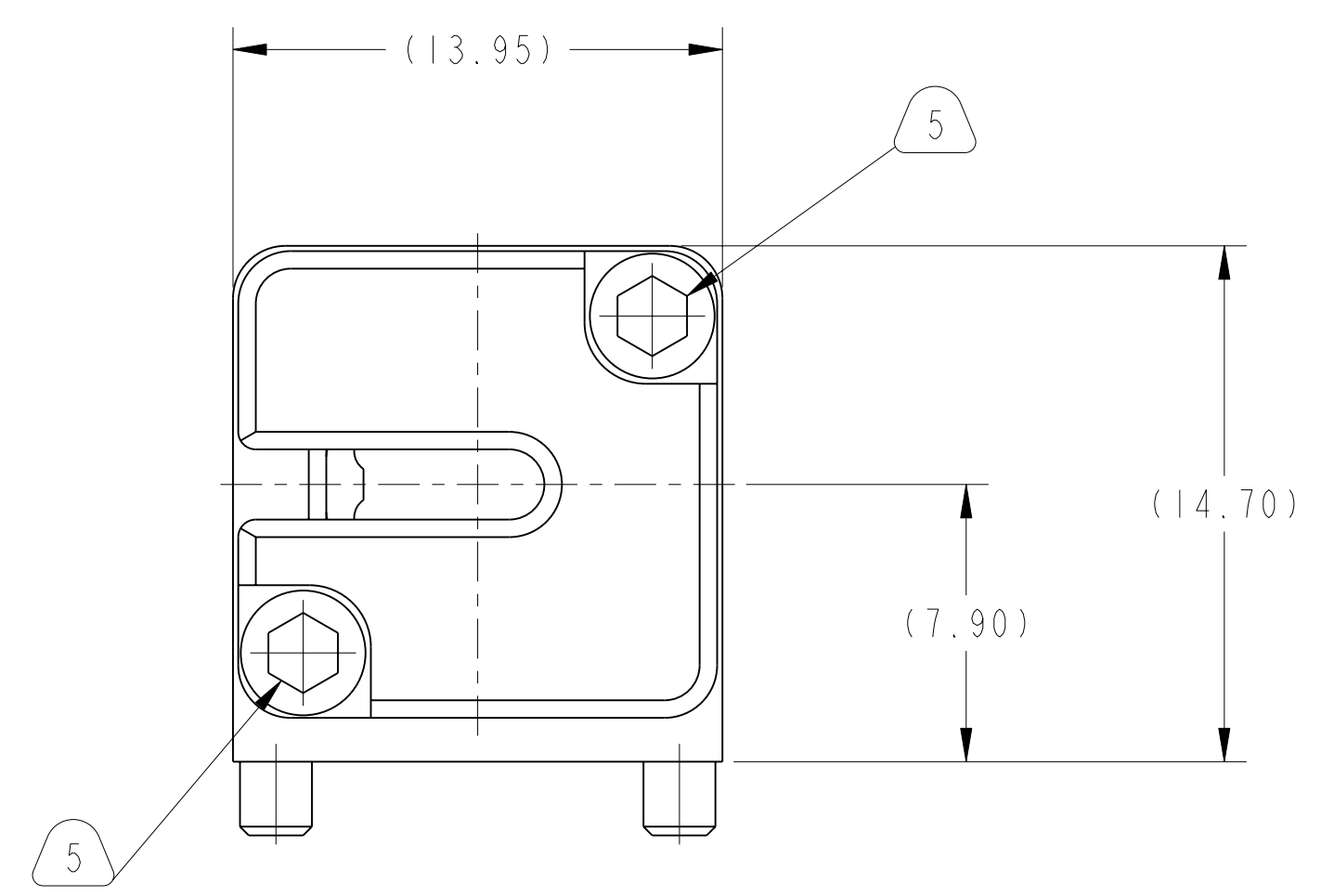
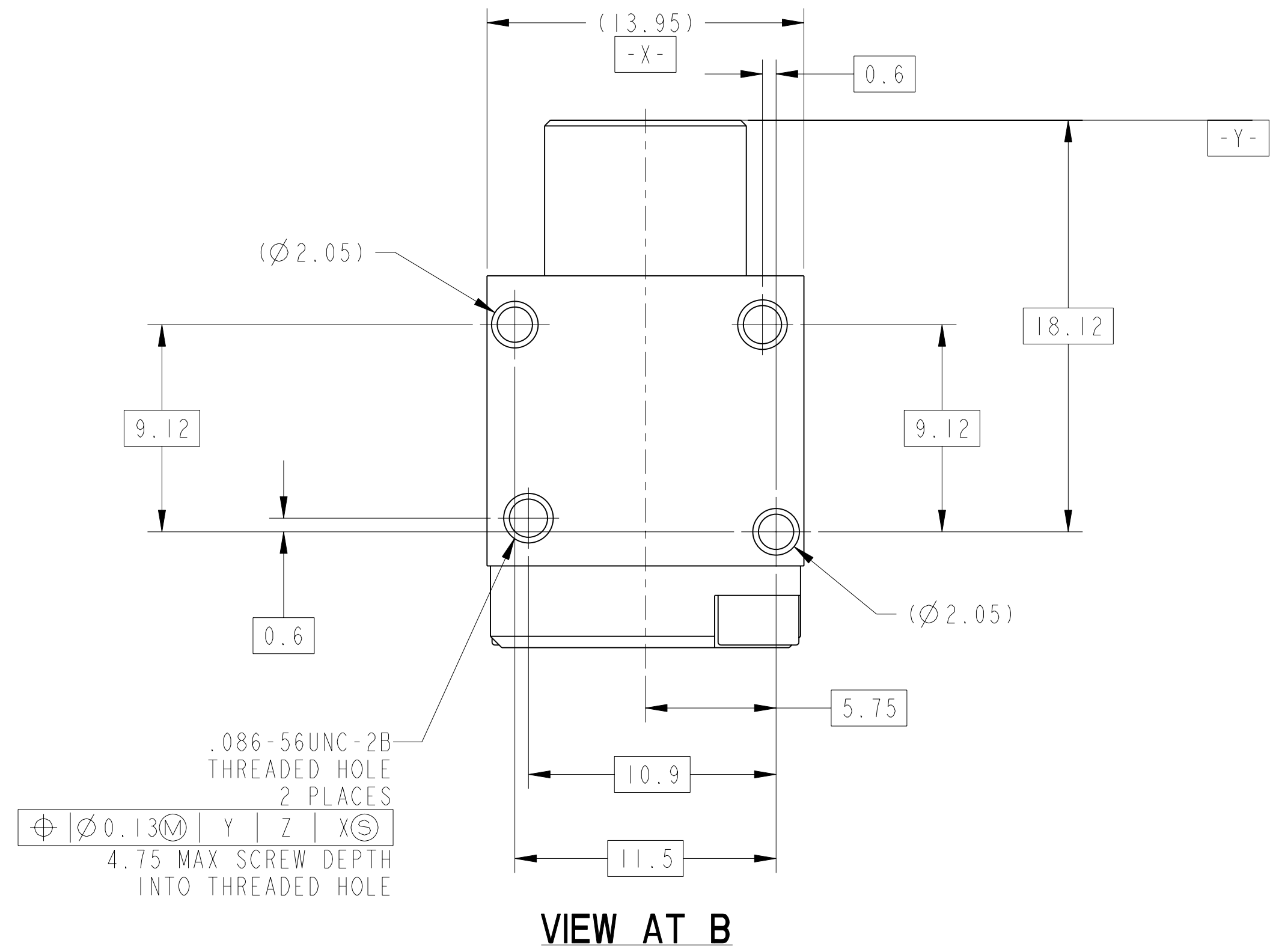
UNLESS OTHERWISE SPECIFIED	SPECIFICATIONS	POS	QTY	PART NUMBER	DESCRIPTION	NOTE
LINEAR DIMENSIONS ARE IN MILLIMETERS TOLERANCES: .XXXX = ±NA ANGLES= ±2° .XXX = ±NA .XX = ±.13 .X = ±.25 DIM. & TOL. PER ASME Y14.5M; DRM PER MIL-DTL-31000; OTHER Amphenol Sds. PER 9-3800 LEGENDS: =FLAG NOTE CALL OUT REFERENCE ONLY	MATERIAL SPEC.	APPROVALS		DATE	PARTS LIST	
	NONE	PREPARED BY R. CHAPMAN			AMPHENOL CORPORATION 40-60 DELAWARE AVENUE SIDNEY, N.Y. 13838	
PROCESS SPEC.		ENGINEER IN CHARGE E. HICKEY		03-Apr-18	CONNECTOR, FIBER OPTIC, MODULE, 1 MT SPECIAL (VITA 66.4 ENVELOPE)	
9-3895 9-3856-5		DESIGN MANAGER R. SELFRIDGE			SIZE C CAGE CODE 77820 DOCUMENT NO. 10-504637-012 REV. PA1	
		DESIGN ACTIVITY GROUP BLP			SCALE: 3.0 REF: 10-504637-008 SHEET 1 OF 3	
		THIRD ANGLE PROJECTION				



SHEET 1 OF 3

10-504637-012

REV. PA1



5. RETAINER SCREWS TO BE TIGHTENED TO A TORQUE OF 2 -3 IN-LBS. RETAINER SHOULD BE BOTTOMED ON CONNECTOR BODY.
4. INSERT CAVITY IS FOR A FIBER OPTIC MT FERRULE PER IEC 61754-5 MT FERRULES AND ASSOCIATED RIBBON CABLE ARE NOT PART OF THIS ASSEMBLY.
3. FOR CONNECTOR INSTALLATION ILLUSTRATION SEE SHEET 3.
2. FOR MATING BACKPLANE CONNECTOR ASSEMBLY, SEE DRAWING 10-504639-010.
1. BLACK INK STAMP "AMPH 77820" PART NUMBER AND DATE CODE ON INDICATED SURFACE PER 9-3856-5. DATE CODE PER 9-3895. CHARACTERS TO BE 1.6±.51 (.062±.005 INCH). HIGH. ADDITIONAL INFORMATION MAY BE REQUESTED BY PURCHASE ORDER. STAMPING CAN BE ON BOTH SIDES OF PART.

MATERIALS AND FINISHES

COMPONENT	MATERIAL/ FINISH
MAIN BODY	BODY - MATERIAL - ALUM. ALLOY PER AMS 4150 FINISH - CHROMATE TREATMENT PER MIL-C-5541, CL 3 HELICAL INSERTS - STAINLESS STEEL 304 SERIES PASSIVATED
MT RETAINER	BODY - MATERIAL - ALUM. ALLOY PER AMS 4150 FINISH - CHROMATE TREATMENT PER MIL-C-5541, CL 3 SCREW - STAINLESS STEEL 300 SERIES PASSIVATED

THE USE OF THIS DOCUMENT IS UNLIMITED.
HOWEVER, DOCUMENTS REFERENCED HEREON
MAY CONTAIN LIMITED RIGHTS DATA.

SIZE C	CAGE CODE 77820	DOCUMENT NO. 10-504637-012	REV. PA1
SCALE: 3.0	REF. 10-504637-008	SHEET 2 OF 3	

4

3

2

10-504637-012

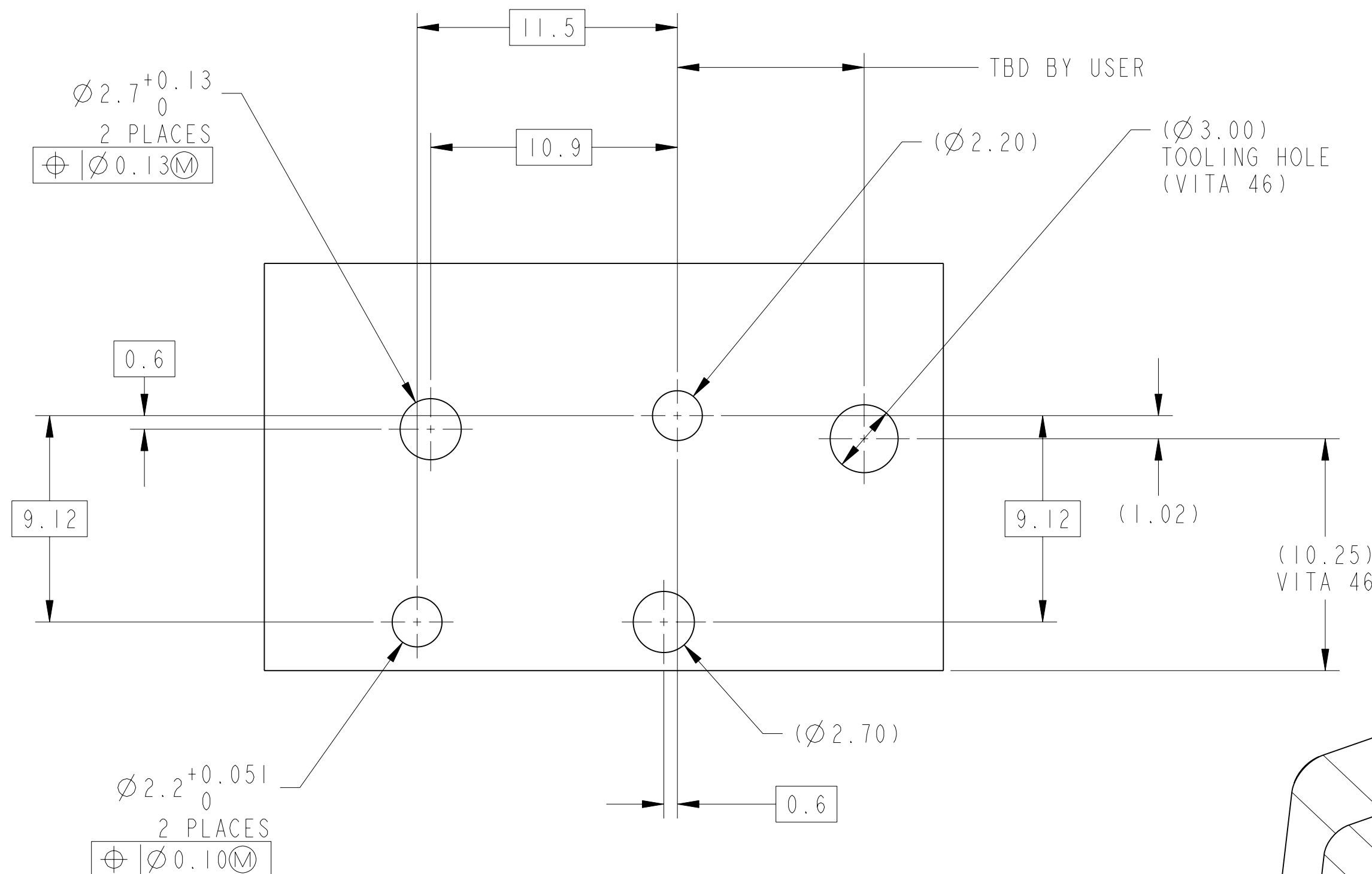
SHEET 3 OF 3

REV. PA1

C

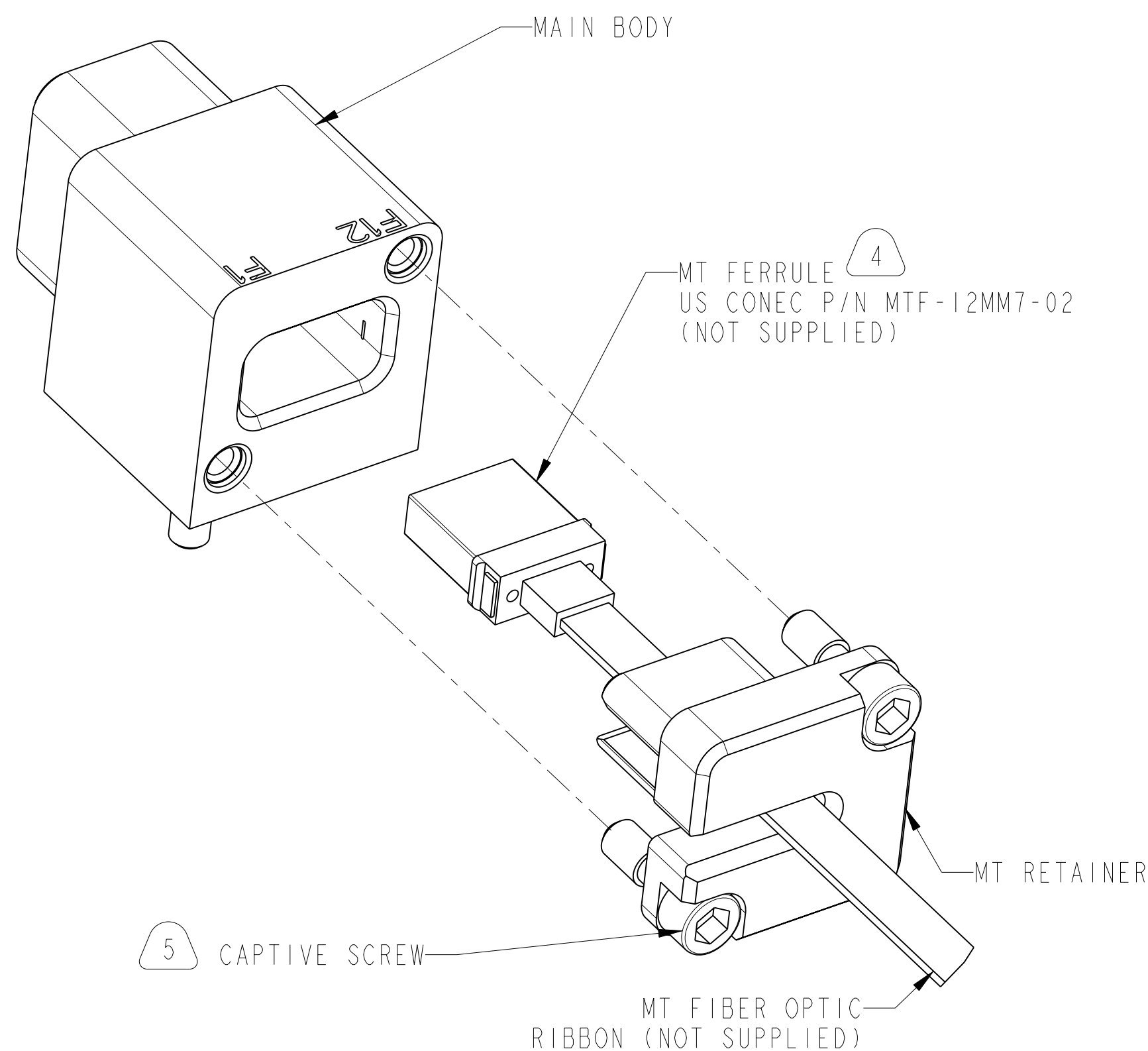
B

A



**SUGGESTED MODULE PCB
INTERFACE DIMENSIONS**

SCALE 5.000



**REAR EXPLODED
ASSEMBLY VIEW**

SCALE 4.000

THE USE OF THIS DOCUMENT IS UNLIMITED.
HOWEVER, DOCUMENTS REFERENCED HEREON
MAY CONTAIN LIMITED RIGHTS DATA.

SIZE C	CAGE CODE 77820	DOCUMENT NO. 10-504637-012	REV. PA1
SCALE: 3.0	REF. 10-504637-008	SHEET 3 OF 3	

3

2

1

D

C

REV. PA1

SHEET 3 OF 3

10-504637-012

A