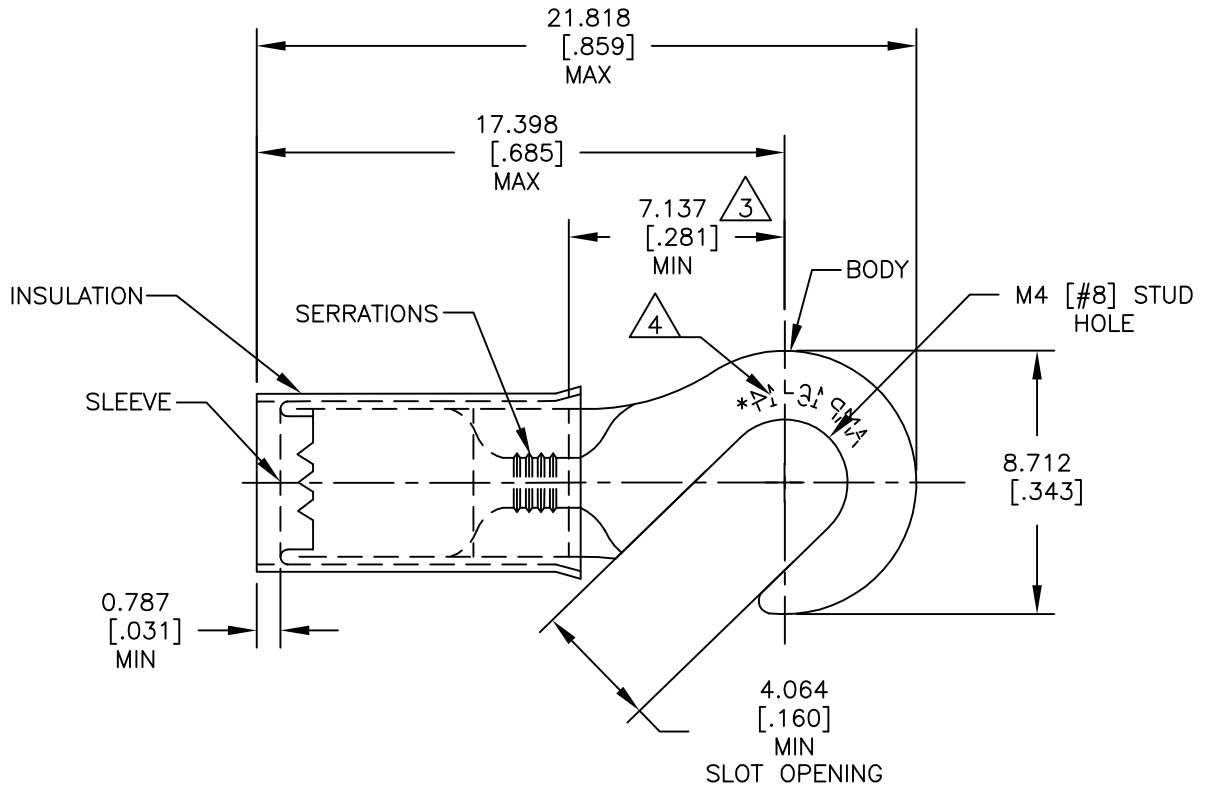


REVISIONS				
P	LTR	DESCRIPTION	DATE	APVD
	F1	REDRAWN PER ECO-17-007400	15DEC2017	RS DR

<b>AMP</b> WIRE RANGE	Listed FILE E13288	LR7189 Certified
16-14 AWG SOLID OR STRANDED	16-14 AWG SOLID OR STRANDED	16-14 AWG SOLID OR STRANDED



1 FOR  $\varnothing 2.921[\varnothing.115]$  TO  $\varnothing 4.318[\varnothing.170]$  WIRE INSULATION.

2 BODY MATERIAL THICKNESS:  $0.787 \pm 0.051[.031 \pm .002]$

APPLIES FROM EDGE OF METAL WIRE BARREL TO CENTER OF STUD HOLE.

STAMP AMP 16-14\* APPROX AS SHOWN.

MATERIAL:  
BODY & SLEEVE: COPPER PER ASTM B152  
INSULATION: NYLON

FINISH:  
BODY & SLEEVE: TIN PLATE PER ASTM B545  
INSULATION: COLOR-BLUE.

5000	ON TAPE	2-320306-1
1000	LOOSE PIECE	320306
QTY	PACKAGE TYPE	PART NO

RELEASED FOR PUBLICATION

ALL RIGHTS RESERVED.

THIS DRAWING IS UNPUBLISHED.

© COPYRIGHT - TE Connectivity

DIMENSIONS: mm [INCHES]	DWN RAVI S	15DEC2017	MATERIAL		FINISH	
	CHK ROHDE DANIEL F	15DEC2017	TE Connectivity NAME WIRE TERMINAL, P.I.D.G - HOOK, WIRE SIZE: 16-14			
TOLERANCES UNLESS OTHERWISE SPECIFIED:	APVD ROHDE DANIEL F	15DEC2017				
0 PLC ± -	PRODUCT SPEC	UL 486 A-B	SIZE	CAGE CODE	DRAWING NO	RESTRICTED TO
1 PLC ± -	APPLICATION SPEC	114-2157	A4	00779	320306	-
2 PLC ± -	WEIGHT	-	CUSTOMER DRAWING			
3 PLC ± 0.127[.005]			SCALE	4:1	SHEET	1 OF 1
4 PLC ± -					REV	F1
ANGLES ± 5°						