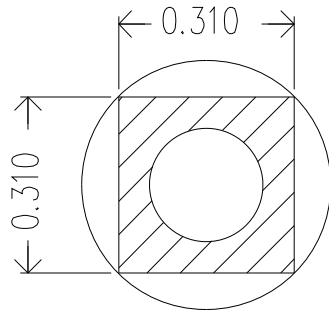
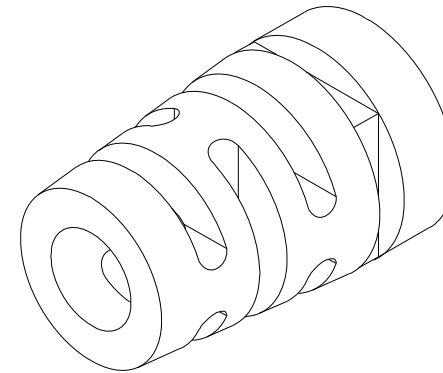
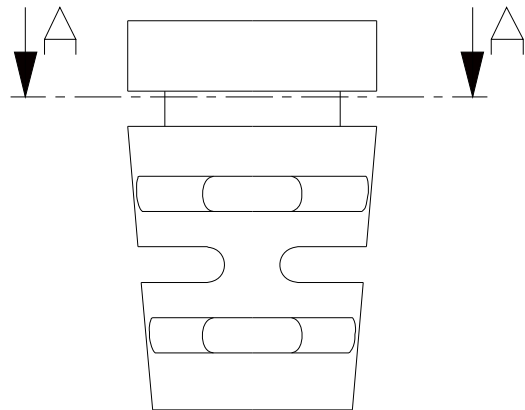
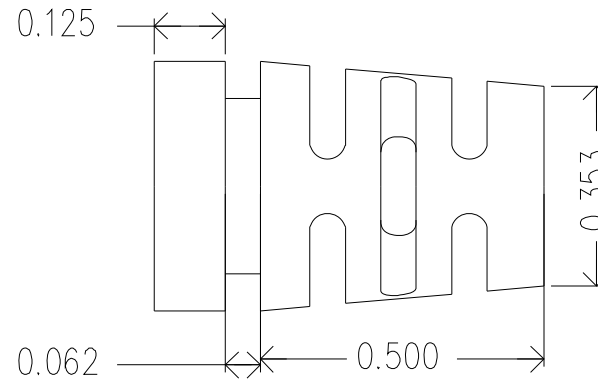
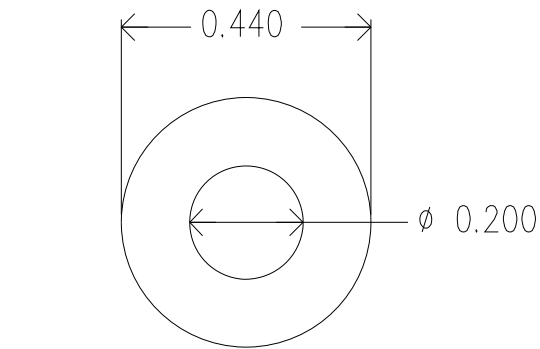


ZONE		REV.	DESCRIPTION	DATE	APPROVED



A-A

**ISC ENGINEERING**  
**CONTROLLED COPY**  
 Rich Fierro 07/22/2016

Mold Material: ISC P/N: 5000214, PVC, M1472, RoHS, Black

Dimensions are subject to change.  
 PROPRIETARY AND CONFIDENTIAL  
 THE INFORMATION CONTAINED IN THIS DRAWING IS THE SOLE PROPERTY OF ISC ENGINEERING. ANY REPRODUCTION IN PART OR AS A WHOLE WITHOUT THE WRITTEN PERMISSION OF ISC ENGINEERING IS PROHIBITED.

		DIMENSIONS ARE IN INCHES		NAME	DATE	ISC Engineering 4351 Schoefer Ave, Chino, CA 91710 Ph: 909-596-3315 Fax: 909-596-3335 www.iscengineering.com www.overmoldtooling.com	
		TOLERANCES:		DRAWN	R FIERRO		08/06/03
		FRACTIONAL ±		CHECKED			
		ANGULAR: MACH ±	BEND ±	ENG APPR			
		TWO PLACE DECIMAL ±	THREE PLACE DECIMAL ±	MFG APPR			
		MATERIAL	--	Q.A.			
		FINISH	--	COMMENTS:		1461080-.200-.062-.310X.310-.440-0	
NEXT ASSY	USED ON			SCALE:	DWG. NO.	REV.	
APPLICATION		DO NOT SCALE DRAWING		A	1467104		
				SCALE: 5:1	WEIGHT:	SHEET 1 OF 1	