

4

3

2

1

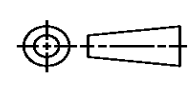
THIS DRAWING IS UNPUBLISHED. RELEASED FOR PUBLICATION
© COPYRIGHT ALL RIGHTS RESERVED.

| LOC | DIST | REVISIONS | | | |
|-----|------|---------------|---------|-----|------|
| P | LTR | DESCRIPTION | DATE | DWN | APVD |
| | A1 | ECR-18-005440 | 13APR18 | GK | SD |
| | | | | | |
| | | | | | |

REPLACED BY OCEAN STYLE APPLICATOR PART NUMBER 2836715-1

FOR REPLACEMENT PARTS FOR APPLICATOR 1852788
REFER TO ADDITIONAL PAGE(S). SPARE PARTS KIT (IF LISTED)
WILL REMAIN AVAILABLE.

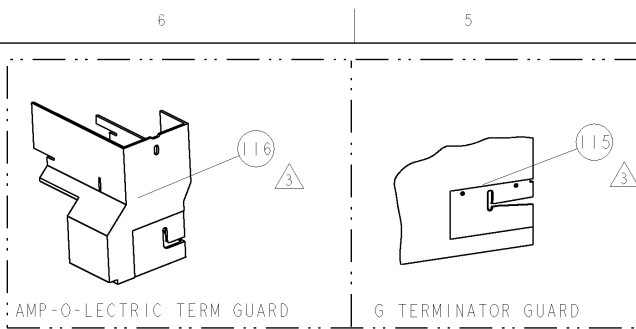
THE REPLACEMENT OCEAN STYLE APPLICATOR HAS THE
SAME TERMINATOR/PRESS INTERFACE AS APPLICATOR
1852788

| | | | | | |
|---|--|------------------|--------------------------|------------|---------------|
| THIS DRAWING IS A CONTROLLED DOCUMENT. | | DWN | GOPALAKRISHNA HV | | |
| DIMENSIONS: | | CHK | GOPALAKRISHNA HV | | |
|  | | APVD | STOUGH DALE | | |
| | | PRODUCT SPEC | NAME | | |
| TOLERANCES UNLESS OTHERWISE SPECIFIED: | | APPLICATION SPEC | SIDE FEED HDM APPLICATOR | | |
| 0 PLC ± | | SIZE | CAGE CODE | DRAWING NO | RESTRICTED TO |
| 1 PLC ± | | A3 | | ©- 1852788 | |
| 2 PLC ± | | CUSTOMER DRAWING | | SCALE | SHEET 1 OF 2 |
| 3 PLC ± | | | | | REV A1 |
| 4 PLC ± | | | | | |
| ANGLES ± | | | | | |
| MATERIAL | | | | | |
| FINISH | | | | | |
| | | | | | |



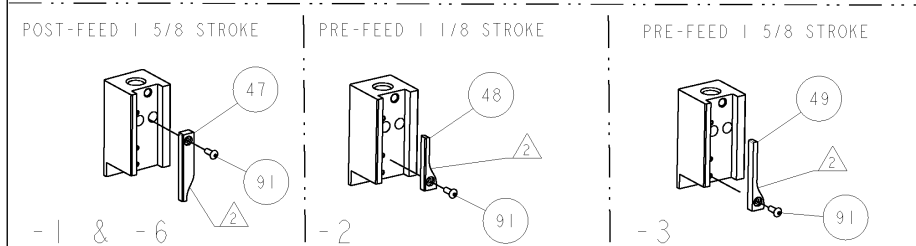
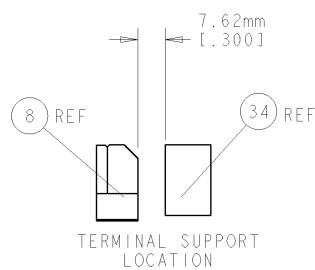
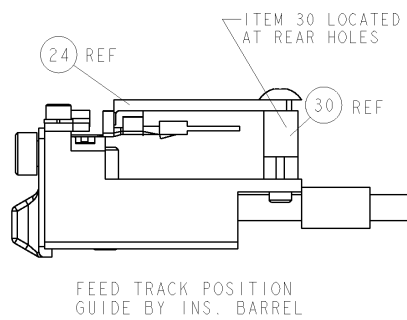
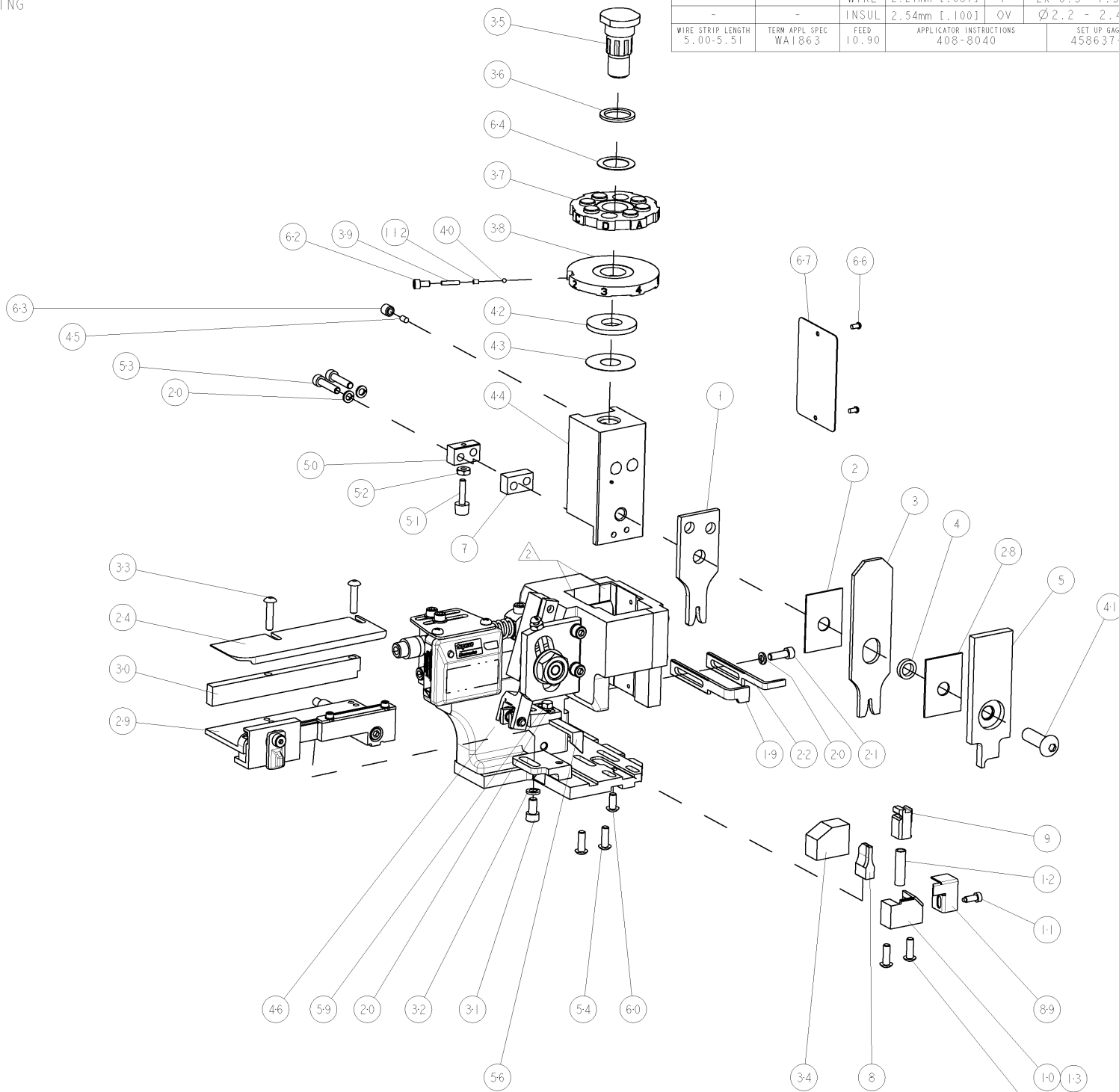
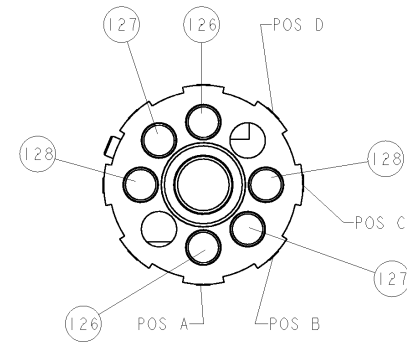
| PART NUMBER | REV | FIRST USED | POWER UNIT | FEED TYPE | DESCRIPTION |
|-------------|-----|------------|---------------|-----------|--------------------|
| 1852788-1 | A | 122500-1 | LEADMAKER | POST FEED | CUTS CARRIER |
| 1852788-2 | A | 565435-5 | BENCH MODEL K | PRE FEED | CUTS CARRIER |
| 1852788-3 | A | 354500-1 | BENCH MODEL G | PRE FEED | CUTS CARRIER |
| 1852788-6 | A | 122500-1 | LEADMAKER | POST FEED | CONTINUOUS CARRIER |
| 7-1852788-7 | A | - | - | - | SPARE PARTS |

- △ RECOMMENDED SPARE PARTS
- △ GREASE LIGHTLY
- △ GUARD MUST BE IN PLACE WHEN OPERATING APPLICATOR IN A BENCH MACHINE



| TERMINAL NAME: 1.5 SYSTEM CONN. | | YAZAKI CRIMP HEIGHT | | WIRE SIZE | |
|---------------------------------|----------------|---------------------|------------------------------------|----------------|----------------|
| TE PN | YAZAKI | PAD STR | CRIMP HEIGHT | WIRE SIZE | |
| 1572461-1 | 7114-4104-02 | | | 1.5mm2 | |
| - | - | A | 1.40mm±.05/-0.05[.055+.002/-0.002] | 1.5mm2 | |
| - | - | B | 1.35mm±.05/-0.05[.053+.002/-0.002] | 0.35 x 0.75mm2 | |
| - | - | C | 1.30mm±.05/-0.05[.051+.002/-0.002] | 0.50 x 0.75mm2 | |
| - | - | D | | 2 x 0.50mm2 | |
| | | CRIMP | SIZE | TYPE | RANGE |
| - | - | - | 2.21mm [.087] | F | 2X 0.5- 1.5mm2 |
| - | - | - | 2.54mm [1.00] | OV | ∅2.2 - 2.4mm |
| WIRE STRIP LENGTH | TERM APPL SPEC | FEED | APPLICATOR INSTRUCTIONS | | SET UP GAGE |
| 5.00-5.51 | WA1863 | 10.90 | 408-8040 | | 458637-1 |

| LOC | DIST | REVISIONS | | | |
|-----|------|-----------|-------------|-----------|-------|
| A | 66 | REV | DESCRIPTION | DATE | APPV |
| | | A | RELEASED | 12DEC2008 | LG TE |



| | | | | | | | | |
|---|---|---|-----|---|-----|-------------|---------------------------------------|-----|
| - | 2 | 2 | 2 | 2 | - | 2-354779-8 | PIN, WIRE DISC, .3130 | 128 |
| - | 2 | 2 | 2 | 2 | - | 2-354779-4 | PIN, WIRE DISC, .3110 | 127 |
| - | 2 | 2 | 2 | 2 | - | 2-354779-0 | PIN, WIRE DISC, .3090 | 126 |
| - | - | - | REF | - | ... | 455749-1 | GUARD WINDOW | 116 |
| - | - | - | REF | - | ... | 679532-1 | INSERT, GUARD | 115 |
| - | 1 | 1 | 1 | 1 | - | 690603-1 | SPRING ASSIST AMP-O-MATOR APPLICATOR | 112 |
| - | 1 | 1 | 1 | 1 | - | 1-21002-7 | SCR, BTN SKT HD CAP 6-32 X .375 | 91 |
| - | 1 | 1 | 1 | 1 | - | 318563-1 | GUARD, FRONT CHIP | 89 |
| - | 1 | 1 | 1 | 1 | - | 4088040 | SF APPL INST 408-8040 | 72 |
| - | 1 | 1 | 1 | 1 | - | 217238-1 | GENERAL INSTRUCTION PKG | 71 |
| - | 1 | 1 | 1 | 1 | - | 461264-1 | PLATE, IDENTIFICATION | 67 |
| - | 2 | 2 | 2 | 2 | - | 21017-2 | SCREW, DRIVE | 66 |
| - | 1 | 1 | 1 | 1 | - | 986950-1 | WASHER, FLAT PRECISION | 64 |
| - | 1 | 1 | 1 | 1 | - | 21009-2 | SCR, SET, SELF LOCKING 1/4-20 X .250 | 63 |
| - | 1 | 1 | 1 | 1 | - | 23030-1 | SCR, SKT HD CAP 6-32 X .25 | 62 |
| - | 1 | 1 | 1 | 1 | - | 22733-8 | SCR, BHSC, SELF-LOCKING, 8-32 X .375 | 60 |
| - | 1 | 1 | 1 | 1 | - | 2-22603-0 | SCR, HEX HD CAP 8-32 X .312 | 59 |
| - | 1 | 1 | 1 | 1 | - | 458537-2 | PAWL, FEED | 56 |
| - | 4 | 4 | 4 | 4 | - | 2-21002-2 | SCR, BTN SKT HD CAP 8-32 X .500 | 54 |
| - | 2 | 2 | 2 | 2 | - | 2-21000-9 | SCR, SKT HD CAP 8-32 X .750 | 53 |
| - | 1 | 1 | 1 | 1 | - | 21018-5 | NUT, HEX, REG 6-32 | 52 |
| - | 1 | 1 | 1 | 1 | - | 811242-2 | BUMPER, HOLD DOWN | 51 |
| - | 1 | 1 | 1 | 1 | - | 690753-1 | SPACER, TONKER | 50 |
| - | - | - | - | - | ... | 690602-6 | CAM, PRE FEED, 1 5/8 | 49 |
| - | - | - | - | - | ... | 690602-5 | CAM, PRE FEED, 1 1/8 | 48 |
| - | 1 | 1 | 1 | 1 | - | 690501-4 | CAM, POST-FEED 1 5/8 | 47 |
| - | 1 | 1 | 1 | 1 | - | 459456-1 | APPL. BASIC SUB ASSY (SIDE WISE MOCA) | 46 |
| - | 1 | 1 | 1 | 1 | - | 690191-1 | PLUG, NYLON | 45 |
| - | 1 | 1 | 1 | 1 | - | 455673-1 | RAM, SIDE FEED | 44 |
| - | 1 | 1 | 1 | 1 | - | 690125-1 | SHIM SUB-ASSY | 43 |
| - | 1 | 1 | 1 | 1 | - | 690124-1 | WASHER, RAM (.115) | 42 |
| - | 1 | 1 | 1 | 1 | - | 7-21002-9 | SCR, BTN SKT HD CAP 5/16-24 X 1.00 | 41 |
| - | 1 | 1 | 1 | 1 | - | 23241-6 | BALL, STEEL | 40 |
| - | 1 | 1 | 1 | 1 | - | 690170-1 | SPRING, COMPRESSION | 39 |
| - | 1 | 1 | 1 | 1 | - | 690142-1 | DISC, INSULATION | 38 |
| - | 1 | 1 | 1 | 1 | - | 354777-1 | WIRE DISC, ASSEMBLY | 37 |
| - | 1 | 1 | 1 | 1 | - | 22480-5 | SPRING, COMPRESSION | 36 |
| - | 1 | 1 | 1 | 1 | - | 690212-1 | POST, RAM | 35 |
| - | 1 | 1 | 1 | 1 | - | 1-690786-4 | TERMINAL SUPPORT | 34 |
| - | 2 | 2 | 2 | 2 | - | 2-21002-4 | SCR, BTN SKT HD CAP 8-32 X .750 | 33 |
| - | 1 | 1 | 1 | 1 | - | 21024-5 | WASHER, SPRG LOCK, REG NO 10 | 32 |
| - | 1 | 1 | 1 | 1 | - | 3-21000-4 | SCR, SKT HD CAP 10-32 X .375 | 31 |
| - | 1 | 1 | 1 | 1 | - | 1320908-1 | SPACER, STRIP GUIDE | 30 |
| - | 1 | 1 | 1 | 1 | - | 1633091-3 | ASSEMBLY, STRIP GUIDE | 29 |
| - | 1 | 1 | 1 | 1 | - | 1-455888-0 | SPACER, CRIMPER | 28 |
| - | 1 | 1 | 1 | 1 | - | 1320928-1 | PLATE, STRIP GUIDE | 24 |
| - | 1 | 1 | 1 | 1 | - | 690472-2 | STRIPPER | 22 |
| - | 1 | 1 | 1 | 1 | - | 2-21000-7 | SCR, SKT HD CAP 8-32 X .500 | 21 |
| - | 4 | 4 | 4 | 4 | - | 21024-4 | WASHER, SPRG LOCK, REG NO 8 | 20 |
| - | - | - | - | - | ... | 691353-1 | STRIPPER | 19 |
| - | 1 | 1 | 1 | 1 | - | 679625-1 | SHEAR HOLDER, FRONT (NO CUT) | 13 |
| - | 1 | 1 | 1 | 1 | - | 3-22280-3 | SPRING, COMPRESSION | 12 |
| - | 1 | 1 | 1 | 1 | - | 690461-1 | STOP, SHEAR | 11 |
| - | - | - | - | - | ... | 690459-1 | SHEAR HOLDER, FRONT | 10 |
| - | 1 | 1 | 1 | 1 | - | 454276-1 | FLOATING SHEAR, FRONT | 9 |
| - | 1 | 1 | 1 | 1 | - | 9-1633535-1 | ANVIL, COMBINATION | 8 |
| - | 1 | 1 | 1 | 1 | - | 6-240641-8 | SPACER | 7 |
| - | - | - | - | - | ... | - | - | 6 |
| - | 1 | 1 | 1 | 1 | - | 3-455889-6 | DEPRESSOR, SHEAR | 5 |
| - | 1 | 1 | 1 | 1 | - | 238011-9 | BLOCK, CRIMPER SPACER | 4 |
| - | 1 | 1 | 1 | 1 | - | 4-854830-0 | CRIMPER, INSULATION SPECIAL | 3 |
| - | 1 | 1 | 1 | 1 | - | 455888-7 | SPACER, CRIMPER | 2 |
| - | 1 | 1 | 1 | 1 | - | 3-1490019-7 | CRIMPER, WIRE PREMIUM | 1 |

| ITEM NO | PART NO | DESCRIPTION | | | | | |
|---------|---------|-------------|----|----|-----|--|--|
| -77 | -6 | -3 | -2 | -1 | U/M | | |

| | | | | | |
|----------|------|----|------|----|------|
| APPROVED | DATE | BY | DATE | BY | DATE |
| | | | | | |