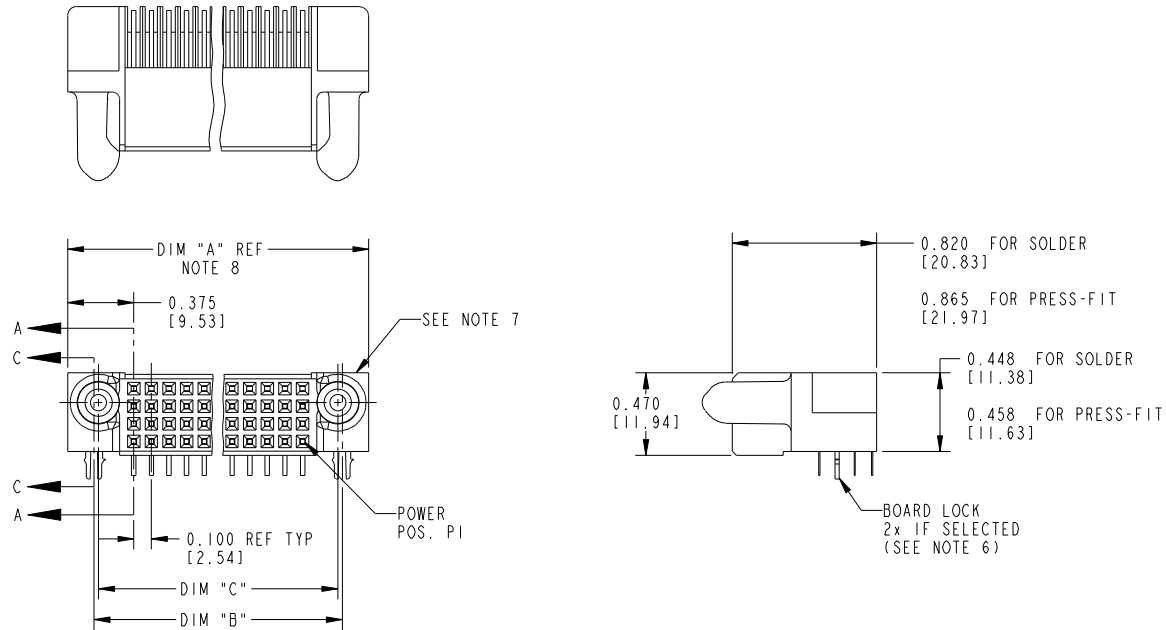


Tous droits strictement réservés. Reproduction ou communication à des tiers interdite, sous quelque forme que ce soit sans autorisation écrite du propriétaire. Propriété de c FCI. Droits de reproduction FCI.

All rights strictly reserved. Reproduction or issue to third parties in any form whatever is not permitted without written authority from the proprietor. Property of FCI. Copyright FCI.



PRODUCT NUMBER
51968-A00CCC00EF_..
SEE NOTE 1



THIS FILE WAS ORIGINALLY CREATED IN THE PRO ENGINEER ENVIRONMENT AND ANY FUTURE REVISIONS TO THIS FILE MUST BE MADE IN THE PRO ENGINEER ENVIRONMENT

mat'l code SEE NOTE 2				tolerances unless otherwise specified		CUSTOMER COPY		www.fciconnect.com	
ltr	ecn no.	dr	date	linear	.XX±.01/.X±.3	projection		title	
A	V04-0660	TAB	06/23/04		.XXX±.005/.XX±.13			RIGHT ANGLE RECEPTACLE w/GUIDE PIN SIGNAL	
B	DG07-0080	RYAN	03/09/07		.XXX±.0020/.XXX±.051			product family	
C	DG08-0239	JC	09/12/08	angles	0°±2°	INCH / MM		PwrBlade	
				dr	T. BRUNGARD 06/23/04	scale		code	
				enr	M. GRAY 06/23/04	1:1		213	
				chr	M. GRAY 06/23/04	A		size	
				appd	M. GRAY 06/23/04			dwg no	
sheet index				revision sheet	C 1	C 2	C 3	51968	
								SHEET 1 OF 3	

form no. 7530-001-103

cage code 22526

Tous droits strictement réservés. Reproduction ou communication à des tiers interdite, sous quelque forme que ce soit sans autorisation écrite du propriétaire. Propriété de c.FCI. Droits de reproduction FCI.



All rights strictly reserved. Reproduction or issue to third parties in any form whatever is not permitted without written authority from the proprietor. Property of FCI. Copyright FCI.

PRODUCT NUMBER
51968-A00CCC00EF_
SEE NOTE 1

CONNECTOR NOTES

1. PRODUCT NUMBER CODE:  
51968 - A 00 CCC 00 E F LF  
  - W/O THIS SUFFIX: 100u"/2.54um SnPb ON PCB INTERFACE
  - WITH THIS SUFFIX: 78u"/2.00um Sn ON PCB INTERFACE
  - RETENTION TO PCB (NOTE 6)
  - TAIL OPTIONS (NOTE 5)
  - ALWAYS "00" (ZERO, ZERO)
  - NUMBER OF SIGNAL CONTACTS (NOTE 4)
  - ALWAYS "00" (ZERO, ZERO)
  - PLATING (NOTE 3)
  - BASE NUMBER
2. HOUSING MATERIAL: GLASS FILLED V-O HIGH TEMP THERMO PLASTIC.  
SIGNAL CONTACT MATERIAL: COPPER ALLOY
3. PLATING OPTION:  
I = SEE PRINT 10064183 FOR PLATING SPEC OF 51968-100CCC00EF AND 51968-100CCC00EFLF
4. SIGNAL CONTACTS, 004 TO 148 AVAILABLE FOR SOLDER TO BOARD.  
020 TO 148 AVAILABLE FOR PRESS-FIT TO BOARD.
5. TAIL OPTIONS:  
A = .135 ± .010 [3.43 ± .25] SOLDER TO BOARD  
B = .090 + .005 / - .010 [2.29 +0.13 / -0.25] SOLDER TO BOARD  
C = .154 ± .010 [3.91 ± 0.25] PRESS-FIT TO BOARD

DIM	LENGTH FORMULAS (SEE NOTE 8)
DIM "A"	.100 [2.54] x (CCC/4) + .650 [16.51] (NOTE 8)
DIM "B"	.100 [2.54] x (CCC/4) + .350 [8.89]
DIM "C"	.100 [2.54] x (CCC/4) + .300 [7.62]
DIM "D"	.100 [2.54] x (CCC/4) + .680 [17.27]

6. RETENTION TO PCB OPTIONS:  
A = BOARD LOCK (REQUIRES .098 + .002 / -.001 [2.49 +0.05 / -0.03] THRU HOLE IN PCB)  
MOUNTING FOOT HEIGHT: .220 [5.59]  
\*\*NOT AVAILABLE FOR PRESS-FIT\*\*  
B = .150 [3.81] THRU HOLE (REQUIRES .158 ± 0.003 [4.01 ± 0.08] THRU HOLE IN PCB).  
MOUNTING FOOT HEIGHT .160 [4.06]  
\*\*ALWAYS AVAILABLE FOR PRESS-FIT\*\*
7. MANUFACTURE'S NAME, P/N, AND DATE CODE TO APPEAR ON THIS SURFACE.
8. THE MAXIMUM OVERALL LENGTH (DIM A) OF A PART IS 8.00 [203.2]
9. PRODUCT SPECIFICATION GS-12-149
10. APPLICATION SPECIFICATION BUS-20-067.
11. FOR PRESS-FIT CONNECTORS USE FCI CAM TOOL 430140-XXX TO APPLY CONNECTOR TO PCB.

PCB NOTES:

12. ALL DIMENSIONS ARE BASIC UNLESS OTHERWISE SPECIFIED.
13. ALL THROUGH HOLES ARE LOCATED WITH A TRUE POSITION OF .004 [0.10]
14. ALL HOLE DIAMETERS ARE FINISHED HOLE SIZE.
15.  $\varnothing 0.0453 \pm .001$  [1.151 ± 0.02] DRILLED HOLES PLATED WITH 0.0003 [0.007] MIN SnPb OR Sn OVER 0.001 [1.03] TO .003 [0.08] Cu PLATING TO ACHIEVE A .040 ± .003 [1.02 ± 0.08] HOLE.
16. A SYMBOL WILL BE NEXT TO ANY DIMENSION, VIEW, OR NOTE WHICH HAS BEEN MODIFIED WITH THE CURRENT DRAWING REVISION.

THIS FILE WAS ORIGINALLY CREATED IN THE PRO ENGINEER ENVIRONMENT AND ANY FUTURE REVISIONS TO THIS FILE MUST BE MADE IN THE PRO ENGINEER ENVIRONMENT

mat'l code				tolerances unless otherwise specified		CUSTOMER COPY		FCI www.fciconnect.com	
ltr	ecr no.	dr	date	linear	.XX±.01/.X±.3	projection		title RIGHT ANGLE RECEPTACLE w/GUIDE PIN SIGNAL	
c					.XXX±.005/.XX±.13			product family PwrBlade	code 213
				angles	.XXX±.0020/.XXX±.051	INCH / MM	product size	dwg no 51968	
				dr	0° ± 2°	scale	SHEET 2 OF 3		
				enr	T. BRUNGARD 06/23/04	1:2	cage code 22526		
				chr	M. GRAY 06/23/04				
				appd	M. GRAY 06/23/04				
sheet index	revision sheet								

form no. 7530-001-103

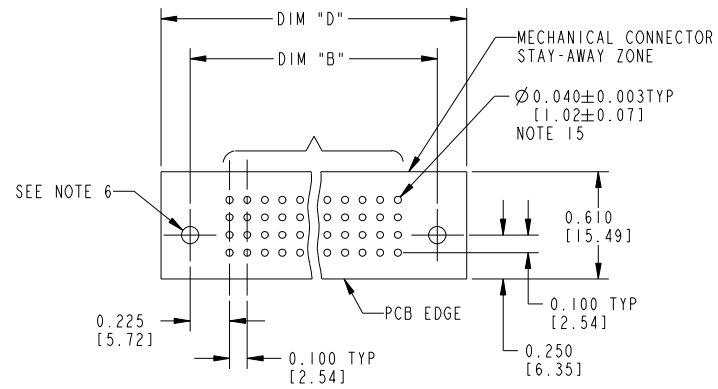
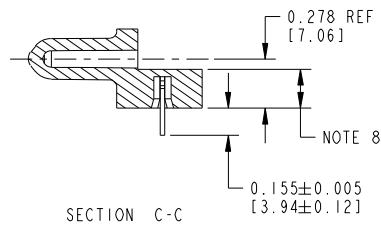
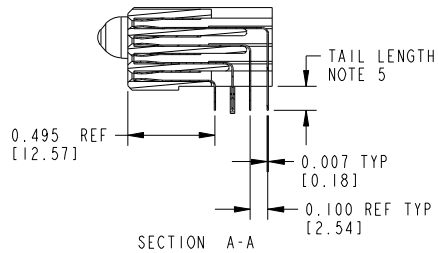
cage code 22526

Tous droits strictement réservés. Reproduction ou communication à des tiers interdite, sous quelque forme que ce soit sans autorisation écrite du propriétaire. Propriété de c.FCI. Droits de reproduction FCI.



All rights strictly reserved. Reproduction or issue to third parties in any form whatever is not permitted without written authority from the proprietor. Property of FCI. Copyright FCI.

PRODUCT NUMBER  
51968-A00CCC00EF\_\_  
SEE NOTE 1



mat'l code				tolerances unless otherwise specified		CUSTOMER COPY		www.fciconnect.com	
ltr	ecn no.	dr	date	linear	.XX±.01/.X±.3		title		
c					.XXX±.005/.XX±.13		RIGHT ANGLE RECEPTACLE w/GUIDE PIN SIGNAL		
				angles	.XXX±.0020/.XXX±.051		product family		
				dr	0°±2°	INCH / MM	PwrBlade		code
				enr	T. BRUNGARD 06/23/04	scale 1:1	size	213	
				chr	M. GRAY 06/23/04		dwg no	51968	
				appd	M. GRAY 06/23/04		SHEET 3 OF 3		
sheet index	revision sheet								

form no. 7530-001-103

cage code 22526