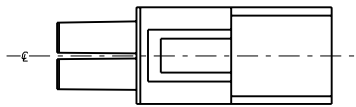
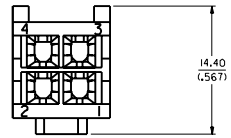
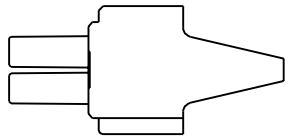
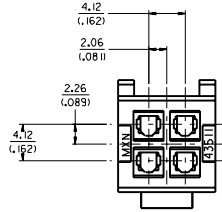
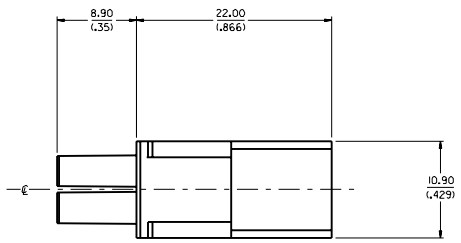


**NOTES:**

1. MATERIAL: POLYESTER (PBT), UN-FILLED, UL 94V-0. COLOR: BLACK
2. FINISH: NONE
3. PRODUCT SPEC.: PS-43510-002
4. ALL DIMENSIONS SHOWN FOR REFERENCE ONLY.
5. USES STANDARD 5556 AND 44485 MINI-FIT JR. FEMALE CRIMP TERMINALS.
6. PART MATES WITH 43514-0001 PLUG PDD.
7. PART TO BE USED WITH 43838-0\*\*\* RECEPTACLE SHROUD.  
(SEE SHROUD DRAWING FOR ASSEMBLY INFORMATION)



ADDED LEAD-INS EC NO. UCR 1999-0594 DRW/POL/GAR 99/03/11 CPM/COM/ERC 99/03/15 APPR/COM/ERC 99/02/15	QUALITY SYMBOLS MAJOR $\nabla$ 0 CRITICAL $\nabla$ 0	GENERAL TOLERANCES: (UNLESS SPECIFIED) mm INCH ±0.--- ±.--- ±0.--- ±.--- ±0.--- ±.--- ±0.--- ±.---	SCALE 4: 1 DESIGN UNITS <input checked="" type="checkbox"/> mm <input type="checkbox"/> INCH	DRAWN BY & DATE COMERC I 97/10/06 CHECKED BY & DATE COMERC I 97/10/06 APPROVED BY & DATE FRY 97/10/10	DIMENSIONS: <input checked="" type="checkbox"/> mm <input type="checkbox"/> INCH <input type="checkbox"/> mm ONLY	SHT 1 REV 1 REVISE ON CAD ONLY	
	CAD FILENAME S4351101.DGN	MATERIAL NO. 43511-0001	DRAWING NO. SD-43511-001	SHEET NO. 1 OF 1			
	DRAFT WHERE APPLICABLE MUST REMAIN WITHIN DIMENSIONS				THIS DRAWING CONTAINS INFORMATION THAT IS PROPRIETARY TO MOLEX INCORPORATED AND SHOULD NOT BE USED WITHOUT WRITTEN PERMISSION.		SIZE D
	TITLE: MINI FIT JR. RECEPTACLE, 4 CIRCUIT, DUAL ROW COMPODRE SYSTEM MOLEX INCORPORATED						