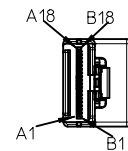
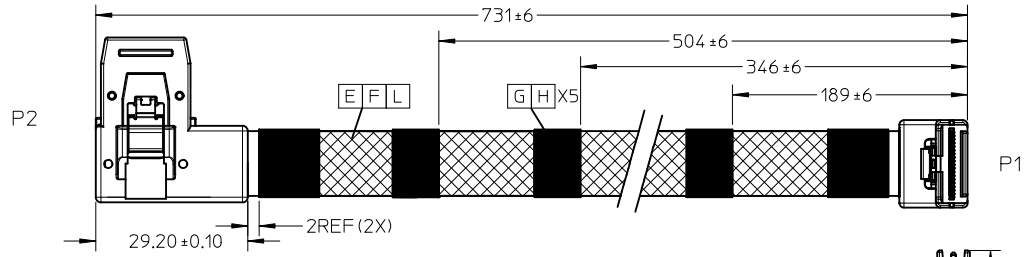
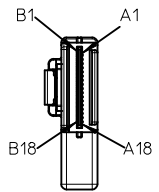


REVISIONS				
EC NO	DATE	REV	DESCRIPTION	CHANGER
NA	2010/06/10	A	INITIAL RELEASE	LUCKY
CY11-5360	2010/08/27	B	CHANGE CUSTOMER VERSION FROM 'A00' TO 'A01'(LABEL)	LUCKY



B C D I

BKPLN

A B D M

CNTRL

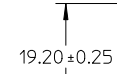
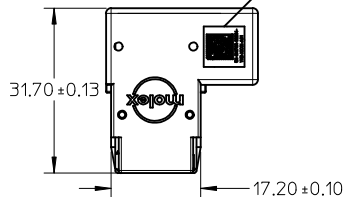
-25REF (2X)

15REF (3X)

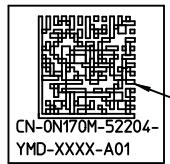
K

SEE NOTES 7

J



14.95±0.25

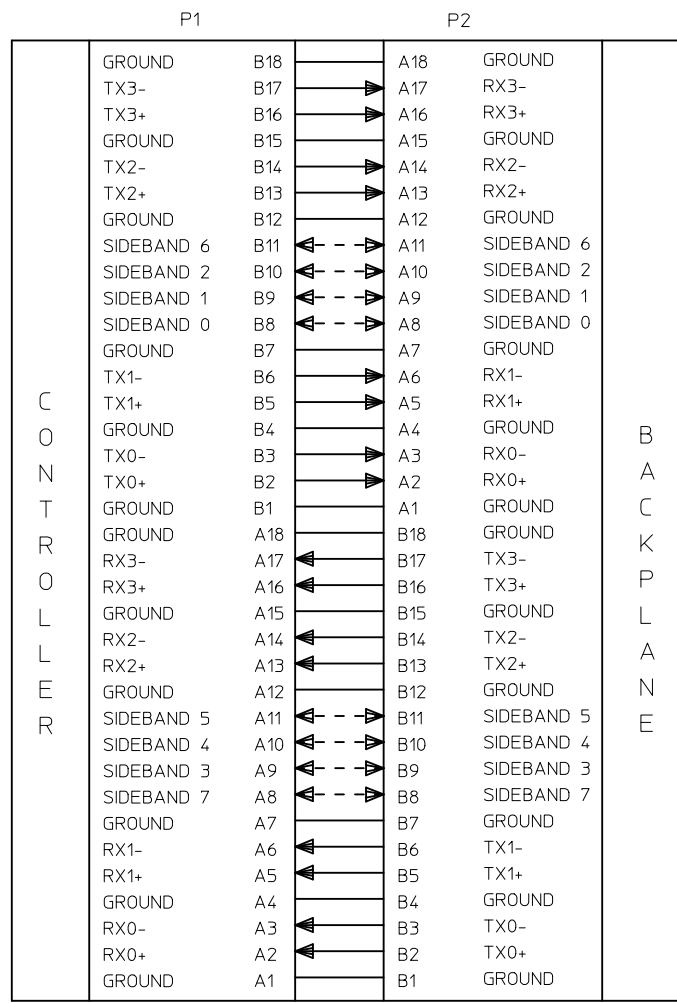


READING AS: CN0N170M52204YMDXXXXA01

LABEL FORMART DETAIL

IPASS™ IS A TRADEMARK OF MOLEX

ENTER DESCRIPTION EC NO: USY2011-0242 DRWN: ZYU CHKD: W.LUCKY APPR: BLAU	QUALITY SYMBOLS = 0 = 0	GENERAL TOLERANCES (UNLESS SPECIFIED)		DIMENSION STYLE MM ONLY	SCALE ---	DESIGN UNITS METRIC	THIRD ANGLE PROJECTION		
		4 PLACES ± --- ± --- 3 PLACES ± --- ± --- 2 PLACES ± --- ± --- 1 PLACE ± --- ± ---	mm INCH	DRAWN BY: ZYU DATE: 2010/10/11 CHECKED BY: W.LUCKY DATE: 2010/10/11 APPROVED BY: BLAU DATE: 2010/10/11	TITLE 36CKTIPASS RT ANG RT EXIT-RT ANG .731M				
		ANGULAR ± --- °		MATERIAL NO. 1110964002	MOLEX INCORPORATED				
		DRAFT WHERE APPLICABLE MUST REMAIN WITHIN DIMENSIONS		SIZE A3	THIS DRAWING CONTAINS INFORMATION THAT IS PROPRIETARY TO MOLEX INCORPORATED AND SHOULD NOT BE USED WITHOUT WRITTEN PERMISSION			DOCUMENT NO. SD-111096-4002	SHEET NO. 1 OF 3
		REV							



NOTE:
1. ALL SIGNAL GROUNDS ARE BUSSED IN PCB.

TM
IPASS IS A TRADEMARK OF MOLEX.

ITEM	DESCRIPTION	L (mm)	QTY.
M	lpass R/A Latch		1PCS
L	1P*30AWG;SHLD:FEP;BU:0.90*2.21MM;Twin-ax	710REF	8PCS
K	Blank label 5x10mm Thermal Transfer		2PCS
J	Blank Label 0.375"*0.375" Brady# B-423		1PCS
I	PCBfor lpass 36CKT R/A Right FR406		1PCS
H	HST F 10MM 125C (UL) BLK	A/R	5PCS
G	KUNJIE ACETATE CLOTH TAPE 12MM BLACK	A/R	5PCS
F	Braid sleeving OD:9.5mm Black HF	685REF	1PCS
E	8C*30AWG;TS:GY:P=1.0MM;UL2651	710REF	1PCS
D	PE G812 LDPE NATURAL		A/R
C	lpass Latach(Local vender)		1PCS
B	PBT POLYESTER 30% GF BLACK UL94V-0		A/R
A	PCB for 36ckt Latch Inside		1PCS

ENTER DESCRIPTION	2010/10/11
EC NO: USY2011-0242	2010/10/11
DRWN:ZYYU	2010/10/11
CHKD:W.LUCKY	2010/10/11
APPR:BLAU	2010/10/11
REV	DESCRIPTION
B	

QUALITY SYMBOLS	▽=0	◻=0
GENERAL TOLERANCES (UNLESS SPECIFIED)	mm	INCH
4 PLACES	± ---	± ---
3 PLACES	± ---	± ---
2 PLACES	± ---	± ---
1 PLACE	± ---	± ---
ANGULAR ± ---°		
DRAFT WHERE APPLICABLE MUST REMAIN WITHIN DIMENSIONS		

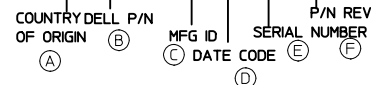
DIMENSION STYLE		SCALE	DESIGN UNITS
MM ONLY		---	METRIC
DRAWN BY	DATE	TITLE	
ZYYU	2010/10/11	36CKTIPASS RT ANG RT EXIT-RT ANG .731M	
CHECKED BY	DATE	MOLEX INCORPORATED	
W.LUCKY	2010/10/11	MATERIAL NO. 1110964002	
APPROVED BY	DATE	DOCUMENT NO. SD-111096-4002	
BLAU	2010/10/11	SHEET NO. 2 OF 3	

THIRD ANGLE PROJECTION	
MOLEX INCORPORATED	
THIS DRAWING CONTAINS INFORMATION THAT IS PROPRIETARY TO MOLEX INCORPORATED AND SHOULD NOT BE USED WITHOUT WRITTEN PERMISSION	

NOTES

1. IPASS INNERMOLD WITH PE RESIN;
IPASS OUTERMOLD WITH PBT RESIN;
2. THIS PRODUCT MUST MEET EU CHEMICAL SUBSTANCE SPECIFICATION FOR PRODUCTS(EU 2002/95/EC RoHS).
3. FOR IPASS END ASSEMBLY PLS REFERS TO E-74562-010 FOR DETAIL.
4. THE PRODUCT ELECTRICAL PERFORMANCE AND MECHANICAL PERFORMANCE REFER TO SAS 2.0 INDUSTRIAL STANDARD
5. MECHANICAL PERFORMANCE REFER TO PS-75783-001.
6. RECOMMENDED MINIMUM BEND RADIUS IS 28MM.
7. TEXT NEED USE FONT ARIAL AND THE TEXT SHOULD BE 3MM MIN.
8. LABEL DETAIL
 - 8.1 FOR LABEL DETAIL PLEASE REFER TO DELL SPECIFICATION NUMBER:
13190 REV. A28-00 TYPE W
 - 8.2 LABEL FORMART:
CN-0N170M-52204-YMD-XXXX-A01
 - 8.3.TEXT NEED USE FONT VERDANA AND THE TEXT SHOULD BE 3PT MINIMUM.
9. CABLES-REFERENCE DOCUMENTS
DN362 SPEC,ENG,STD,DFE
6T198 SPEC,DFE, RESTRICTED-MTL
13190 SPEC, SPLR, BRCD, LBL,(USE IF SHIPPED DIRECTLY TO DELL)
ENG0000116 DOC, PROC, CABLE, ENG
ENG0000117 SPEC, PRCS, QUAL, CBL, ELEC
ENG0000121 DOC, PROC, PPAP, CBL, ENG
ASME Y14.5M-1994 DIMENSIONING AND TOLERANCING

PS:
DELL LABEL SPEC(13190 A28-00) EXTRACT
EVERY SECTION SEE DETAIL REMARK:
CN-0N170M-52204-YMD-XXXX-A01



- (A) ORIGINAL COUNTRY
- (B) DELL P/N
- (C) MFG ID

- (D) DATE CODE
 - 1.FIRST CHARACTER IS YEAR CODE: LAST NUMBER OF THE YEAR.
 - 2.SECOND CHARACTER IS MONTH CODE: SEE CHART.

JAN	FEB	MAR	APR	MAY	JUN	JUL	AUG	SEP	OCT	NOV	DEC
1	2	3	4	5	6	7	8	9	A	B	C

3.3RD CHARACTER IS DAY CODE: 1ST -- 9TH = 1 -- 9 AND 10ST -- 31ST
= A -- V.

- (E) SERIAL NUMBER.
XXXX (DELL SERIAL NUMBER): SUPPLIERS WILL BE ALLOWED THE USE OF CHARACTERS 0-9, A-ON THE FIRST POSITION OF THE SEQUENCE NUMBER, WITH NO RESTRICTIONS ON THE 2NDTHROUGH 4TH POSITIONS PROVIDED THAT EACH SEQUENCE NUMBER IS INDEED UNIQUE.

- (F) P/N REV

ENTER DESCRIPTION EC NO: USY2011-0242 DRWN:ZYYU 2010/10/11 CHKD:W.LUCKY 2010/10/11 APPR:BLAU 2010/10/11	QUALITY SYMBOLS ▽=0 ▽=0	GENERAL TOLERANCES (UNLESS SPECIFIED)		DIMENSION STYLE MM ONLY		SCALE ---	DESIGN UNITS METRIC	THIRD ANGLE PROJECTION		
			mm	INCH	DRAWN BY ZYYU	DATE 2010/10/11	TITLE 36CKTIPASS RT ANG RT EXIT-RT ANG .731M			
		4 PLACES	± ---	± ---	CHECKED BY W.LUCKY	DATE 2010/10/11	MOLEX MOLEX INCORPORATED			
		3 PLACES	± ---	± ---	APPROVED BY BLAU	DATE 2010/10/11				
2 PLACES	± ---	± ---	ANGULAR ± ---°		MATERIAL NO. 1110964002	DOCUMENT NO. SD-111096-4002	SHEET NO. 3 OF 3			
1 PLACE	± ---	± ---	DRAFT WHERE APPLICABLE MUST REMAIN WITHIN DIMENSIONS		SIZE A3	THIS DRAWING CONTAINS INFORMATION THAT IS PROPRIETARY TO MOLEX INCORPORATED AND SHOULD NOT BE USED WITHOUT WRITTEN PERMISSION				