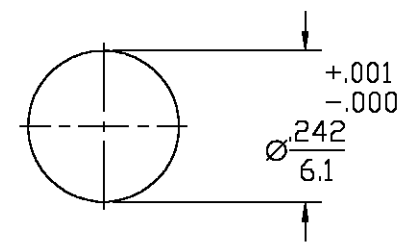


REVISIONS			
REV	DESCRIPTION	DATE	APPROVED
01	RELEASED	KYLE 10-6-97	<i>PCW</i> 10/7/97
B	REVISED PER ECN 0020-0262-01	GV 1/6/03	JGH



RECOMMENDED MOUNTING HOLE

ELECTRICAL	MECHANICAL	ENVIRONMENTAL	COMPONENT	MATERIAL	FINISH
Nominal Impedance (Ohms) 50	Interface Dimensions (DSP End Only)	TEMPERATURE RATING -65° TO +125°C	HOUSING MOUNTING NUT	STAINLESS STEEL PER ASTM-A484 AND ASTM-A582, TYPE 303	PASSIVATE PER QQ-P-35
Frequency Range (GHz) DC to 22	MIL-STD-348, Fig 321-1	Vibration MIL-STD-202, Method 204, Condition D	LOCKWASHER	PTFE FLUOROCARBON PER ASTM-D-1457	N/A
Volt Rating (VRMS MAX) @ Sea Level 335	Force to Engage 3.5mm (In-Lbs MAX) 2	Shock MIL-STD-202, Method 213, Condition I	DIELECTRIC	BERYLLIUM COPPER PER ASTM-B-196 OR ASTM-B-197, ALLOY C17300, CONDITION H	GOLD PLATE PER MIL-G-45204
VSWR TBD	DSP (Lbs MAX) 3	Thermal Shock MIL-STD-202, Method 107, Condition B	CENTER CONTACT	FLOUROSILICONE PER MIL-R-25988, CLASS I, TYPE I.	N/A
Insertion Loss (dB MAX) TBD	Force to Disengage 3.5mm (In-Lbs MAX) 2	Moisture Resistance MIL-STD-202, Method 106	O-RING		
RF Leakage (dB MIN) (Interface Only, Fully Mated) -(90-f(GHz))	DSP (Lbs MAX) 1.5	Corrosion - MIL-STD-202, Method 101, Condition B			
Corona, 70,000 Ft (VRMS MIN) 250	Center Contact Captivation Axial (Lbs) 6				
Dielectric Withstanding Voltage (VRMS MIN) @ Sea Level 1000	Mating Characteristics (3.5mm Only) Insertion (Lbs MAX) 3		UNLESS OTHERWISE SPECIFIED DIMENSIONS ARE IN INCHES	DRAWN BY <i>Camelia</i> DATE 7/22/97	AMP Incorporated 140 Fourth Avenue Waltham, MA 02451-7599
Contact Resistance (Milliohms MAX) Center Contact 4.0	Withdrawal (Oz MIN) 1		FRAC. DEC. ANGLES ± 1/64 ± .005 ± 1°	CHECKED BY	
Outer Contact 2.0			APPROVED BY	USE ASS'Y PROCEDURE	AMP
RF High Potential @ Sea Level (VRMS MIN @ 5 MHz) 670				NO. AP. N/A	
I.R.(Megohms MIN) 5000					TITLE DSP BULKHEAD FEEDTHRU PLUG TO 3.5MM JACK ADAPTER
					SIZE B
					CODE IDENT NO. 26805
					4585-2352-02
					REV 01
					SCALE 4:1
					SHEET 1 OF 1

.XXX = in
XX.X = mm (REF)

CUSTOMER DRAWING

AMP PART # 1251381-1
SHEET 1 OF 1 REV B