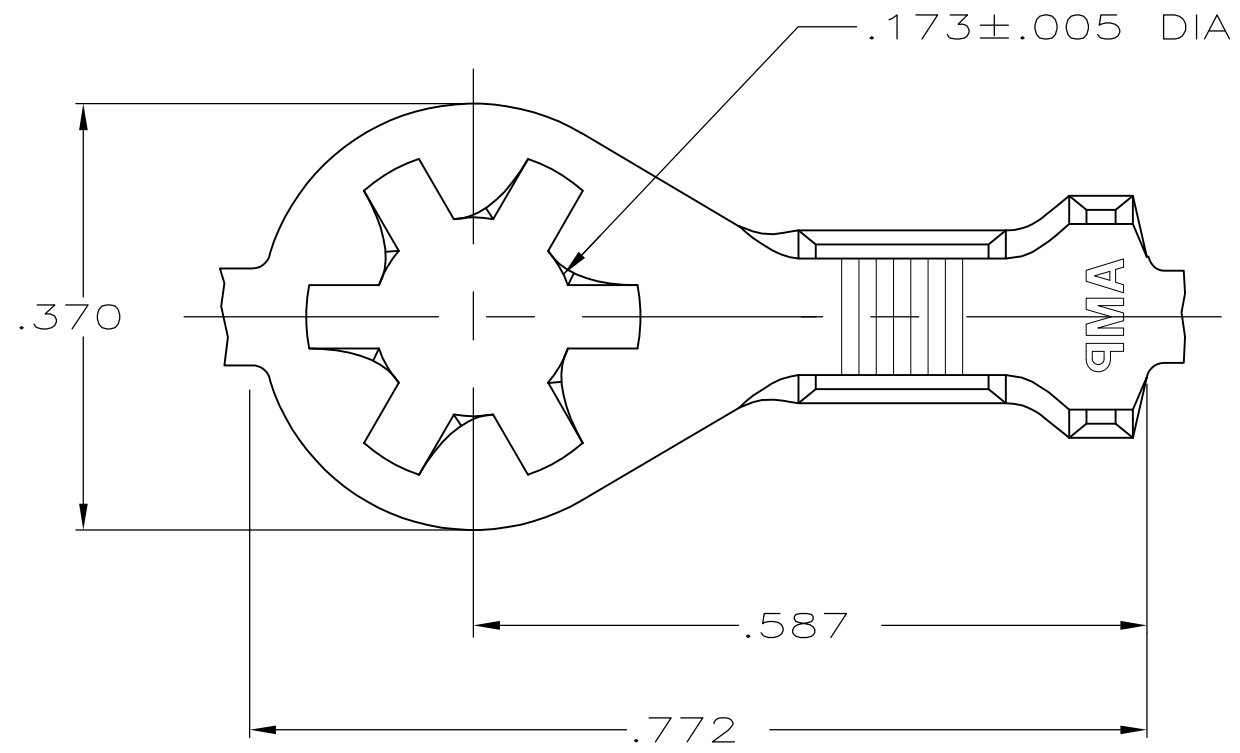
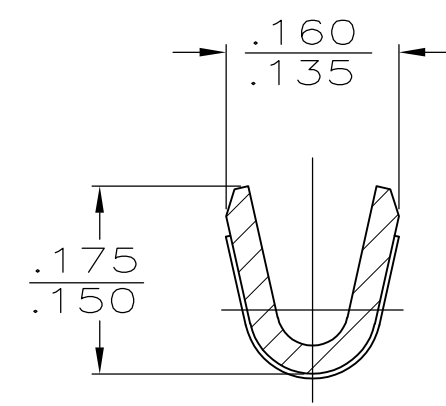


THIS DRAWING IS UNPUBLISHED. RELEASED FOR PUBLICATION  
 © COPYRIGHT - By - ALL RIGHTS RESERVED.

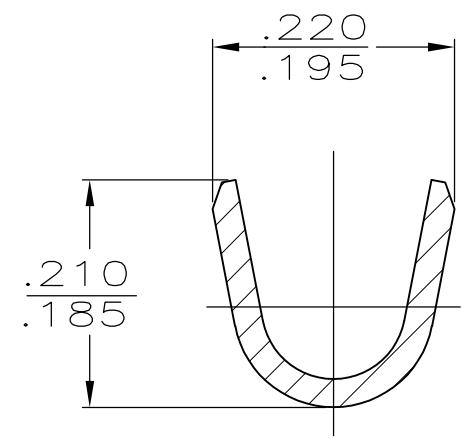
LOC	DIST	REVISIONS			
P	LTR	DESCRIPTION	DATE	DWN	APVD
AF	50	T1	REVISED PER ECO-11-004587	11MAR11	RK HMR



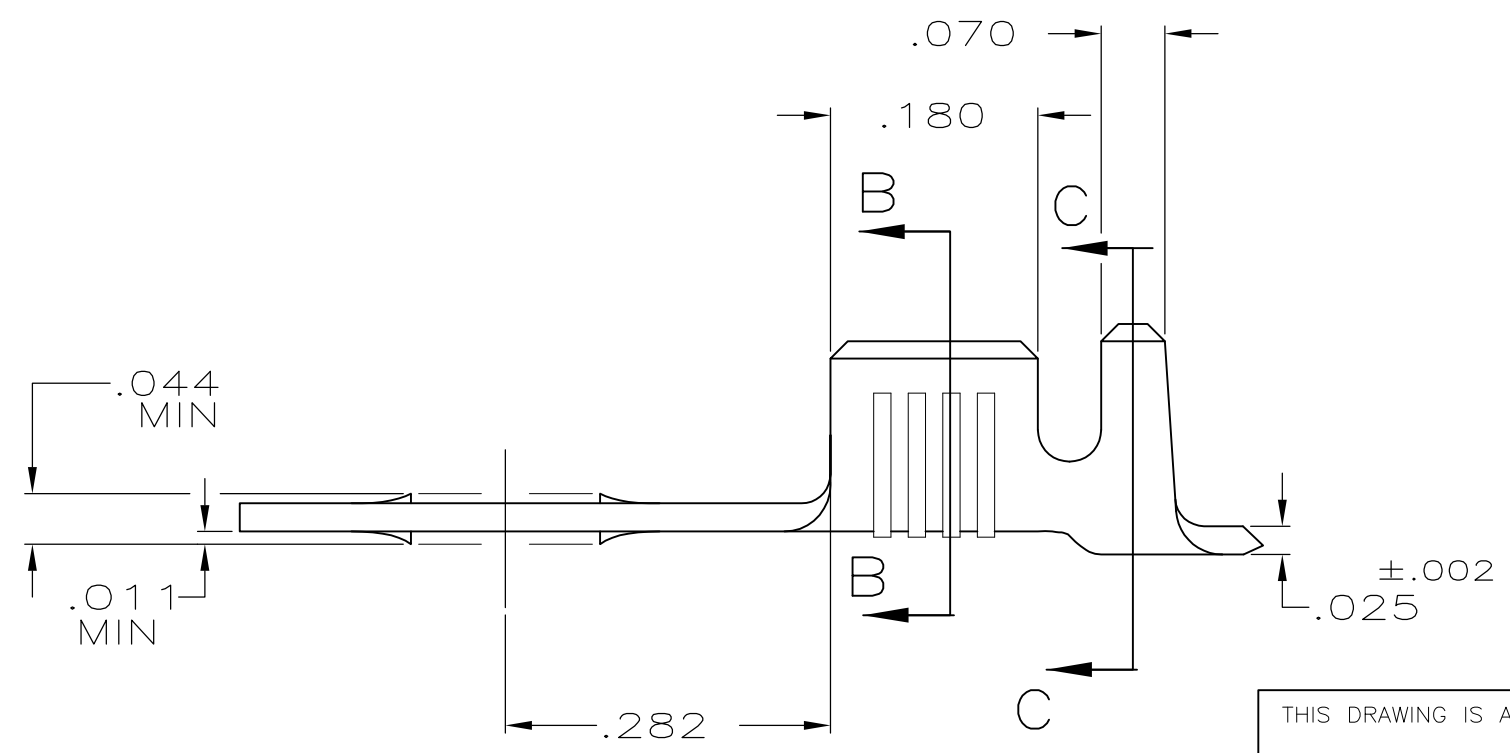
- 1 CONTINUOUS STRIP ON REELS
- 2 REELED WITH PAPER
- 3 .000080 MIN TIN PL PER MIL-T-10727.
- 4 PRELIMINARY - NOT FOR PRODUCTION



SECTION B-B



SECTION C-C



4	3	T4 BRASS	.105-.145	18-14	61794-7
2	3	T2 STEEL	.105-.145	18-14	61794-6
		T4 BRASS	.105-.145	18-14	61794-4
		<del>NICKEL PL</del>	<del>T2 STEEL</del>	<del>105-.145</del>	<del>18-14</del>
		<del>T2 STEEL</del>	<del>.105-.145</del>	<del>18-14</del>	<del>61794-3</del>
		<del>T2 STEEL</del>	<del>.105-.145</del>	<del>18-14</del>	<del>61794-2</del>
	3	T2 STEEL	.105-.145	18-14	61794-1
FINISH		MATERIAL	INSULATION RANGE	WIRE SIZE	PART NO

THIS DRAWING IS A CONTROLLED DOCUMENT.

DWN	D HOLLINGSWORTH	5/15/87
CHK	G YETTER	11/23/87
APVD	RP FRANTZ	12/2/87
PRODUCT SPEC	-	
APPLICATION SPEC	-	
WEIGHT	-	

**STE** TE Connectivity

RING

SIZE	CAGE CODE	DRAWING NO	RESTRICTED TO
A3	00779	C-61794	-

CUSTOMER DRAWING SCALE 6:1 SHEET 1 OF 1 REV T1

DIMENSIONS:	TOLERANCES UNLESS OTHERWISE SPECIFIED:
INCHES	
	0 PLC ± -
	1 PLC ± -
	2 PLC ± -
	3 PLC ± .015
	4 PLC ± -
	ANGLES ± -
MATERIAL	FINISH
SEE TABLE	SEE TABLE