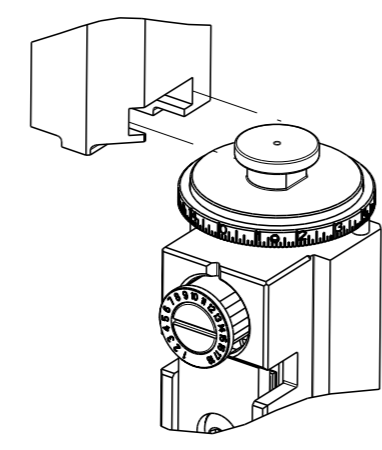


| PART NUMBER | REVISION | DESCRIPTION | FEED TYPE |
|-------------|----------|---------------------------------|-----------|
| 2151991-2 | B | FINE CRIMP HEIGHT ADJUST | PNEUMATIC |
| 7-2151991-2 | B | PNEUMATIC AND CRIMP TOOLING KIT | PNEUMATIC |
| 7-2151991-7 | A | CRIMP TOOLING KIT | - |

ATLANTIC VERSION TERMINATOR INTERFACE ADAPTER



| APPLICATOR DATA | | |
|-----------------|----------------|------|
| CRIMP | SIZE | TYPE |
| WIRE | 3.05 mm [.120] | F |
| INSUL | 6.73 mm [.265] | O |

APPLICATOR INSTRUCTIONS
408-35042

| TERMINAL DATA: TE TERMINAL | | TE CRIMP SPECIFICATION | |
|--|------------------------------|------------------------|--|
| TERMINAL NAME: DIAMETER 4mm PIN & SOCKET | | | |
| WIRE STRIP LENGTH | INSULATION DIAMETER RANGE | | |
| 5.20-5.80 mm [.205-.228 IN] | Ø1.40-3.00 mm [.055-.118 IN] | | |
| TERMINAL APPLICATION SPECIFICATION | 114-18072-1 | | |

| TERMINALS APPLIED | | | | SEAL INSULATION DIAMETER RANGE |
|-------------------|-------------|---------|---------|--------------------------------|
| TE TERMINAL | TE TERMINAL | TE SEAL | TE SEAL | |
| 965838-1 | 965839-1 | | | 1.4-2.1 mm |
| | | | | 2.2-3.0 mm |

| WIRE SIZE | CRIMP HEIGHT mm [INCH] | CRIMP HEIGHT REFERENCE SETTING |
|-----------|-----------------------------|--------------------------------|
| 2.50mm2 | 2.18+/-0.05 [1.086+/-0.002] | 5.0 |
| 2.00mm2 | 2.06+/-0.05 [1.081+/-0.002] | 6.5 |
| 1.50mm2 | 1.94+/-0.05 [1.076+/-0.002] | 7.8 |
| 1.00mm2 | 1.82+/-0.05 [1.072+/-0.002] | 9.1 |

- RECOMMENDED SPARE PARTS
- REFER TO SUPPLIED INSTRUCTION SHEET FOR CLEANING, LUBRICATION AND STORAGE OF APPLICATOR.
- APPLY PART NUMBER 2-23419-6 LOCTITE TO THREADS OF ITEM 242.
- CRIMP HEIGHT REFERENCE SETTING WAS THE SETTING USED WHEN THE APPLICATOR WAS QUALIFIED AT THE FACTORY. ADJUSTMENT MAY BE NECESSARY WHEN RUNNING APPLICATOR IN THE FIELD.
- UNLESS SPECIFIED OTHERWISE TORQUE VALUES SHALL BE USED PER DOCUMENT, 101-35000.
- CUT TO LENGTH AT ASSEMBLY.
- TERMINAL PITCH NOT COMPATIBLE WITH MECHANICAL FEED.
- APPLY TORO-SEAL IN ALLN SOCKET TO FILL HOLE AFTER FLAT HD HAS BEEN ADJUSTED TO CORRECT WEIGHT AT QUALIFICATION. APPLY #1-23419-5 LOC-TITE TO THE THREADS.

***WARNING**
ON INSTALLATION, SET WIRE DISC TO CRIMP HEIGHT REFERENCE SETTING FOR LARGEST WIRE SIZE. CRIMP HEIGHT REFERENCE SETTINGS GREATER THAN THE VALUE SHOWN MAY CAUSE DAMAGE TO THE CRIMP TOOLING. REFER TO THE INSTRUCTION SHEET FOR PROPER SETUP AND ADJUSTMENTS.

| LOC | DIST | REVISIONS | | | | | |
|-----|------|-----------|-----|---------------|-----------|-----|------|
| | | # | LY# | DESCRIPTION | DATE | OWN | APVD |
| A | 66 | A | | RELEASED | 19FEB2015 | RW | TE |
| | | B | | ECR-22-134277 | 29MAR2022 | JWC | RR |
| | | B1 | | ECR-22-139686 | 19MAY2022 | FZ | GB |

| | | | | | |
|---|-----|-----|-------------|-------------------------------------|-----|
| - | 2 | 2 | 2168083-1 | SCR, SKT HD CAP, RoHS, M3 X 8.0 | 269 |
| - | 1 | 1 | 1633782-4 | FENCE | 267 |
| - | 1 | 1 | 1803078-4 | SPACER, PRECISION | 259 |
| - | 1 | 1 | 2119641-1 | FEED CAM, AIR FEED | 248 |
| - | 1 | 1 | 2119082-6 | CAM, SNAIL, INSULATION ADJUSTMENT | 244 |
| - | 1 | 1 | 2079764-1 | WASHER, WAVE SPRING, CREST-TO-CREST | 243 |
| - | 1 | 1 | 2119083-1 | RETAINER, INSULATION DIAL | 242 |
| - | 1 | 1 | 7-18023-7 | SCR, SKT HD CAP M3 X 4.0 | 241 |
| - | 1 | 1 | 2844940-2 | AIR FEED MODULE | 238 |
| - | REF | REF | 994970-2 | COUNTER, MAGNETIC | 164 |
| - | 1 | 1 | 1-22281-8 | SPRING, COMPRESSION | 121 |
| - | 1 | 1 | 2844908-1 | SCREW, LOCKING | 99 |
| - | 1 | 1 | 2844907-1 | POST, LOCKING | 98 |
| - | 1 | 1 | 1-690438-0 | FRONT STRIP GUIDE | 96 |
| - | 2 | 2 | 2168083-1 | SCR, SKT HD CAP, RoHS, M3 X 8.0 | 95 |
| - | 1 | 1 | 2168083-6 | SCR, SKT HD CAP, RoHS, M5 X 65 | 93 |
| - | 1 | 1 | 318563-1 | GUARD, FRONT CHIP | 89 |
| - | 1 | 1 | 455888-5 | SPACER, CRIMPER | 82 |
| - | 1 | 1 | 1803607-3 | DOCUMENTATION PACKAGE | 71 |
| - | 1 | 1 | 2119740-1 | TAG, IDENTIFICATION | 67 |
| - | 2 | 2 | 2168078-1 | SCREW, DRIVE, RH, RoHS, 2 x .188 | 66 |
| - | 2 | 2 | 2-18032-5 | SCR, SET, FLT PNT, M5 X 20.0 | 61 |
| - | 1 | 1 | 2168083-2 | SCR, SKT HD CAP, RoHS, M4 X 8.0 | 60 |
| - | 1 | 1 | 5-18022-5 | SCR, HEX HD CAP, M4 X 6.0 | 59 |
| - | 1 | 1 | 1-2168083-3 | SCR, SKT HD CAP, RoHS, M3 X 16 | 57 |
| - | 1 | 1 | 1-1338683-1 | FEED PAWL | 56 |
| - | 4 | 4 | 2168083-3 | SCR, SKT HD CAP, RoHS, M4 X 12.0 | 54 |
| - | 2 | 2 | 2168083-8 | SCR, SKT HD CAP, RoHS, M4 X 16 | 53 |
| - | 1 | 1 | 5018030-1 | NUT, HEX, REG, RoHS, M3 | 52 |
| - | 1 | 1 | 811242-5 | BUMPER, HOLD DOWN | 51 |
| - | 1 | 1 | 690753-2 | SPACER, TONKER | 50 |
| - | 1 | 1 | 18023-9 | SCR, SKT HD CAP M4 X 6.0 | 49 |
| - | 1 | 1 | 1-1803583-7 | APPLICATOR BASIC ASSEMBLY, SF | 46 |
| - | 1 | 1 | 1803515-2 | RAM ASSEMBLY, SF ATLANTIC | 44 |
| - | 1 | 1 | 1803602-2 | SCR, BHSC, RoHS (M8 X 40) | 41 |
| - | 1 | 1 | 1-1752356-6 | SUPPORT, TERMINAL | 34 |
| - | 4 | 4 | 2079383-4 | SCR, BHSC, RoHS (M4 X 8) | 33 |
| - | 1 | 1 | 1633744-2 | SPACER, STRIP GUIDE | 30 |
| - | 1 | 1 | 2844938-9 | PLATE, STRIP GUIDE | 29 |
| - | 1 | 1 | 455888-3 | SPACER, CRIMPER | 28 |
| - | 2 | 2 | 22283-1 | SPRING, COMPRESSION | 27 |
| - | 1 | 1 | 356835-1 | LEVER, DRAG RELEASE | 26 |
| - | 1 | 1 | 240792-1 | DRAG, TERMINAL | 25 |
| - | 1 | 1 | 2-1320928-3 | STRIP GUIDE | 24 |
| - | 1 | 1 | 980371-4 | SCR, SKT HD SHLDR 5.0 DIA X 6.0 | 23 |
| - | 1 | 1 | 2168083-2 | SCR, SKT HD CAP, RoHS, M4 X 8.0 | 21 |
| - | 1 | 1 | 1-18028-2 | WASHER, FLAT, REG M4 | 20 |
| - | 1 | 1 | 2119533-1 | STRIPPER, SIDE FEED | 19 |
| - | 1 | 1 | 2119806-1 | INSERT, SHEAR | 13 |
| - | 1 | 1 | 3-22280-3 | SPRING, COMPRESSION | 12 |
| - | 1 | 1 | 1-356885-3 | STOP, SHEAR | 11 |
| - | 1 | 1 | 2119805-7 | SHEAR HOLDER, FRONT | 10 |
| - | 1 | 1 | 318059-9 | FLOATING SHEAR, FRONT | 9 |
| - | 1 | 2 | 1-1633930-8 | ANVIL, COMBINATION | 8 |
| - | 1 | 1 | 240641-4 | SPACER | 7 |
| - | - | - | - | - | 6 |
| - | 1 | 1 | 1803080-1 | DEPRESSOR, SHEAR | 5 |
| - | 1 | 1 | 2-238011-1 | BLOCK, CRIMPER SPACER | 4 |
| - | 1 | 2 | 8-2119784-8 | CRIMPER, INSULATION O PREMIUM | 3 |
| - | 1 | 1 | 1-455888-8 | SPACER, CRIMPER | 2 |
| - | 1 | 2 | 6-657555-9 | CRIMPER, WIRE PREMIUM | 1 |

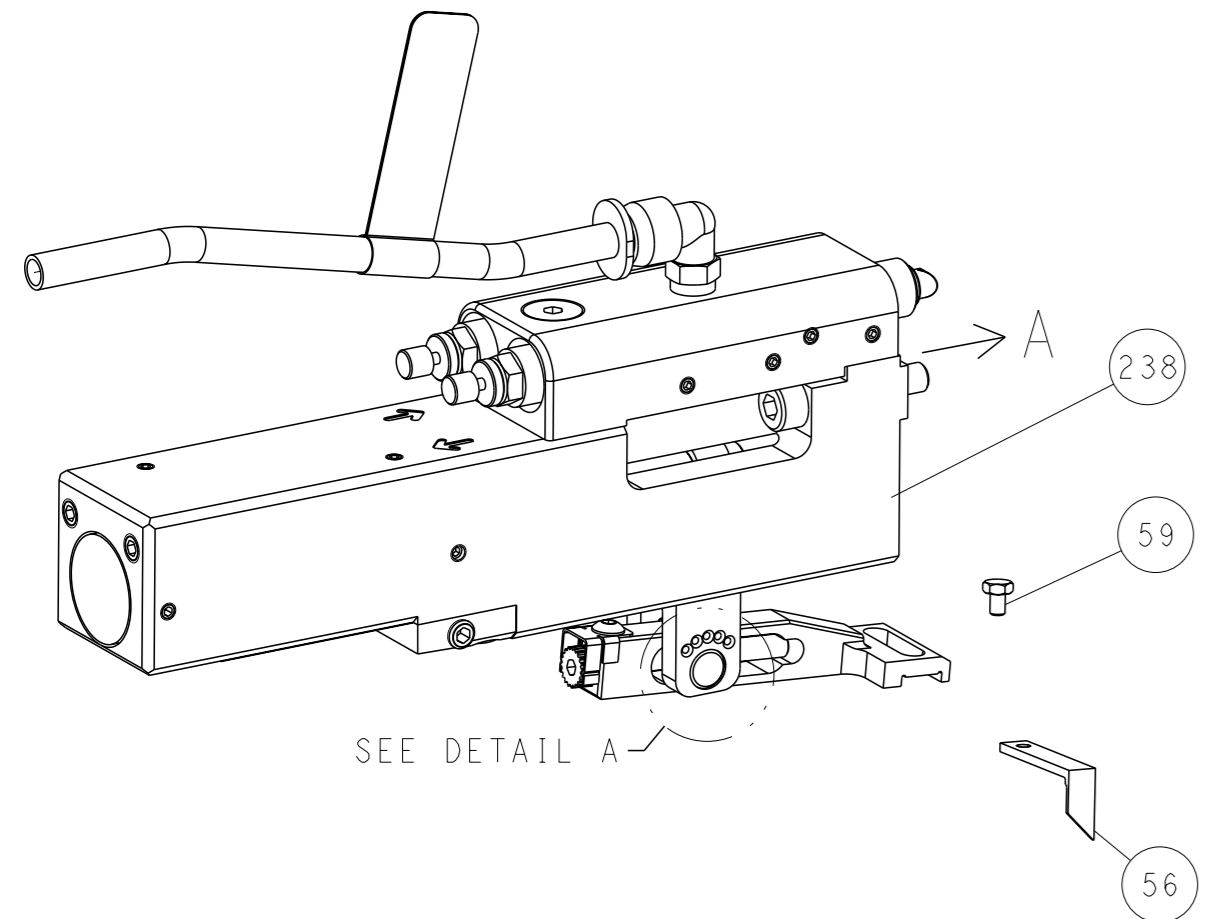
ATLANTIC VERSION
Shown on sheets 1 of 4 & 2 of 4
(Pacific version shown on sheets 3 of 4 & 4 of 4)

| | | | | | | | |
|----------------|---|--|---|----------------------------|---|---|--|
| DIMENSIONS: mm | | TOLERANCES UNLESS OTHERWISE SPECIFIED: | | OWN R. O. WILSON 26DEC2014 | | TE Connectivity Harrisburg, PA 17105-3608 | |
| 0 PLC | ± | 1 PLC | ± | CHK K. J. STAKEM 29DEC2014 | NAME Ocean Side Feed Applicator | | |
| 2 PLC | ± | 3 PLC | ± | APVD T. L. ELBIN 29DEC2014 | SIZE CAGE CODE DRAWING NO RESTRICTED TO | | |
| 4 PLC | ± | ANGLES | ± | APPLICATION SPEC | SCALE 1:2 SHEET 1 OF 4 REV B1 | | |
| MATERIAL | | FINISH | | WEIGHT | Customer Accessible Production Drawing | | |

| LOC | DIST | REVISIONS | | | | |
|-----|------|-----------|-------------|------|-----|------|
| A | 66 | REV | DESCRIPTION | DATE | OWN | APVD |
| | | - | SEE SHEET 1 | - | - | - |

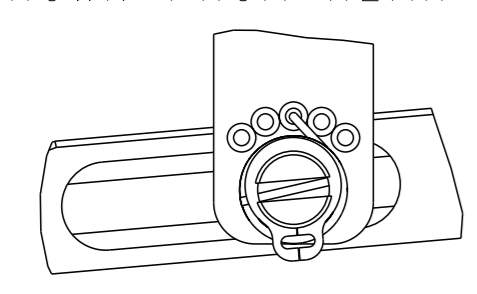
FEED TYPE

PNEUMATIC



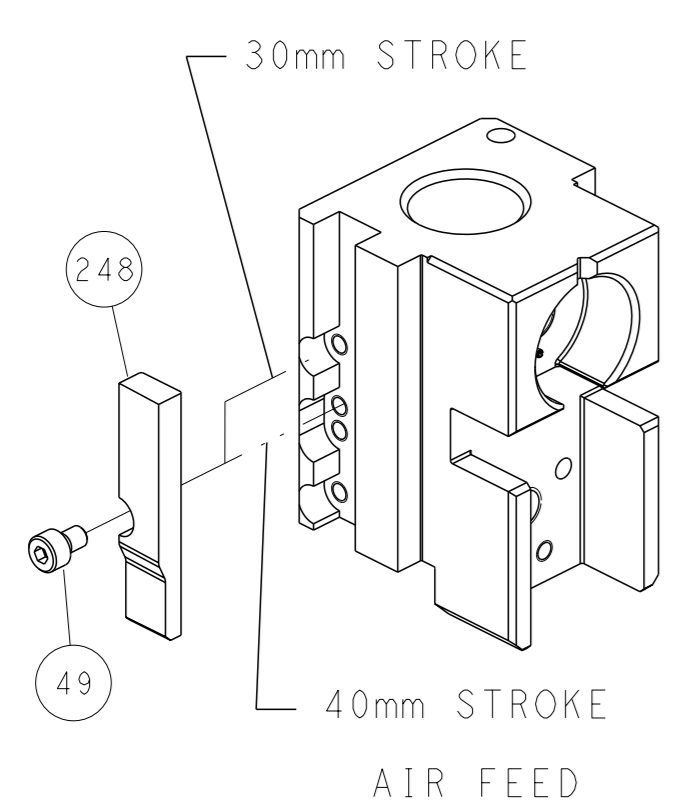
SEE DETAIL A

FEED SPRING SETTING POSITION
(SHOWN FROM REAR SIDE)

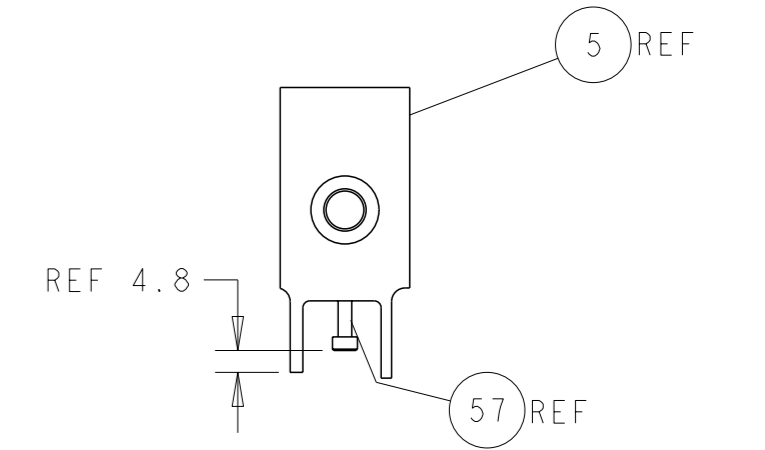
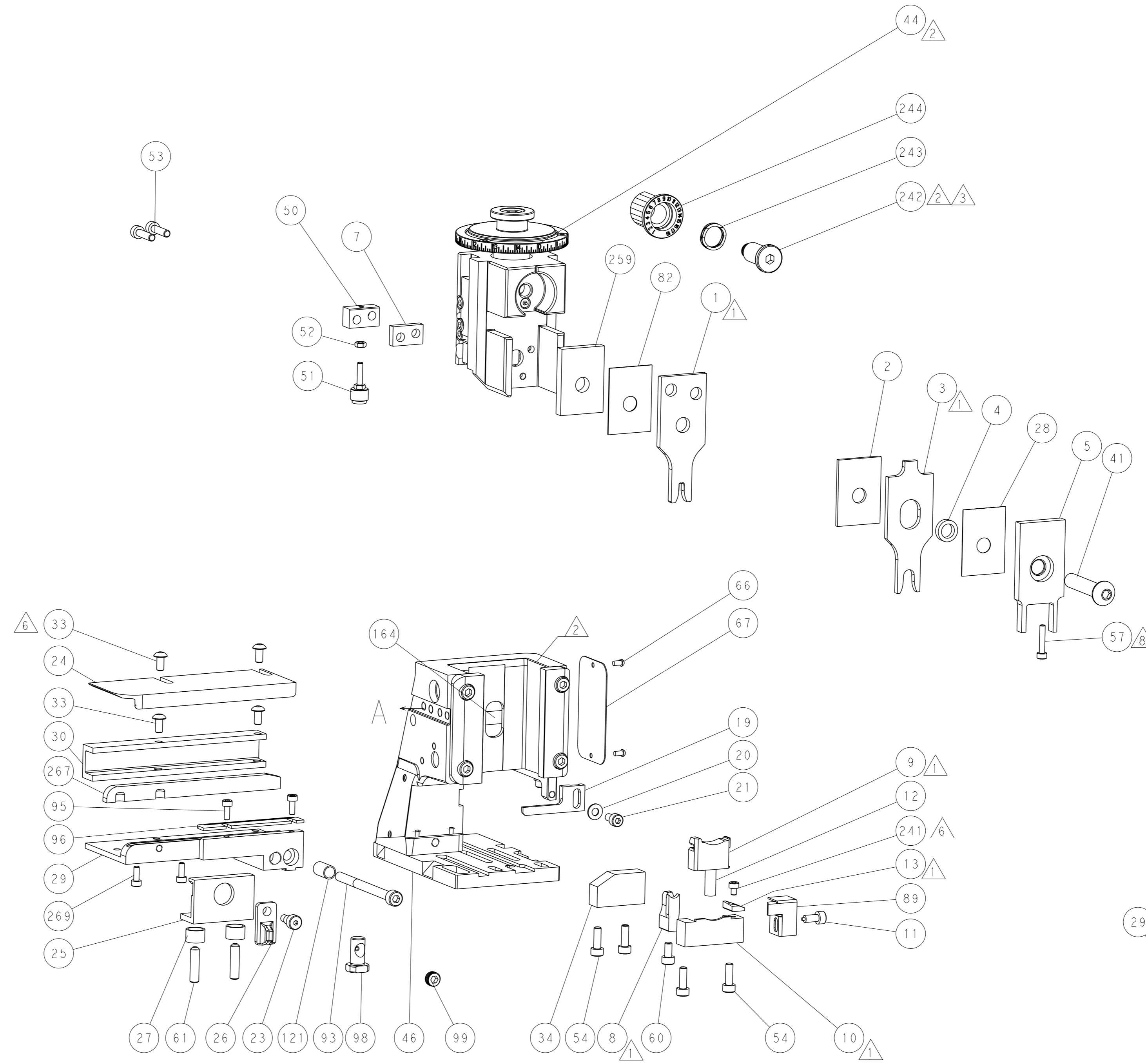


DETAIL A

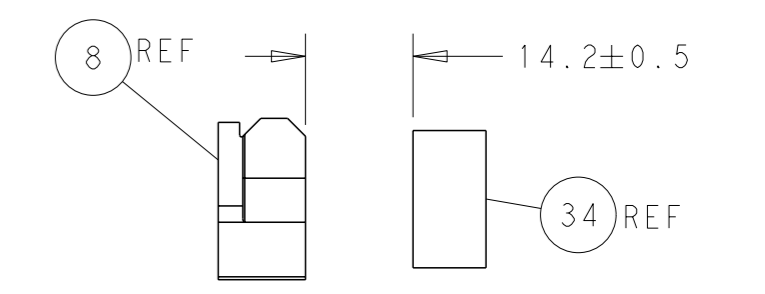
CAM POSITION



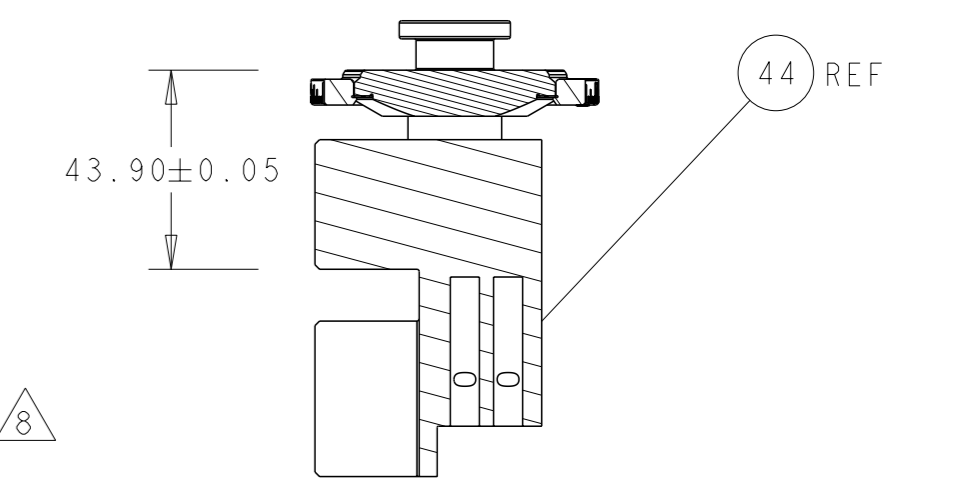
AIR FEED



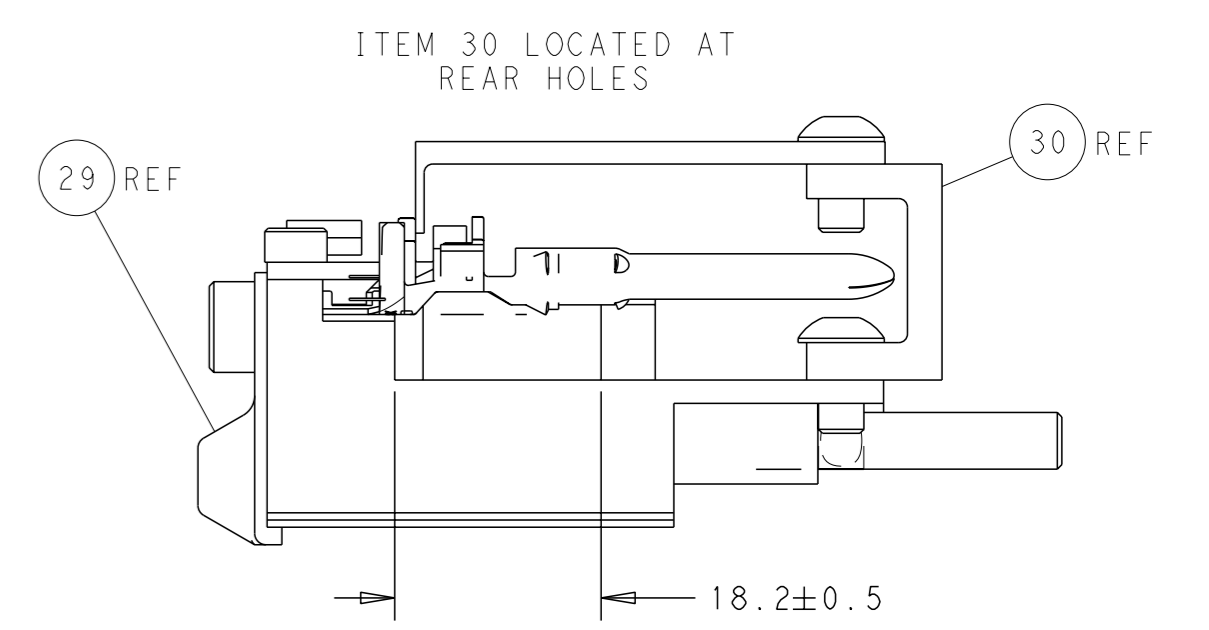
SHEAR DEPRESSOR DETAIL



TERMINAL SUPPORT LOCATION



RAM SET-UP



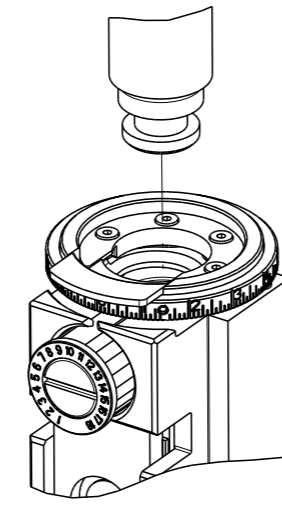
FEED TRACK POSITION
GUIDE BY INSULATION BARREL

ATLANTIC VERSION
 Shown on sheets 1 of 4 & 2 of 4
 (Pacific version shown on sheets 3 of 4 & 4 of 4)

| | | | | |
|---|--|---|---|--|
| <small>THIS DRAWING IS A CONTROLLED DOCUMENT FOR TYCO ELECTRONICS CORPORATION. IT IS SUBJECT TO CHANGE AND ITS CONTENTS ARE NOT TO BE REPRODUCED OR TRANSMITTED IN ANY FORM OR BY ANY MEANS, ELECTRONIC OR MECHANICAL, INCLUDING PHOTOCOPYING, RECORDING, OR BY ANY INFORMATION STORAGE AND RETRIEVAL SYSTEM, WITHOUT THE WRITTEN PERMISSION OF TYCO ELECTRONICS CORPORATION.</small> | | OWN: R. O. WILSON CHK: K. J. STAKEM APVD: J. L. ELBIN | 26DEC2014 29DEC2014 29DEC2014 | TE Connectivity Harrisburg, PA 17105-3608 |
| DIMENSIONS: mm TOLERANCES UNLESS OTHERWISE SPECIFIED: 0 PLC ± 1 PLC ± 2 PLC ± 3 PLC ± 4 PLC ± ANGLES FINISH ± | | NAME: Ocean Side Feed Applicator PRODUCT SPEC: APPLICATION SPEC: WEIGHT: | SIZE: A1 CAGE CODE: 00779 DRAWING NO: 2151991 | RESTRICTED TO: |
| MATERIAL: | | CUSTOMER ACCESSIBLE PRODUCTION DRAWING | SCALE: 1:2 | SHEET 2 OF 4 REV B1 |

| COMPANY TO | BY TYCO ELECTRONICS CORPORATION. ALL RIGHTS RESERVED. | RELEASED FOR PUBLICATION | 20 |
|-------------|---|--------------------------|-----------|
| NUMBER | REVISION | DESCRIPTION | FEED TYPE |
| 2-2151991-2 | B | FINE CRIMP HEIGHT ADJUST | PNEUMATIC |
| 7-2151991-7 | A | CRIMP TOOLING KIT | - |

PACIFIC VERSION TERMINATOR
INTERFACE ADAPTER



| APPLICATOR DATA | | |
|--------------------------------------|------------------|------|
| CRIMP | SIZE | TYPE |
| WIRE | 3.05 mm [.120] | F |
| INSUL | 6.73 mm [.265] | O |
| APPLICATOR INSTRUCTIONS 408-35042 | | |

| TERMINAL DATA: TE TERMINAL | | TE CRIMP SPECIFICATION | |
|--|--------------------------------|------------------------|--|
| TERMINAL NAME: DIAMETER 4mm PIN & SOCKET | | | |
| WIRE STRIP LENGTH | INSULATION DIAMETER RANGE | | |
| 5.20-5.80 mm [.205-.228 IN] | ∅1.40-3.00 mm [.055-.118 IN] | | |
| TERMINAL APPLICATION SPECIFICATION | 114-18072-1 | | |

| TERMINALS APPLIED | | | | SEAL INSULATION DIAMETER RANGE |
|-------------------|-------------|---------|----------|--------------------------------|
| TE TERMINAL | TE TERMINAL | TE SEAL | TE SEAL | |
| 965838-1 | 965839-1 | | 963243-1 | 1.4-2.1 mm |
| | | | 963244-1 | 2.2-3.0 mm |

| WIRE SIZE | CRIMP HEIGHT mm [INCH] | CRIMP HEIGHT REFERENCE SETTING |
|-----------|---------------------------------|--------------------------------|
| 2.50mm2 | 2.18 +/- 0.05 [.086 +/- .002] | 5.0 |
| 2.00mm2 | 2.06 +/- 0.05 [.081 +/- .002] | 6.5 |
| 1.50mm2 | 1.94 +/- 0.05 [.076 +/- .002] | 7.8 |
| 1.00mm2 | 1.82 +/- 0.05 [.072 +/- .002] | 9.1 |

- RECOMMENDED SPARE PARTS
- REFER TO SUPPLIED INSTRUCTION SHEET FOR CLEANING, LUBRICATION AND STORAGE OF APPLICATOR.
- APPLY PART NUMBER 2-23419-6 LOCTITE TO THREADS OF ITEM 242.
- CRIMP HEIGHT REFERENCE SETTING WAS THE SETTING USED WHEN THE APPLICATOR WAS QUALIFIED AT THE FACTORY. ADJUSTMENT MAY BE NECESSARY WHEN RUNNING APPLICATOR IN THE FIELD.
- 5. UNLESS SPECIFIED OTHERWISE TORQUE VALUES SHALL BE USED PER DOCUMENT, 101-35000.
- CUT TO LENGTH AT ASSEMBLY.
- TERMINAL PITCH NOT COMPATIBLE WITH MECHANICAL FEED.
- APPLY TORO-SEAL IN ALLN SOCKET TO FILL HOLE AFTER FLAT HD HAS BEEN ADJUSTED TO CORRECT WEIGHT AT QUALIFICATION. APPLY #1-23419-5 LOC-TITE TO THE THREADS.

***WARNING**
ON INSTALLATION, SET WIRE DISC TO CRIMP HEIGHT REFERENCE SETTING FOR LARGEST WIRE SIZE. CRIMP HEIGHT REFERENCE SETTINGS GREATER THAN THE VALUE SHOWN MAY CAUSE DAMAGE TO THE CRIMP TOOLING. REFER TO THE INSTRUCTION SHEET FOR PROPER SETUP AND ADJUSTMENTS.

PACIFIC VERSION
Shown on sheets 3 of 4 & 4 of 4
(Atlantic version shown on sheets 1 of 4 & 2 of 4)

| LOC | DIST | REVISIONS | | | | | |
|-----|------|-----------|-----|-------------|------|-----|------|
| A | 66 | P | LYR | DESCRIPTION | DATE | OWN | APVD |
| | | - | | SEE SHEET 1 | - | - | - |

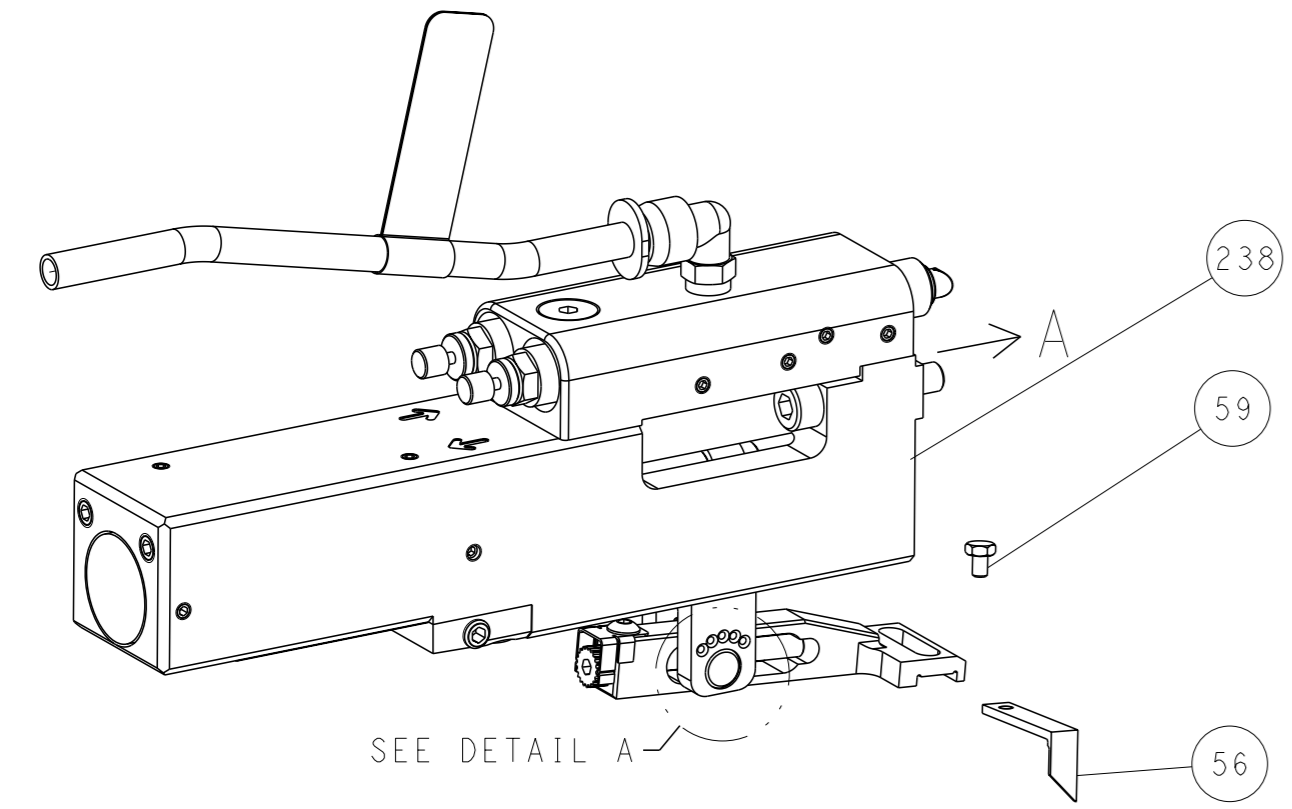
| | | | | |
|---|-----|-------------|-------------------------------------|---------|
| - | 2 | 2168083-1 | SCR, SKT HD CAP, RoHS, M3 X 8.0 | 269 |
| - | 1 | 1633782-4 | FENCE | 267 |
| - | 1 | 1803078-4 | SPACER, PRECISION | 259 |
| - | 1 | 2119082-6 | CAM, SNAIL, INSULATION ADJUSTMENT | 244 |
| - | 1 | 2079764-1 | WASHER, WAVE SPRING, CREST-TO-CREST | 243 |
| - | 1 | 2119083-1 | RETAINER, INSULATION DIAL | 242 |
| - | 1 | 7-18023-7 | SCR, SKT HD CAP M3 X 4.0 | 241 |
| - | 1 | 2844940-2 | AIR FEED MODULE | 238 |
| - | REF | 994970-2 | COUNTER, MAGNETIC | 164 |
| - | 1 | 2119641-2 | FEED CAM, AIR FEED | 151 |
| - | 1 | 2168083-8 | SCR, SKT HD CAP, RoHS, M4 X 16 | 144 |
| - | 4 | 2168083-9 | SCR, SKT HD CAP, RoHS, M4 X 20 | 143 |
| - | 1 | 1-1803583-8 | APPLICATOR BASIC ASSEMBLY, SF | 141 |
| - | 1 | 1803516-2 | RAM ASSEMBLY, SF PACIFIC | 140 |
| - | 1 | 1-22281-8 | SPRING, COMPRESSION | 121 |
| - | 1 | 2844908-1 | SCREW, LOCKING | 99 |
| - | 1 | 2844907-1 | POST, LOCKING | 98 |
| - | 1 | 1-690438-0 | FRONT STRIP GUIDE | 96 |
| - | 2 | 2168083-1 | SCR, SKT HD CAP, RoHS, M3 X 8.0 | 95 |
| - | 1 | 2168083-6 | SCR, SKT HD CAP, RoHS, M5 X 65 | 93 |
| - | 1 | 318563-1 | GUARD, FRONT CHIP | 89 |
| - | 1 | 455888-5 | SPACER, CRIMPER | 82 |
| - | 1 | 1803607-3 | DOCUMENTATION PACKAGE | 71 |
| - | 1 | 2119740-1 | TAG, IDENTIFICATION | 67 |
| - | 2 | 2168078-1 | SCREW, DRIVE, RH, RoHS, 2 x .188 | 66 |
| - | 2 | 2-18032-5 | SCR, SET, FLT PNT, M5 X 20.0 | 61 |
| - | 1 | 5-18022-5 | SCR, HEX HD CAP, M4 X 6.0 | 59 |
| - | 1 | 1-2168083-3 | SCR, SKT HD CAP, RoHS, M3 X 16 | 57 |
| - | 1 | 1-1338683-1 | FEED PAWL | 56 |
| - | 2 | 2168083-8 | SCR, SKT HD CAP, RoHS, M4 X 16 | 53 |
| - | 1 | 5018030-1 | NUT, HEX, REG, RoHS, M3 | 52 |
| - | 1 | 811242-5 | BUMPER, HOLD DOWN | 51 |
| - | 1 | 690753-2 | SPACER, TONKER | 50 |
| - | 1 | 18023-9 | SCR, SKT HD CAP M4 X 6.0 | 49 |
| - | 1 | 1803602-2 | SCR, BHSC, RoHS (M8 X 40) | 41 |
| - | 1 | 1-1752356-6 | SUPPORT, TERMINAL | 34 |
| - | 4 | 2079383-4 | SCR, BHSC, RoHS (M4 X 8) | 33 |
| - | 1 | 1633744-2 | SPACER, STRIP GUIDE | 30 |
| - | 1 | 2844938-9 | PLATE, STRIP GUIDE | 29 |
| - | 1 | 455888-3 | SPACER, CRIMPER | 28 |
| - | 2 | 22283-1 | SPRING, COMPRESSION | 27 |
| - | 1 | 356835-1 | LEVER, DRAG RELEASE | 26 |
| - | 1 | 240792-1 | DRAG, TERMINAL | 25 |
| - | 1 | 2-1320928-3 | STRIP GUIDE | 24 |
| - | 1 | 980371-4 | SCR, SKT HD SHLDR 5.0 DIA X 6.0 | 23 |
| - | 1 | 2168083-2 | SCR, SKT HD CAP, RoHS, M4 X 8.0 | 21 |
| - | 1 | 1-18028-2 | WASHER, FLAT, REG M4 | 20 |
| - | 1 | 2119533-1 | STRIPPER, SIDE FEED | 19 |
| - | 1 | 2119806-1 | INSERT, SHEAR | 13 |
| - | 1 | 3-22280-3 | SPRING, COMPRESSION | 12 |
| - | 1 | 1-356885-3 | STOP, SHEAR | 11 |
| - | 1 | 2119805-7 | SHEAR HOLDER, FRONT | 10 |
| - | 1 | 318059-9 | FLOATING SHEAR, FRONT | 9 |
| - | 1 | 1-1633930-8 | ANVIL, COMBINATION | 8 |
| - | 1 | 240641-4 | SPACER | 7 |
| - | - | - | - | 6 |
| - | 1 | 1803080-1 | DEPRESSOR, SHEAR | 5 |
| - | 1 | 2-238011-1 | BLOCK, CRIMPER SPACER | 4 |
| - | 1 | 8-2119784-8 | CRIMPER, INSULATION O PREMIUM | 3 |
| - | 1 | 1-455888-8 | SPACER, CRIMPER | 2 |
| - | 1 | 6-657555-9 | CRIMPER, WIRE PREMIUM | 1 |
| - | 77 | -22 | PART NO | ITEM NO |

| DIMENSIONS: | | TOLERANCES UNLESS OTHERWISE SPECIFIED: | | APPROVED: | | NAME: | |
|-------------|---------------|--|---------|-----------|---------|-------|------|
| mm | 0 PLC ± | 1 PLC ± | 2 PLC ± | 3 PLC ± | 4 PLC ± | APVD | NAME |
| | ANGLES FINISH | | | | | | |
| MATERIAL | | WEIGHT | | SCALE | | SHEET | REV |

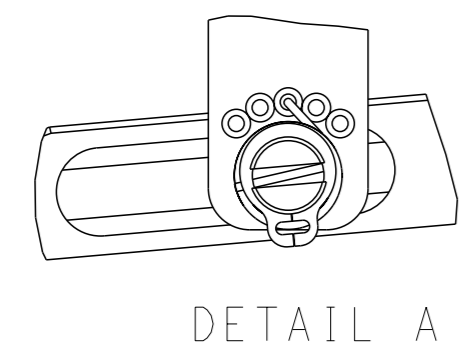
Customer Accessible Production Drawing

| LOC | | DIST | | REVISIONS | | | | | |
|-----|--|------|--|-----------|-----|-------------|------|-----|------|
| A | | 66 | | P | LYR | DESCRIPTION | DATE | OWN | APVD |
| | | | | - | - | SEE SHEET 1 | - | - | - |

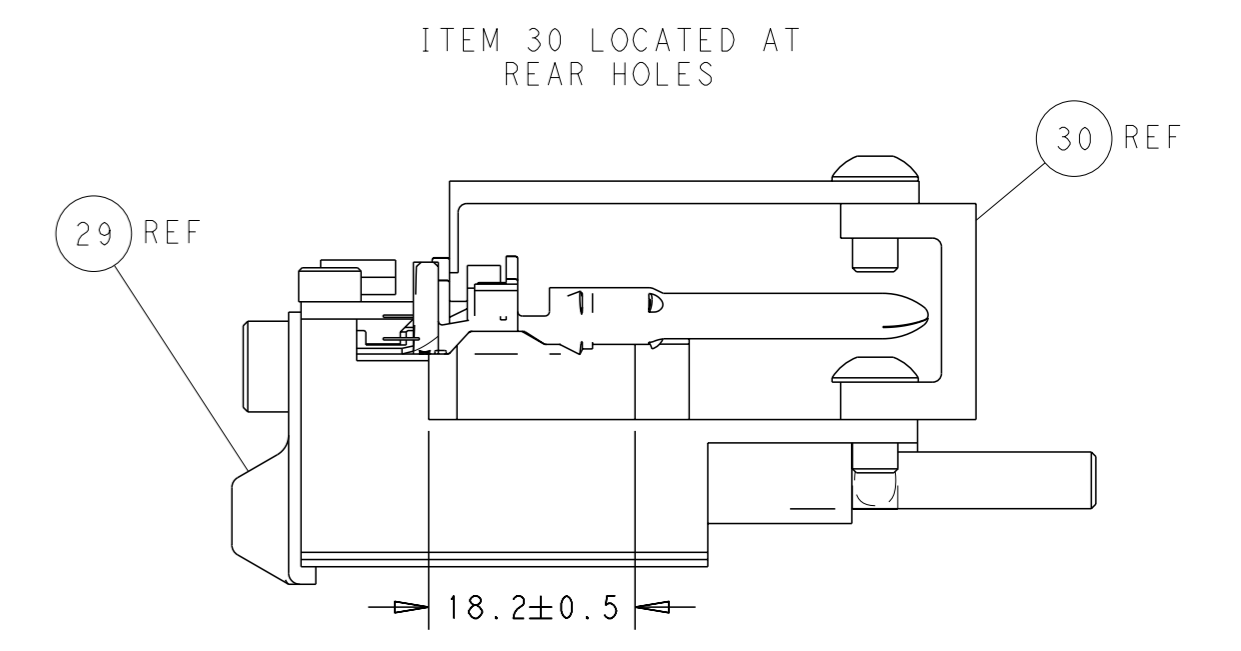
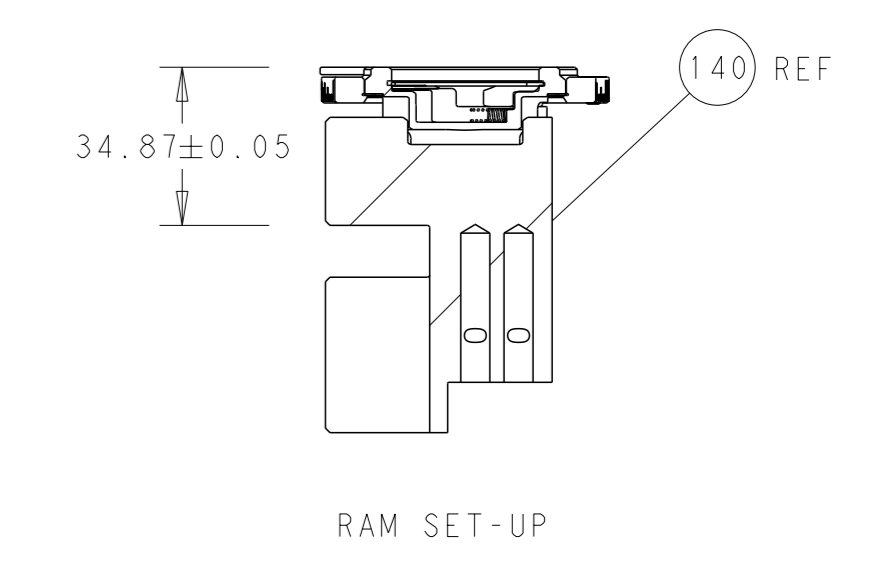
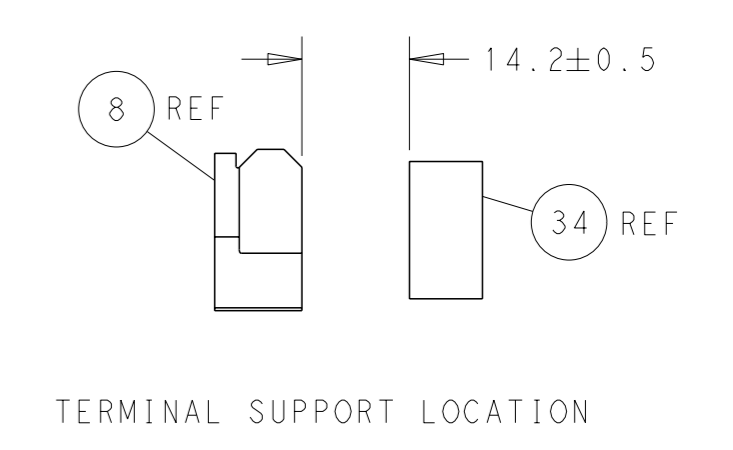
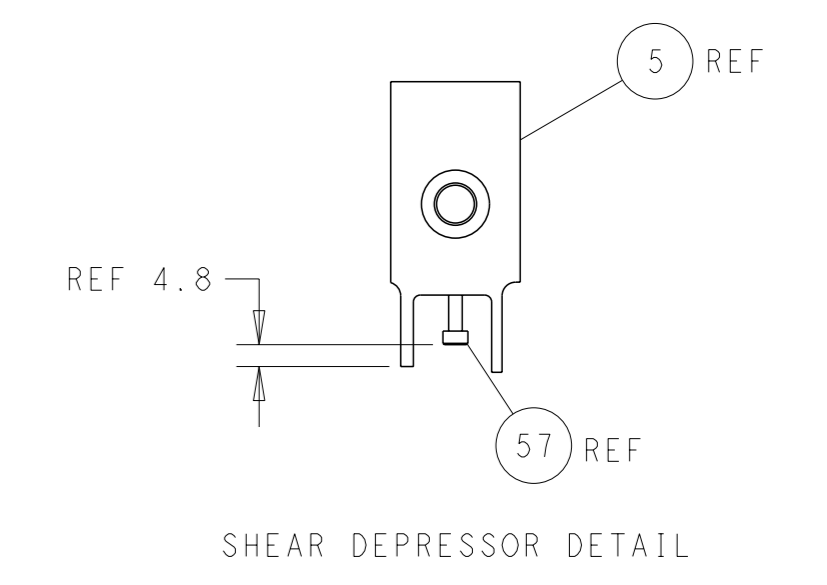
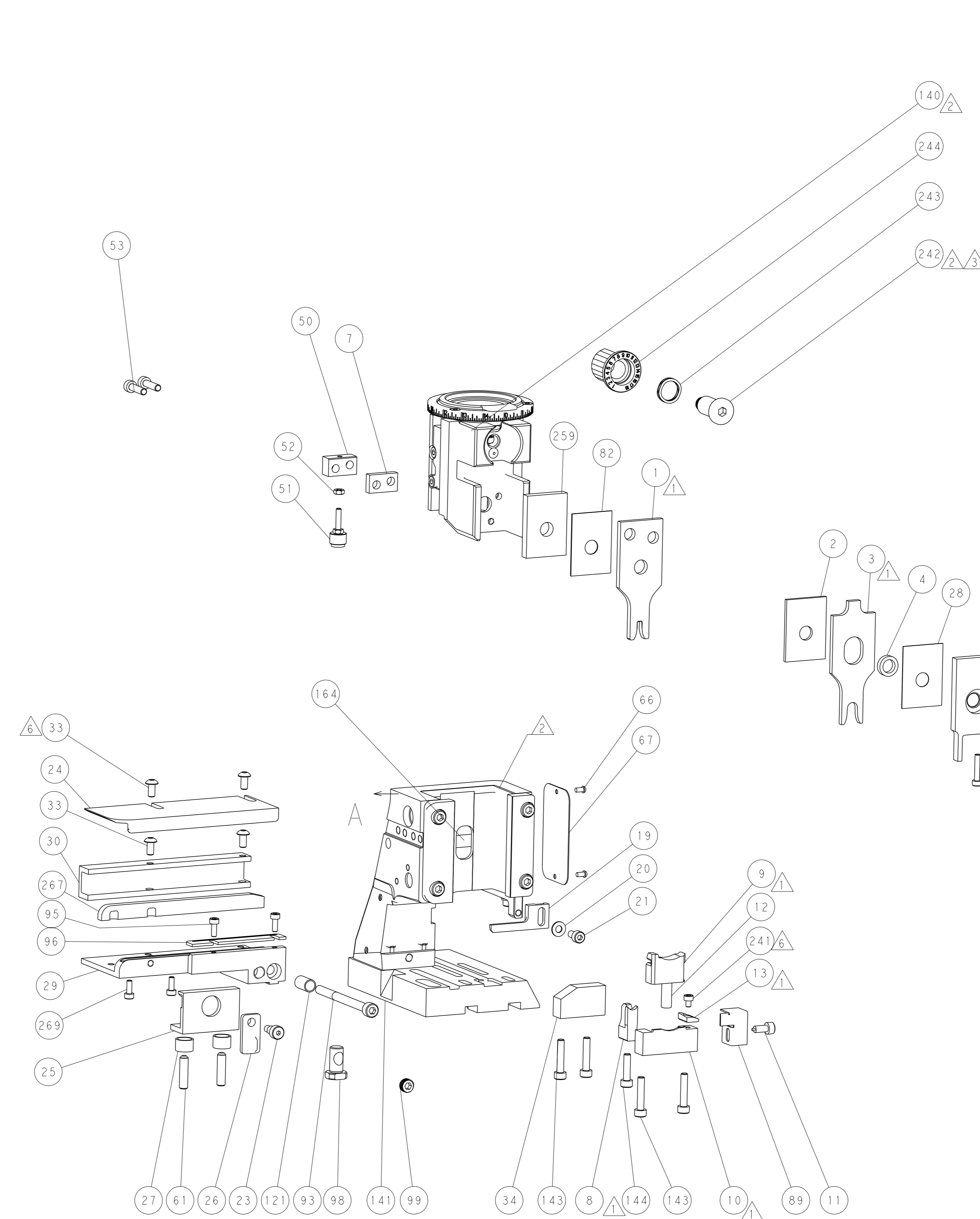
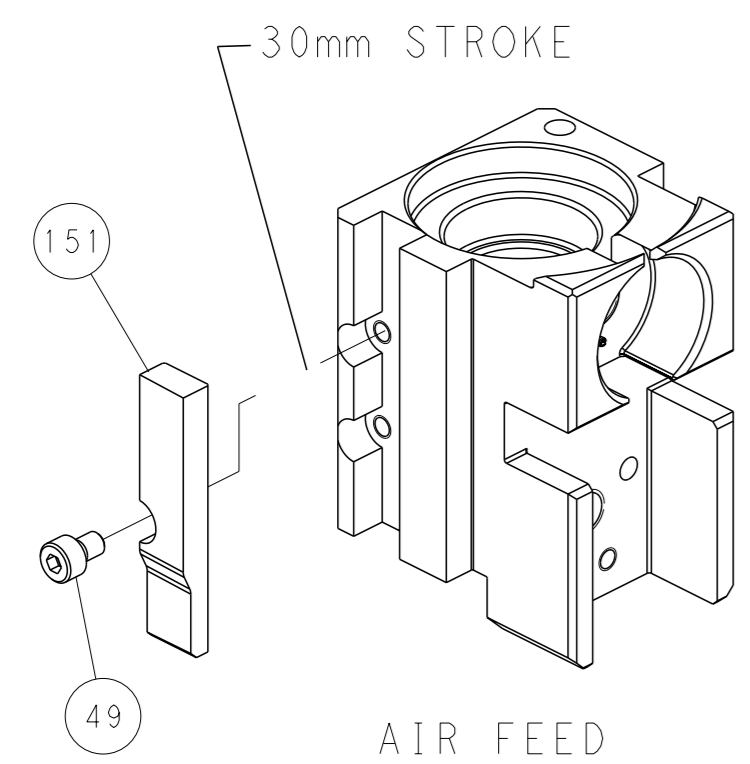
FEED TYPE PNEUMATIC



FEED SPRING SETTING POSITION (SHOWN FROM REAR SIDE)



CAM POSITION



PACIFIC VERSION
 Shown on sheets 3 of 4 & 4 of 4
 (Atlantic version shown on sheets 1 of 4 & 2 of 4)

| | | | | |
|--|--|--|-------------------------------------|---|
| <small>THIS DRAWING IS A CONTROLLED DOCUMENT FOR TYCO ELECTRONICS CORPORATION. IT IS SUBJECT TO CHANGE AND THE CONTROLLING ORGANIZATION SHOULD BE CONTACTED FOR THE LATEST REVISION.</small> | | OWN: R. O. WILSON CHK: K. J. STAKEM APVD: J. L. ELBIN | 26DEC2014 29DEC2014 29DEC2014 | TE Connectivity Harrisburg, PA 17105-3608 |
| DIMENSIONS: mm | | TOLERANCES UNLESS OTHERWISE SPECIFIED: 0 PLC ± 1 PLC ± 2 PLC ± 3 PLC ± 4 PLC ± ANGLES FINISH ± | | NAME: Ocean Side Feed Applicator SIZE: A1 CAGE CODE: 00779 DRAWING NO: 2151991 |
| MATERIAL: | | WEIGHT: | | RESTRICTED TO: |
| Customer Accessible Production Drawing | | SCALE: 1:2 | | SHEET 4 OF 4 REV B1 |