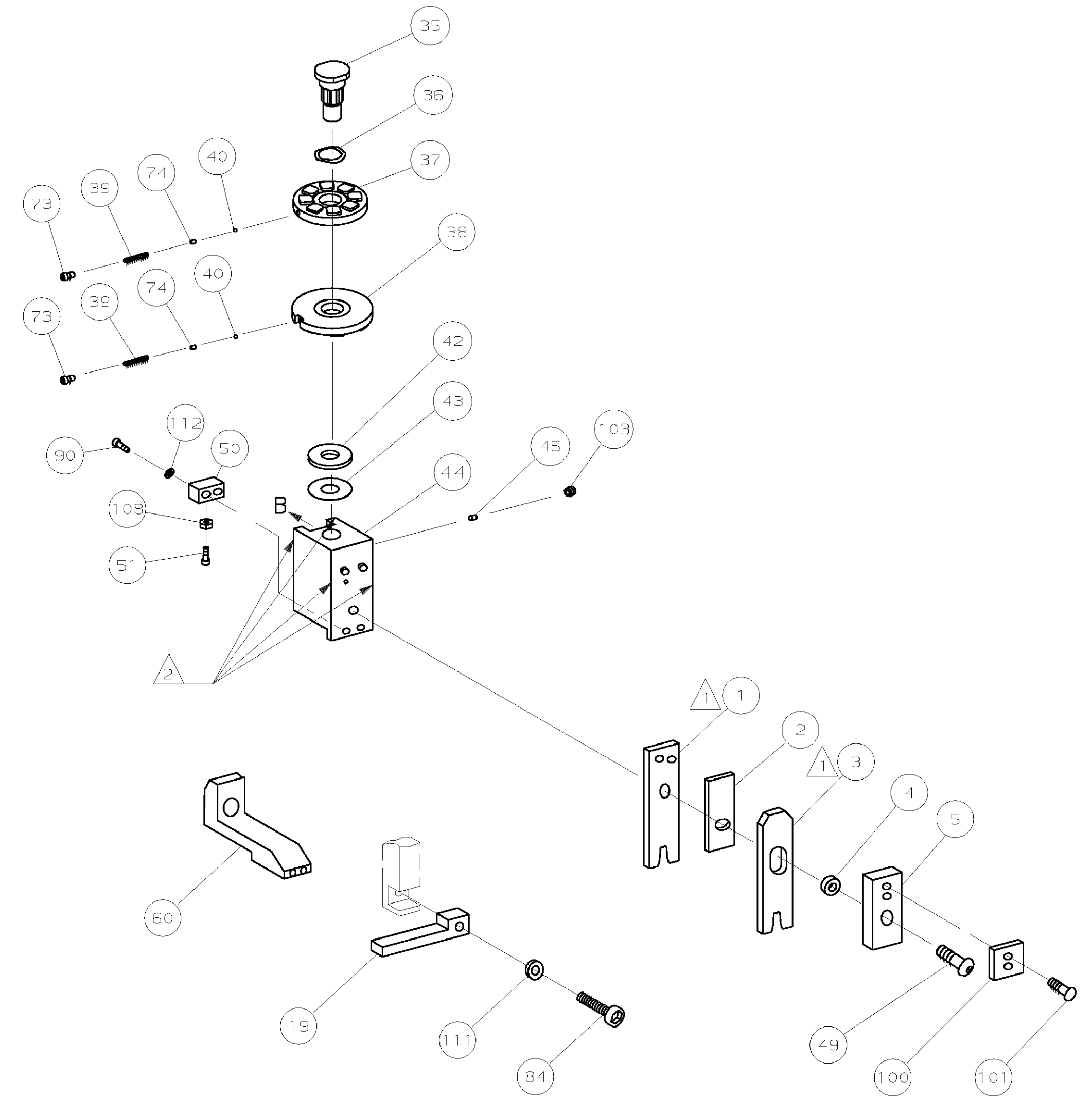
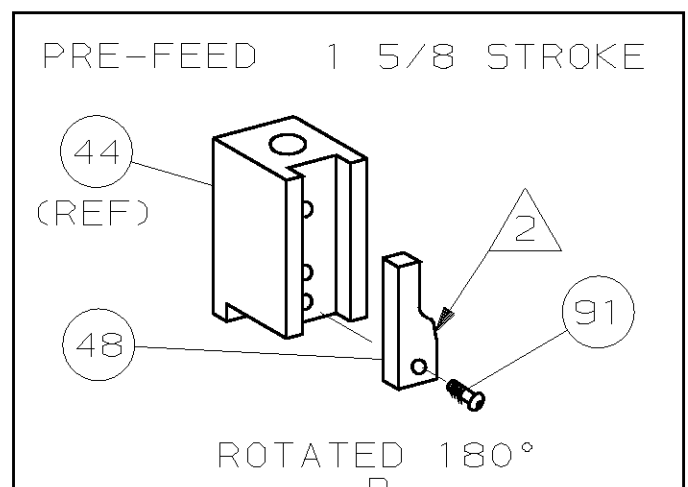
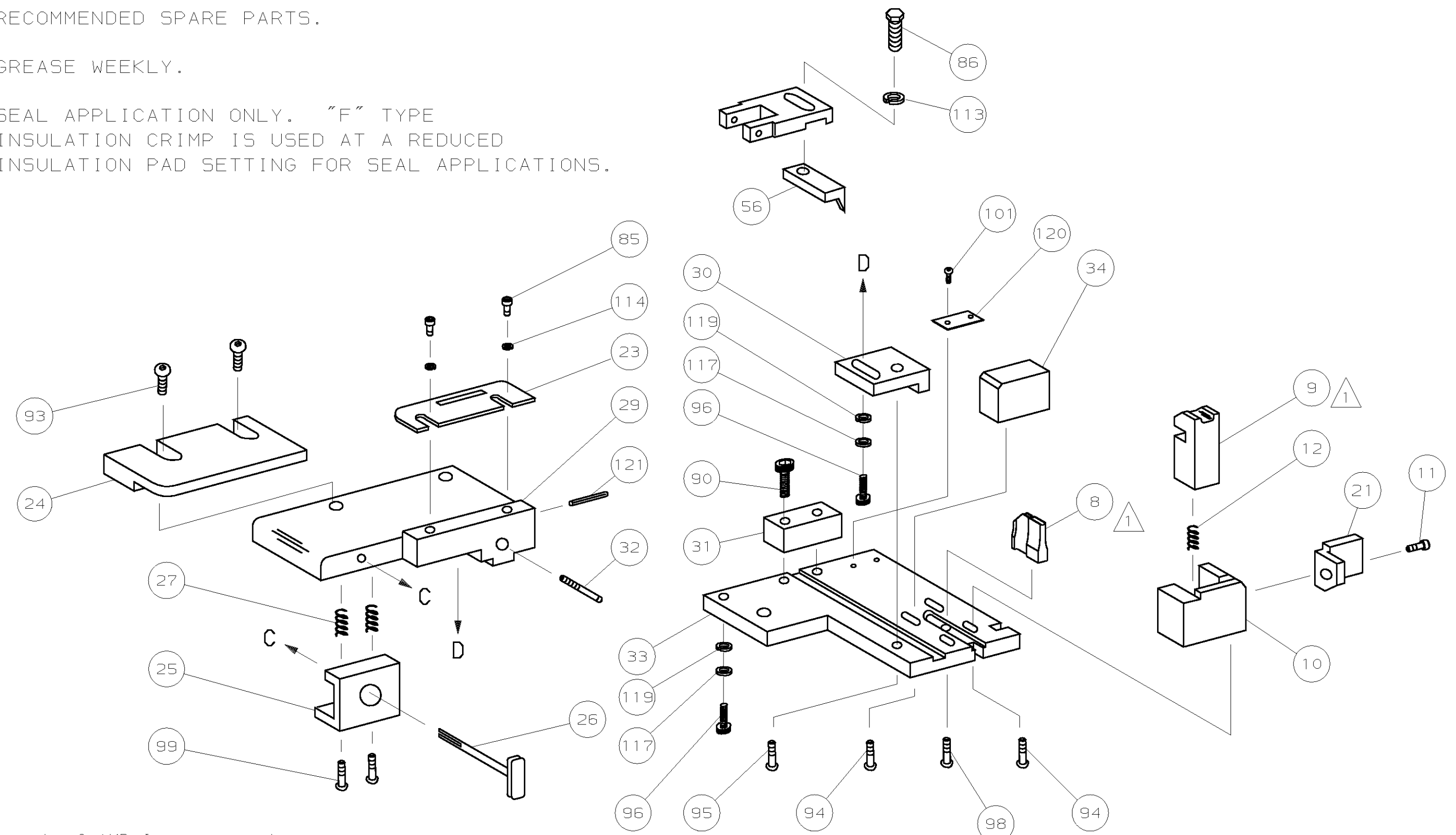


THIS DRAWING IS A CONTROLLED DOCUMENT.



- NOTES:
- 1 RECOMMENDED SPARE PARTS.
 - 2 GREASE WEEKLY.
 - 3 SEAL APPLICATION ONLY. "F" TYPE INSULATION CRIMP IS USED AT A REDUCED INSULATION PAD SETTING FOR SEAL APPLICATIONS.



| QTY | PART NO | DESCRIPTION | ITEM NO |
|-----|-----------|------------------------------------|---------|
| | | | 124 |
| | | | 123 |
| | | | 122 |
| 1 | 4-21028-0 | PIN,SLT SPR(.093x.75)ST GUIDE PL | 121 |
| 1 | 690701-2 | PLATE SERIAL NUMBER | 120 |
| 2 | 21899-2 | WASHER,FLAT(NO.10) S.G. ADJ. BLOCK | 119 |
| | | | 118 |
| 1 | 21024-5 | WASHER,LOCK(NO.10)ADJ BLOCK | 117 |
| | | | 116 |
| | | | 115 |
| | | | 114 |
| 2 | 21024-2 | WASHER,LOCK(NO.4)FRONT STRIP GUIDE | 114 |
| REF | 21024-4 | WASHER,LOCK(NO.8)FEED FINGER | 113 |
| 2 | 21024-4 | WASHER,LOCK(NO.8)DEP-HOLD | 112 |
| REF | 21024-4 | WASHER,LOCK(NO.8)STRIPPER | 111 |
| | | | 110 |
| | | | 109 |
| 1 | 21018-5 | NUT,HEX(NO.6)HOLDDOWN | 108 |
| | | | 107 |
| | | | 106 |
| | | | 105 |
| 1 | 21009-2 | SCR,SKT SET(1/4-20x.25LOC-WEL)RAM | 103 |
| | | | 104 |
| 4 | 21017-2 | SCR,DRIVE(#2x.19)ID PLATE | 101 |
| 1 | 819347-1 | PLATE, ID | 100 |
| 2 | 2-21002-9 | SCR,BHC(10-32x.75)DRAG | 99 |
| 1 | 22733-8 | SCR,BHC(8-32x.38LOC-WEL)ANVIL | 98 |
| | | | 97 |
| 1 | 3-21000-8 | SCR,SKT CAP(10-32x.88)MOUNTING | 96 |
| 1 | 2-22733-1 | SCR,BHC(10-32x.50)SG ADJ BLOCK | 95 |
| 4 | 22733-9 | SCR,BHC(8-32x.50)SHEAR-TERM SUP | 94 |
| 2 | 2-21002-2 | SCR,BHC(8-32x.50)R STRIP GUIDE | 93 |
| | | | 92 |
| 1 | 1-21002-7 | SCR,BHC(6-32x.50)CAM | 91 |
| 4 | 2-21000-7 | SCR,SKT CAP(8-32x.50)SCR BLOCK | 90 |
| | | | 89 |
| | | | 88 |
| | | | 87 |
| 1 | 2-22603-0 | SCR,HEX HEAD(8-32x.31)FEED FINGER | 86 |
| 2 | 1-21000-3 | SCR,SKT CAP(4-40x.25)F STRIP GUIDE | 85 |
| REF | 2-21002-1 | SCR,BHC(8-32x.38)STRIPPER | 84 |
| | | | 83 |
| | | | 82 |
| 1 | 3-21000-4 | SCR,SKT CAP(10-32x.38)SG ADJ BL | 81 |
| | | | 80 |
| | | | 79 |
| | | | 78 |
| 2 | 463310-7 | BLADE, STRIPPING (#24) | 77 |
| | | | 76 |
| | | | 75 |
| 2 | 690603-1 | SPRING, ASSIST | 74 |
| 2 | 23030-1 | SCR,SKT CAP(6-32x.25)CP DISC | 73 |
| | | | 72 |
| | | | 71 |
| | | | 70 |
| | | | 69 |
| | | | 68 |
| | | | 67 |
| | | | 66 |
| | | | 65 |
| | | | 64 |
| | | | 63 |
| | | | 62 |
| | | | 61 |
| | | | 60 |
| REF | 469484-2 | STOP, WIRE | |

| | | | |
|------------------------------|--|----------------|-----|
| REMARKS | | NO | REV |
| APPL USED ON MACHINE PART NO | | DISTRIBUTION | |
| CUSTOMER NAME | | ORIGINAL | |
| ADDRESS | | CUSTOMER COPY | |
| CITY | | FIELD ENG COPY | |

| QTY | PART NO | DESCRIPTION | ITEM NO |
|-----|---------|-------------|---------|
| | | | 59 |
| | | | 58 |
| | | | 57 |
| | | | 56 |
| | | | 55 |
| | | | 54 |
| | | | 53 |
| | | | 52 |
| | | | 51 |
| | | | 50 |
| | | | 49 |
| | | | 48 |
| | | | 47 |
| | | | 46 |
| | | | 45 |
| | | | 44 |
| | | | 43 |
| | | | 42 |
| | | | 41 |
| | | | 40 |
| | | | 39 |
| | | | 38 |
| | | | 37 |
| | | | 36 |
| | | | 35 |
| | | | 34 |
| | | | 33 |
| | | | 32 |
| | | | 31 |
| | | | 30 |
| | | | 29 |
| | | | 28 |
| | | | 27 |
| | | | 26 |
| | | | 25 |
| | | | 24 |
| | | | 23 |
| | | | 22 |
| | | | 21 |
| | | | 20 |
| | | | 19 |
| | | | 18 |
| | | | 17 |
| | | | 16 |
| | | | 15 |
| | | | 14 |
| | | | 13 |
| | | | 12 |
| | | | 11 |
| | | | 10 |
| | | | 9 |
| | | | 8 |
| | | | 7 |
| | | | 6 |
| | | | 5 |
| | | | 4 |
| | | | 3 |
| | | | 2 |
| | | | 1 |

| | | | |
|---------------------------------------|----------------------------|--|-------------------|
| CRIMPING DATA | | APPLICATOR WILL APPLY | |
| PAD LTR | CRIMP HEIGHT | WIRE SIZE | WIRE STRIP LENGTH |
| A | .027 | 24 | |
| B | .025 | 26 | |
| C | .031 | 22 | |
| D | NOT USED | | |
| CRIMP SIZE | TYPE | FEED | APPL INST |
| WIRE .048 | F | .433 | AI - |
| INSUL .080 | F | | |
| WIRE RANGE 26-22 | INSULATION RANGE .047-.068 | MACHINE NO 463345-1 | |
| REMARKS | | | |
| SIMTMO 567066-2 | | | |
| AMP INCORPORATED | | Harrisburg, Pa. | |
| ECN 0150-1034-03 | TE 9-03 | DR 12/6/88 | APP 8/17/93 |
| 0150-7850-97 | TB 7-97 | P. MATHIAS | A. BEBOLICK |
| 0150-5344-94 | TB 4-94 | CHK 8/17/93 | REL 3/9/92 |
| EC 0150-4739-93 | CE 8/93 | A. CHECKER | B. McPHERSON |
| REVISED | | 2/92 | |
| AMPOMATIC STRIPPER CRIMPER APPLICATOR | | SIDE FEED (MINI UNIVERSAL MATE-N-LOK PIN & SOCKET) | |

THIS DRAWING IS UNCLASSIFIED INFORMATION. IT IS HEREBY RELEASED TO YOU ON THE CONDITION THAT YOU WILL NOT DISCLOSE OR REPRODUCE THIS INFORMATION IN ANY MANNER WITHOUT THE WRITTEN AUTHORIZATION OF AMP INCORPORATED, HARRISBURG, PA. ALL RIGHTS RESERVED.