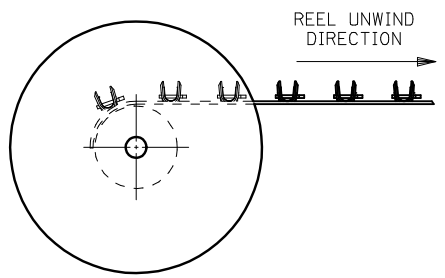
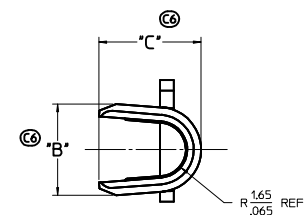
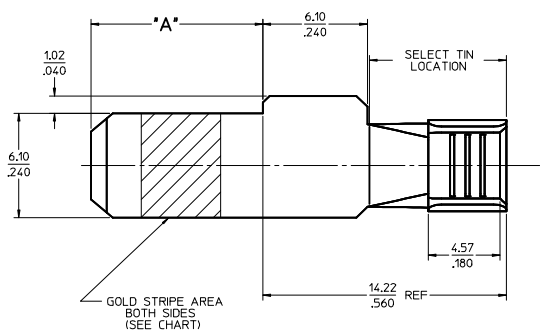
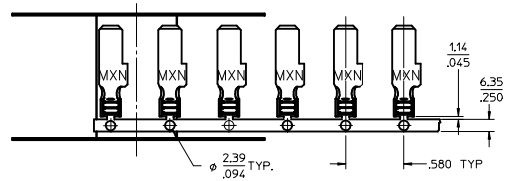
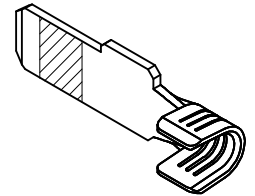


| PART NUMBER | PLATING | RECOMMENDED WIRE SIZE | DIM "A" BLADE LENGTH | DIM "B" WIDTH | DIM "C" HEIGHT | RECOMMENDED CRIMP APPLICATOR | PRODUCT STATUS |
|-------------|---|-----------------------|----------------------|--------------------------|--------------------------|------------------------------|----------------|
| 44262-6520 | 30μ INCHES SELECT GOLD STRIPE OVER 50μ INCHES NICKEL OVERALL WITH 80-160μ INCHES SELECT TIN | 8 AWG (2) 12 AWG | 10.03/.395 | N/A | N/A | 63832-6300 | NOT TOOLED |
| 44262-6521 | | | 11.56/.455 | | | | |
| 44262-6522 | | | 13.08/.515 | | | | |
| 44262-6310 | 80-160μ INCHES TIN OVERALL OVER 50μ INCHES NICKEL OVERALL | 10-12 AWG | 10.03/.395 | 5.33+-.025 .210+-.010 | 5.97+-.050 .235+-.020 | 63832-6000 | TOOLED |
| 44262-6311 | | | 11.56/.455 | | | | |
| 44262-6312 | | | 13.08/.515 | | | | |
| 44262-6320 | 30μ INCHES SELECT GOLD STRIPE OVER 50μ INCHES NICKEL OVERALL WITH 80-160μ INCHES SELECT TIN | (2) 14 AWG | 10.03/.395 | 5.21+-.050 .205+-.020 | | 63832-6100 | |
| 44262-6321 | | | 11.56/.455 | | | | |
| 44262-6322 | | | 13.08/.515 | | | | |
| 44262-6420 | 30μ INCHES SELECT GOLD STRIPE OVER 50μ INCHES NICKEL OVERALL WITH 80-160μ INCHES SELECT TIN | 14-16 AWG | 10.03/.395 | | | | |
| 44262-6421 | | | (2) 16 AWG | | | | |
| 44262-6422 | | | (2) 18 AWG | | | | |

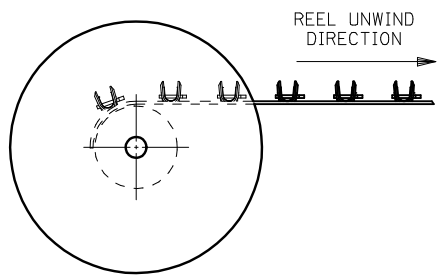
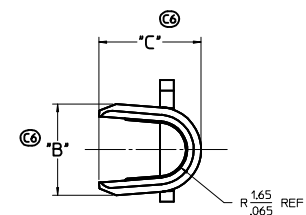
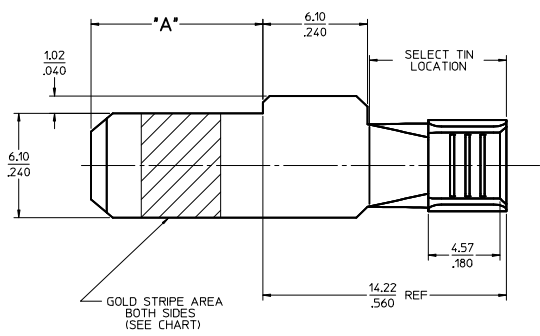
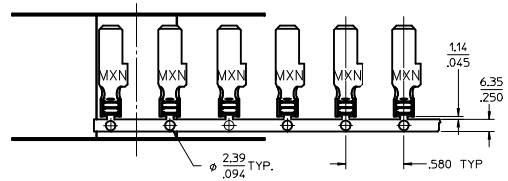
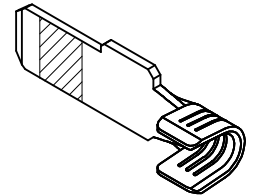
- NOTES:
- MATERIAL: COPPER ALLOY .032 IN THICK
 - FINISH: PER MOLEX PLATING SPECIFICATION ES-88 - SEE CHART
 - SEE CHART FOR CRIMP APPLICATOR NUMBER
 - FOR CRIMP TOOLING CONTACT MOLEX OR VISIT THE MOLEX WEBSITE AT WWW.MOLEX.COM
 - STD PACKAGE SIZE: 2,500 PARTS/REEL
 - SEE PRODUCT SPECIFICATION: PS-44262-001 FOR MORE INFORMATION.
 - PARTS ARE RoHS COMPLIANT
 - THIS PART MATES WITH RECEPTACLE (FEMALE) POWER CONTACT 44262-43** (SEE SD-44262-100)
 - FOR CRIMP SET UP INFORMATION SEE MOLEX APPLICATION DOCUMENT:
8 AWG - ATS-638326300
10/12 AWG - ATS-638326000
14/16 AWG - ATS-638326100



| | | | | | | | | |
|--|--------------------------------------|---|-----------------------|---------------------------------|--|-------------------------------------|----------------------------|--|
| ADD 3 TIN P/N'S EEC NO: C8 DRAWN: JSCHAFER CHKD: APPR: | QUALITY SYMBOLS ∇=0 ∇=0 ∇=0 | GENERAL TOLERANCES (UNLESS SPECIFIED): mm INCH | | DIMENSION STYLE MM/IN | SCALE 5:1 | DESIGN UNITS INCH | THIRD ANGLE PROJECTION | |
| | | 4 PLACES ±.010 ±.010 3 PLACES ±.025 ±.010 2 PLACES ±0.25 ±.010 1 PLACE ±0.25 ±.010 | DRAWN BY BKOSTIC | DATE 2006/11/14 | TERMINAL - BLADE POWER TERMINAL | | | |
| | | ANGULAR ±1/2° | CHECKED BY BKOSTIC | DATE 2006/11/14 | MOLEX INCORPORATED | | | |
| | | DRAFT WHERE APPLICABLE MUST REMAIN WITHIN DIMENSIONS | APPROVED BY APATEL | DATE 2006/11/14 | MATERIAL NO. SEE CHART | DOCUMENT NO. SD-44262-026 | SHEET NO. 1 OF 1 | |

| PART NUMBER | PLATING | RECOMMENDED WIRE SIZE | DIM "A" BLADE LENGTH | DIM "B" WIDTH | DIM "C" HEIGHT | RECOMMENDED CRIMP APPLICATOR | PRODUCT STATUS |
|-------------|---|-----------------------|----------------------|--------------------------|--------------------------|------------------------------|----------------|
| 44262-6520 | 30μ INCHES SELECT GOLD STRIPE OVER 50μ INCHES NICKEL OVERALL WITH 80-160μ INCHES SELECT TIN | 8 AWG (2) 12 AWG | 10.03/.395 | N/A | N/A | 63832-6300 | NOT TOOLED |
| 44262-6521 | | | 11.56/.455 | | | | |
| 44262-6522 | | | 13.08/.515 | | | | |
| 44262-6310 | 80-160μ INCHES TIN OVERALL OVER 50μ INCHES NICKEL OVERALL | 10-12 AWG | 10.03/.395 | 5.33+-.025 .210+-.010 | 5.97+-.050 .235+-.020 | 63832-6000 | TOOLED |
| 44262-6311 | | | 11.56/.455 | | | | |
| 44262-6312 | | | 13.08/.515 | | | | |
| 44262-6320 | 30μ INCHES SELECT GOLD STRIPE OVER 50μ INCHES NICKEL OVERALL WITH 80-160μ INCHES SELECT TIN | (2) 14 AWG | 10.03/.395 | 5.21+-.050 .205+-.020 | | 63832-6100 | |
| 44262-6321 | | | 11.56/.455 | | | | |
| 44262-6322 | | | 13.08/.515 | | | | |
| 44262-6420 | 30μ INCHES SELECT GOLD STRIPE OVER 50μ INCHES NICKEL OVERALL WITH 80-160μ INCHES SELECT TIN | 14-16 AWG | 10.03/.395 | | | | |
| 44262-6421 | | | (2) 16 AWG | | | | |
| 44262-6422 | | | (2) 18 AWG | | | | |

- NOTES:
- MATERIAL: COPPER ALLOY .032 IN THICK
 - FINISH: PER MOLEX PLATING SPECIFICATION ES-88 - SEE CHART
 - SEE CHART FOR CRIMP APPLICATOR NUMBER
 - FOR CRIMP TOOLING CONTACT MOLEX OR VISIT THE MOLEX WEBSITE AT WWW.MOLEX.COM
 - STD PACKAGE SIZE: 2,500 PARTS/REEL
 - SEE PRODUCT SPECIFICATION: PS-44262-001 FOR MORE INFORMATION.
 - PARTS ARE RoHS COMPLIANT
 - THIS PART MATES WITH RECEPTACLE (FEMALE) POWER CONTACT 44262-43** (SEE SD-44262-100)
 - FOR CRIMP SET UP INFORMATION SEE MOLEX APPLICATION DOCUMENT:
8 AWG - ATS-638326300
10/12 AWG - ATS-638326000
14/16 AWG - ATS-638326100



| ADD 3 TIN P/N'S IEC NO: C8 DRAWN: JSCHAFER CHKD: APPR: | QUALITY SYMBOLS ∇=0 ∇=0 ∇=0 | GENERAL TOLERANCES (UNLESS SPECIFIED) <table border="1"> <tr> <th></th> <th>mm</th> <th>INCH</th> </tr> <tr> <td>4 PLACES</td> <td>±.010</td> <td>±.0004</td> </tr> <tr> <td>3 PLACES</td> <td>±.010</td> <td>±.0004</td> </tr> <tr> <td>2 PLACES</td> <td>±0.25</td> <td>±.010</td> </tr> <tr> <td>1 PLACE</td> <td>±0.25</td> <td>±.010</td> </tr> </table> ANGULAR ±1/2° DRAFT WHERE APPLICABLE MUST REMAIN WITHIN DIMENSIONS | | mm | INCH | 4 PLACES | ±.010 | ±.0004 | 3 PLACES | ±.010 | ±.0004 | 2 PLACES | ±0.25 | ±.010 | 1 PLACE | ±0.25 | ±.010 | DIMENSION STYLE MM/IN DRAWN BY: BKOSTIC CHECKED BY: BKOSTIC APPROVED BY: APATEL DATE: 2006/11/14 DATE: 2006/11/14 DATE: 2006/11/14 | SCALE: 5:1 DESIGN UNITS: INCH THIRD ANGLE PROJECTION | TITLE: TERMINAL - BLADE POWER TERMINAL |
|---|--------------------------------------|--|--------|----|------|----------|-------|--------|----------|-------|--------|----------|-------|-------|---------|-------|-------|--|--|---|
| | | mm | INCH | | | | | | | | | | | | | | | | | |
| | 4 PLACES | ±.010 | ±.0004 | | | | | | | | | | | | | | | | | |
| | 3 PLACES | ±.010 | ±.0004 | | | | | | | | | | | | | | | | | |
| 2 PLACES | ±0.25 | ±.010 | | | | | | | | | | | | | | | | | | |
| 1 PLACE | ±0.25 | ±.010 | | | | | | | | | | | | | | | | | | |
| MATERIAL NO: SEE CHART DOCUMENT NO: SD-44262-026 | MOLEX INCORPORATED | SHEET NO: 1 OF 1 | | | | | | | | | | | | | | | | | | |
| THIS DRAWING CONTAINS INFORMATION THAT IS PROPRIETARY TO MOLEX INCORPORATED AND SHOULD NOT BE USED WITHOUT WRITTEN PERMISSION | | | | | | | | | | | | | | | | | | | | |
| | | | | | | | | | | | | | | | | | | | | |