
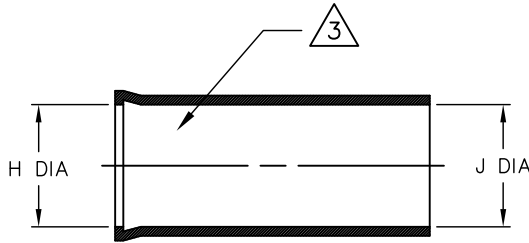


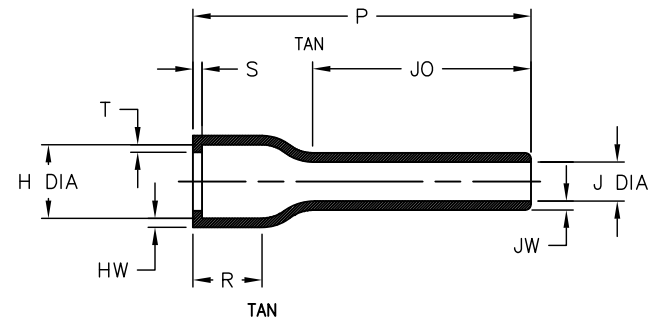
REVISIONS		
LTR	DESCRIPTION	DATE
B	REVISED PER ECO-11-002238	01/31/2011

**NOTES**

- ALL DIMENSIONS ARE IN INCHES  
[MILLIMETERS]
- DIMENSIONS APPEARING IN TABLE ARE AS FOLLOWS:  
a - AS SUPPLIED  
b - AFTER UNRESTRICTED RECOVERY
-  COATING (ADHESIVE): IS OPTIONAL AS SUPPLIED DIMENSIONS APPEARING IN TABLE ARE FOR UNCOATED PARTS. WHEN COATING IS ADDED, ENTRY DIAMETER WILL BE REDUCED BY .06 [1.5] MAX.

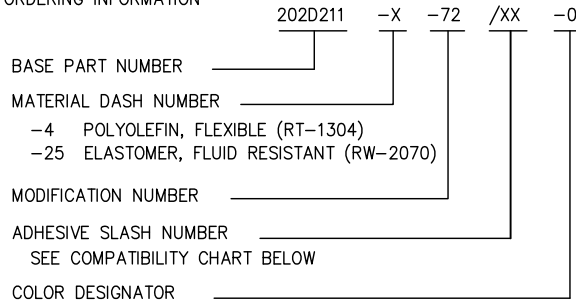


AS SUPPLIED



AFTER UNRESTRICTED RECOVERY

4. ORDERING INFORMATION



**TABLE OF DIMENSIONS**

PART DESCRIPTION	H		J		P ±10% b	R REF b	S REF b	T REF b	JO ±10% b	HW ±20% b	JW ±20% b
	MIN	MAX	MIN	MAX							
	a	b	a	b							
202D211-X-72	.88 [22,4]	.45 [11,4]	.88 [22,4]	.25 [6,3]	2.50 [63,5]	.46 [11,7]	.12 [3,0]	.04 [1,0]	1.73 [43,9]	.06 [1,52]	.045 [1,1]

If this document is printed it becomes uncontrolled. Check for the latest revision

**CUSTOMER DRAWING**

**COMPATIBILITY CHART**

MATERIAL DASH NO.	ADHESIVE (COATING) SLASH NUMBER	ADHESIVE (COATING) S NUMBER
-4	/42; /86	S-1017; S-1048
-25	N/A	N/A

UNLESS OTHERWISE SPECIFIED DIMENSIONS ARE INCHES. METRIC DIMENSIONS ARE IN BRACKETS.

DECIMAL TOLERANCES  
.XXX ± 0.005 [0.13 mm]  
.XX ± 0.01 [0.25 mm]  
.X ± 0.1 [0.50 mm]

ANGLE TOLERANCE  
.X ± 1 DEG.

TYCO ELECTRONICS RESERVES THE RIGHT TO AMEND THIS DRAWING AT ANY TIME. USERS SHOULD EVALUATE THE SUITABILITY OF THE PRODUCT FOR THEIR APPLICATION.

DRAWN

UNGUYEN

APPROVED

DHURRELL

THIRD ANGLE PROJECTION



TITLE  
**BOOT, STRAIGHT, WITH LIP**

SIZE B CODE IDENT. NO. 06090 DWG. NO. 202D211-X-72