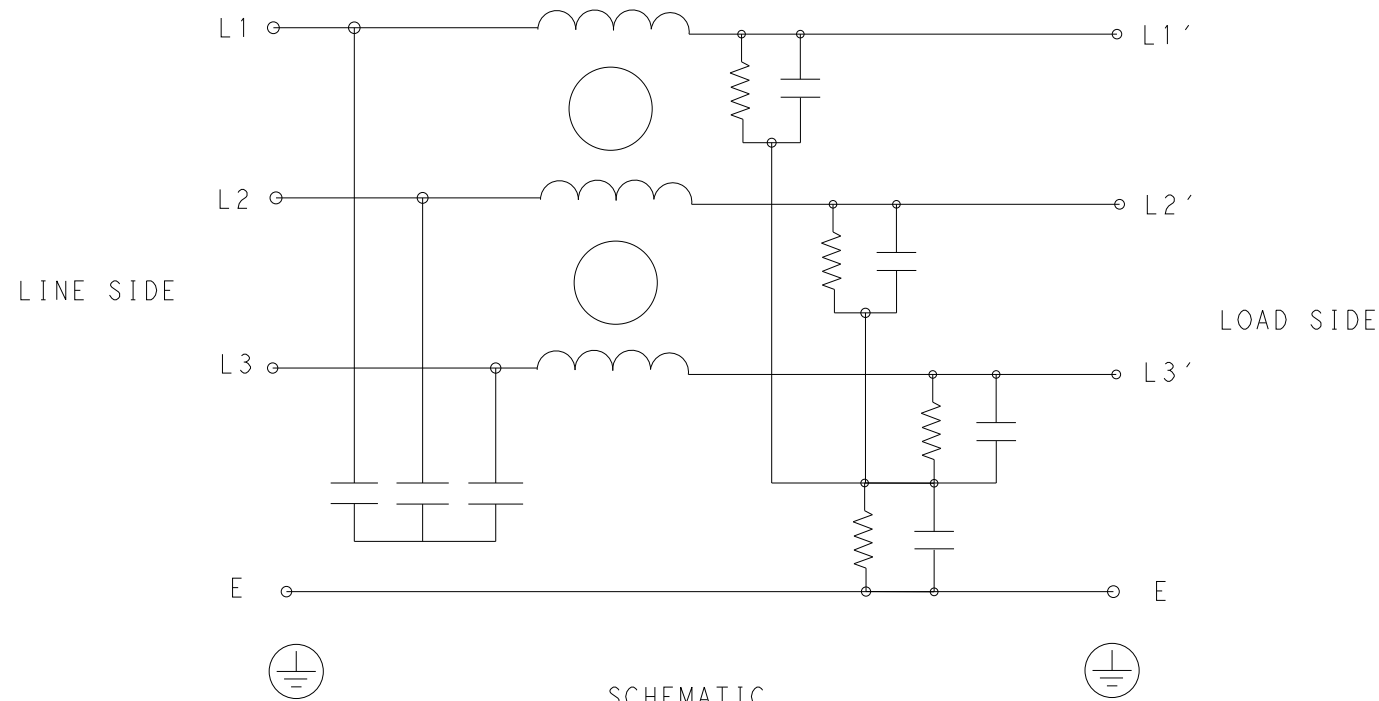


REVISIONS

| P | LTR | DESCRIPTION | DATE | DWN | APVD |
|---|-----|-----------------|-----------|-----|------|
| | A | INITIAL RELEASE | 06ARP2021 | BS | CB |
| | | | | | |
| | | | | | |



SAFETY ORGANIZATIONS
 THIS FILTER WILL BE FORMALLY RECOGNIZED, CERTIFIED OR APPROVED BY THE LISTED AGENCY. THEREFORE, ALL TEST/REQUIREMENTS SPECIFIED IN THE LATEST REVISION OF THE FOLLOWING AGENCY STANDARDS WILL BE MET:

UL APPROVED 7A 520V 50Hz/60Hz 40°C
 CSA APPROVED 7A 520V 50Hz/60Hz 40°C

OPERATING SPECIFICATION
 LINE CURRENT/VOLTAGE: 7A, 520VAC
 LINE FREQUENCY: 50/60Hz

MAXIMUM LEAKAGE CURRENT: 5mA @ 230VAC, 50Hz
 OPERATING AMBIENT TEMPERATURE RANGE @ RATED CURRENT: -25°C TO +40°C

IN AN AMBIENT, T_a, HIGHER THAN 40°C, THE MAXIMUM OPERATING CURRENT, I_o, IS AS FOLLOWS:

$$I_o = I_r \sqrt{\frac{85 - T_a}{45}}$$

RELIABILITY SPECIFICATIONS
 STORAGE TEMPERATURE: -40°C TO +85°C
 HUMIDITY: 21 DAYS @ 40°C AND 95% RH

TEST SPECIFICATIONS
 INDUCTANCE, NOMINAL: 5mH
 CAPACITANCE @ 1kHz
 LINE TO GROUND, NOMINAL: 0.3µF
 LINE TO LINE, NOMINAL: 1µF

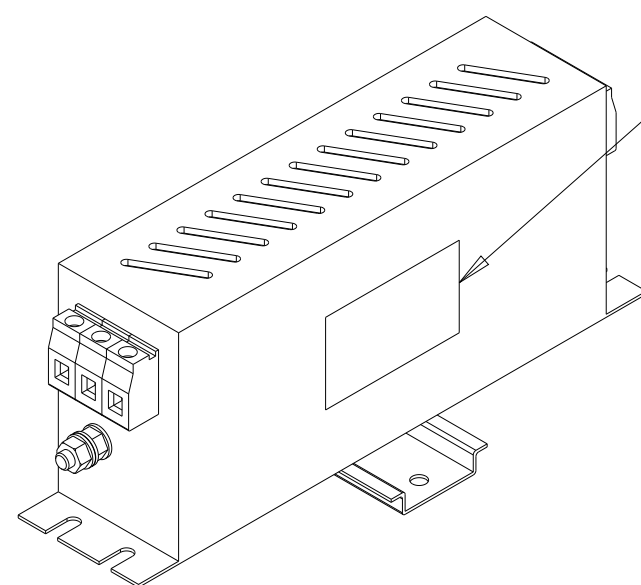
DISCHARGE RESISTOR
 L/G I.R. 680KΩ 1W
 L/L I.R. 3MΩ 1W
 L/N I.R. XXX
 N/G I.R. XXX
 IR (NO DISCHARGE RESISTOR) 20°C, 50% RH AND 100VDC, MIN: 6MΩ

RECOMMENDED RECEIVING INSPECITON HIPOI
 LINE TO GROUND FOR 1 MINUTE: 2856VDC
 LINE TO LINE FOR 1 MINUTE: 2236VDC

FILTER APPROVAL
 THE BEST WAY TO SELECT AND QUALIFY A FILTER IS FOR YOUR ENGINEERING TO TEST THE UNIT IN YOUR EQUIPMENT.

TYPICAL INSERTION LOSS
 COMMON MODE 50/50Ω; DIFFERENTIAL MODE 50/50Ω

| MHz | 0.01 | 0.05 | 0.15 | 0.5 | 1 | 3 | 5 | 10 | 30 |
|-----|------|------|------|-----|----|----|----|----|----|
| CM | 54 | 56 | 48 | 71 | 82 | 70 | 65 | 40 | 16 |
| DM | 30 | 32 | 40 | 69 | 54 | 50 | 48 | 34 | 25 |



LABEL TO TE MARKING SPECIFICATION

| | | | | |
|---|--|-------------------------------|--|----------------------------|
| THIS DRAWING IS A CONTROLLED DOCUMENT. | | DWN 06APR2021 BAPAT SAHAS | TE Connectivity | |
| DIMENSIONS: mm | | CHK 06APR2021 CHRIS BOLLE | | |
| TOLERANCES UNLESS OTHERWISE SPECIFIED: | | APVD 06APR2021 CHRIS BOLLE | NAME POWER LINE FILTER FOR DIN 35 RAIL INSTALLATION 7KEMS10BBSDDM | |
| 0 PLC ±- 1 PLC ±0.5 2 PLC ±0.40 3 PLC ±0.130 4 PLC ±0.0500 ANGLES ±- | | PRODUCT SPEC - | RESTRICTED TO - | |
| MATERIAL | | APPLICATION SPEC - | SIZE A300779 | CAGE CODE C-7-1609968-2 |
| FINISH | | WEIGHT - | SCALE 1:2 SHEET 1 OF 2 REV A | |
| - | | CUSTOMER DRAWING | | |

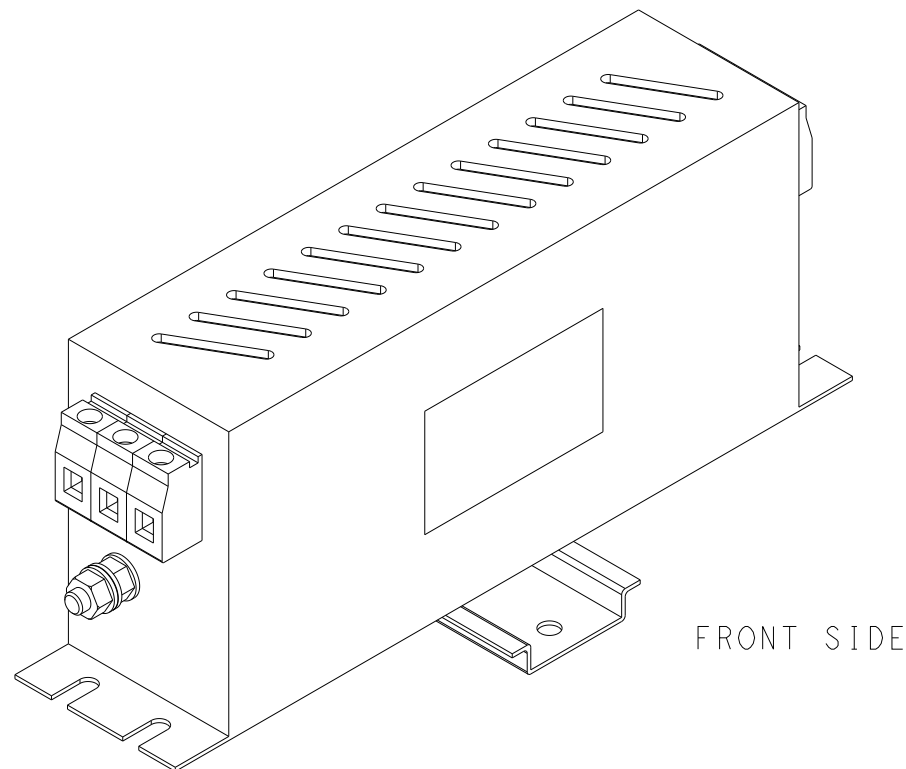
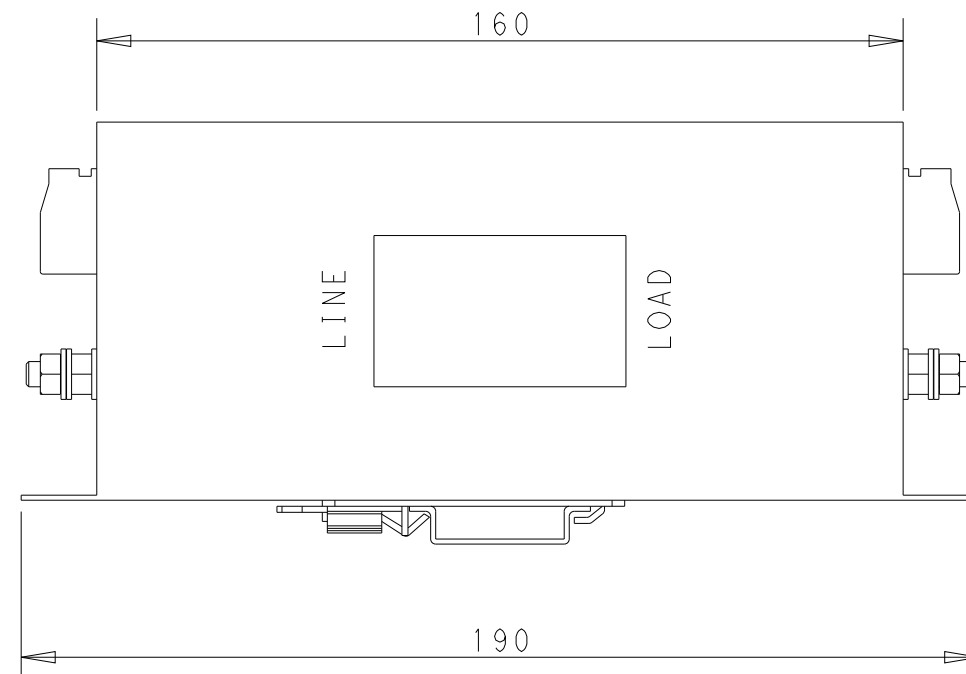
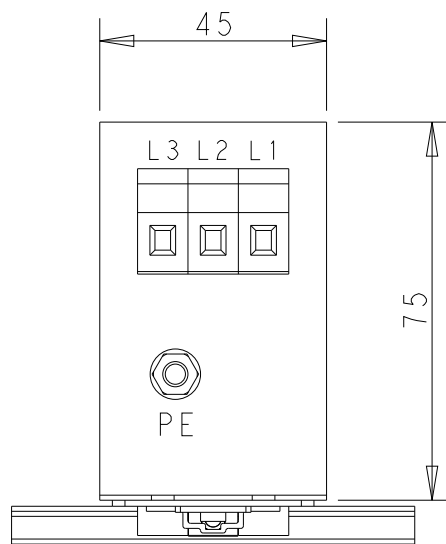
NOTE 1 GROUND CONNECTION:
 FOR ELECTRICAL SAFETY AND FILTER PERFORMANCE
 UNIT MUST HAVE A GOOD GROUND CONNECTION.
 TORQUE OUTER TERMINAL SCREWS: 0.5Nm / 4.5 in.lbs
 TORQUE GROUND NUTS: 2Nm

NOTE 2 INPUT OUTPUT CONNECTION TERMINAL
 AWG SIZE: 26-12 AWG
 WIRE SECTION: 4 mm²
 THREADED BOLT SIZE FOR GROUND: M5

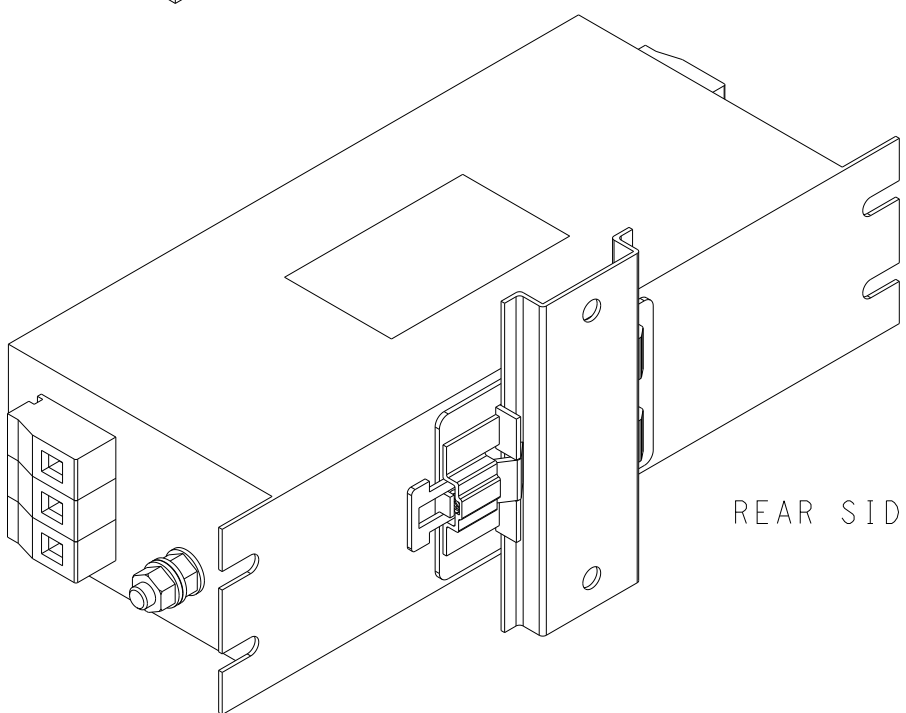
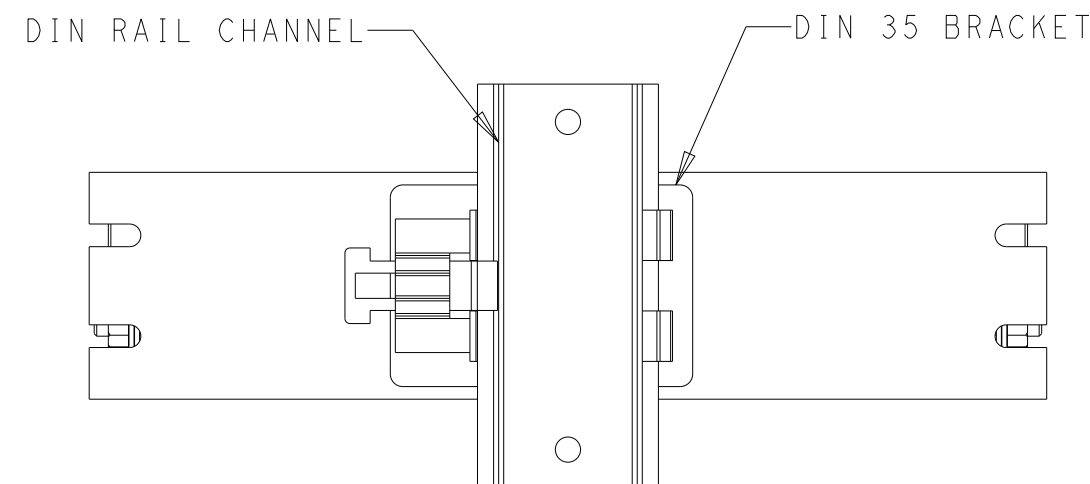
NOTE 3 SUPPLIED WITH DIN RAIL BRACKET

NOTE 4 DRAWINGS SHOWS DIN RAIL FOR
 REFERENCE ONLY


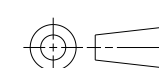
| P | LTR | DESCRIPTION | DATE | DWN | APVD |
|---|-----|-------------|------|-----|------|
| | | SEE SHEET 1 | | | |
| | | | | | |
| | | | | | |



FRONT SIDE



REAR SIDE

| | | | | |
|---|--|-------------------------------|---|--|
| THIS DRAWING IS A CONTROLLED DOCUMENT. | | DWN 06APR2021 BAPAT SAHAS |  TE Connectivity | |
| | | CHK 06APR2021 CHRIS BOLLE | | |
| DIMENSIONS: mm | | APVD 06APR2021 CHRIS BOLLE | NAME POWER LINE FILTER FOR DIN 35 RAIL INSTALLATION 7KEMS10BBSDDM | |
|  | | PRODUCT SPEC - | SIZE A300779 | |
| TOLERANCES UNLESS OTHERWISE SPECIFIED: | | APPLICATION SPEC - | DRAWING NO C-7-1609968-2 | |
| 0 PLC ±- 1 PLC ±0.5 2 PLC ±0.40 3 PLC ±0.130 4 PLC ±0.0500 ANGLES ±- | | WEIGHT - | RESTRICTED TO - | |
| MATERIAL - | | FINISH - | SCALE 2:3 | |
| | | CUSTOMER DRAWING | SHEET 2 OF 2 | |
| | | | REV A | |