

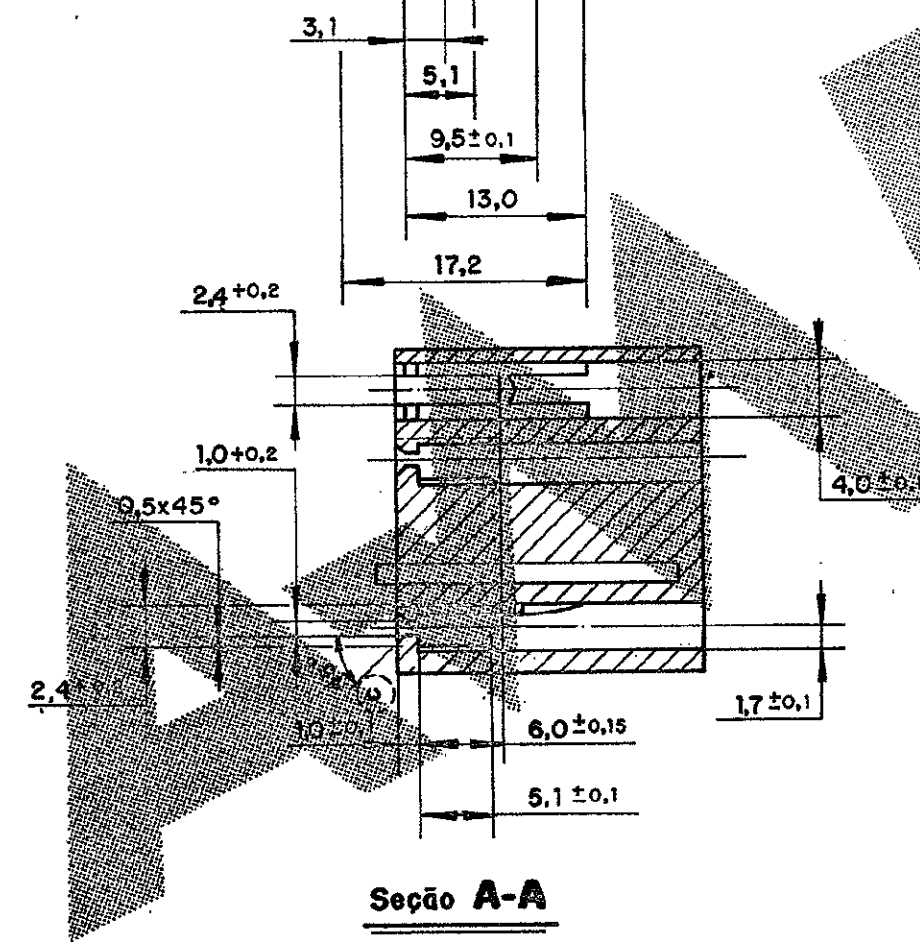
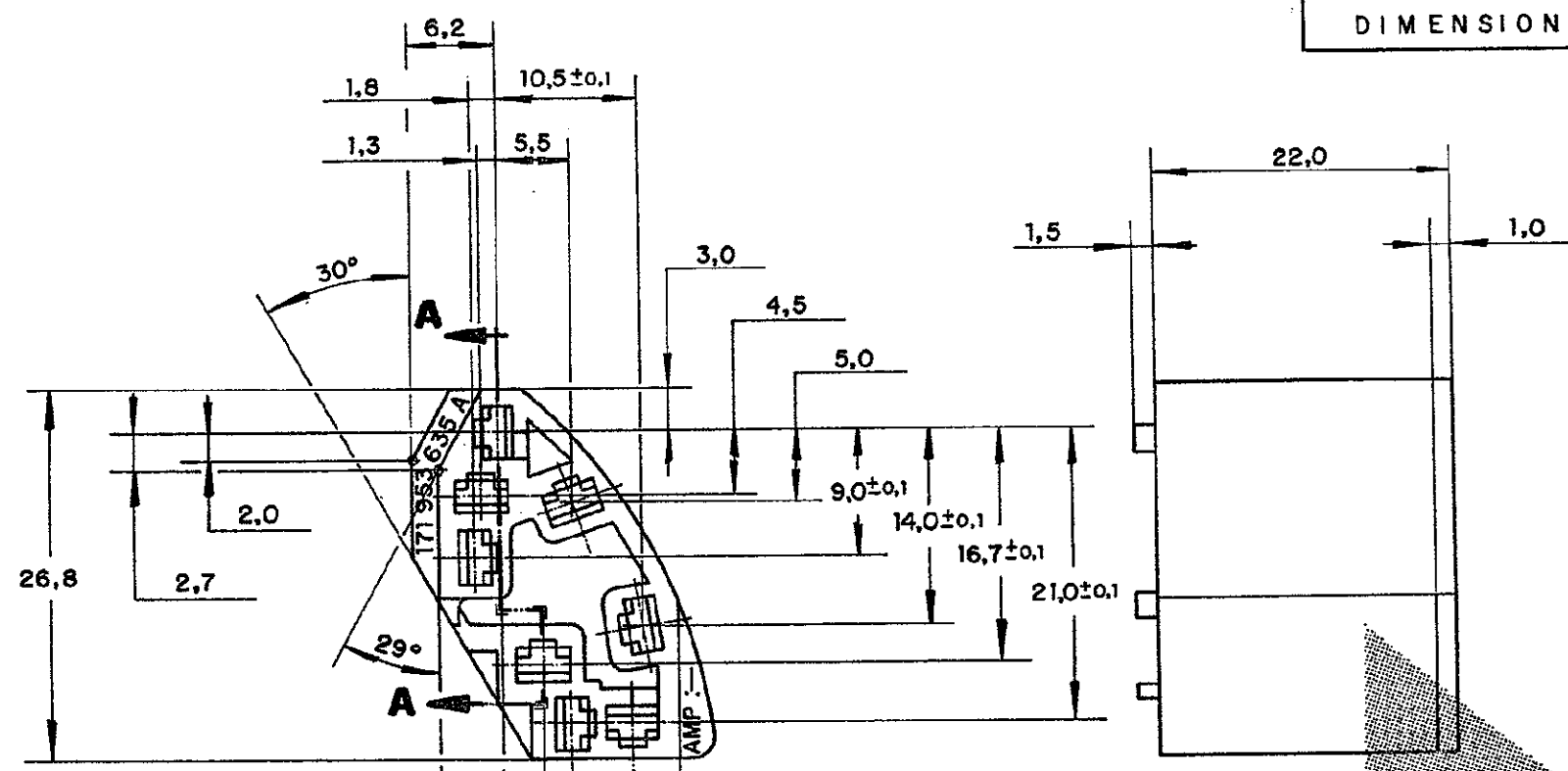
8 7 6 5 4 3 2 1

DO NOT SCALE
DIMENSIONS IN

METRIC



C 880107



△ OBSOLETE PARTS: OBSOLETE CIS STREAMLINING PER D.RENAUD/D.SINISI

△ OBSOLETE	171 953 635 - A	PRETO	NYLON 6-6	880 107 - 2
	VW PART NUMBER	NATURAL	NYLON 6-6	880 107 - 1
		COLOR	MATERIAL	PART NUMBER
CUSTOMER DWG for REFERENCE ONLY		THIS DRAWING IS UNPUBLISHED RELEASED FOR PUBLICATION		
		© COPYRIGHT 1982 BY AMP DO BRASIL LTDA S.P. ALL INTERNATIONAL RIGHTS RESERVED AMP PRODUCTS MAY BE COVERED BY U.S. AND FOREIGN PATENTS AND/OR PATENTS PENDING.		
		TOLERANCES UNLESS OTHERWISE STATED	INS. DIA. RANGE	WIRE RANGE
		DEC ± 0,5	---	---
		ANGLES ± 1°		
		DR <i>Renaudo</i>	AMP do BRASIL LTDA São Paulo, Brasil	
		11.29.82	DESCRIPTION	
		CHK. <i>DEZ/82</i>	8 WAY .110 FAST-IN-ON RECEP. HSG	
D1	REVISED PER ECO-09-026444	KK	AEG	27NOV09
D	ADIC. ANGULO DE SAIDA	M.Briz		23-JUL-90
C	ADICIONADO ANGULO DE 45°	DORI		09-06-89
B	REVISADO	G.M.	T.V.	6. 4. 84
A	ERA P82 -29187	G.M.	T.V.	11.29.82
ISS	REVISION RECORD	DR	CHK	DATE
		APP		
		A3		DWG NO C 880 107
				SHEET 1 OF 1

8 7 6 5 4 3 2 1