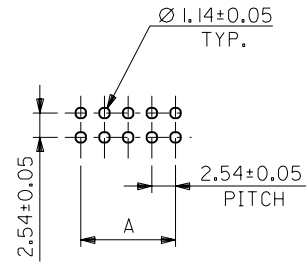


SECTION E-E

注記 NOTES

- 材質 MATERIAL
ハウジング: ガラス入りPBT UL94V-0 色: 黒
HOUSING : G.F.PBT UL94V-0 COLOR:BLACK
ピン : リン青銅
PIN : PHOSPHOR BRONZE
- メッキ仕様 PLATING
ピン : 接点部 金メッキ 0.38 μm MIN.
: CONTACT AREA GOLD 0.38 μm MIN.
半田付け部 半田メッキ 1.9 μm MIN.
SOLDER TAIL AREA TIN-LEAD 1.9 μm MIN.
下地メッキ ニッケルメッキ 1.27 μm MIN.
UNDER-PLATING NICKEL 1.27 μm MIN.

- 3. メッキ厚測定位置 MEASURING POINT FOR PLATING THICKNESS
- 4. メッキ範囲 PLATING AREA
- 6. ピン先端にて測定 MEASURE PIN TIP END

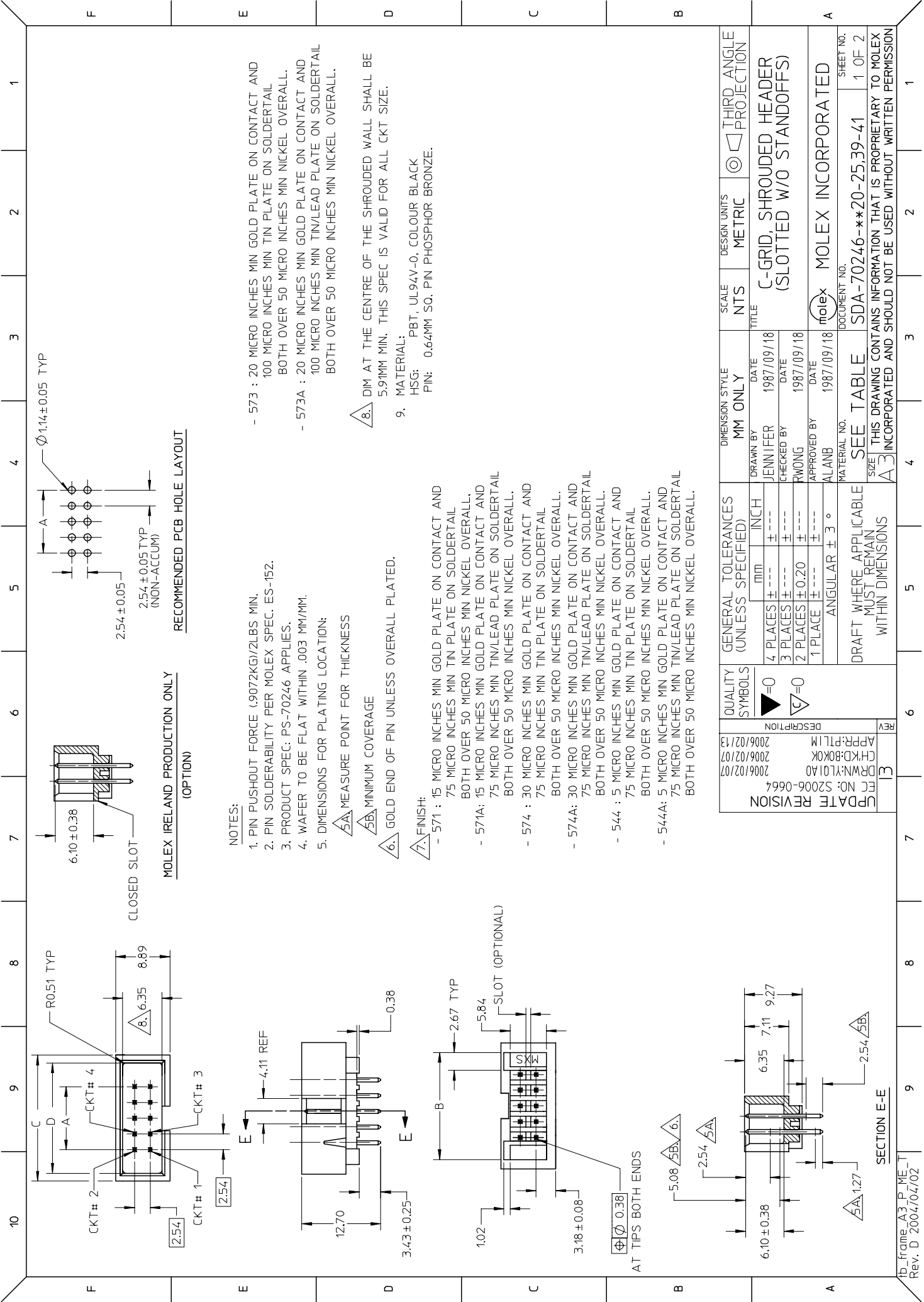


推奨基板穴寸法
RECOMMENDED P.C. BOARD HOLE LAYOUT

68.58	71.12	68.07	60.96	A-70246-5021	50
D	C	B	A	ENG. No.	種数 CKT. SIZE

材料 MATERIAL 注記参照 SEE NOTES				molex MOLEX-JAPAN CO.,LTD. 日本モレックス株式会社	
仕上げ FINISH 注記参照 SEE NOTES				REVISE ONLY ON CAD SYSTEM	
適用電線範囲 WIRE RANGE —				TITLE 名称 ASSY,C-GRID,SHROUDED HEADER	
被覆外径 INS. RANGE —				(SLOTTED WITHOUT STANDOFFS)	
DRAWN BY A. Hanayama		CHK'D BY M. Saito		DWG. NO. SDA-70246-*****	
REVISION RECORD		DATE		REV 0	
記号 LTR		変更内容		尺度 SCALE 2 - 1	
一般公差		新規作成 (150516)		DR. / M.S. / 96/06/12	
公差		RELEASED		APP'D BY / 尺度 SCALE 2 - 1	
公差		DR. / M.S. / 96/06/12		DR. / M.S. / 96/06/12	

角度 ANGLE	±3°
30以上 OVER	+0.3
10以上 30未満 UNDER	+0.25
10未満 UNDER	+0.2



MOLEX IRELAND PRODUCTION ONLY (OPTION)

RECOMMENDED PCB HOLE LAYOUT

NOTES:

1. PIN PUSHOUT FORCE (.9072KG)/2LBS MIN.
2. PIN SOLDERABILITY PER MOLEX SPEC. ES-152.
3. PRODUCT SPEC: PS-70246 APPLIES.
4. WAFER TO BE FLAT WITHIN .003 MM/MM.
5. DIMENSIONS FOR PLATING LOCATION:
 - 5A MEASURE POINT FOR THICKNESS
 - 5B MINIMUM COVERAGE
6. GOLD END OF PIN UNLESS OVERALL PLATED.
7. FINISH:
 - 571 : 15 MICRO INCHES MIN GOLD PLATE ON CONTACT AND 75 MICRO INCHES MIN TIN PLATE ON SOLDERTAIL BOTH OVER 50 MICRO INCHES MIN NICKEL OVERALL.
 - 571A : 15 MICRO INCHES MIN GOLD PLATE ON CONTACT AND 75 MICRO INCHES MIN TIN/LEAD PLATE ON SOLDERTAIL BOTH OVER 50 MICRO INCHES MIN NICKEL OVERALL.
 - 574 : 30 MICRO INCHES MIN GOLD PLATE ON CONTACT AND 75 MICRO INCHES MIN TIN PLATE ON SOLDERTAIL BOTH OVER 50 MICRO INCHES MIN NICKEL OVERALL.
 - 574A : 30 MICRO INCHES MIN GOLD PLATE ON CONTACT AND 75 MICRO INCHES MIN TIN/LEAD PLATE ON SOLDERTAIL BOTH OVER 50 MICRO INCHES MIN NICKEL OVERALL.
 - 544 : 5 MICRO INCHES MIN GOLD PLATE ON CONTACT AND 75 MICRO INCHES MIN TIN PLATE ON SOLDERTAIL BOTH OVER 50 MICRO INCHES MIN NICKEL OVERALL.
 - 544A : 5 MICRO INCHES MIN GOLD PLATE ON CONTACT AND 75 MICRO INCHES MIN TIN/LEAD PLATE ON SOLDERTAIL BOTH OVER 50 MICRO INCHES MIN NICKEL OVERALL.
8. DIM AT THE CENTRE OF THE SHROUDED WALL SHALL BE 5.9MM MIN. THIS SPEC IS VALID FOR ALL CKT SIZE.
9. MATERIAL:
 - PBT, UL94V-0, COLOUR BLACK
 - HSG: 0.64MM SQ. PIN PHOSPHOR BRONZE.

QUALITY SYMBOLS	GENERAL TOLERANCES (UNLESS SPECIFIED)	DIMENSION STYLE	SCALE	DESIGN UNITS	THIRD ANGLE PROJECTION
$\blacktriangle = 0$ $\triangle = 0$	4 PLACES ± --- INCH 3 PLACES ± --- 2 PLACES ± 0.20 ± --- 1 PLACE ± --- ANGULAR ± 3 °	MM ONLY DATE 1987/09/18 DATE 1987/09/18 DATE 1987/09/18	NTS	METRIC	
PDATE REVISION EC NO: S2006-0664 DRW: YL01A0 CHKD: BOKOK APPR: PTLIM 2006/02/07 2006/02/13	DRAFT WHERE APPLICABLE MUST REMAIN WITHIN DIMENSIONS	DRAWN BY JENNIFER CHECKED BY RWONG APPROVED BY ALANB	TITLE	C-GRID, SHROUDED HEADER (SLOTTED W/O STANDOFFS)	
REV C		MATERIAL NO. SEE TABLE SIZE THIS DRAWING CONTAINS INFORMATION THAT IS PROPRIETARY TO MOLEX INCORPORATED AND SHOULD NOT BE USED WITHOUT WRITTEN PERMISSION	DOCUMENT NO.	MOLEX INCORPORATED	SHEET NO. 1 OF 2

SECTION E-E

10	9	8	7	6	5	4	3	2	1
PART NUMBER	CKT SIZE	VOID CKT	DIM A	DIM B	DIM C	DIM D			
70246-08**	08	-	7.62	14.73	17.78	15.24			
70246-10**	10	-	10.16	17.27	20.32	17.78			
70246-12**	12	-	12.70	19.81	22.86	20.32			
70246-14**	14	-	15.24	22.35	25.40	22.86			
70246-16**	16	-	17.78	24.89	27.94	25.40			
70246-20**	20	-	22.86	29.97	33.02	30.48			
70246-24**	24	-	27.94	35.05	38.10	35.56			
70246-26**	26	-	30.48	37.59	40.64	38.10			
70246-30**	30	-	35.56	42.67	45.72	43.18			
70246-34**	34	-	40.64	47.75	50.80	48.26			
70246-40**	40	-	48.26	55.37	58.42	55.88			
70246-44**	44	-	53.34	60.45	63.50	60.96			
70246-50**	50	-	60.96	68.07	71.12	68.58			
70246-56**	56	-	68.58	75.69	78.74	76.20			
70246-60**	60	-	73.66	80.77	83.82	81.28			
70246-64**	64	-	78.74	85.85	88.90	86.36			
70246-72**	72	-	88.90	96.01	99.06	96.52			
70246-25**	26	26	30.48	37.59	40.64	38.10			

LEGEND:
A-70246 - * * * * *
CKT SIZE
PLATING OPT.
SEE TABLE FOR DETAIL

PART NUMBER	PLATING OPTION (TIN/LEAD)	PART NUMBER	PLATING OPTION (TIN)
70246-21	571A	70246-21	571
70246-22	574A	70246-22	574
70246-24	544A	70246-24	544
70246-20	573A	70246-20	573

ADD PART NUMBER	EC NO: S2006-0664	DRWN:Y1L01A0	CHKD:B0K0K	APPR:PTL1M	2006/02/07	2006/02/13	DESCRIPTION
REV							
QUALITY SYMBOLS							
= 0 = 0		GENERAL TOLERANCES (UNLESS SPECIFIED)					
		MM		INCH		DIMENSION STYLE	
		± 0.20		± 0.005		MM ONLY	
		± 0.10		± 0.003		DATE	
		± 0.05		± 0.002		DATE	
		± 0.03		± 0.001		DATE	
		ANGULAR ± 3°				APPROVED BY	
						ALANB	
						1987/09/18	
						DRAWN BY	
						JENNIFER	
						1987/09/18	
						CHECKED BY	
						RWONG	
						1987/09/18	
						TITLE	
						C-GRID, SHROUDED HEADER (SLOTTED W/O STANDOFFS)	
						SCALE	
						NTS	
						DESIGN UNITS	
						METRIC	
						THIRD ANGLE PROJECTION	
						SHEET NO.	
						2 OF 2	
						DOCUMENT NO.	
						SDA-70246-*20-25,39-41	
						MATERIAL NO.	
						MOLEX INCORPORATED	