



9400 series

Power Relay 1-pole, 8-12 FLA AC or DC Coil

UL File E75492

Users should thoroughly review the technical data before selecting a product part number. It is recommended that users also seek out the pertinent approvals files of the agencies/laboratories and review them to ensure the product meets the requirements for a given application.

Features

- Single-pole relay used extensively in HVAC applications.
- Multi-positional mounting without affecting operation.
- Convenient 0.250" (6.35 mm) quick connect terminals.

Contact Data @ 25°C

Arrangements: 1 Form X (SPST-NO-DM), 1 Form Y (SPST-NC-DB),
1 Form Z (SPDT-DM-DB) & 1 Form Z (SPDT-DM-DB)
jumped to wire as 1 Form C (SPDT).

Materials: Silver Alloy and Fine Silver.

Maximum Ratings:

Silver Alloy (Power) Contacts

All Forms: 12 FLA, 60 LRA @ 125VAC;
18A @ 125VAC, resistive;
8 FLA, 48 LRA @ 240/277VAC;
18A @ 240/277VAC, resistive.

1 Form X only: 25A @ 240/277VAC, resistive.

Fine Silver (Pilot) Contacts

All Forms: 3A, 277VAC;
125VA @ 125VAC;
250VA @ 250VAC;
277VA @ 277VAC;

Expected Life: 1 million ops., mechanical.
250,000 ops., at rated resistive load.
100,000 ops., at rated inductive load.

Initial Dielectric Strength

Initial Breakdown Voltage: 1,554 VAC between live parts and exposed non-current carrying metal parts.

Coil Data @ 25°C

Voltage: 12 & 24 VDC; 6-277 VAC, 50/60 Hz.

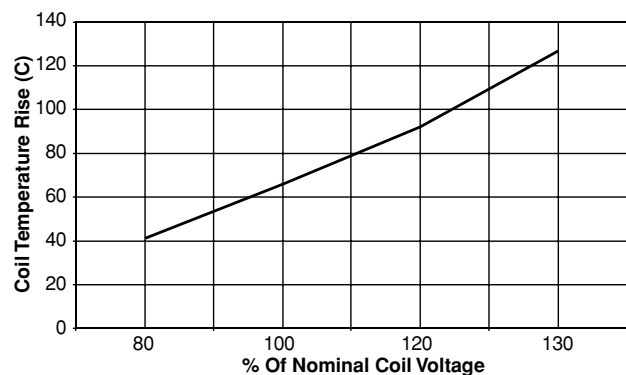
Max. Sealed Power: 4 VA (AC coils.); 3 W (DC coils).

Nominal Inrush Power: 5 VA (AC coils.); 3 W (DC coils).

Insulation Class: UL Class B (130°C).

Duty Cycle: Continuous.

Coil Temperature Rise Above Ambient



Operate Data @ 25°C

Must Operate Voltage: Approximately 85% of AC nominal coil voltage.
Approximately 75% of DC nominal coil voltage.

Environmental Data

Temperature Range: Storage and Operating: -40°C – +65°C.

Mechanical Data

Termination: 0.250" (6.35 mm) quick connects, standard. Consult factory for availability of optional 0.187" (4.75 mm) quick connects.

Weight: 2.88 oz. (82 g) approximately

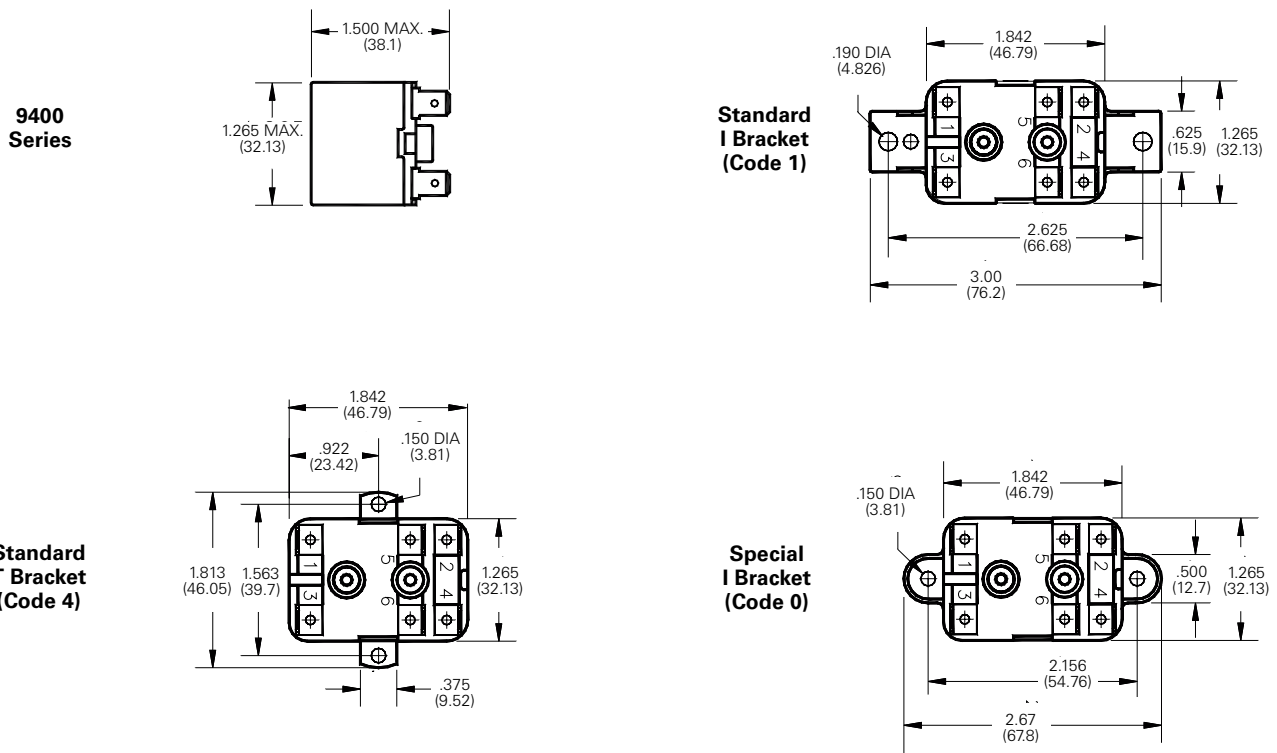
Ordering Information

Typical Part No. ▶	9400	-0	3	Q	1	999
<p>1. Series: 9400 = 1- pole, 8-12 FLA relay</p> <p>2. Mounting Bracket: 1 = Standard I Bracket with mounting holes on 2.625" (66.67mm) centers 4 = Standard T Bracket with mounting holes on 1.563" (39.70mm) centers 0 = Special I Bracket with mounting holes on 2.156" (54.76mm) centers</p> <p>3. Pole Configuration: 1 = 1 Form X (SPST-NO-DM) 3 = 1 Form Z (SPDT-DM/DB) 2 = 1 Form Y (SPST-NC-DB) 4 = 1 Form Z (SPDT-DM/DB) jumpered to wire as 1 Form C.</p> <p>4. Coil Voltage (50/60 Hz.): B = 12VDC Y = 6VAC P = 100VAC S = 200VAC V = 277VAC C = 24VDC Q = 24VAC T = 120VAC U = 208/240VAC QS = 24VAC, low VA</p> <p>5. Contact Type: 1 = Silver alloy power contacts 2 = Fine silver pilot contacts</p> <p>6. Customer ID Suffix: 999 = Standard Model 000-998 = Factory assigned customer ID</p>						

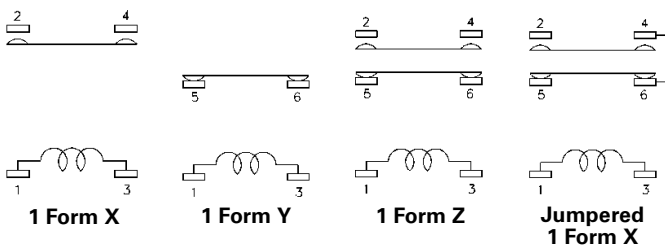
Standard part numbers listed below are more likely to be available from stock.

9400-03Q1999 9400-03T1999 9400-03U1999 9400-04Q1999 9400-04T1999 9400-04U1999

Outline Dimensions



Contact Configurations



Dimensions are shown for reference purposes only.

Dimensions are in inches over (millimeters) unless otherwise specified.

Specifications and availability subject to change.

www.tycoelectronics.com
Technical support:
Refer to inside back cover.