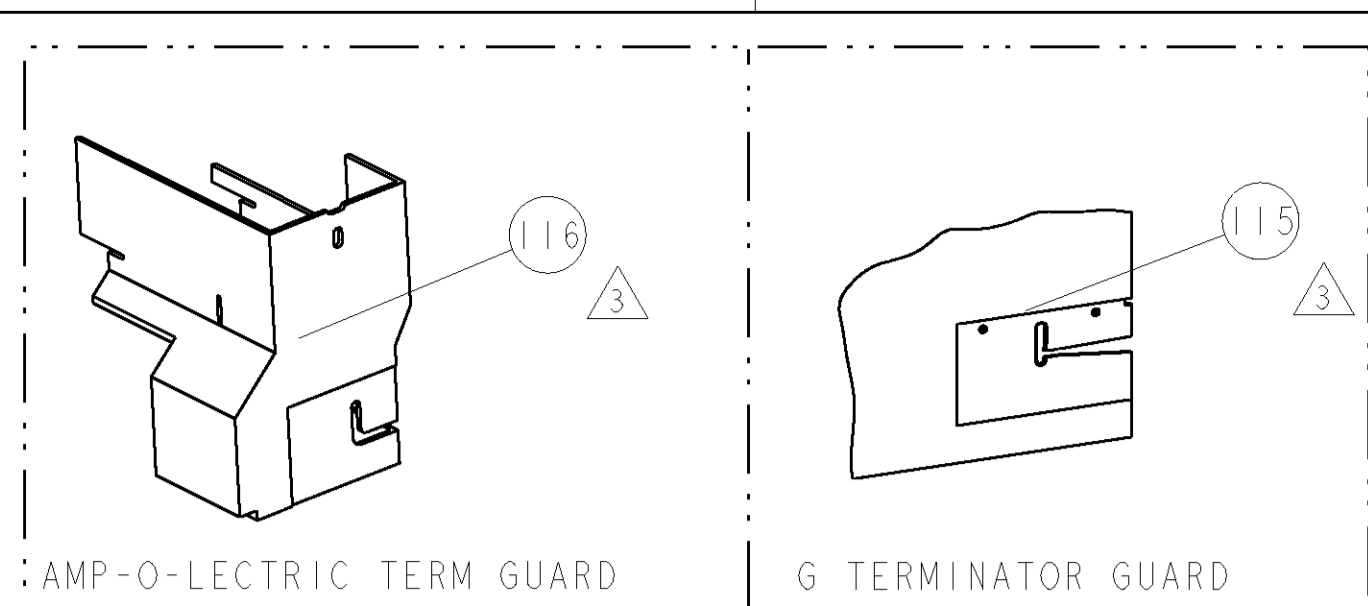


PART NUMBER	REV	FIRST USED	POWER UNIT	FEED TYPE	DESCRIPTION
1852439-1	A	122500-1	LEADMAKER	AIR FEED	CUTS CARRIER
1852439-2	A	565435-5	BENCH MODEL K	AIR FEED	CUTS CARRIER
1852439-3	A	354500-1	BENCH MODEL G	AIR FEED	CUTS CARRIER
1852439-6	A	122500-1	LEADMAKER	AIR FEED	CONTINUOUS CARRIER
7-1852439-7	A	-	-	-	SPARE PARTS

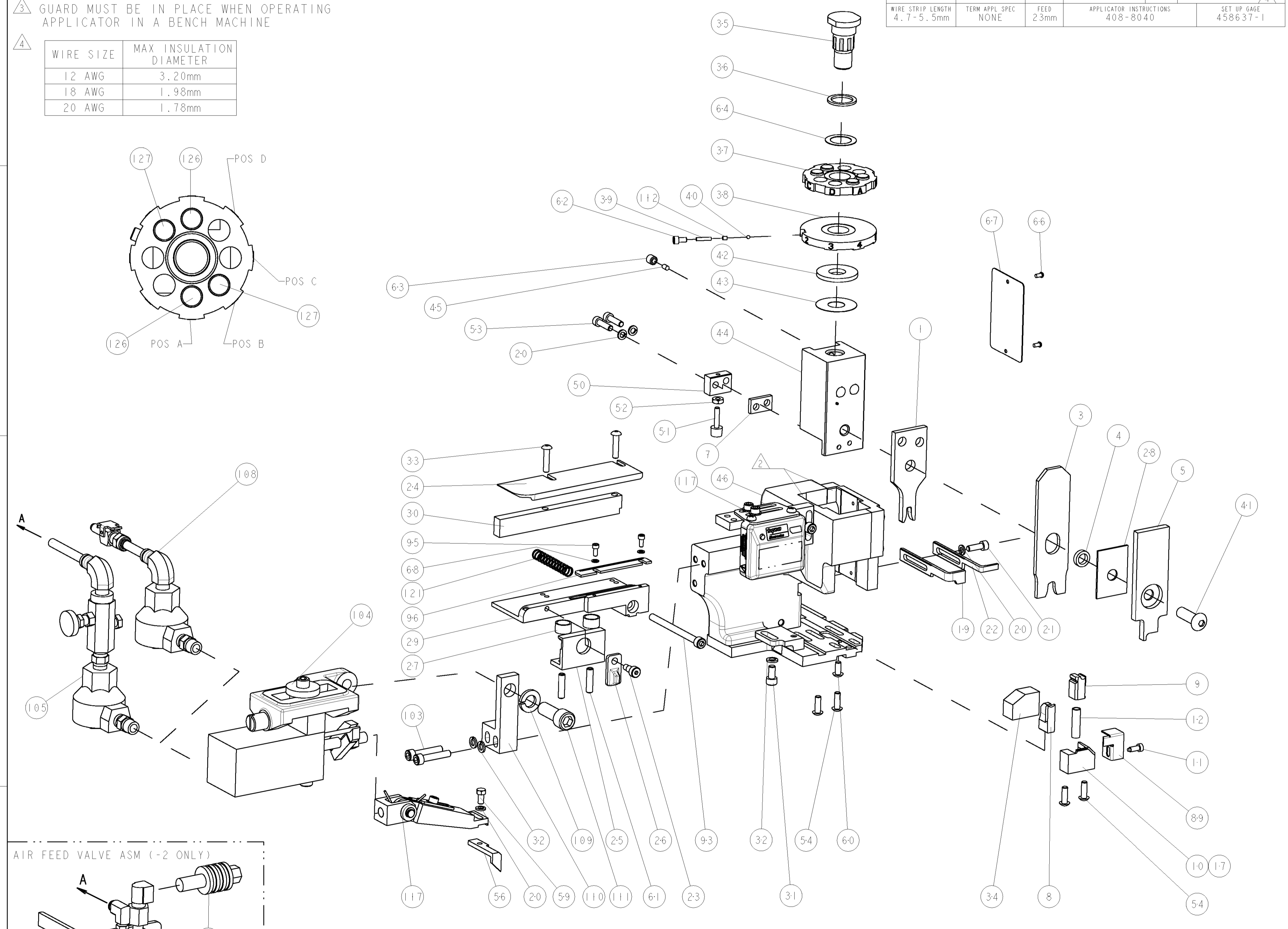
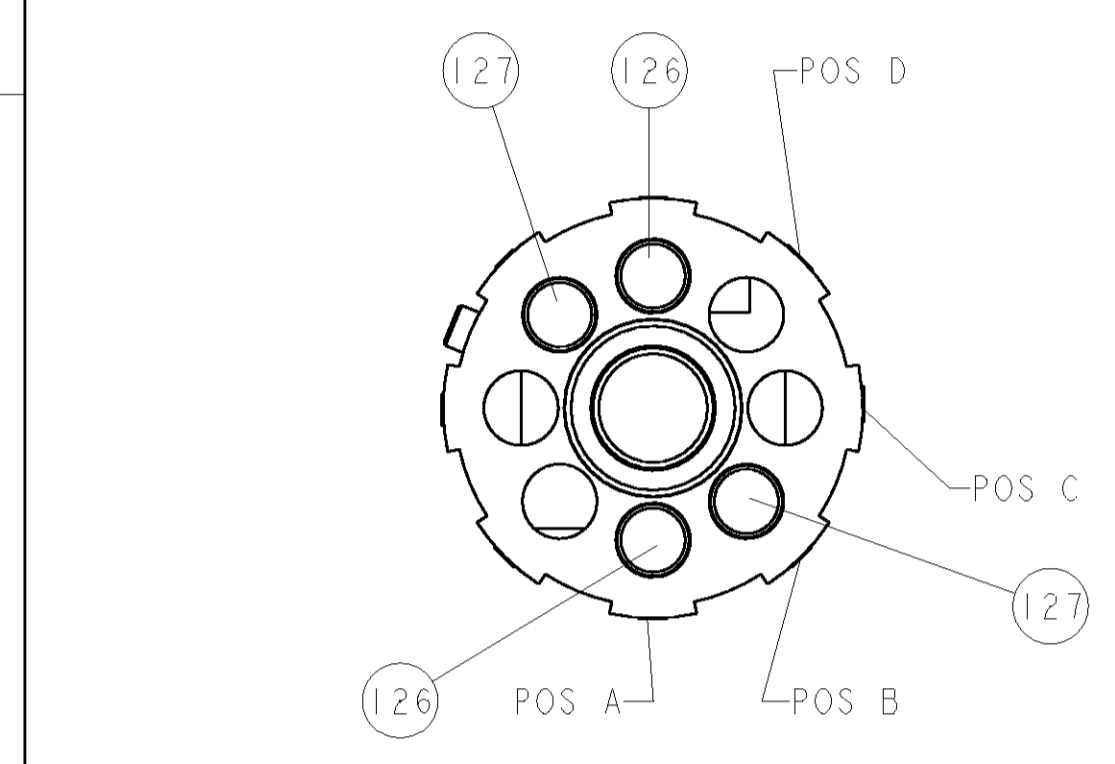
- ▲ RECOMMENDED SPARE PARTS
 ▲ GREASE LIGHTLY
 ▲ GUARD MUST BE IN PLACE WHEN OPERATING APPLICATOR IN A BENCH MACHINE
- | WIRE SIZE | MAX INSULATION DIAMETER |
|-----------|-------------------------|
| 12 AWG | 3.20mm |
| 18 AWG | 1.98mm |
| 20 AWG | 1.78mm |



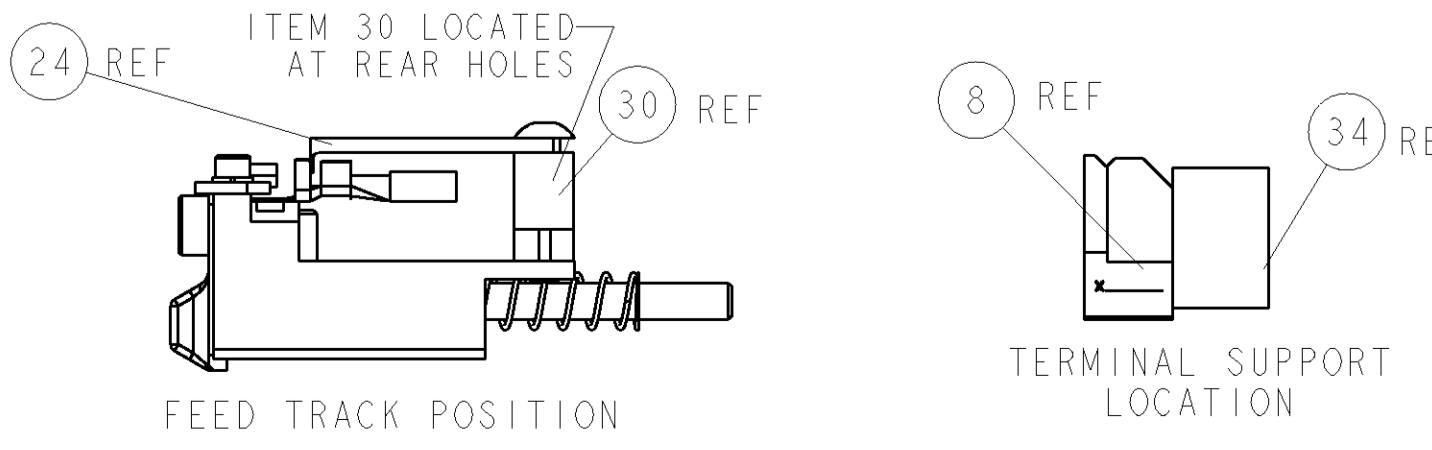
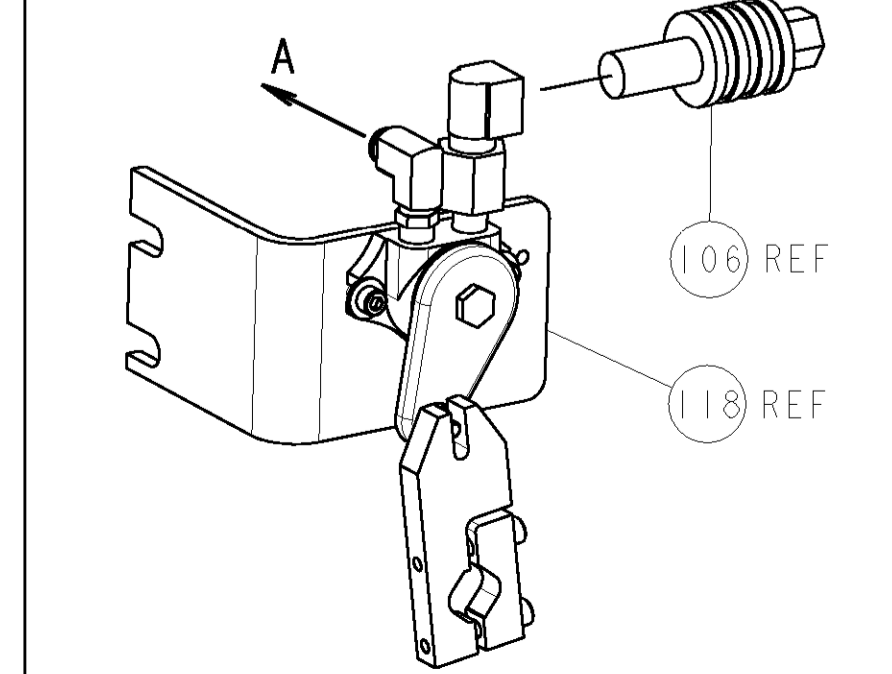
TERMINAL NAME: CHART 250 TERMINAL FEMALE

SOCKET	PIN	AMP TERMINAL	AMP CRIMP SPECS
1438231-2	-		
		PAD LTR	CRIMP HEIGHT
		A	1.80±0.05mm [.071±.002]
		B	1.72±0.05mm [.068±.002]
		C	-
		D	-
		CRIMP	SIZE
		WIRE	3.81mm [.150]
		INSUL	6.35mm [.250]
WIRE STRIP LENGTH	TERM APPL SPEC	FEED	APPLICATOR INSTRUCTIONS
4.7-5.5mm	NONE	2.3mm	408-8040
			SET UP GAGE
			458637-1

LOC	DIST	REV	DESCRIPTION	DATE	BY	APPV
A	66		RELEASED	11APR2007	LG	TE



AIR FEED VALVE ASM (-2 ONLY)



QTY	PART NO	DESCRIPTION	ITEM NO
- 2 2 2 2 -	1-354779-1	PIN, WIRE DISC, .3045	127
- 2 2 2 2 -	354779-4	PIN, WIRE DISC, .3010	126
- 1 1 1 1 -	1-22281-8	SPRING, COMPRESSION	121
- - REF - -	692655-6	AIR FEED VALVE ASSEMBLY	118
- 1 1 1 1 -	461062-1	FEED FINGER ASSEMBLY	117
- - REF - -	455749-1	GUARD WINDOW	116
- - REF - -	679532-1	INSERT, GUARD	115
-77 -6 -3 -2 -1 U/M	PART NO	DESCRIPTION	ITEM NO

QTY	PART NO	DESCRIPTION	ITEM NO
- 1 1 1 1 -	690603-1	SPRING ASSIST AMP-O-MATOR APPLICATOR	112
- 1 1 1 1 -	3-21001-5	SCR, SKT HD CAP 3/8-16 X 1.000	111
- 1 1 1 1 -	459610-3	MOUNT, FEED BRACKET	110
- 1 1 1 1 -	21024-8	WASHER, SPRG LOCK, REG 3/8	109
- 1 1 1 1 -	692655-7	AIR FEED VALVE ASSEMBLY	108
- - REF - -	24024-2	VALVE, SHUT OFF	106
- - - 1 - -	692655-5	AIR FEED VALVE ASSEMBLY	105
- 1 1 1 1 -	461065-1	ASSEMBLY, AIR FEED	104
- 2 2 2 2 -	3-21000-9	SCR, SKT HD CAP 10-32 X 1.000	103
- 1 1 1 1 -	1-690438-0	FRONT STRIP GUIDE	96
- 2 2 2 2 -	1-21000-3	SCR, SKT HD CAP 4-40 X .250	95
- 1 1 1 1 -	8-21000-7	SCR, SKT HD CAP 10-32 X 2.500	93
- 1 1 1 1 -	318563-1	GUARD, FRONT CHIP	89
- 1 1 1 1 -	4088040	SF APPL INST 408-8040	72
- 1 1 1 1 -	217238-1	GENERAL INSTRUCTION PKG	71
- 2 2 2 2 -	21024-2	WASHER, SPRG LOCK, REG NO 4	68
- 1 1 1 1 -	461264-1	PLATE, IDENTIFICATION	67
- 2 2 2 2 -	21017-2	SCREW, DRIVE	66
- 1 1 1 1 -	986950-1	WASHER, FLAT PRECISION	64
- 1 1 1 1 -	21009-2	SCR, SET, SELF LOCKING 1/4-20 X .250	63
- 1 1 1 1 -	23030-1	SCR, SKT HD CAP 6-32 x .25	62
- 2 2 2 2 -	5-21006-6	SCR, SET, CUP POINT 10-32 X .750	61
- 1 1 1 1 -	22733-8	SCR, BHSC, SELF-LOCKING, 8-32 X .375	60
- 1 1 1 1 -	2-22603-0	SCR, HEX HD CAP 8-32 X .312	59
- 1 1 1 1 -	3-694433-7	FEED PAWL	56
- 4 4 4 4 -	2-21002-2	SCR, BTN SKT HD CAP 8-32 X .500	54
- 2 2 2 2 -	2-21000-8	SCR, SKT HD CAP 8-32 X .625	53
- 1 1 1 1 -	21018-5	NUT, HEX, REG 6-32	52
- 1 1 1 1 -	811242-2	BUMPER, HOLD DOWN	51
- 1 1 1 1 -	690753-1	SPACER, TONKER	50
- 1 1 1 1 -	1633399-1	APPL., BASIC AIR FEED SUB ASSY	46
- 1 1 1 1 -	690191-1	PLUG, NYLON	45
- 1 1 1 1 -	455673-1	RAM, SIDE FEED	44
- 1 1 1 1 -	690125-1	SHIM SUB-ASSY	43
- 1 1 1 1 -	690124-1	WASHER, RAM (.115)	42
- 1 1 1 1 -	7-21002-9	SCR, BTN SKT HD CAP 5/16-24 X 1.00	41
- 1 1 1 1 -	23241-6	BALL, STEEL	40
- 1 1 1 1 -	690170-1	SPRING, COMPRESSION	39
- 1 1 1 1 -	690142-1	DISC, INSULATION	38
- 1 1 1 1 -	354777-1	WIRE DISC, ASSEMBLY	37
- 1 1 1 1 -	22480-5	SPRING, COMPRESSION	36
- 1 1 1 1 -	690212-1	POST, RAM	35
- 1 1 1 1 -	3-690786-5	TERMINAL SUPPORT	34
- 2 2 2 2 -	2-21002-4	SCR, BTN SKT HD CAP 8-32 X .750	33
- 3 3 3 3 -	21024-5	WASHER, SPRG LOCK, REG NO 10	32
- 1 1 1 1 -	3-21000-4	SCR, SKT HD CAP 10-32 X .375	31
- 1 1 1 1 -	1320908-3	SPACER, STRIP GUIDE	30
- 1 1 1 1 -	1633087-1	PLATE, STRIP GUIDE	29
- 1 1 1 1 -	1-455888-0	SPACER, CRIMPER	28
- 2 2 2 2 -	1-22284-0	SPRING, COMPRESSION	27
- 1 1 1 1 -	356835-1	LEVER, DRAG RELEASE	26
- 1 1 1 1 -	240792-1	DRAG, TERMINAL	25
- 1 1 1 1 -	1320928-1	PLATE, STRIP GUIDE	24
- 1 1 1 1 -	21989-8	SCR, SKT HD SHLDR 3/16 DIA X .250	23
- 1 - - 1 -	690472-2	STRIPPER	22
- 1 1 1 1 -	2-21000-7	SCR, SKT HD CAP 8-32 X .500	21
- 4 4 4 4 -	21024-4	WASHER, SPRG LOCK, REG NO 8	20
- - 1 1 - -	691353-1	STRIPPER	19
- 1 - - -	679625-1	SHEAR HOLDER, FRONT (NO CUT)	17
- 1 1 1 1 -	3-22280-3	SPRING, COMPRESSION	12
- 1 1 1 1 -	690461-1	STOP, SHEAR	11
- - 1 1 1 -	690459-1	SHEAR HOLDER, FRONT	10
- 1 1 1 1 -	462006-1	FLOATING SHEAR, FRONT	9
- 1 1 1 1 -	1-1633332-0	ANVIL, COMBINATION	8
- 1 1 1 1 -	5-240641-2	SPACER	7
- 1 1 1 1 -	2-455889-0	DEPRESSOR, SHEAR	5
- 1 1 1 1 -	238011-2	BLOCK, CRIMPER SPACER	4
- 1 1 1 1 -	1-854830-7	CRIMPER, INSULATION SPECIAL	3
- 1 1 1 1 -	6-1673600-4	CRIMPER, WIRE	1
-77 -6 -3 -2 -1 U/M	PART NO	DESCRIPTION	ITEM NO