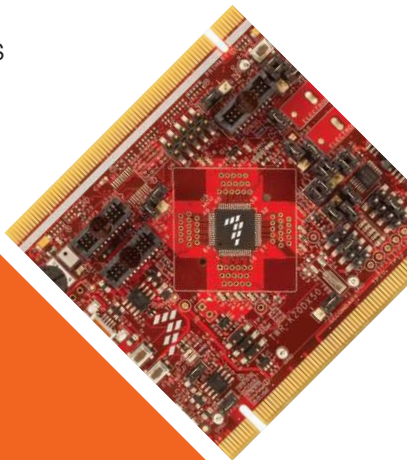




TWR-K20D50M Quick Start Guide

Development Kit for Kinetis
50 MHz K20 Family of MCUs

Tower System
Development Board
Platform



Get to know the TWR-K20D50M

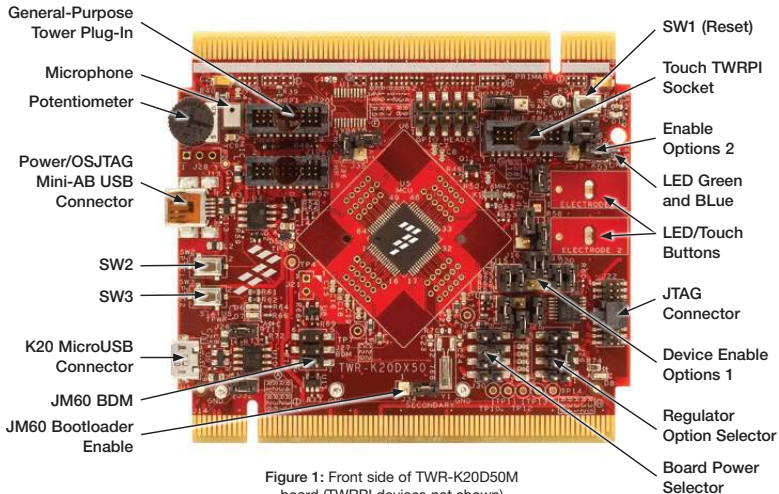




Figure 2: Back side of TWR-K20D50M board

TWR-K20D50M

Freescale Tower System Development Board Platform



The TWR-K20D50M board is designed to work either in standalone mode or as part of the Freescale Tower System, a modular development board platform that enables rapid prototyping and tool re-use through reconfigurable hardware. Take your design to the next level and begin constructing your Tower System evaluation board platform today by visiting freescale.com/Tower for additional Tower System boards and compatible peripherals.



iWRN-RZuD50M

Features

- Tower System development tool-compatible board
- MK20DX128VLH5 MCU (50 MHz, 128KB Flash, 16 KB RAM, 32 KB FlexNVM, low power, 64LQFP package)
- Dual-role USB interface with Micro-AB USB connector
- Touch Tower Plug-in Socket
- General-purpose Tower Plug-in (TWRPI) socket
- Onboard debug circuit (MC9S08JM60 open source JTAG (OSJTAG) with virtual serial port)
- Three-axis accelerometer (MMA8451Q)
- Four (4) user-controllable LEDs
- Two (2) capacitive touchpads
- Two (2) user pushbutton switches
- Infrared transmit and receive
- Potentiometer
- Microphone (ADC)
- Buzzer
- Battery backup for RTC

Tools

- Freescale's CodeWarrior Development Studio for Microcontrollers v10.1 (CW-MCU10)
- IAR EWARM V6.30



step-by-step Installation Instructions

1 Download Software and Tools

Download installation software and documentation under **“Jump Start Your Design”** at freescale.com/TWR-K20D50M.



2 Install Software and Tools

Install the OSBDM/OSJTAG Tower Toolkit to install the OSJTAG and USB-to-Serial drivers.

3 Configure the Hardware

Connect one end of the USB cable to the PC and the other end to the Power/OSJTAG mini-B connector on the TWR-K20D50M module. Allow the PC to automatically configure the USB drivers if needed.

4 Press Switches and Touch Electrodes

A tone will beep when SW2 or SW3 are pushed, touch the pads on E1-E2 and LEDs will turn on.

5 Tilt the Board

Sound can be heard through the board buzzer depending on inclination angle.

6 Clap or Whistle Near the Board Microphone

Your TWR-K20D50M will respond with a tone.

7 Explore Further

Explore Kinetis 50 MHz devices ultra-low power modes and USB communication by conducting the additional Labs located at freescale.com/TWR-K20D50M.



TWR-KZUD50M Jumper Options

The following is a list of all the jumper options. The default installed jumper settings are indicated in the shaded boxes.

Jumper	Jumper Designator	Signal	Jumper Option
V_BRD	J25	V_BRD	DEF: 1-2 VBRD to MCU_PWR
	J23	VDDA_HDR	DEF: 1-2 VDDA to MCU_PWR
VBAT	J35	VBATD Enable VBAT	DEF: 1-2
	J36	VBATD Enable MCU_PWR	DEF: 1-2
PSV_TRG_USB	J24	PSV_TRG_USB	open
JM60 Bootloader	J34	JM60 BOOTLOAD EN	open OSJTAG mode 1-2 JM60 bootloader mode
VREG IN SELECTOR	J30	VREG IN SELECTOR	DEF: 1-2 Regulator powered by OSJTAG USB 5-6 K20 USB power the K20 Regulator 8-6 TWR-USB power up the K20 Regulator
BOARD POWER SELECTION	J29	BOARD POWER SELECTION	DEF: 3-5 P3.3V_REG powers VBRD(MCU_PWR) 7-5 1.8V powers VBRD(MCU_PWR) 1-2 K20 3.3 Reg Output powers VBRD (MCU_PWR)

i-wr-kzuD50M Jumper Options (cont.)

Module	Jumper Designator	Name	Options	K20 pin name
USB	J26	K20 USB ENA	DEF: 1-2	PTC9_EBI_AD6
	J32	K20 USB FLGA	DEF: 1-2	PTC8_EBI_AD7/SSIO_CLK
IRDA	J9	IRDAJ	open	PTD7_CMT_IRO
	J7	CMPO_IN0	open	PTC7_EBI_ADB/CMP0_IN1
Microphone	J16	Microphone Enable	DEF: 1-2	ADC0_DP3
Potentiometer	J15	Potentiometer Enable	DEF: 1-2	ADC0_DM3
Buzzer	J1	Buzzer Enable	DEF: 1-2	PTC4
Accelerometer	J19	SDA Accelerometer Enable	DEF: 1-2	PTB3_I2C0_SDA/ADC0_SE13/TSIO_CH8
	J20	SCL Accelerometer Enable	DEF: 1-2	PTB2_I2C0_SCL/ADC0_SE12/TSIO_CH7
	J18	ACCELEROMETER INT1	DEF: OPEN	PTB0/ADC0_SE8/TSIO_CH0
	J17	ACCELEROMETER INT2	DEF: OPEN	PTB1/ADC0_SE9/TSIO_CH6
GPIO Header	J2	1	SAIO_RX_FS	PTC10_EBI_AD5/SSIO_RX_FS
		2	SAIO_TX_FS	PTB19/SSIO_TX_FS/TSIO_CH12
		3	SAIO_RXD0	PTC5
		4	SAIO_TXD0	PTC1/UART_RTS/FTM0_CH0/TSIO_CH14
		5	SAIO_RXD1	PTC11_LLLWU_SSI0_RXD1
		6	SAIO_TXD1	PTC0/SSIO_TXD/TSIO_CH13
		7	SAIO_RX_BCLK	PTC6
		8	SAIO_TX_BCLK	PTB18/SSIO_TX_BCLK/TSIO_CH11
		9	SAIO_MCLK	PTC8_EBI_AD7/SSIO_CLK
		10	GND	GND
LEDs	J13	LED orange Enable	DEF: 1-2	PTC10
	J11	LED Yellow Enable	DEF: 1-2	PTC9
	J4	LED Green Enable	DEF: 1-2	PTC7
	J6	LED Blue	DEF: 1-2	PTC8
PTA12 - Header	J28	PTA12	1 MCU_PWR 2 PTA12 3 GND	This header can be used to power up an external circuit/sensor
Pushbuttons	SW2	Pushbutton1	PTC1	PTC1/UART_RTS/FTM0_CH0/TSIO_CH14
	SW3	Pushbutton0	PTC2	PTC2/UART_CTS/FTM0_CH1/TSIO_CH15
TSI Electrodes	Elec1	Electrode1	TSIO_CH0	PTB0/ADC0_SE8/TSIO_CH0
	Elec2	Electrode2	TSIO_CH6	PTB1/ADC0_SE9/TSIO_CH6



et Started



Download installation software and documentation under
“**Jump Start Your Design**” at freescale.com/TWR-K20D50M.

Support

Visit freescale.com/support for a list of phone numbers within your region.

Warranty

Visit freescale.com/warranty for complete warranty information.

For more information, visit freescale.com/Tower

Join the online Tower community at towergeeks.org

Freescale, the Freescale logo, CodeWarrior and Kinetis are trademarks of Freescale Semiconductor, Inc., Reg. U.S. Pat. & Tm. Off. Tower is a trademark of Freescale Semiconductor, Inc. All other product or service names are the property of their respective owners. © 2012, 2014 Freescale Semiconductor, Inc.

