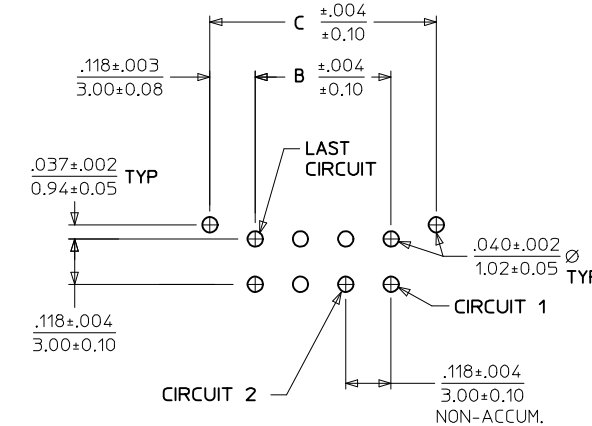
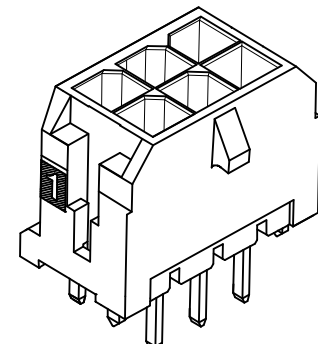


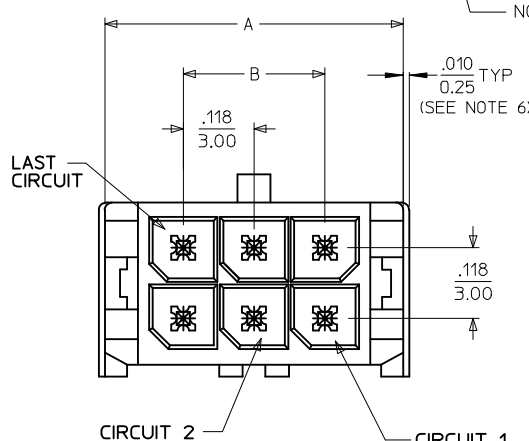
D (SEE NOTE 6)

$\frac{.025}{0.64}$  SQ TYP



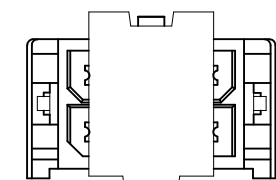
PCB LAYOUT: COMPONENT SIDE  
RECOMMEND PCB THICKNESS: .062/1.57

NOTE : (2) POLARIZATION PEGS ARE SHOWN. HOWEVER, ASSEMBLIES MAY BE MANUFACTURED WITH (1) PEG ONLY.

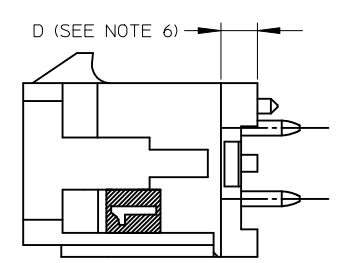


CIRCUIT "\*" IDENTIFIED ON THIS SURFACE (APPROX. LOCATION SHOWN FOR REF.)

CKTS	A	B	C
02	.262 6.65	NA	.236 6.00
04	.380 9.65	.118 3.00	.354 9.00
06	.498 12.65	.236 6.00	.472 12.00
08	.616 15.65	.354 9.00	.591 15.00
10	.734 18.65	.472 12.00	.709 18.00
12	.852 21.65	.591 15.00	.827 21.00
14	.970 24.65	.709 18.00	.945 24.00
16	1.088 27.65	.827 21.00	1.063 27.00
18	1.206 30.65	.945 24.00	1.181 30.00
20	1.325 33.65	1.063 27.00	1.299 33.00
22	1.443 36.65	1.181 30.00	1.417 36.00
24	1.561 39.65	1.299 33.00	1.535 39.00



SHOWN WITH DISPOSABLE CAP  
SEE NOTE 4



NOTES:

- HOUSING MATERIAL: GLASS FILLED LIQUID CRYSTAL POLYMER, UL94V-0, COLOR-BLACK  
TERMINAL MATERIAL: BRASS ALLOY
- FINISH: A = .000060/(0.00152) MIN. REFLOWED MATTE TIN OVER .000050/(0.00127) MIN. NICKEL PLATE. (FINISH IS BRIGHT IN APPEARANCE, THICKNESS AS APPLIED PRIOR TO REFLOW)  
B = .000015/(0.00038) MIN. SELECT GOLD IN CONTACT AREA, .000100/(0.00254) MIN. SELECT MATTE TIN ON SOLDER TAILS, BOTH OVER .000050/(0.00127) MIN. NICKEL PLATE.  
C = .000030/(0.00076) MIN. SELECT GOLD IN CONTACT AREA, .000100/(0.00254) MIN. SELECT MATTE TIN ON SOLDER TAILS, BOTH OVER .000050/(0.00127) MIN. NICKEL PLATE.
- PRODUCT SPECIFICATION: PS-43045
- PACKAGING: TAPE & REEL (WITH DISPOSABLE CAPS) PER PK-70873-09\*\*.
- MATES WITH MICRO FIT (3.0) RECEPTACLE SERIES 43025
- CIRCUIT SIZES 2-6: "D" IS .265/6.74 FOR .010/0.25 STEP.  
CIRCUIT SIZES 8-24: "D" IS .063/1.60 FOR .010/0.25 STEP.
- THIS PART CONFORMS TO CLASS B REQUIREMENTS OF COSMETIC SPECIFICATION PS-45499-002.

CKTS	TOOLED	FINISH		
		A	B	C
02	YES	MATERIAL NO:	43045-0301	MATERIAL NO:
04	YES	MATERIAL NO:	43045-0501	MATERIAL NO:
06	YES	MATERIAL NO:	43045-0701	MATERIAL NO:
08	YES	MATERIAL NO:	43045-0901	MATERIAL NO:
10	YES	MATERIAL NO:	43045-1101	MATERIAL NO:
12	YES	MATERIAL NO:	43045-1301	MATERIAL NO:
14	YES	MATERIAL NO:	43045-1501	MATERIAL NO:
16	YES	MATERIAL NO:	43045-1701	MATERIAL NO:
18	YES	MATERIAL NO:	43045-1901	MATERIAL NO:
20	YES	MATERIAL NO:	43045-2101	MATERIAL NO:
22	NO	MATERIAL NO:	43045-2301	MATERIAL NO:
24	YES	MATERIAL NO:	43045-2501	MATERIAL NO:

UPDATE TOOLED EC NO: UCP2015-4529 DRAWN: JDOX CHKD: SSOUSEK APPR: FSMITH 2015/07/07 2015/07/07 2015/08/13	QUALITY SYMBOLS ∇=0 ∇=0 ∇=0	GENERAL TOLERANCES (UNLESS SPECIFIED) <table border="1"> <thead> <tr> <th></th> <th>mm</th> <th>INCH</th> </tr> </thead> <tbody> <tr> <td>4 PLACES</td> <td>± ---</td> <td>± ---</td> </tr> <tr> <td>3 PLACES</td> <td>± ---</td> <td>± .010</td> </tr> <tr> <td>2 PLACES</td> <td>± 0.25</td> <td>± .014</td> </tr> <tr> <td>1 PLACE</td> <td>± 0.36</td> <td>± ---</td> </tr> <tr> <td>0 PLACE</td> <td>±</td> <td>±</td> </tr> </tbody> </table>		mm	INCH	4 PLACES	± ---	± ---	3 PLACES	± ---	± .010	2 PLACES	± 0.25	± .014	1 PLACE	± 0.36	± ---	0 PLACE	±	±	DIMENSION STYLE <b>IN/MM</b>	SCALE ---	DESIGN UNITS <b>METRIC</b>	THIRD ANGLE PROJECTION
				mm	INCH																			
			4 PLACES	± ---	± ---																			
			3 PLACES	± ---	± .010																			
2 PLACES	± 0.25	± .014																						
1 PLACE	± 0.36	± ---																						
0 PLACE	±	±																						
DRAWN BY: SSOUSEK DATE: 2013/08/08 CHECKED BY: SSOUSEK DATE: 2013/08/22 APPROVED BY: FSMITH DATE: 2013/10/09		MATERIAL NO. <b>SEE CHART</b>		TITLE <b>MICRO FIT (3.0) DUAL ROW VERTICAL THRU HOLE SHORT TAIL HEADER - TAPE</b>		SHEET NO. <b>1 OF 1</b>																		
DRAFT WHERE APPLICABLE MUST REMAIN WITHIN DIMENSIONS		DOCUMENT NO. <b>SD-43045-040</b>		THIS DRAWING CONTAINS INFORMATION THAT IS PROPRIETARY TO MOLEX INCORPORATED AND SHOULD NOT BE USED WITHOUT WRITTEN PERMISSION																				
A4		SIZE C		molex																				