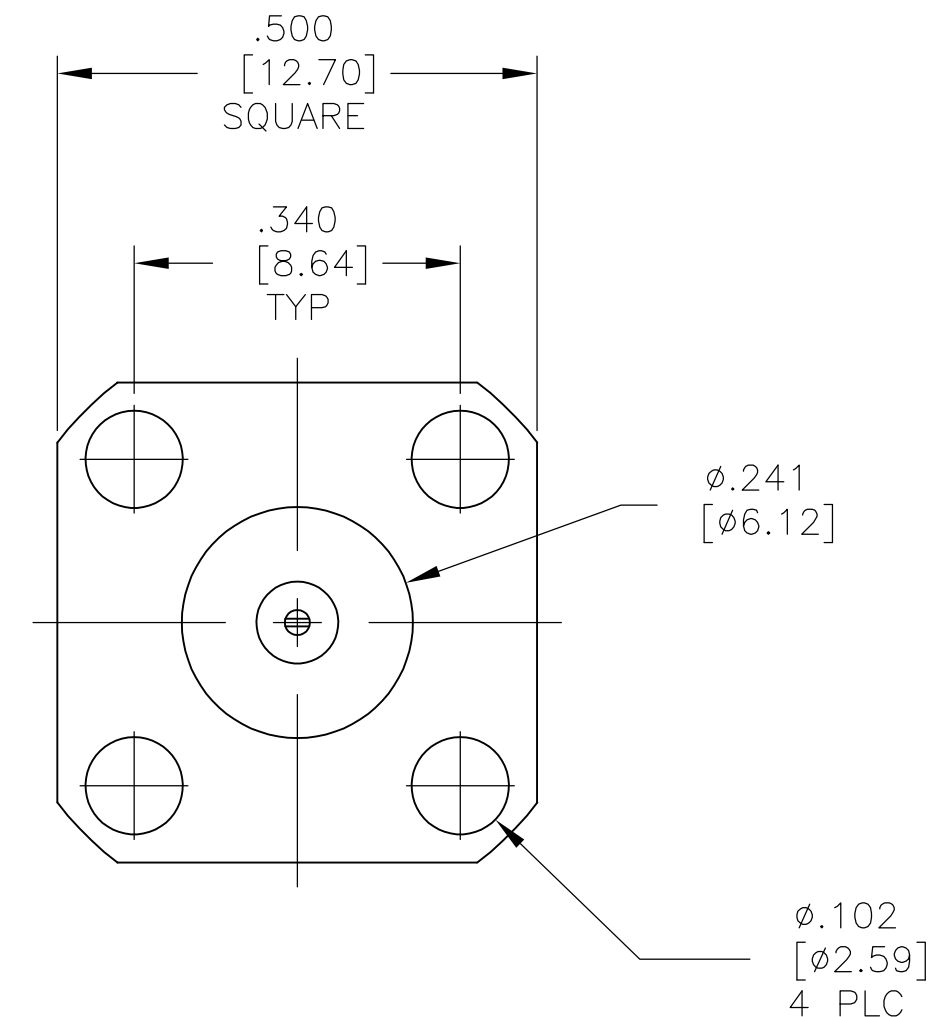
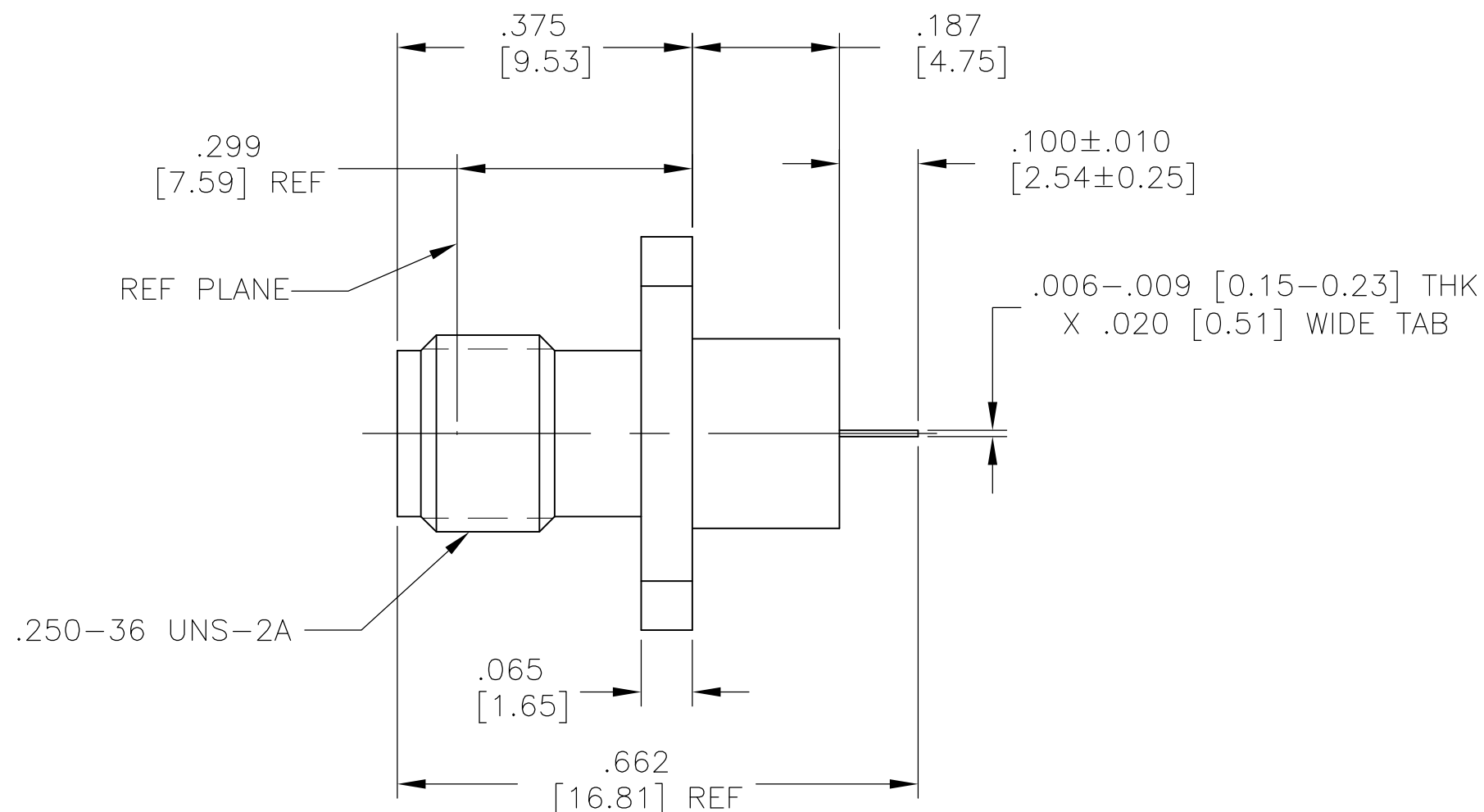


THIS DRAWING IS UNPUBLISHED. RELEASED FOR PUBLICATION
 © COPYRIGHT - By - ALL RIGHTS RESERVED.

| REVISIONS | | | | |
|-----------|-----|-----------------------|----------|-------|
| P | LTR | DESCRIPTION | DATE | APVD |
| B | | REV PER ECO 16-016338 | 12-12-16 | CT DW |

| COMPONENT | MATERIAL | FINISH |
|----------------|--|--|
| HOUSING | STAINLESS STEEL PER ASTM-A484 AND ASTM-A582, TYPE 303 | PASSIVATE PER ASTM-A380 |
| DIELECTRIC | TFE FLUOROCARBON PER ASTM-D-1457 | N/A |
| CENTER CONTACT | BERYLLIUM COPPER PER ASTM B 196, ALLOY C17300, CONDITION H | GOLD PLATE PER ASTM-B-488 OVER NICKEL PLATE PER AMS-QQ-N-290 |



| ELECTRICAL | MECHANICAL | ENVIRONMENTAL |
|--|--|---|
| Nominal Impedance (Ohms) 50 | Interface Dimensions MIL-STD-348A, Fig. 310.2 | TEMPERATURE RATING -55°C TO +105°C |
| Frequency Range (GHz) DC to 18 | Recommended Mating Torque N/A | Vibration MIL-STD-202, Method 204, Condition D. |
| Volt Rating (VRMS MAX) @ Sea Level 190 | Mating Characteristics: | Shock MIL-STD-202, Method 213, Condition I. |
| VSWR 1.05 ± .005 F (GHZ) | Insertion (MAX Lbs) 3.0 | Thermal Shock MIL-STD-202, Method 107, Condition A |
| Insertion Loss (dB MAX) .03 f(GHz) | Withdrawal (MIN Oz) 1.0 | Moisture Resistance MIL-STD-202, Method 106 |
| RF Leakage (dB MIN) -[60 - f(GHz)] | Force to Engage and Disengage (In-Lbs MAX) 2.0 | Corrosion - MIL-STD-202, Method 101, Condition B, 5% salt spray |
| Corona, 70,000 Ft (VRMS MIN) 250 | Center Contact Captivation Axial (Lbs) 6.0 | |
| Dielectric Withstanding Voltage (VRMS MIN) @ Sea Level 1,000 | Radial (In-Oz) 4.0 | |
| Contact Resistance (Milliohms MAX) Center Contact 2.0 | Cable Retention Axial Force (Lbs) N/A | |
| Outer Contact 2.0 | Torque (In-Oz) N/A | |
| Cable to Housing N/A | Weight (Grams) N/A | |
| RF High Potential @ Sea Level (VRMS MIN @ 5 MHz) 670 | | |
| I.R.(Megohms MIN) 10,000 | | |

2101675-1
PART NUMBER

| | | | | |
|--|--|--------------------------|---|--|
| THIS DRAWING IS A CONTROLLED DOCUMENT. | | DWN C.C.THOMAS 16AUG2011 | | |
| DIMENSIONS: INCHES | | CHK D.WILSON 8-16-11 | | |
| TOLERANCES UNLESS OTHERWISE SPECIFIED: | | APVD D.WILSON 8-16-11 | NAME SMA FLANGE MOUNT JACK RECEPTACLE, TAB TERMINAL | |
| 0 PLC ± - | | PRODUCT SPEC | SIZE CAGE CODE DRAWING NO RESTRICTED TO | |
| 1 PLC ± - | | APPLICATION SPEC | A2 00779 C=2101675 | |
| 2 PLC ± - | | WEIGHT 0.000000 | SCALE 10:1 SHEET 1 of 1 REV B | |
| 3 PLC ± .005 [0.13] | | CUSTOMER DRAWING | | |
| 4 PLC ± - | | | | |
| ANGLES ± 1° | | | | |
| FINISH | | | | |