

6

5

4

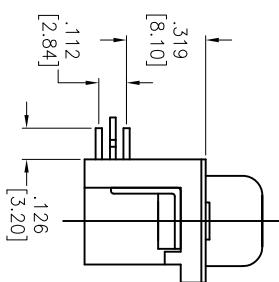
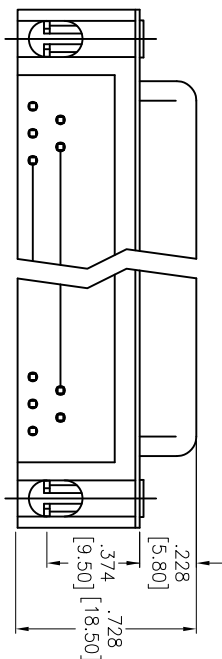
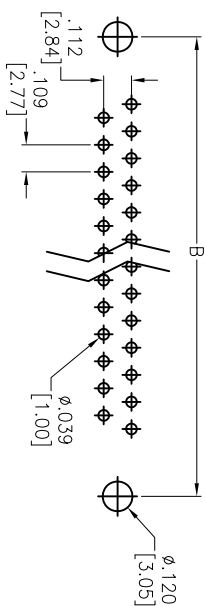
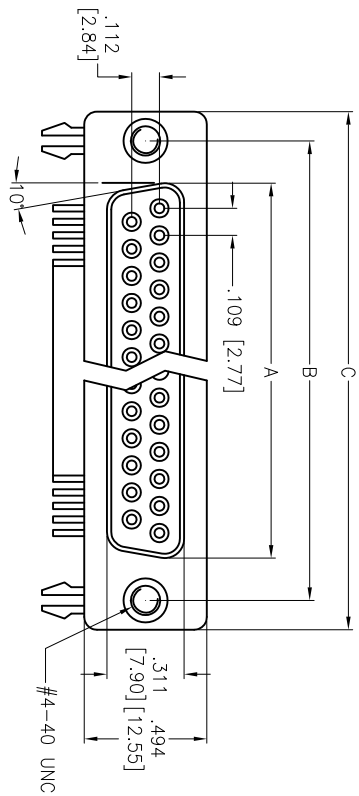
3

2

1

APPROVED: \_\_\_\_\_  
 DATE: \_\_\_\_\_ TITLE: \_\_\_\_\_

Rev	AWO #	Description	Date	Appr
-		RELEASED	10/19/04	
A		REDRAWN	7/20/10	
B		REVISED DIM.	07/05/12	
C		REVISED SPEC.	3/22/13	



**SPECIFICATIONS:**

Material: Insulator: PBT, glass reinforced, rated UL 94V-0  
 Insulator color: Black  
 Contacts: Copper Alloy  
 Shell: Steel, Tin plated  
 Clinch Nut: Copper Alloy, Nickel plated  
 Boardlock: Brass, Tin plated  
 Plating: Gold over Nickel underplate on contact area  
 Electrical: Operating voltage: 250 VAC max  
 Current rating: 3 Amps max  
 Contact resistance: 20 mohms max  
 Insulation resistance: 1,000 Mohms min  
 Dielectric withstanding voltage: 1,000 VAC for 1 minute  
 Temperature Rating: Operating temperature: -20°C to +85°C  
 Environmental: Lead free, RoHS compliant

DXXX	NO. OF CONTACTS	DIMENSIONS		
		A	B	C
DE09	9	.643 [16.33]	.984 [24.99]	1.213 [30.81]
DA15	15	.972 [24.70]	1.311 [33.30]	1.543 [39.20]
DB25	25	1.512 [38.40]	1.852 [47.04]	2.089 [53.05]
DC37	37	2.157 [54.80]	2.500 [63.50]	2.732 [69.40]

**ADAM TECH**

909 Rahway Avenue, Union, NJ 07083  
 Phone: 908-687-5000 Fax: 908-687-5710

TITLE: D-SUB SOCKET, .318" FOOTPRINT, FORKED BOARD LOCKS, #4-40 FLUSH THREADED INSERTS  
 SIZE: X  
 PART NO.: DXXX-SL-24  
 SCALE: NTS  
 SHEET 1 OF 1

A

B

C

D

A

B

C

D

6

5

4

3

2

1

