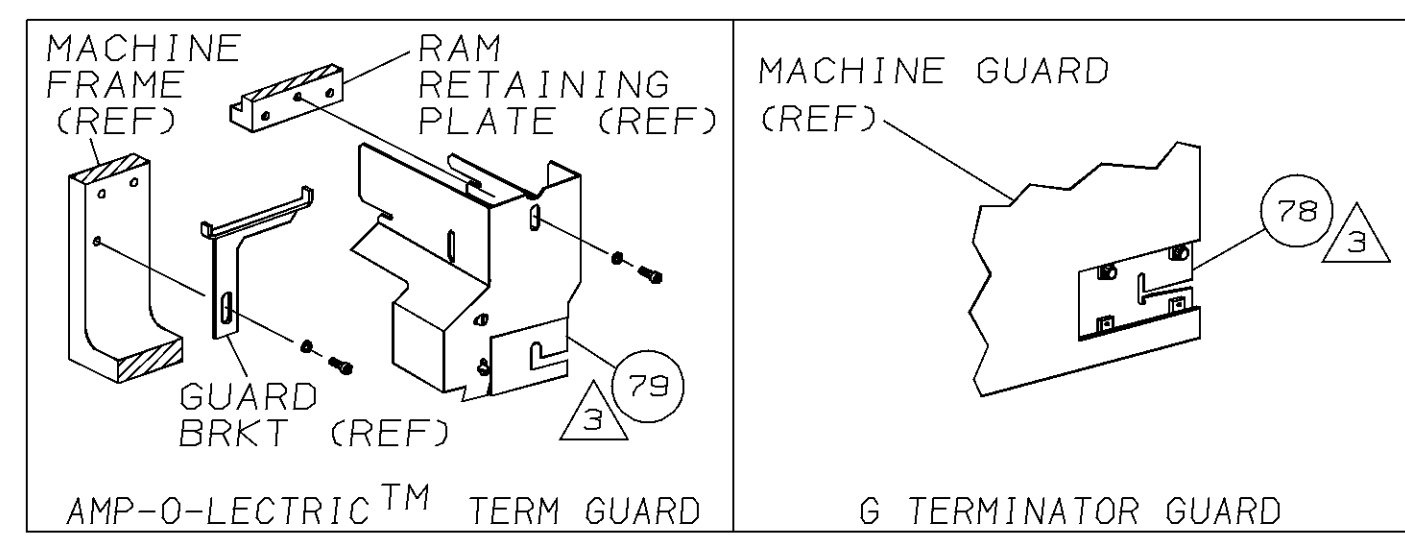
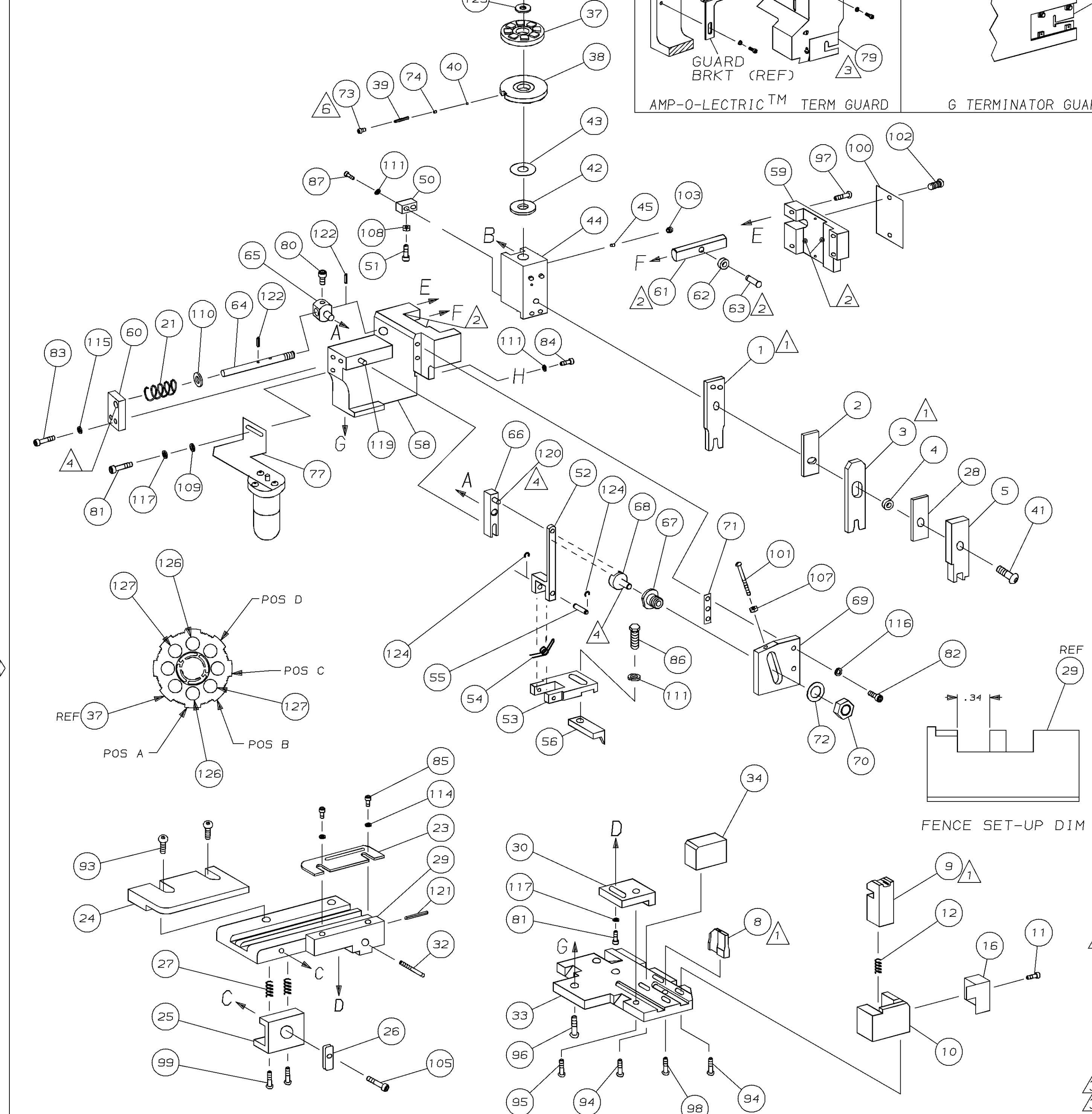


PART NUMBER	REV	FIRST USED
680127-1	A	854400-1
680127-2	A	565435-5
680127-3	A	354500-1



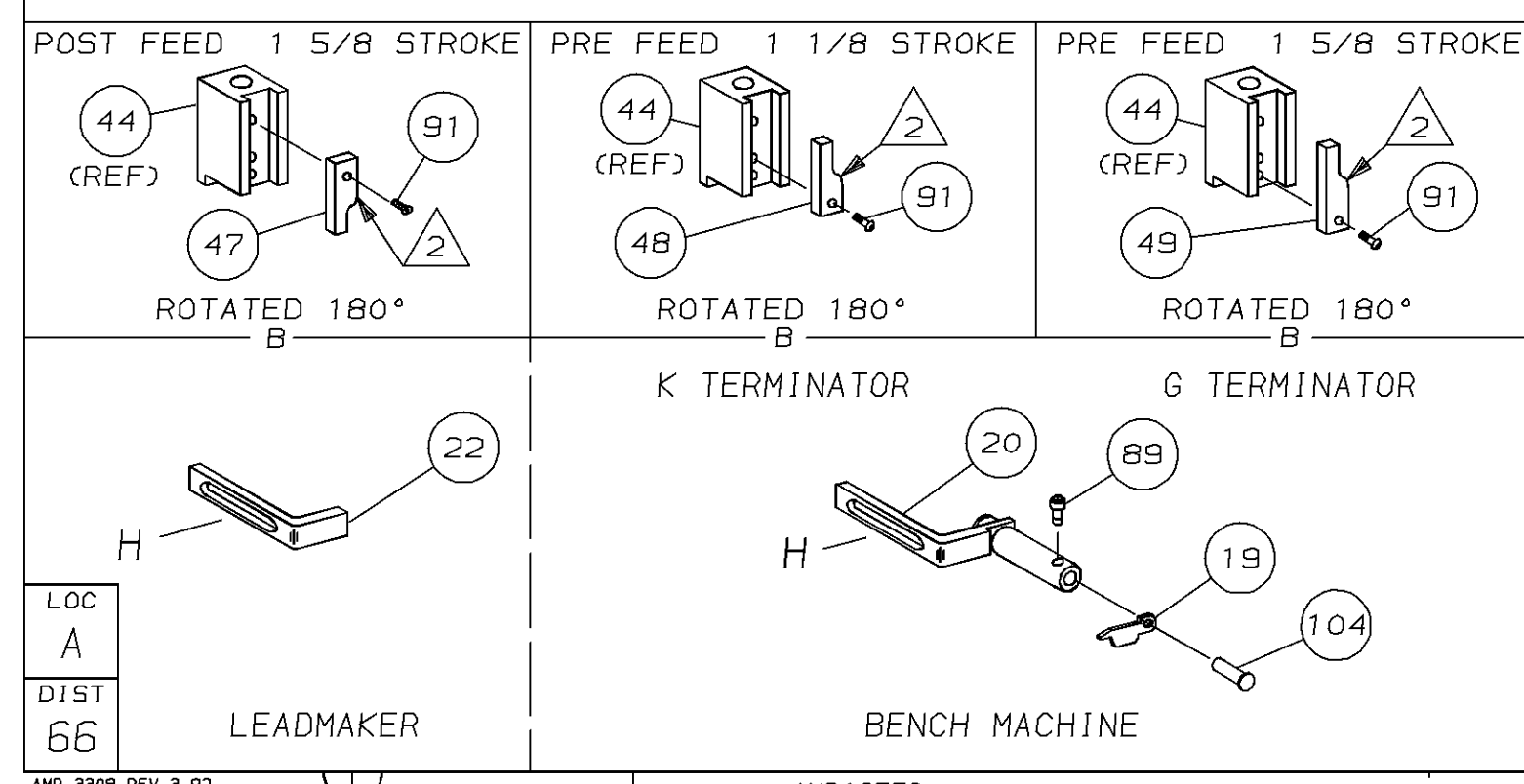
TERMINAL NAME; SIZE HD22		AMPLIMITE CONTACT		CRIMPING DATA			
		787276		PAD LTR	CRIMP HEIGHT	WIRE SIZE	
				A	.024 ±.002	28	
				B	.022 ±.002	30-32	
				C	NOT	USED	
				D	NOT	USED	
				CRIMP	SIZE	TYPE	RANGE
				WIRE	.033	F	32-28
				INSUL	.048	0	.030-.040
				FEED	APPL INST	SET UP GAGE LAYOUT	
				.217	408-8040	458637-1 L1606	
TERM APPL SPEC 114-10001				WIRE STRIP LENGTH -			

-1 LEADMAKER				MECH POST FEED			
-2 BENCH MODEL K				MECH PRE FEED			
-3 BENCH MODEL G				MECH PRE FEED			
REF	REF	REF	-	B	22594-8	NUT, HEX (1/2-20)	
REF	REF	REF	-	B	240628-1	PLATE, ADJUSTMENT	
REF	REF	REF	-	B	240626-1	SHAFT, PIVOT	
REF	REF	REF	-	B	240633-1	BUSHING	
REF	REF	REF	-	A	455680-1	LEVER, INTERMEDIATE	
REF	REF	REF	-	B	240629-1	BLOCK, PIVOT	
REF	REF	REF	-	A	240632-2	SCREW, ADJ FEED ROD	
REF	REF	REF	-	B	240659-3	PIN, CAM ROLLER	
REF	REF	REF	-	B	240658-1	ROLLER, CAM	
REF	REF	REF	-	B	454398-2	ROD, FEED	
REF	REF	REF	-	A	454178-1	GUIDE, FEED ROD	
REF	REF	REF	-	C	454220-1	CAP, RAM	
REF	REF	REF	-	D	454485-1	HOUSING	



2	2	2	-	C	8-354779-2	PIN, WIRE DISC (.3400)B	129	
2	2	2	-	C	7-354779-8	PIN, WIRE DISC (.3380)A	128	
1	1	1	-	A	986950-1	WASHER, FLAT PRECISION	127	
REF	REF	REF	-	A	21045-3	RING, RET "C" (φ.187) FD FING PIN	126	
REF	REF	REF	-	A	5-21028-1	PIN, SLT SPR (φ.125x.50) ADJ ROD	125	
1	1	1	-	A	4-21028-0	PIN, SLT SPR (φ.093x.75) ST GDE PL	124	
REF	REF	REF	-	A	1-21030-1	PIN, DOWEL (φ.187x.50) LEVER	123	
REF	REF	REF	-	A	1-21030-6	PIN, DOWEL (φ.187x1.25) HOUSING	122	
1	2	1	-	A	21024-5	WASHER, LOCK (#10) ADJ BLOCK	121	
REF	REF	REF	-	A	21024-5	WASHER, LOCK (#10) ADJ PLATE	120	
REF	REF	REF	-	A	21024-5	WASHER, LOCK (#10) FEED GDE ROD	119	
2	2	2	-	A	21024-2	WASHER, LOCK (#4) FRONT STP GUIDE	118	
4	4	4	-	A	21024-4	WASHER, LOCK (#8) STRIPPER	117	
REF	REF	REF	-	A	21899-4	WASHER, FLAT (φ5/16) SCREW ADJ	116	
-	1	-	-	A	21899-2	WASHER, FLAT (NO. 10) LUB ASSY	115	
1	1	1	-	A	21018-5	NUT, HEX (NO. 6) HOLDDOWN	114	
REF	REF	REF	-	A	21018-5	NUT, HEX (6-32) FEED ADJ	113	
1	1	1	-	A	22353-8	SCR, SHLD (φ.187x.25) DRAG LEVER	112	
1	1	-	-	A	992031-1	PIN, CLEVIS	111	
1	1	1	-	A	21009-2	SCR, SKT SET (1/4-20x.25 LW) RAM	110	
2	2	2	-	A	21017-2	SCR, DRIVE (#2x.19) ID PLATE	109	
REF	REF	REF	-	A	6-23715-5	SCR, PAN HD (6-32x1.50) FEED ADJ	108	
1	1	1	-	B	461264-1	PLATE, IDENTIFICATION	107	
2	2	2	-	A	3-21002-0	SCR, BHC (10-32x.88) DRAG	106	
1	1	1	-	A	22733-8	SCR, BHC (8-32x.38 LW) ANVIL	105	
REF	REF	REF	-	A	2-21002-9	SCR, BHC (10-32x.75) CAP	104	
REF	REF	REF	-	A	2-22733-8	SCR, BHC (1/4-20x.62) HOUSING	103	
REF	REF	REF	-	A	2-21002-7	SCR, BHC (10-32x.50) SG ADJ BLOCK	102	
4	4	4	-	A	2-21002-2	SCR, BHC (8-32x.50) SHEAR	101	
2	2	2	-	A	2-21002-1	SCR, BHC (8-32x.38) R STRIP GUIDE	100	
1	1	1	-	A	1-21002-7	SCR, BHC (6-32x.38) CAM	99	
1	1	-	-	A	7-21000-9	SCR, SHC (4-40x.19) STRIPPER	98	
2	2	2	-	A	2-21000-7	SCR, SHC (8-32x.48) HOLDDOWN	97	
1	1	1	-	A	2-22603-0	SCR, HEX HD (8-32x.31) FEED FINGER	96	
2	2	2	-	A	1-21000-3	SCR, SHC (4-40x.25) F ST GUIDE	95	
1	1	1	-	A	2-21000-7	SCR, SHC (8-32x.50) STRIPPER	94	
REF	REF	REF	-	A	3-21000-7	SCR, SHC (10-32x.75) FEED ROD GD	93	
REF	REF	REF	-	A	3-21000-6	SCR, SHC (10-32x.62) FD ADJ BLK	92	
1	2	1	-	A	3-21000-4	SCR, SHC (10-32x.38) SG ADJ BL	91	
REF	REF	REF	-	A	3-21000-4	SCR, SHC (10-32x.38) PIVOT BLK	90	
-	REF	-	-	B	455749-1	GUARD, WINDOW	89	
REF	-	-	-	B	679532-1	INSERT, GUARD	88	
-	1	-	-	C	1-465184-0	LUBRICATOR ASSY	87	
1	1	1	-	A	690603-1	SPRING, ASSIST	86	
1	1	1	-	A	23030-1	SCR, SHC (6-32x.25 SL) INS DISC	85	
REF	REF	REF	-	A	458109-1	WASHER, SPECIAL	84	
REF	REF	REF	-	A	690517-1	SPACER	83	
-3	-2	-1	U/M	DWG SIZE	PART NO	DESCRIPTION	ITEM NO	
QTY REQD PER ASSY				REVISION OF EACH ASSY NO (WHEN BLANK, USE DWG REVISION)				
				PARTS LIST				

1	1	1	-	B	690542-2	PAWL, FEED	56	
REF	REF	REF	-	B	240624-1	PIN, FEED FINGER	55	
REF	REF	REF	-	B	691499-1	SPRING, FEED FINGER	54	
REF	REF	REF	-	B	690541-1	HOLDER, FEED FINGER	53	
REF	REF	REF	-	A	455679-1	LEVER, TERMINAL FEED ARM	52	
1	1	1	-	A	811242-2	BUMPER, HOLDDOWN	51	
1	1	1	-	A	690753-1	SPACER, TONKER	50	
1	-	-	-	B	690602-6	CAM, PRE-FEED 1 5/8 ST	49	
-	1	-	-	B	690602-5	CAM, PRE-FEED 1 1/8 ST	48	
-	-	1	-	B	690501-4	CAM, POST-FEED 1 5/8 ST	47	
1	1	1	-	B	459456-1	APPLICATOR, BASIC (SUBASSY)	46	
1	1	1	-	A	690191-1	PLUG, NYLON	45	
1	1	1	-	C	455673-1	RAM	44	
1	1	1	-	A	690125-1	WASHER, LAMINATED	43	
1	1	1	-	A	690124-1	WASHER, RAM	42	
1	1	1	-	A	7-21002-9	BOLT, CRIMPER (5/16x1.00)	41	
1	1	1	-	A	23241-6	BALL, STEEL	40	
1	1	1	-	A	690170-1	SPRING, COMPRESSION	39	
1	1	1	-	C	690142-1	DISC, INSULATION	38	
1	1	1	-	D	354777-1	WIRE DISC, PLASTIC	37	
1	1	1	-	A	22480-5	WASHER, SPRING	36	
1	1	1	-	B	690212-1	POST, RAM	35	
1	1	1	-	B	692776-2	SUPPORT, TERMINAL	34	
REF	REF	REF	-	D	455675-1	PLATE, BASE	33	
1	1	1	-	A	690432-3	SCREW, ADJUSTMENT	32	
REF	REF	REF	-	B	455689-1	BLOCK, STRIP GUIDE ADJ	31	
1	1	1	-	C	843869-1	PLATE, STRIP GUIDE	30	
1	1	1	-	C	1-455888-4	SPACER, FRONT SHEAR DEP	29	
2	2	2	-	A	1-22284-0	SPRING, DRAG	28	
1	1	1	-	B	240793-1	LEVER, DRAG RELEASE	27	
1	1	1	-	B	240792-1	DRAG, TERMINAL	26	
1	1	1	-	D	90765-9	GUIDE, STRIP (REAR)	25	
1	1	1	-	A	690438-1	GUIDE, STRIP (FRONT)	24	
-	-	1	-	B	690472-8	STRIPPER	23	
REF	REF	REF	-	A	4-22284-9	SPRING, FEED RETURN	22	
1	1	-	-	A	679218-1	STRIPPER WIRE STOP ASSY	21	
1	1	-	-	B	458949-2	STRIPPER	20	
1	1	1	-	B	691667-1	GUARD, CHIP (FRONT)	19	
1	1	1	-	C	2-455889-0	DEPRESSOR, SHEAR (FRONT)	18	
1	1	1	-	B	2-238011-0	SPACER, BLOCK CRIMPER	17	
1	1	1	-	C	7-683454-6	CRIMPER, INSULATION	16	
1	1	1	-	C	455888-3	SPACER, CRIMPER	15	
1	1	1	-	C	456400-9	CRIMPER, WIRE	14	
1	1	1	-	A	5-22280-0	SPRING, SHEAR	13	
1	1	1	-	B	690461-1	STOP, SHEAR	12	
1	1	1	-	C	690459-1	HOLDER, SHEAR (FRONT)	11	
1	1	1	-	C	462006-1	SHEAR, FLOAT (FRONT)	10	
1	1	1	-	C	805887-9	ANVIL	9	
1	1	1	-	C	2-455889-0	DEPRESSOR, SHEAR (FRONT)	8	
1	1	1	-	B	2-238011-0	SPACER, BLOCK CRIMPER	7	
1	1	1	-	C	7-683454-6	CRIMPER, INSULATION	6	
1	1	1	-	C	455888-3	SPACER, CRIMPER	5	
1	1	1	-	C	456400-9	CRIMPER, WIRE	4	
-3	-2	-1	U/M	DWG SIZE	PART NO	DESCRIPTION	ITEM NO	
QTY REQD PER ASSY				REVISION OF EACH ASSY NO (WHEN BLANK, USE DWG REVISION)				
				PARTS LIST				



- 1 RECOMMENDED SPARE PARTS.
- 2 GREASE LIGHTLY.
- 3 GUARD MUST BE IN PLACE WHEN OPERATING APPLICATOR IN A BENCH MACHINE.
- 4 LUBRICATE DAILY USING NO. 20 MACHINE OIL.
- 5. ITEMS WITH QTY OF REF SPECIFIED (EXCEPT ITEMS 78 AND 79) ARE USED ON ITEM 46.
- 6 CUT TO LENGTH AT ASSY.

LOC A
DIST 66

DIMENSIONS IN INCHES. DO NOT SCALE PRINT. TOLERANCES UNLESS OTHERWISE SPECIFIED.

DR	9/2/94	APP	9-2-94
M. O'BRINE		T. ELBIN	
CHK	9-2-94	REL	11/29/94
C. ERISMAN		B. MORGAN	

NAME: SIDE FEED HDM APPLICATOR MACHINE REF MINI APPL
SCALE: D DWG NO: 680127 SHEET 1 OF 1 REV A

THIS DRAWING IS A CONTROLLED DOCUMENT FOR AMP INCORPORATED. IT IS SUBJECT TO CHANGE AND THE CONTROLLING ENGINEERING ORGANIZATION SHOULD BE CONTACTED FOR THE LATEST REVISION.

THIS INFORMATION IS CONFIDENTIAL AND IS DISCLOSED TO YOU ON CONDITION THAT NO FURTHER DISCLOSURE IS MADE BY YOU TO OTHER THAN AMP PERSONNEL WITHOUT WRITTEN AUTHORIZATION FROM AMP INCORPORATED, HARRISBURG, PA.

680127