



## IR Grid 2 click

PID: MIKROE-3194

Weight: 26 g

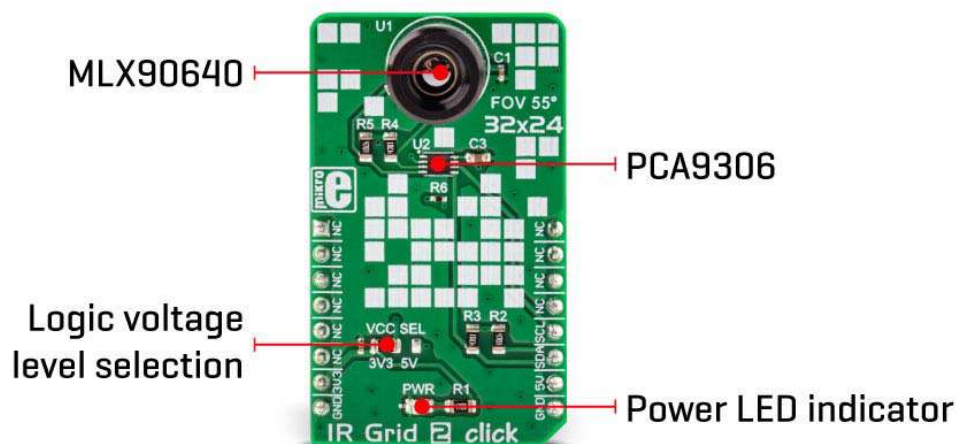
IR Grid 2 click is a thermal imaging sensor. It has an array of 768 very sensitive factory calibrated IR elements (pixels), arranged in 32 rows of 24 pixels. Each one of them is measuring an object temperature up to 300° C within its local Field of View (FOV). The MLX90640 IR sensor used on this Click board™ has just four pins, and it is mounted inside of the industry standard TO39 package. It is equipped with 2Kbit of EEPROM for storing the compensation and calibration parameters. The MLX90640 IR sensor array IC has I2C compatible digital interface, allowing it to be interfaced with a wide range of different MCUs. The sensor used on this Click board™ offers a summed field of view of 55° . The sensor can output up to 64 frames per second (FPS).

Due to the small number of external components it requires, as well as the low pin count and widely used I2C digital interface, this sensor is an ideal solution for building a range of thermal detection applications. IR Grid 2 click can be used for a wide range of applications, including thermal scanners, precise contactless thermal measurement, thermal leaks in homes, industrial

temperature control of moving parts, other types of heated object localization, human presence, and similar applications that require accurate contactless thermal measurement, or thermal imaging.

## How does it work?

IR Grid 2 click is equipped with the MLX90640, a 32x24 IR array sensor, from Melexis. This sensor contains 8 Kbit EEPROM, used to store all the compensation and calibration parameters, along with some editable user parameters, such as the config registers, I2C address and similar. These sensors can measure temperature relative to the cold junction temperature, and for this reason the MLX90640 IR sensor incorporates a PTAT (Proportional to Absolute Temperature) compensation sensor. The device also contains the power supply voltage measurement feature, allowing power supply monitoring. It is recommended that the supply voltage stay as accurate as possible, which is taken care of if used with the MikroElektronika development systems. The IR sensor array as well as the PTAT sensor readings are sampled by the internal Analog to Digital Converter (ADC) and stored to RAM, which can be accessed via the I2C interface. The resolution of the ADC can be programmed between 16 bits and 19bits.



The MLX90640 IR sensor used on this Click board™ has a Field of View (FOV) of 55° , with the IR sensing elements arranged in a 32x28 grid. Each sensor measures the temperature in its individual FOV, allowing the host MCU to build a thermal image or calculate the temperature at each spot of the viewed scene. The measurement results are stored to RAM. The entire RAM area is divided in two pages, with access patterns controlled by the configuration registers (chess pattern, or interleaved pattern). The

compensation parameters stored in the EEPROM are factory calibrated for chess pattern access, yielding the most accurate results when using this mode. The chess pattern mode is selected by default.

The configuration and control registers allow to set the operational parameters of the IR grid sensor. These registers contain bits that control the behavior of the sensor IC: the refresh rate, the ADC resolution, measurement mode (continuous or step mode), sleep mode, I2C mode (FM or FM+), etc. On restart, the data from the corresponding copies of these register locations in EEPROM is mirrored to the operational register locations in RAM, preparing the device to be instantly operated. This allows changing of the default values, since they are actually stored in EEPROM, rather than being hard-coded into the device.

Besides the default working parameters, the EEPROM area contains all the compensation parameters for each IR element, necessary for completing the accurate thermal calculations. Those calculations include ambient temperature calculation, pixel offset calculation, pixel to pixel sensitivity difference compensation, object emissivity compensation, and object temperature calculation. The datasheet of the MLX90640 IR sensor contains equations which use these parameters stored in EEPROM. However, this Click board™ is supplied with the library, which contains functions that simplify working with this sensor, saving time.

Two modes of operation are available: the device can continuously sample data from the IR elements, with the programmed refresh rate (up to 64 frames per second), or it can take one frame, by sampling the selected page. The status byte contains flags that indicate that the reading of a specific page is done.

It should be noted that the sensor measures the IR emissivity of an object, so it is to be expected that some materials cannot be accurately measured by this sensor due to their low emissivity, such as the aluminum. To better understand the emissivity property of the materials, a person wearing clothes, can be taken as an example: the measured temperature will reflect the clothes temperature, rather than the body temperature itself, which is known to be about 37 °C Care should be taken not to expose the Click board™ to a cold or hot air flow, as it will cause false readings of the real temperature. This sensor requires the temperature across the sensor package to be constant.

The MLX90640 IR sensor uses 3.3V for optimal results. While the power for the IR sensor itself is taken from the 3.3V mikroBUS™ rail, in order to support MCUs which use 5V compatible logic levels, the Click board™ comes equipped with PCA9306, a bi-directional I2C level translator IC, produced by

Texas Instruments. This allows the logic voltage level to be selected by the SMD jumper labeled as VCC SEL. Besides I2C bus lines, no additional lines of the mikroBUS™ are used. I2C bus lines are routed to the respective pins of the mikroBUS™.


## Specifications

Type	Optical
Applications	It can be used for thermal scanners, precise contactless thermal measurement, thermal leaks in homes, industrial temperature control of moving parts, other types of heated object localization, human presence, and other similar applications
On-board modules	MLX90640, a 32x24 IR grid array sensor with EEPROM, from Melexis; PCA9306, a bi-directional I2C level translator, from Texas Instruments
Key Features	768 factory calibrated sensors, capable of contactless measuring of temperature up to 300° C, integrated 8Kbit of EEPROM for storing configuration and compensation parameters, programmable refresh rate up to 64Hz, and more
Interface	I2C
Input Voltage	3.3V or 5V
Compatibility	mikroBUS
Click board size	M (42.9 x 25.4 mm)

## Pinout diagram

---

This table shows how the pinout on **IR Grid 2 click** corresponds to the pinout on the mikroBUS™ socket (the latter shown in the two middle columns).

Notes	Pin					Pin	Notes
	NC	1	AN	PWM	16	NC	
	NC	2	RST	INT	15	NC	
	NC	3	CS	RX	14	NC	
	NC	4	SCK	TX	13	NC	
	NC	5	MISO	SCL	12	<b>SCL</b>	I2C Clock
	NC	6	MOSI	SDA	11	<b>SDA</b>	I2C Data
Power supply	<b>3.3V</b>	7	3.3V	5V	10	<b>5V</b>	Power Supply
Ground	<b>GND</b>	8	GND	GND	9	<b>GND</b>	Ground

## Onboard jumpers and settings

---

Label	Name	Default	Description
PWR	PWR	-	Power LED indicator
VCC SEL	VCC SEL	Left	Power supply voltage selection: left position 3.3V, right position 5V

# Software support

We provide a library for the IR Grid 2 click on our LibStock page, as well as a demo application (example), developed using MikroElektronika compilers. The demo can run on all the main MikroElektronika development boards.

## Library Description

The library contains all the necessary functions for successful work with IR Grid 2 click.

Key functions :

- `void irgrid2_init()` - Functions for initialization chip
- `void irgrid2_getPixelTemperature(float *Ta, float *pixelTemp)` - Functions for reads Ambient temperature and pixel temperature

## Example description

The application is composed of three sections :

- System Initialization - Initializes I2C module and USB UART for data logging
- Application Initialization - Initializes driver init and IR Grid 2 module
- Application Task - (code snippet) - Reads the temperature of all pixels and creates a pixel temperature matrix that logs on usbuart every 500ms
- note : The sensor needs about 4 minutes for calibration

```
void applicationTask()
{
    irgrid2_getPixelTemperature(&Ta,&pixelTemp[0]);

    mikrobus_logWrite("Ambient temperature: ",_LOG_TEXT);
    FloatToStr(Ta,demoText);
    mikrobus_logWrite(demoText,_LOG_LINE);
    mikrobus_logWrite(" ", _LOG_LINE);
    mikrobus_logWrite("--- Pixel temperature matrix 32x24 ---", _LOG_LINE);

    for ( cnt = 0 ; cnt < 768 ; cnt++)
    {
        FloatToStr(pixelTemp[cnt],demoText);
        demoText[ 5 ] = 0 ;
        mikrobus_logWrite(demoText, _LOG_TEXT);
        mikrobus_logWrite("|", _LOG_TEXT);
        Delay_1ms();
        if(((cnt % 32) == 0) && (cnt > 0))
        {
            mikrobus_logWrite(" ", _LOG_LINE);
        }
    }
    mikrobus_logWrite(" ", _LOG_LINE);
    Delay_ms( 500 );
}
```

The full application code, and ready to use projects can be found on our LibStock page.

Other mikroE Libraries used in the example:

- I2C

### **Additional notes and information**

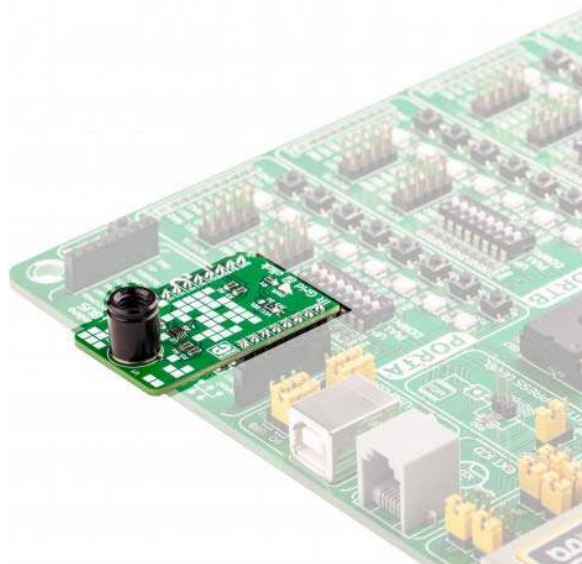
Depending on the development board you are using, you may need USB UART click, USB UART 2 click or RS232 click to connect to your PC, for development systems with no UART to USB interface available on the board. The terminal available in all MikroElektronika compilers, or any other terminal application of your choice, can be used to read the message.

## mikroSDK

---

This click board is supported with mikroSDK - MikroElektronika Software Development Kit. To ensure proper operation of mikroSDK compliant click board demo applications, mikroSDK should be downloaded from the LibStock and installed for the compiler you are using.

For more information about mikroSDK, visit the [official page](https://www.mikroe.com/mikroSDK).



<https://www.mikroe.com/ir-grid-2-click> 10-30-18