



TE Internal #: 1761008-3
 SFP, SFP+ & zSFP+, Cage Assembly, Data Rate (Max) 4 Gb/s,
 Internal/External EMI Springs, SFP, With Lightpipe, 1 x 4, Dual
 Square, Standard, Standard

[View on TE.com >](#)

Connectors > Pluggable IO Connectors & Cages > SFP, SFP+ & zSFP+



Pluggable I/O Product Type: **Cage Assembly**
 Data Rate (Max): **4 Gb/s**
 EMI Containment Feature Type: **Internal/External EMI Springs**
 Pluggable I/O Applications: **SFP**
 Lightpipe Options: **With Lightpipe**

Features

Product Type Features

Form Factor	SFP
Cage Type	Ganged
Pluggable I/O Product Type	Cage Assembly
Lightpipe Options	With Lightpipe
Connector System	Cable-to-Board
Sealable	No
Connector & Contact Terminates To	Printed Circuit Board

Configuration Features

Port Matrix Configuration	1 x 4
Lightpipe Configuration	Dual Square
Lightpipe Style	Standard
Lightpipe Profile	Standard
Number of Ports	4

Electrical Characteristics

--	--



Data Rate (Max)	4 Gb/s
-----------------	--------

Termination Features

Termination Method to Printed Circuit Board	Through Hole - Press-Fit
---	--------------------------

Mechanical Attachment

Connector Mounting Type	Board Mount
-------------------------	-------------

Usage Conditions

Operating Temperature Range	-55 – 85 °C[-67 – 185 °F]
-----------------------------	---------------------------

Operation/Application

Pluggable I/O Applications	SFP
----------------------------	-----

Circuit Application	Signal
---------------------	--------

Other

EMI Containment Feature Type	Internal/External EMI Springs
------------------------------	-------------------------------

Product Compliance

[For compliance documentation, visit the product page on TE.com>](#)

EU RoHS Directive 2011/65/EU	Compliant
------------------------------	-----------

EU ELV Directive 2000/53/EC	Compliant
-----------------------------	-----------

China RoHS 2 Directive MIIT Order No 32, 2016	No Restricted Materials Above Threshold
---	---

EU REACH Regulation (EC) No. 1907/2006	Current ECHA Candidate List: JUNE 2023 (235) Candidate List Declared Against: JUNE 2023 (235) Does not contain REACH SVHC
--	---

Halogen Content	Not Low Halogen - contains Br or Cl > 900 ppm.
-----------------	--

Solder Process Capability	Not applicable for solder process capability
---------------------------	--

Product Compliance Disclaimer

This information is provided based on reasonable inquiry of our suppliers and represents our current actual knowledge based on the information they provided. This information is subject to change. The part numbers that TE has identified as EU RoHS compliant have a maximum concentration of 0.1% by weight in homogenous materials for lead, hexavalent chromium, mercury, PBB, PBDE, DBP, BBP, DEHP, DIBP, and 0.01% for cadmium, or qualify for an exemption to these limits as defined in the Annexes of Directive 2011/65/EU (RoHS2). Finished electrical and electronic equipment products will be CE marked as required by Directive 2011/65/EU. Components may not be CE marked. Additionally, the part numbers that TE has identified as EU ELV compliant have a maximum concentration of 0.1% by weight in homogenous materials for lead, hexavalent chromium, and mercury, and 0.01% for cadmium, or qualify for an exemption to these limits as defined in the Annexes of Directive 2000/53/EC (ELV). Regarding the REACH Regulation, the information TE provides on SVHC in articles for this part number is based on the latest European Chemicals Agency (ECHA) 'Guidance on requirements for substances in articles' posted at this URL: <https://echa.europa.eu/guidance-documents/guidance-on-reach>

Compatible Parts



TE Part # 1367147-1
SFP COVER, UNPLATED

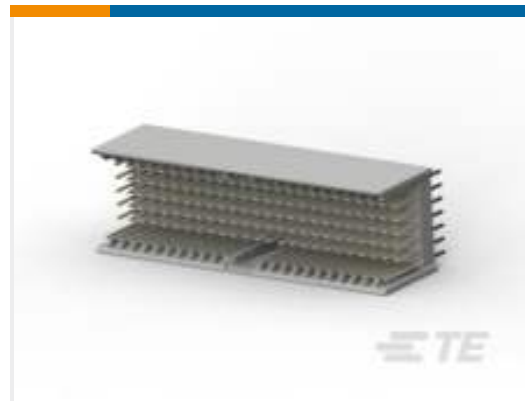


TE Part # 1367147-3
SFP COVER, UNPL, NO LOGO



TE Part # 1761394-1
DUST COVER, SFP, GANGED & STACKED

Customers Also Bought



TE Part #5646529-1
Z-PACK 2MM HM TYPE A/B 169P



TE Part #1734595-5
1.0 WTB SR VT HDR 5 POS



TE Part #2-1879073-7
THS10 47R 5%



TE Part #5212047-1
8 CIRC DIN RCPT GRND SHLD



TE Part #5-147278-4
05 MTE HDR SRRA SFMNT .100CL



TE Part #5-147324-3
04 MTE HDR SRRA SMT.100CL



TE Part #2110069-1
SFP+ 1x4 Cage Assembly, Light Pipes



TE Part #2379397-6
MCIO INTERGRATED CONN, V/T,8X, SMT TYPE



TE Part #1-1393577-9
FL 9SU 120+2

Documents

Product Drawings

[SFP 1X4 CAGE & LIGHT PIPE KIT](#)

English

CAD Files

[3D PDF](#)

[3D](#)



Customer View Model

[ENG_CVM_CVM_1761008-3_1.2d_dxf.zip](#)

English

Customer View Model

[ENG_CVM_CVM_1761008-3_1.3d_igs.zip](#)

English

Customer View Model

[ENG_CVM_CVM_1761008-3_1.3d_stp.zip](#)

English

By downloading the CAD file I accept and agree to the [Terms and Conditions](#) of use.

Product Specifications

[Application Specification](#)

English

Product Environmental Compliance

[MD_1761008-3_05222018844_dmtec](#)

English

[MD_1761008-3_05222018844_dmtec](#)

English