

Vector subrack packaging for 19" systems offers a versatile and comprehensive solution to your packaging needs. Based on DIN 41914, all parts conform to a system which allows your unique design to be constructed from a combination of standards. You may mix different module sizes and add accessories without the need for special designs. Subracks and accessories are available "off the shelf", affording you short lead times for on time completion of your project.

COMPLETE DIN SUBRACKS FULLY ASSEMBLED OR KITS

CCK Card Cage (subrack) frame only kit including sidewalls, front, rear and rear-center extrusions, all nut strips, backplane insulators and assembly instructions. CG1-series VectorPak™ card guides sold separately. Guide positions are variable at 1HP (0.200") horizontal increments.

CCA Card cage (subrack) frame only described above, but factory assembled.

CG1-series VectorPak™ card guides sold separately

DIN-Based Metric Subrack Ordering Information

CCK - 160

3U

Model Type

- CCK-** Card cage frame kit
- CCA-** Factory Assembled

Rack Height

- 3U = 5.25"H x 19.0"W
- 6U = 10.50"H x 19.0"W
- 9U = 15.75"H x 19.0"W

Card Depth

- 160 -160mm, 6.299"
- 220 -220mm, 8.66"
- 280- 280mm, 11.02"
- 340- 340mm, 13.39"
- 400- 400mm, 15.75"

Standard Card Heights

- 3U = 100mm (3.94")
- 6U = 233.35mm (9.187")
- 9U = 366.70mm (14.437")

NON EMC
Subracks



VectorPak™ Kit (CCK)



CCA160-6U shown with 1 pr. of CG1-160 card guides installed



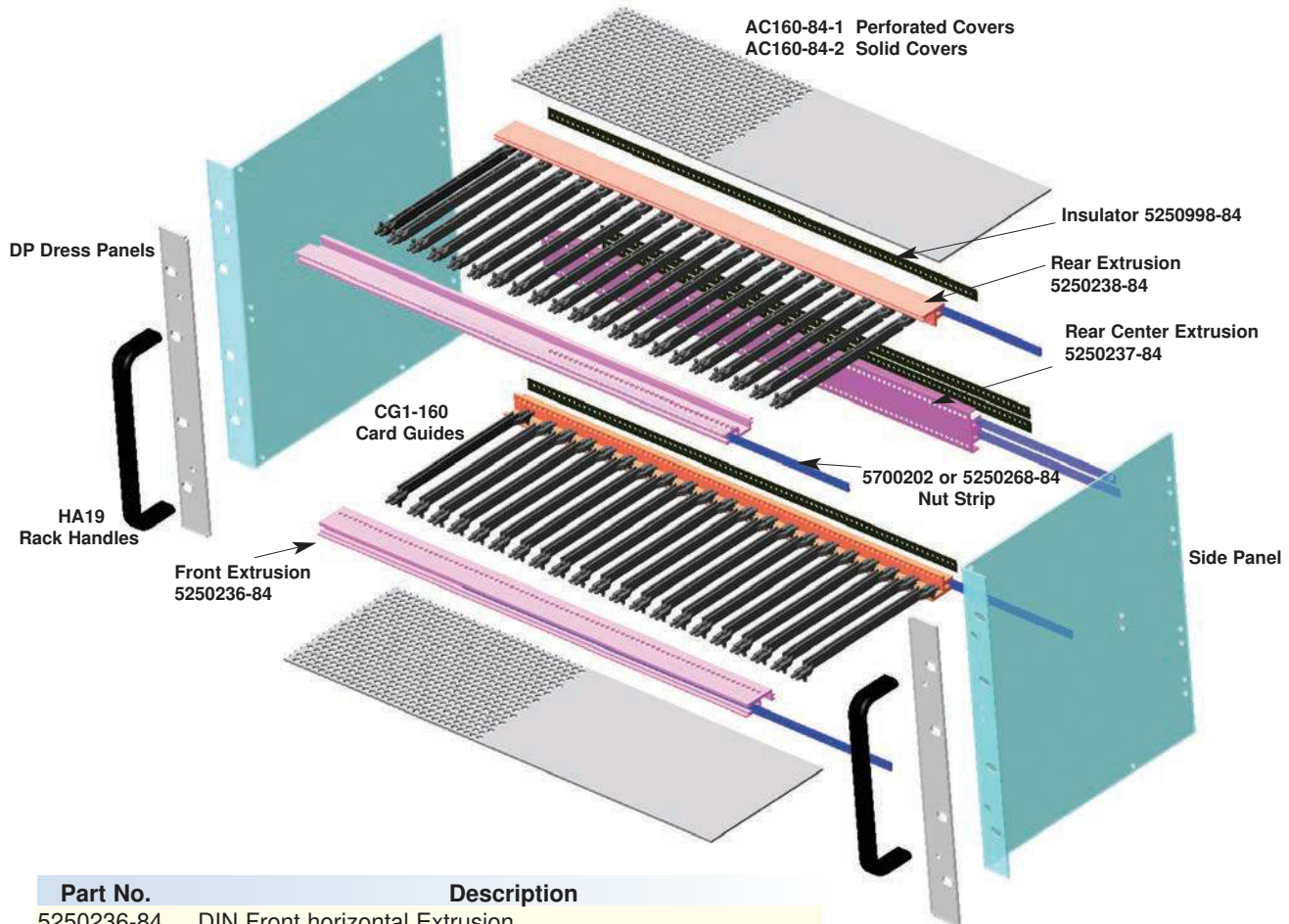
CCA160-3U shown with 1 pr. of CG1-160 card guides installed



Non EMC DIN-Based VectorPak™ Subracks



ALL VECTORPAK™ 19" DIN SUBRACK COMPONENTS AVAILABLE SEPARATELY



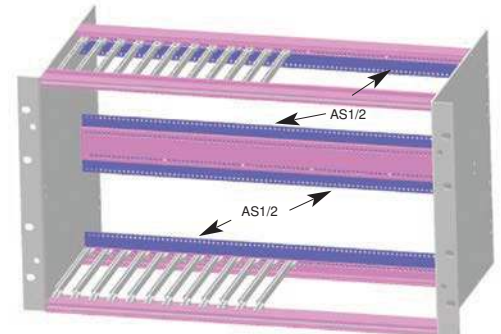
NON EMC Subracks

Part No.	Description
5250236-84	DIN Front horizontal Extrusion
5250238-84	DIN Rear horizontal Extrusion
5250237-84	DIN Center horizontal Extrusion
5250268-84 or 5700202	M2.5 Nut Strip, 17.0"
5250268-84	M2.5 Nut Strip, cut less than 17.0" in 0.20" increments 1HP)
5250998-84	Backplane Insulation Strip, 17.0"

The above items are available in 0.800" (4HP) to 17.0" (84HP) and attach to VectorPak™ sidewalls (Page 38) with 8-32 screws (HD94)

Attractive & Rugged Outer Enclosures

Available for 3U, 6U or custom subracks
Accepts up to 19" wide subracks with rackmount brackets.
Many choices of paint colors - Contact factory.



SE1588 with VectorPak™ CCA26 and CG3 card guides

www.vectorelect.com



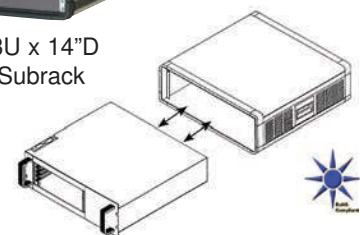
SE1588
4U for 8.4"W Subrack

SE1322
3U x 22"D for 19"W Subrack

Specification subject to change without notice



SE1422 3U x 14"D
for 19"W Subrack



800-423-5659



P/N CG1-160 and CG1-220 card guides are injection molded

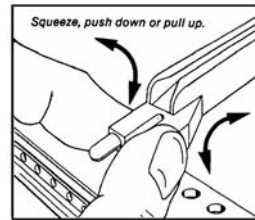


Polycarbonate end pieces with anodized aluminum "U" type

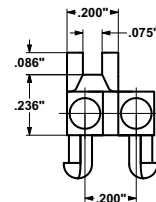
Card Guides

Specially designed card guides provide easy installation and repositioning, without special tools. Material is 5% glass-filled polycarbonate. Package contains 12 guides. Secure installation by spring loaded retainer ledge on front rail extrusion and vertical insertion into rear extrusion holes.

Part No.	Description	Card Thick	Description
CG1-160/12	160mm	.062"	Polycarbonate injection molded
CG1-220/12	220mm	.062"	Polycarbonate injection molded
CG1-280U/12	280mm	.062"	Polycarbonate/Black anodized aluminum
CG1-340U/12	340mm	.062"	Polycarbonate/Black anodized aluminum
CG1-400U/12	400mm	.062"	Polycarbonate/Black anodized aluminum



Installation/removal of guides from front strut



Handles

Black Anodized Aluminum handles for 3 and 6 sub racks. (Mounting hardware included).

Part No.	Pkg. Qty	Description
HA19-3U	2	Handle for 3U sub rack
HA19-6U	2	Handle for 6U sub rack
HA19-9U	2	Handle for 9U sub rack

Dress Panels

Dress panels provide an attractive, finished look for Vector Card Cages and are required when adding handles. Mounting hardware included. Brushed Aluminum with clear irridite finish.

Part No.	Pkg. Qty	Description
DP-3U	2	For 3U Sub rack, 5.25" high X 1.10" wide
DP-6U	2	For 6U Sub rack, 10.50" high X 1.10" wide
DP-9U	2	For 9U Sub rack, 15.75" high X 1.10" wide

Top/Bottom Covers

These aluminum panels provide maximum protection for cards and are available in perforated (AC160-84-1) or solid (AC160-84-2). Covers slide easily into DIN extrusion grooves and can be added or removed at any time, no hardware needed. Made of brushed aluminum with clear irridite finish.

Part No.	Pkg Qty	Width	Depth	For Card Size
*				
AC160-84-1, 2	2	16.98"	4.93"	160mm
AC220-84-1, 2	2	16.98"	7.29"	220mm
AC280-84-1, 2	2	16.98"	9.65"	280mm
AC340-84-1, 2	2	16.98"	12.01"	340mm
AC400-84-1, 2	2	16.98"	14.37"	400mm

*substitute -1 with -2 for solid covers



VectorPak™ powered sub rack with VME J1/J2 backplane and integrated fans

Non EMC Sub racks

